



CCWIS Feasibility Study Recommendation

Disclaimer: This document is a result of the DCFS CCWIS Feasibility Study, information contained within is subject to change. Recommendation is subject to agency review and appropriation.

Project Key Accomplishments



1

Phase 1

Initiation Deliverables approved.

2

Phase 2

Planning Deliverables approved.

3

Phase 3

Business Requirements Document (BRD) approved.

4

Phase 4

Alternatives Analysis and Cost Benefit Analysis seeking approval.

5

Phase 5

Gap Analysis document approved.
Recommendation & Roadmap and Technical and Architectural Documents Review period 6/11-6/19.

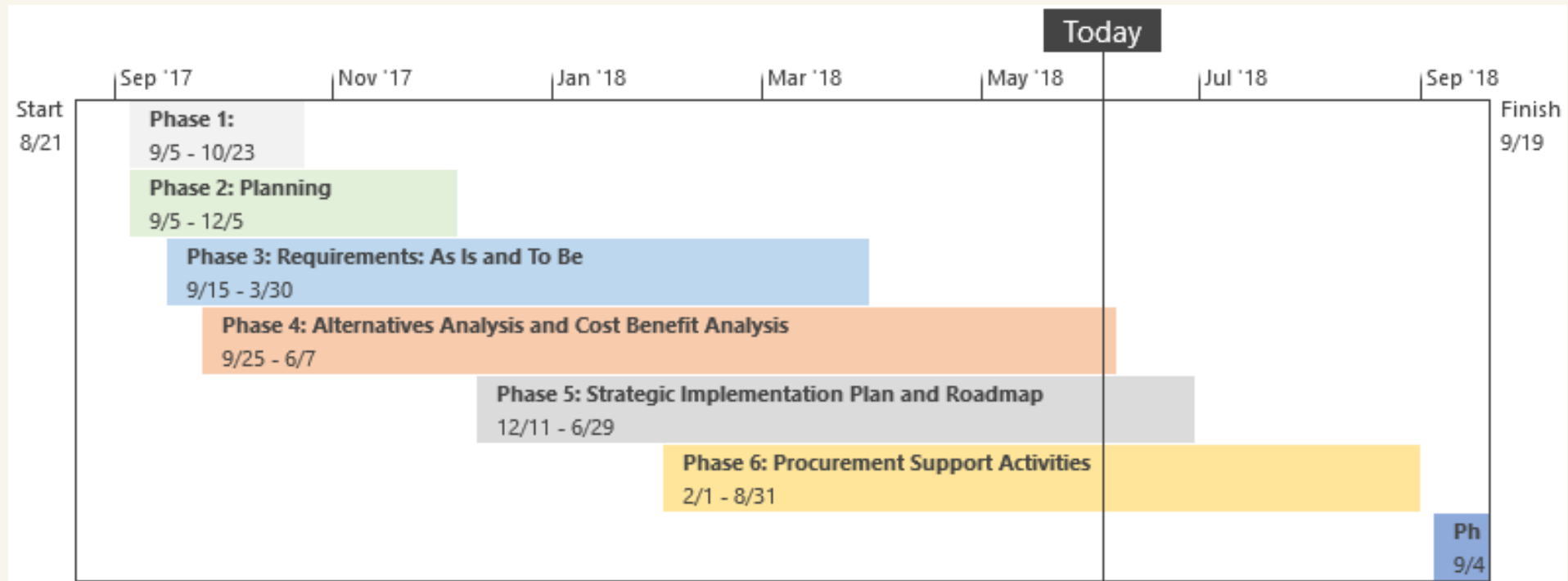
6

Phase 6

Implementation Advanced Planning Document (IAPD) started .

Note: Phase 7 (Closing) activities have not yet started.

Phase Timeline



CCWIS Replacement | Recommendation

RECOMMENDATION: Utilize COTS Platform

Replacement of Status Quo systems with a Commercial Off-The-Shelf (COTS) Platform-based solution

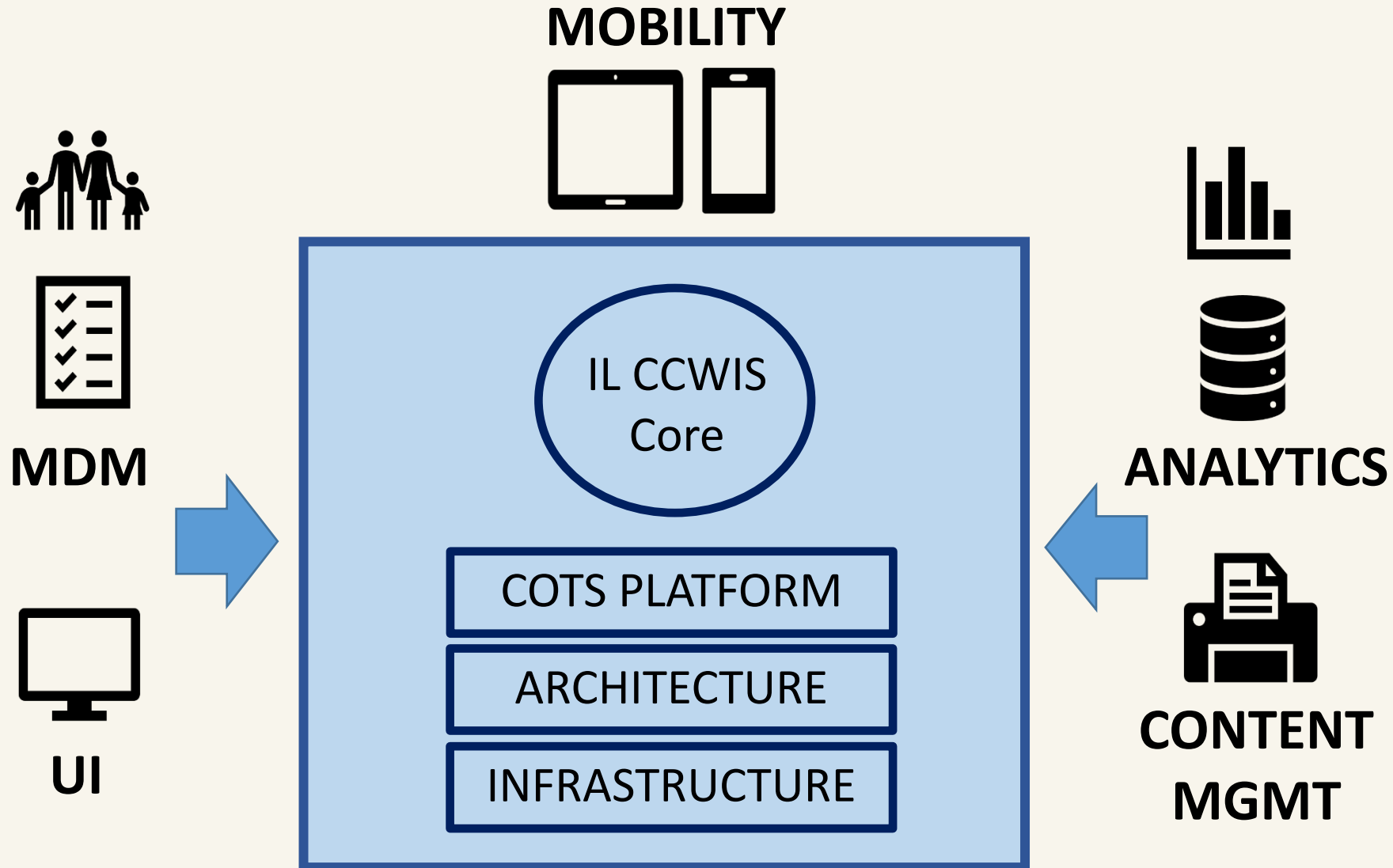
Benefits:

- Ability to be configured and tailored to fit the business process of DCFS
- Allows for best-of-breed selections for COTS products
- Provides built in infrastructure
- Contains workflow and configuration engines in addition to customization of code
- Incremental (Phased) Development
- Modern design and architecture
- Competitive marketplace for solutions offering a large number of available options and competitive pricing

Risks:

- Although level of fit can be estimated, it will be unknown what the level of fit until DDI
- More customization means increased DDI timelines
- “Big Bang” Implementation would be required due to the complexity of decommissioning the Status Quo Systems

CCWIS COTS Platform | Solution Overview



CCWIS Strategy

1. Replace SACWIS Core with COTS Platform
2. Implement CCWIS Functions Using COTS Products
3. Modernize CCWIS Architecture and Infrastructure

CCWIS COTS Platform | Guiding Principles

Implementation Considerations:

- Select Platform-Based Case Management System(s)
- Select COTS Products to Implement Desired CCWIS Functions (Provider Management, Analytics, Automated Eligibility)

Perform Low-Risk CCWIS Implementation Approach:

- Incremental (Phased) Development
- Utilize COTS Product(s) / Solution(s) Where Possible
- Develop Realistic CCWIS Implementation Roadmap
- Utilize Best Practices (Child Welfare, Industry)
- Utilize “Lessons Learned” (SACWIS & CCWIS Projects from other States)

Reuse Existing SACWIS / Enterprise Assets Where Possible:

- Document Management, ERP, Mobility, Security Model, E-signatures, Master Data Management, Power BI

Perform Formal Implementation Preparation:

- Business Process Reengineering (BPR)
- Organizational Change Management (OCM)
- Data Quality Management (DQM)
- Project Management Office (PMO)

Maximize Federal Funding Participation (FFP):

- 50% Match for CCWIS

CCWIS COTS Platform | Implementation Options

Option	Description
COTS*	Replacement of the Department’s current systems with a Commercial Off-The-Shelf (COTS) product(s): <ul style="list-style-type: none"> • COTS product(s) that include the functions required to support child welfare operations • COTS components that provide specific core child welfare functionality (e.g. financial, case management, etc.) • Platforms and development frameworks which can be utilized to build / configure a new child welfare solution
Modernization*	Redesign and/or enhancement of the Department’s current Illinois Child Welfare Information System (ICWIS), also known as “SACWIS”, and integration and/or retirement of other legacy systems: <ul style="list-style-type: none"> • Functional enhancements • Architecture enhancements • Extensibility of data exchanges • Interoperability with other systems
Transfer*	Replacement of the Department’s current systems with a CCWIS-compliant or Statewide Automated Child Welfare Information System (SACWIS)-certified transfer system that meets the majority of DFCS’ business needs: <ul style="list-style-type: none"> • A complete transfer of a CCWIS-compliant or SACWIS-certified product from another state or locality • Transfer of CCWIS-compliant or SACWIS-certified components from the CCWIS library or other state/locality assets
Custom	Replacement and/or enhancement of DCFS’ current systems with a custom-built product: <ul style="list-style-type: none"> • Fully-developed custom solutions, tailored specifically to the needs of Illinois
Status Quo	No changes are made to the current DCFS environment and the systems remain “as-is”. Note that this option would still require some future modification to account for changing state and federal regulations.

*** = Highlighted Options Were Considered As Viable CCWIS Replacement Alternatives**

CCWIS COTS Platform | Why Not SACWIS Modernization?

- Current system has poor data quality (ex: duplicate clients); results in unreliable data management and reporting
- Current system needs functional upgrades, such as Mobility, Analytics, Master Data Management, User Interface
- Current system has outdated User interface which does not utilize modern principles such as RWD (Responsive Web Design)
- Current system has limited interoperability (minimal use of APIs); limited ability to interact with courts, education, and medical services
- Current system has legacy Cobol/IMS/DB2 applications which are not extensible or scalable and are expensive to maintain
- Current system has outdated architecture and infrastructure; for example, workflow engine, business rules engine, and security

CCWIS COTS Platform | Why Not State Transfer?

- Transfer systems are designed to implement child welfare processes and workflow from another State – they are not IL-specific.
- Transfer systems involve implementing three (3) areas that are difficult to transfer from State to State – business processes, workflow, and system architecture.
- Transfer systems (SACWIS and CCWIS) are not always implemented on a modern, industry-standard platform and architecture.
- Transfer systems will only allow IL to achieve a high degree of “fit” if the State is willing to accept the built-in processes and workflow provided in the transfer solution.
- Transfer system implementations have traditionally experienced cost and schedule overruns due to inaccurate estimates of “fit”.
- There are no CCWIS-certified transfer systems available yet – using a non-certified CCWIS solution means that IL is also transferring (taking on) the risk of achieving certification.

Questions and Answers

General Discussion

If anyone (DCFS, POS or Contractor) is to receive questions from outside stakeholders/vendors, please direct interested parties to the recommendation posted on our website or the dcfs.bidbuy@illinois.gov email account.

DCFS Contacts



McKenzie Smith
DCFS CCWIS Project Manager

T: (217) 299-0868
E: McKenzie.Smith@illinois.gov



Rachael Kerrick-Brucker
SACWIS Product Owner

T: (217) 828-0022
E: Rachael.Kerrick-Brucker @illinois.gov

PCG Contacts



Carole Hussey
PCG Engagement Manager

T: (617) 717-1296
E: chussey@pcgus.com



Sterling McCullough
PCG Project Manager

T: (410) 698-3929
E: smcclough@pcgus.com



Michelle Fox
PCG Deputy Project Manager

T: (717) 884-7758
E: mfox@pcgus.com