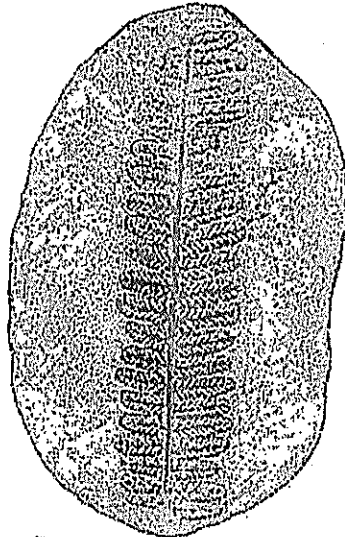
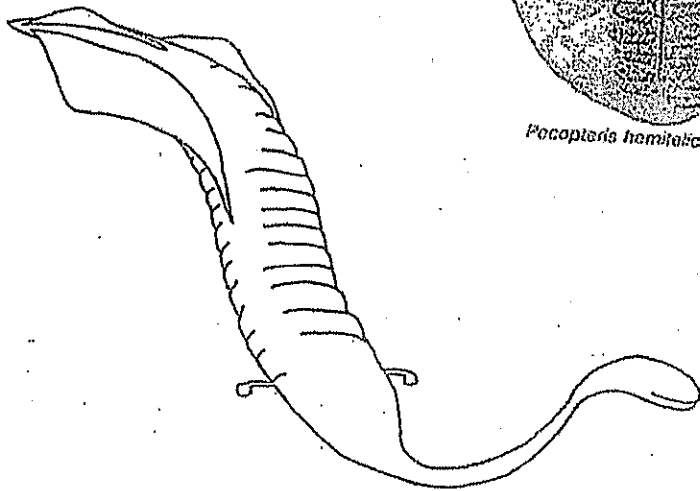
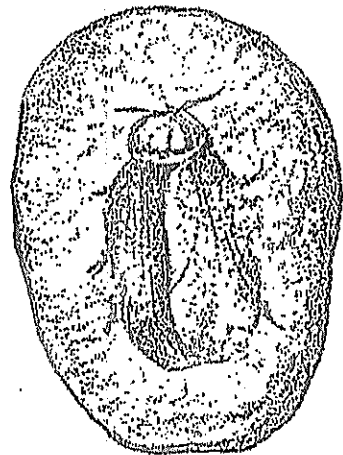


# FOSSIL PERMIT

Tully Monster  
Illinois' State Fossil

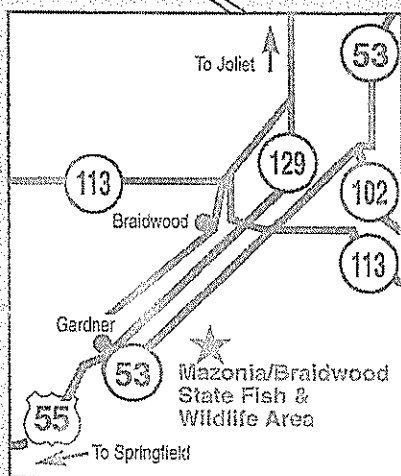
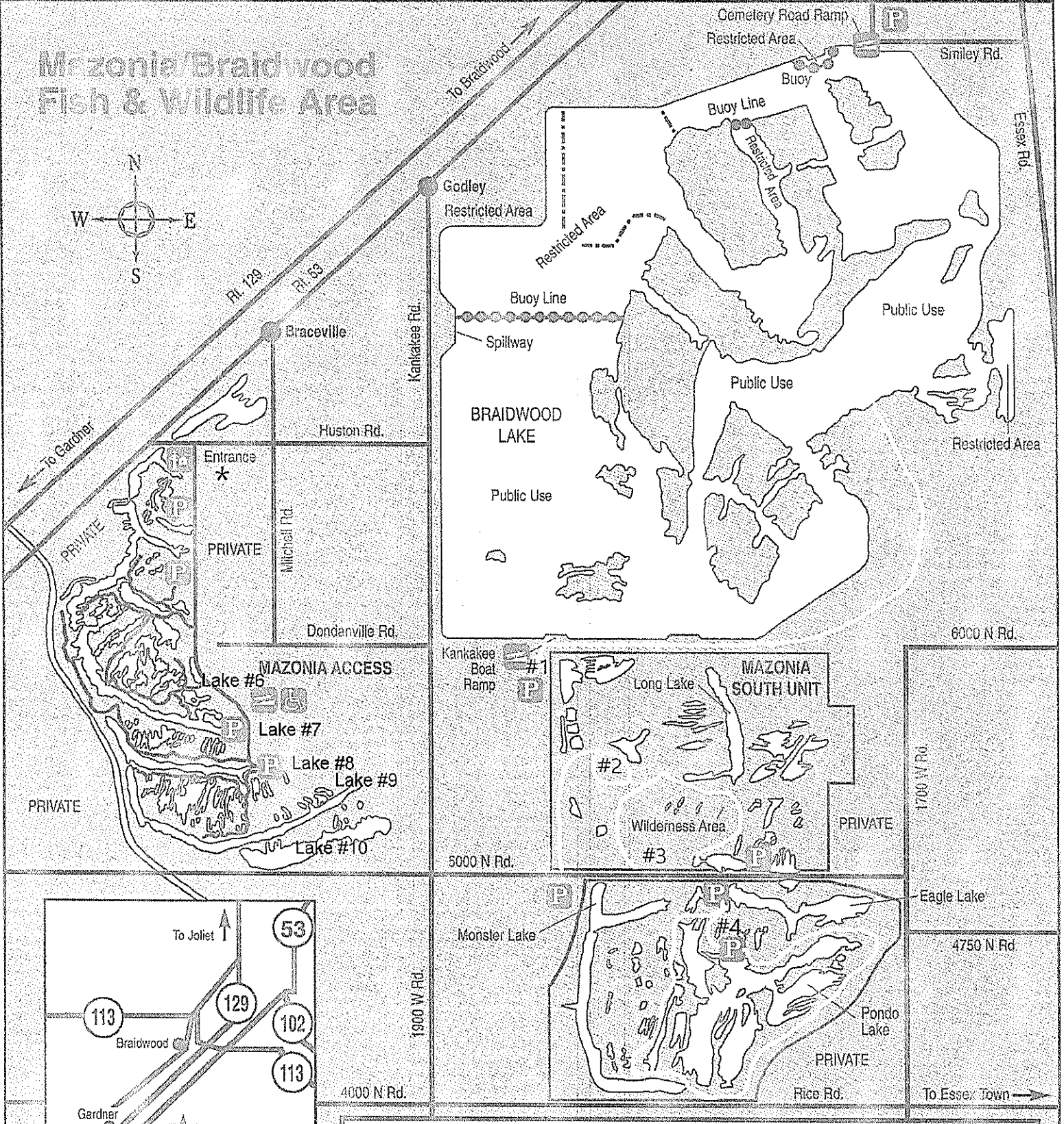
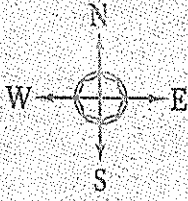


*Pocoptera hominivictor* X1.0



*Abthoroblattina* 2/3x

# Mazonia/Braidwood Fish & Wildlife Area



Legend	
	Boat Launch
	Check Station
	Handicap
	Parking
* You Are Here	

#1 2.5 mile walk.

#2 Look for hill with erosions.

#3 Pull off 5000 N. Road. Rough terrain.

#4 Walk around lake to search for erosions.

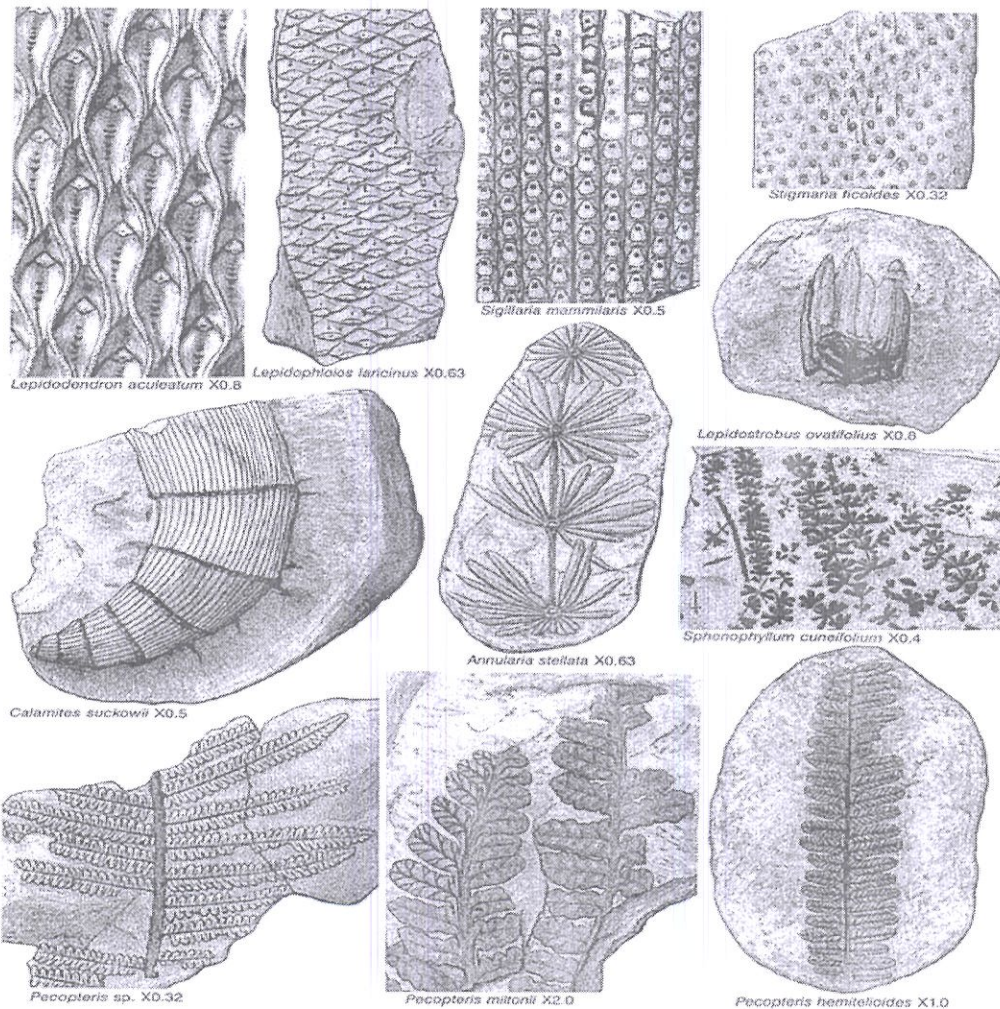
## Fossil Hunting

Go to Mazonia South Unit, East on 5000 North Road. Park at Eagle Lake Parking Lot and walk the gravel road going toward the Ponderosa Lake. On the right-hand side of the road, you will see a cable with a sign on it "Authorized Vehicle Only", walk around sign and go in about a quarter of a mile. You will find Jellyfish and Shrimp fossils. Also, along 5000 North Road to the east, you will find fossils laying in the ditches. Fern fossils can be found under tall evergreen trees.

To find out whether you have specimens in the concretions that you have collected, you will need to open them. Wear safety glasses or goggles when working on the specimens. Place the concretion on a solid base, such as a large rock, and orient it so that you hold the short axis between your thumb and forefinger. Then, gently tap it around its entire circumference as you slowly rotate it about its short axis. Watch your fingers as you tap the specimen. You will not always get a clean break that will expose the whole specimen, especially if you strike it too hard and do not rotate it enough. Several rotations with light tapping are better than sharp blows with only one or two rotations.

The best method for splitting the concretions is to subject them to a series of freeze-thaw cycles. The best results are obtained by soaking the concretions in a plastic pail, filled with water, for two days. Then place them in a freezer for two days. Let the concretions thaw, and lightly tap them just as described. If they don't open, then continue to subject the concretions to a repeated series of freeze-thaw cycles until they break open either of their own accord or with very gentle taps. The number of freeze-thaw cycles range from a few times to as many as 20 or more. If they don't open after a number of freeze-thaw cycles and your patience has reached its limit, go ahead and give the concretion a good hard blow with a hammer (remember to wear safety glasses). Not all concretions contain specimens! If you don't have a large freezer at home to perform these cycles, you'll have to wait until winter for nature's help.

Common Pennsylvanian plants: lycopods, sphenophytes, and ferns





**Fossil Collecting Day Use Permit**  
**Mazonia-Braidwood State Fish and Wildfire Area**

Name (Individual or Group): \_\_\_\_\_ Date \_\_\_\_\_

Address: \_\_\_\_\_

City: \_\_\_\_\_ State: \_\_\_\_\_ Zip Code: \_\_\_\_\_

Phone: \_\_\_\_\_

If a group, # of individuals \_\_\_\_\_

Is fossil collecting the primary reason for your visit to the site today?    Y    N

The Mazonia/Braidwood SFWA is a multipurpose public facility for recreational activities including hunting, fishing, boating and other activities. In addition, this site contains rich Pennsylvanian age fossil deposits known throughout the world as the Mazon Creek concretions (nodules). The IDNR websites at, <http://museum.state.il.us> and <http://www.isgs.uiuc.edu>, have a wealth of information on these fossils.

Amateur and scientific research collecting will be allowed subject to the issuance and terms of this permit. **Collection for commercial purposes is prohibited at this site.**

In order to make sure that information on fossil bearing nodules is not lost and to comply with relevant laws, the Department requires that a report be filed for nodules that are removed from this site. Reports may be returned to the park office or mailed in. The information on this form is very important to increase scientific understanding of this unique site. **Therefore, your assistance in this scientific endeavor by filing this report is greatly appreciated.**

Persons wishing to donate opened or unopened concretions may leave them at the park office.

**Rules for collecting at this site:**

1. Collecting is allowed in areas where the surface is exposed from erosion. **Excavation is prohibited in any areas.**
2. The daily limit of fossil concretions which can be removed from the site is one (1) five-gallon container per person. This limit will allow many people to enjoy this activity.
3. Fossils collected will not be commercially sold.
4. A signed copy of this permit must be available for inspection by park personnel for the day of your visit.

I agree to the terms and rules stated above.

\_\_\_\_\_  
Individual or Group Leader

\_\_\_\_\_  
Date

**Fossil Collection Report from the Mazonia-Braidwood State Fish and Wildlife Area**

This report must be returned to the site office by drop off or mail.

Mail to: Mazonia-Braidwood SFWA, 7705 E. Huston Road, PO Box 126, Braceville, IL 60407

Name: \_\_\_\_\_

Address: \_\_\_\_\_

City, State and Zip Code: \_\_\_\_\_

Phone (Optional): \_\_\_\_\_

Email (Optional): \_\_\_\_\_

Date Nodules Collected: \_\_\_\_\_

Number of Nodules Collected and Removed from the Site \_\_\_\_\_

Unopened \_\_\_\_\_ Opened (2 halves) \_\_\_\_\_ One half \_\_\_\_\_

Fossils Recovered and Number (identify to the best of your ability):

.....  
.....  
.....  
.....  
.....  
.....  
.....  
.....  
.....  
.....