

# green treefrog

*Hyla cinerea*

Kingdom: Animalia  
Phylum: Chordata  
Class: Amphibia  
Order: Anura  
Family: Hylidae

## ILLINOIS STATUS

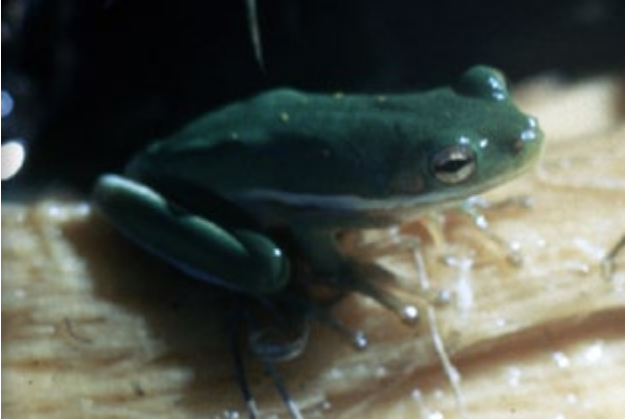
common, native

## FEATURES

The green treefrog averages one and one-fourth to two and one-fourth inches in length. Its body color is usually bright green. A white or yellow stripe is present along each side. It may have tiny, gold flecks on the back. The skin is smooth. An adhesive pad is present at the tip of each toe.

## BEHAVIORS

The green treefrog may be found in extreme southern Illinois. It lives in cypress swamps, sloughs and marshes. This species may be found on vegetation, like cattails. It breeds from mid-May through August. The male's call is "quonk, quonk, quonk" which has been compared to a cowbell. Eggs are laid in small packets or films in floating vegetation. Each female may deposit from 500 to 1,000 eggs. Hatching occurs in a few days. Transformation to the land-based form is completed about two months after hatching. The green treefrog eats arthropods (spiders, insects, mites and others).



adult

## ILLINOIS RANGE



© Illinois Department of Natural Resources. 2020. *Biodiversity of Illinois*.

Unless otherwise noted, photos and images © Illinois Department of Natural Resources.



adults

© EIU Zoology Department Wildlife Preservation Fund Grant

Photo by MDC Staff, courtesy Missouri Department of Conservation



© Illinois Department of Natural Resources. 2020. *Biodiversity of Illinois*.  
Unless otherwise noted, photos and images © Illinois Department of Natural Resources.



### **Aquatic Habitats**

bottomland forests; lakes, ponds and reservoirs

### **Woodland Habitats**

bottomland forests; southern Illinois lowlands

### **Prairie and Edge Habitats**

none