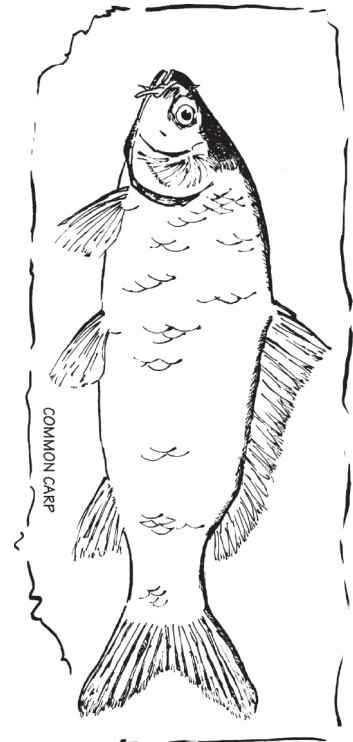


# Aquatic Exotic Species Fact Cards



The *Aquatic Exotic Species Fact Cards* can be used to support the lessons in Units 1, 2 and 3. They can also be used independently for students to learn more about these species and to encourage further research.

## STUDENT ACTIVITY | Aquatic Exotic Species Fact Cards



### **common carp**

#### *Cyprinus carpio*

Kingdom Animalia

Phylum Chordata

Superclass Osteichthyes

Class Actinopterygii

**LOCATION** – statewide - exotic

**FEATURES** – two barbels on each side of lower jaw; introduced in the late 1800s; native to Asia

**HABITAT** – lakes, ponds, rivers

**HABITS** – bottom forager; feeds in late evening and early morning





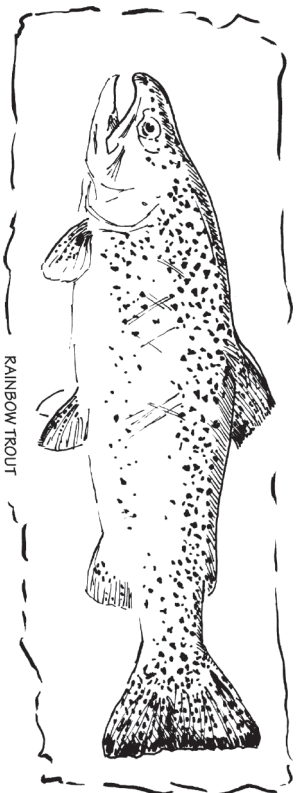
**purple loosestrife**  
*Lythrum salicaria*  
Kingdom Plantae  
Division Tracheophyta

**LOCATION** – mainly northern and northeastern Illinois - exotic

**FEATURES** – can distribute two million seeds per year; no native predators; native to Europe and Asia; in Illinois since about 1940

**HABITAT** – disturbed, moist soils; marshes; lake shores

**HABITS** – forms dense stands; animals will not eat it; crowds out native species



**rainbow trout**  
*Salmo gairdneri*

Kingdom Animalia  
Phylum Chordata  
Superclass Osteichthyes  
Class Actinopterygii

**LOCATION** – Lake Michigan and inland lakes where stocking occurs - exotic

**FEATURES** – native to the Pacific coast of North America; pink stripe on side; adipose fin; introduced in the 1920s

**HABITAT** – water bodies with cool temperatures

**HABITS** – eats insects, snails and small fishes





## zebra mussel

*Dreissena polymorpha*

Kingdom Animalia

Phylum Mollusca

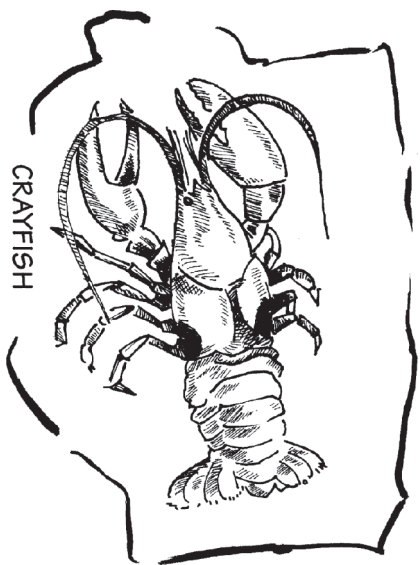
Class Bivalvia

**LOCATION** – Lake Michigan and large rivers - exotic

**FEATURES** – found in Illinois waters in 1990; may produce up to one million eggs at once; native to Caspian Sea region of Asia

**HABITAT** – lakes, rivers

**HABITS** – filter feeder; will attach to nearly anything in water



## rusty crayfish

*Orconectes rusticus*

Kingdom Animalia

Phylum Arthropoda

Class Malacostraca

**LOCATION** – Lake Michigan; Fox, Illinois and Rock river systems - exotic

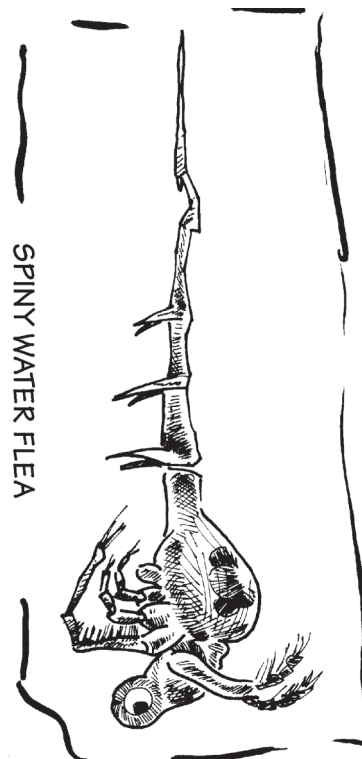
**FEATURES** – native to Ohio, Kentucky and Tennessee; large red spot on each side of carapace; believed to have been introduced in the 1970s

**HABITAT** – streams and lakes

**HABITS** – aggressive; reduces aquatic vegetation







SPINY WATER FLEA

## **spiny water flea**

*Bythotrephes cederstroemi*

Kingdom Animalia

Phylum Arthropoda

Class Branchiopoda

**LOCATION** – Lake Michigan, possibly some inland lakes - exotic

**FEATURES** – native of Europe; present in Illinois by 1987; reproduces rapidly; long, barbed tail spine

**HABITAT** – cool, deep lakes

**HABITS** – eats plankton



Equal opportunity to participate in programs of the Illinois Department of Natural Resources (IDNR) and those funded by the U.S. Fish and Wildlife Service and other agencies is available to all individuals regardless of race, sex, national origin, disability, age, religion or other non-merit factors. If you believe you have been discriminated against, contact the funding source's civil rights office and/or the Equal Employment Opportunity Officer, IDNR, One Natural Resources Way, Springfield, IL 62702-1271; 217/785-0067; TTY 217/782-9175. This information may be provided in an alternative format if required. Contact the DNR Clearinghouse at 217/782-7498 for assistance.

Aquatic Illinois © 2011, Illinois Department of Natural Resources  
DNR 156 – 6/12 • IOCI 12-0831