

**Installation of boot brush stations at priority trailheads in southern Illinois to
prevent invasive plant spread**

Project Final Report (#10-L12W)

Submitted to IDNR by Christopher Evans, River to River CWMA Coordinator

September 7, 2010

Illinois Department of Natural Resources Wildlife Preservation Fund –Project Report

Project Title

Installation of boot brush stations at priority trailheads in southern Illinois to prevent invasive plant spread

Project Summary

The project purchased and installed 14 boot brush stations in Southern Illinois and is currently loaning the 15th station to the Illinois Natural History Survey for use in their Mobile Learning Center on invasive species. These stations were placed on Illinois DNR, Green Earth Inc., and Crab Orchard NWR lands. The boot brush stations will aid in removing seeds from hikers before entering these public use areas as well as help educate users to the threat of invasive species and their spread potential.

Reimbursement Requested: \$9,370.00

Project Objectives Met

The objectives of this project were to 1. Prevent new introductions of invasive species by encouraging hikers and other trail users to clean the shoes/boots before and after hiking to remove any seeds trapped on the shoe; 2. Slow the spread and negative impacts of invasive species through this reduction of new introductions; and 3. Enhance public awareness of invasive species by educating the trail users about the threat of invasive species and what they can do to help prevent further spread. All three of these objectives are being met through the installation of boot brush stations at priority locations.

These boot brush stations include a sign that asks readers to clean their feet to remove invasive plant seeds, give examples of invasive plants that can be spread on boots, and gives information as to why invasive plants are a threat. Below the sign, a boot brush is mounted above a gravel trap (see pictures).

A contractor was utilized to install the stations and the hardware necessary (4"x4" posts, weed mat, gravel, and treated boards) were included in his price. In addition to installing the new boot brush stations, all 26 existing stations were visited, cleaned and the brushes were replaced if needed.

Boot brush stations were designed, purchased, and installed on priority locations across Southern Illinois. These new boot brushes complement the 26 stations that are already in place in Southern Illinois. Below is a list of the boot brush locations (with an * used to denote locations installed as part of this grant):

Berryville Glade Nature Preserve – access trail	Heron Pond – Heron Pond/Little Black Slough Trail
Cache River SNA – Marshall Ridge Trail	Horseshoe Lake – Island Trail access 1
Cache River SNA – Wetland Center Trail access*	Horseshoe Lake – Island Trail access 2
Cedar Bluff WMA – Bork’s Waterfall Trail	Lusk Creek Nature Preserve – access trail
Cedar Bluff WMA – Cedar Bluff Trail	Lusk Creek Nature Preserve – Indian Kitchen Trail
Cedar Bluff WMA – Climber’s Access Trail	Shawnee NF, Bell Smith Springs – Natural Bridge Trail
Crab Orchard NWR – Harmony Trail*	Shawnee NF, LaRue Pine Hills – Clear Springs Trail
Crab Orchard NWR – Rocky Bluff Trail*	Shawnee NF, LaRue Pine Hills – Inspiration Point
Cretacious Hills – access trail	Shawnee NF, LaRue Pine Hills – Snake Road
Dixon Springs State Park – Ghost Ridge Canyon Trail	Shawnee NF, Rim Rock – access trail
Ferne Clyffe State Park – Big Rocky Hollow Trail	Trail of Tears State Forest – White Pine Trail
Ferne Clyffe State Park – Round Bluff Trail	Tunnel Hill Trail State Park – Belknap Access*
Giant City State Park – Giant City Nature Trail	Tunnel Hill Trail State Park – Carrier Mills Access*
Giant City State Park – Indian Creek Nature Trail	Tunnel Hill Trail State Park – Feasel Street access*
Giant City State Park – Stonefort Trail	Tunnel Hill Trail State Park – Karnak Access*
Giant City State Park – Trillium Trail	Tunnel Hill Trail State Park – New Burnside Access*
Gibbons Creek Barrens – access trail	Tunnel Hill Trail State Park – Stonefort Access*
Green Earth, Inc. , Chautauqua Bottoms – David Kenny Trail access 1*	Tunnel Hill Trail State Park – Tunnel Hill Access*
Green Earth, Inc. , Chautauqua Bottoms – David Kenny Trail access 2*	Tunnel Hill Trail State Park – Vienna Access*
Green Earth, Inc., Brush Hill – access trail*	Wildcat Bluff – Wildcat Bluff Trail

Detailed Budget

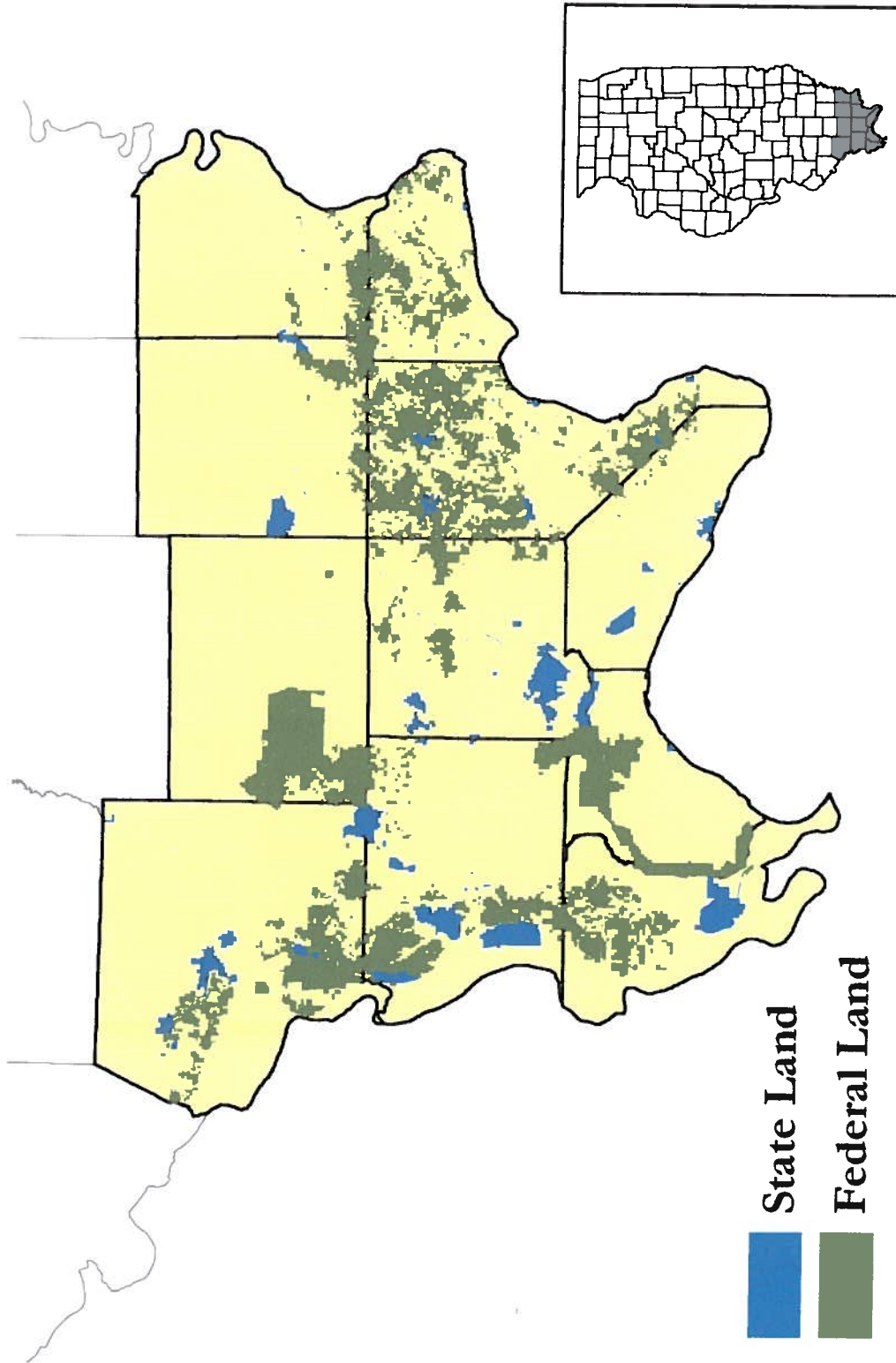
		WPF Funds	Cost Share Funds	Detail Total
PERSONNEL				
TRAVEL				
EQUIPMENT				
MATERIALS/SUPPLIES				
Boot brush station packets – 15	\$400/packet	\$6000		\$6000
Treated 4x4 lumber - 30	\$10/per	\$300		\$300
CONTRACTUAL SERVICES				
Installation of stations	\$200/station	\$3000		\$3000
OTHER				
Shipping for brush station packets		\$500		\$500
		\$9,800		
TOTAL COST OF PROJECT				\$9,800

Actual Expenses

		WPF Funds	Cost Share Funds	Detail Total
PERSONNEL				
TRAVEL				
EQUIPMENT				
MATERIALS/SUPPLIES				
Boot brush station packets – 15	\$400/packet	\$6000		\$6000
CONTRACTUAL SERVICES				
Installation of stations (including hardware purchases)	\$212/station	\$3180		\$3180
OTHER				
Shipping for brush station packets		\$190		\$190
		\$9,370		
TOTAL COST OF PROJECT				\$9,370

Final Project Expenses and Reimbursement Needed: \$9,370.00

Appendix A: Project Location Map



Boot Brush Station Example



Actual Graphic used on Boot Brush Station



ALERT

Clean Your Footwear Before Entering and Leaving This Area



ALERT

Help Reduce the Spread of Exotic Invasive Species

Exotic invasive plants are highly aggressive species which are not native to Illinois. These plants spread rapidly, can form dense colonies, and are wiping out native wildflowers, destroying wildlife habitat, and altering natural soil conditions.

Seeds from invasive species like these pictured below are spread on footwear, ATVs, and other offroad vehicles and equipment. Thank you for helping us to stop the spread of seeds by using this boot brush.

If you discover these or any invasive species on other lands, try to inform the landowner so control measures can be considered before it's too late. Visit RTRCWMA.org to learn more about invasive species.



Examples of Invasive Plants Spread by Footwear



Japanese stiltgrass
Threat: All habitats



Garlic mustard
Threat: Woodlands & Forests



Sweet Clover
Threat: Glades & Prairies



Sericea lespedeza
Threat: Glades, Prairies & Woodlands



CRYSTAL GRAPHICS Inc.

4225 Drane Field Road
Lakeland, FL. 33811

Invoice

Date	Invoice #
6/28/2010	102928

Phone # 863-577-2000
Fax # 863-644-1534

Bill To
River to River Cooperative Christopher Evans 8588 Route 148 Marion, IL 62959

Ship To
River to River Cooperative Christopher Evans 8588 Route 148 Marion, IL 62959

P.O. Number	Terms	Rep	Ship	Via	F.O.B.	Project
V - Chris	Net 15		6/28/2010	R & L Carriers	Lakeland	
Quantity	Item Code	Description			Price Each	Amount
15	Frame	All Aluminum Boot Brush Frames built to NPS Standards, black, to mount on 4x4 posts(not included). Graphic to be 18" H x 24" wide to fit frame provided.			400.00	6,000.00
1	Freight	Freight and crate charge			190.00	190.00

SHAWNEE RESOURCE AND CONSERVATION AREA
502 COMFORT DR. STE. E
MARION, IL 62959-4968

1865

7/22/2010
Date

70-320/812

Pay to the order of Crystal Graphics, Inc \$ 6,190.00
six thousand one hundred ninety + 00/100 Dollars



2 SIGNATURES REQUIRED

or Bootbrush frames Chuck McDiack Melissa Wilson MP

⑆08⑆20⑆208⑆ ⑆802 118 2⑆1865

					Total	\$6,190.00
--	--	--	--	--	--------------	------------



Invoice

Date	Invoice #
6/28/2010	102928

Phone # 863-577-2000
 Fax # 863-644-1534

Bill To
River to River Cooperative Christopher Evans 8588 Route 148 Marion, IL 62959

Ship To
River to River Cooperative Christopher Evans 8588 Route 148 Marion, IL 62959

P.O. Number	Terms	Rep	Ship	Via	F.O.B.	Project
V - Chris	Net 15		6/28/2010	R & L Carriers	Lakeland	
Quantity	Item Code	Description			Price Each	Amount
15	Frame	All Aluminum Boot Brush Frames built to NPS Standards, black, to mount on 4x4 posts(not included). Graphic to be 18" H x 24" wide to fit frame provided. Freight and crate charge			400.00	6,000.00
1	Freight				190.00	190.00
					Total	\$6,190.00

Bid / Estimate

HUGGINS CONTRACTING
David E. Huggins, Owner
2764 Coyote Lane
Belknap, IL 62908
(618) 638-3553

DATE
6/29/2010

Bid/ESTIMATE #
102

BILL TO
Illinois Department of Natural Resources 8588 Route 148 Marion, Illinois 62959 Att: Christopher Evans

CONTRACT INFO
Christopher Evans, Coordinator River to River Cooperative Weed Mgmt. Area (618) 998-5920

DATE	DESCRIPTION	QTY	RATE	AMOUNT
06/29/10	Assembly and installation of combination boot brush information signs at various locations across Southern Illinois. We will assemble signs with 4"x4" treated posts. Install sign posts with rebar and a 60 lb bag of Quickcrete at the base of the sign. Construct a 2"x4" treated frame, lay weed block mat and fill base with clean native gravel.	15	212.00	3,180.00
				0.00

SHAWNEE RESOURCE AND CONSERVATION AREA
 502 COMFORT DR. STE. E
 MARION, IL 62959-4968

1867

7/22/2010
 Date

70-320/812

Pay to the Order of Huggins Contracting \$ 3,180.00
Three thousand one hundred eighty + 00/100 - Dollars



2 SIGNATURES REQUIRED

For Installation of bootbrush signs Chris Madala Melissa Wilson

⑆08⑆203208⑆ ⑆802 118 2⑆1867

We would appreciate your business!

Total 3,180.00

Bid / Estimate

HUGGINS CONTRACTING
 David E. Huggins, Owner
 2764 Coyote Lane
 Belknap, IL 62908
 (618) 638-3553

DATE
6/29/2010

Bid/ESTIMATE #
102

BILL TO
Illinois Department of Natural Resources 8588 Route 148 Marion, Illinois 62959 Att: Christopher Evans

CONTRACT INFO
Christopher Evans, Coordinator River to River Cooperative Weed Mgmt. Area (618) 998-5920

DATE	DESCRIPTION	QTY	RATE	AMOUNT
06/29/10	Assembly and installation of combination boot brush information signs at various locations across Southern Illinois. We will assemble signs with 4"x4" treated posts. Install sign posts with rebar and a 60 lb bag of Quickcrete at the base of the sign. Construct a 2"x4" treated frame, lay weed block mat and fill base with clean native gravel.	15	212.00	3,180.00
				0.00
			Total	3,180.00

We would appreciate your business!



RIVER TO RIVER

Cooperative Weed Management Area

8588 Route 148, Marion, IL 62959 • (618) 998-5920 • rivertoriver@gmail.com • www.rtrcwma.org

RE: Press Release - New CWMA Projects

Press Release - For Immediate Release

River to River Cooperative Weed Management Area partners with Illinois Wildlife Preservation Fund Program on two invasive plant projects

The River to River Cooperative Weed Management Area (CMWA) has been awarded two new grants through the Illinois Wildlife Preservation Fund Program. The CWMA was awarded \$1,960 to establish a mobile bank of invasive plant control equipment. The CWMA has a store of equipment available for loan to landowners, organizations, and groups wanting to conduct invasive plant control days. This mobile equipment bank will greatly aid in volunteer efforts. The CWMA was also awarded \$9,800 to install 15 boot brush stations at trailheads in Southern Illinois. These boot brush stations will help educate trail users about invasive plants and allow them to clean their shoes to prevent moving invasive plant seeds. These 15 boot brushes will complement the 26 boot brushes already installed in southern Illinois.

To learn more about these new project or other CWMA efforts, please visit our website at: www.rtrcwma.org

Christopher Evans, Coordinator
River to River Cooperative Weed Management Area
8588 Route 148
Marion, IL 62959
Office: (618) 998-5920
Cell: (618) 364-7261
rivertoriver@gmail.com
www.rtrcwma.org

The River to River Cooperative Weed Management Area is a partnership between:

Illinois Department of Natural Resources · Illinois Department of Agriculture · Illinois Department of Transportation · USDA Natural Resource Conservation Service · USDA Animal and Plant Health Inspection Service · Shawnee National Forest · Crab Orchard National Wildlife Refuge · Cypress Creek National Wildlife Refuge · The Nature Conservancy · Shawnee Resource Conservation & Development Area, Inc. · University of Illinois Cooperative Extension · Southern Illinois University at Carbondale