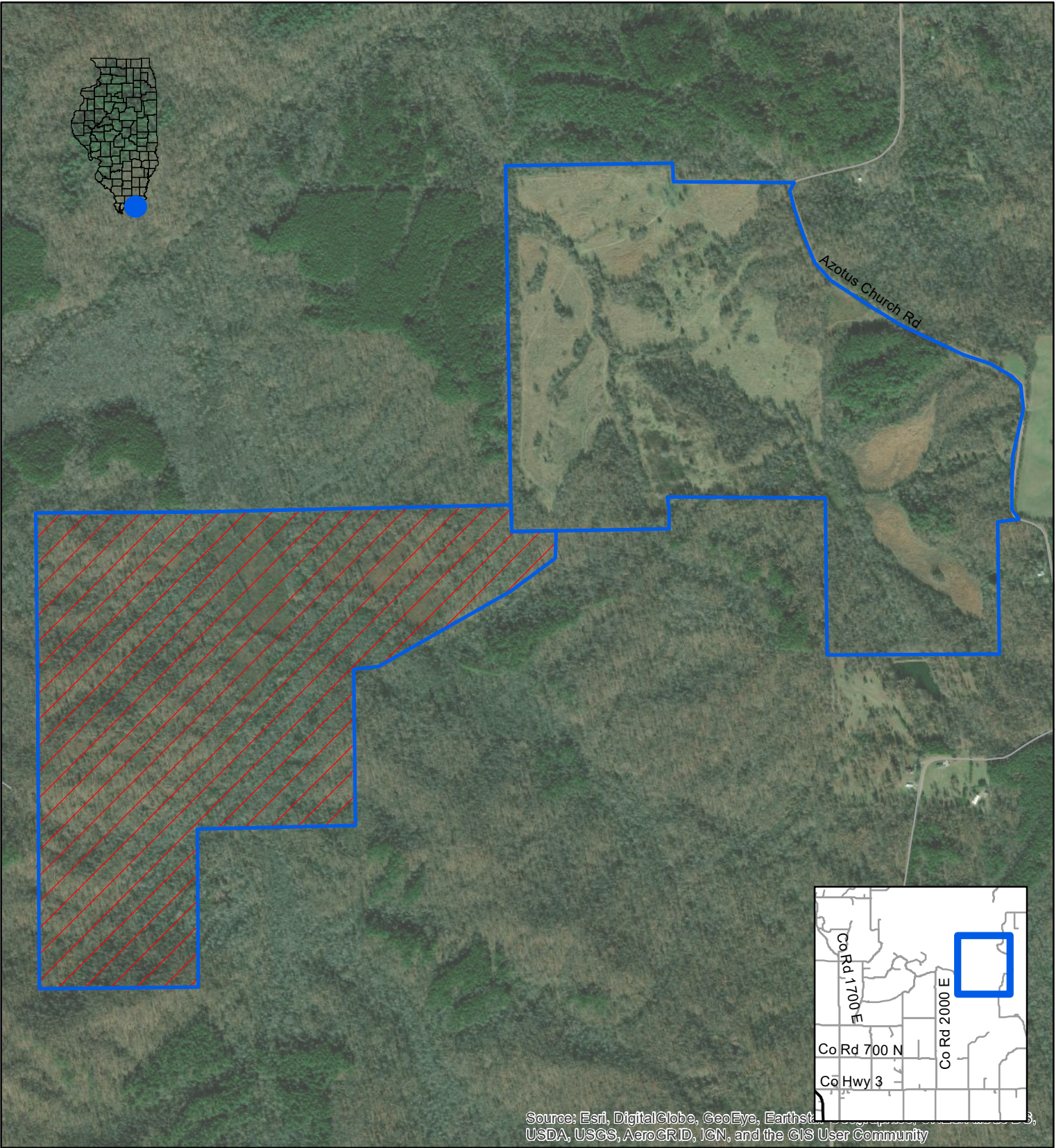




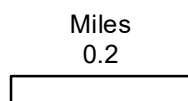


# Cretaceous Hills State Natural Area



Source: Esri, DigitalGlobe, GeoEye, Earthstar, USDA, USGS, AeroGRID, IGN, and the GIS User Community

-  IDNR Boundary
-  No Hunting - Nature Preserve



Date: 9/23/2019

C/O: Dixon Springs State Park,  
24 Park Rd,  
Golconda, IL 62938  
(618) 949-3304

For further information refer to the site's hunter fact sheet at:  
<https://www.dnr.illinois.gov/hunting/FactSheets>