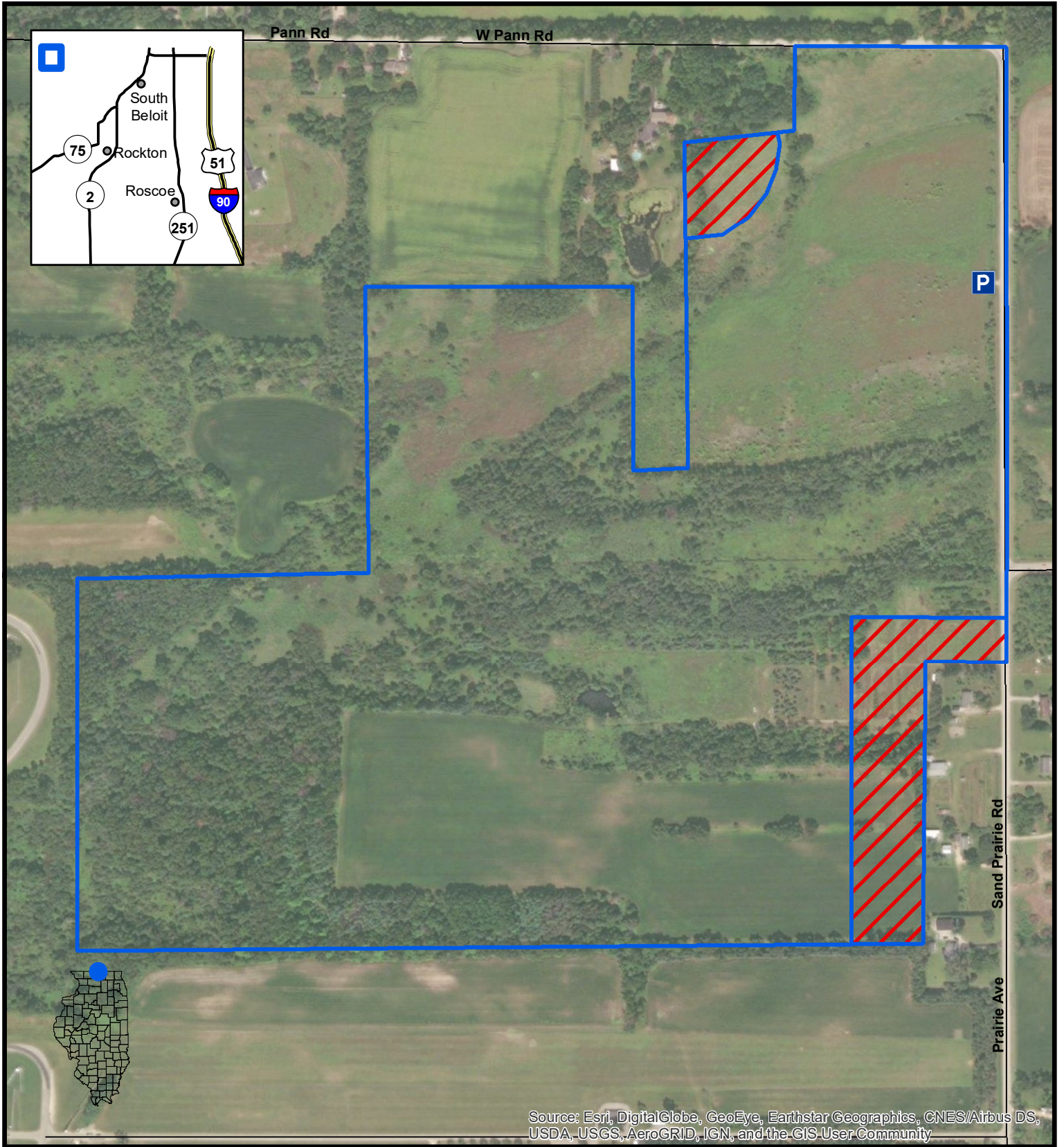







Rockton Bog

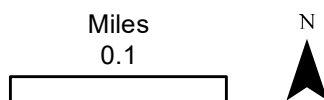


State Natural Area



Source: Esri, DigitalGlobe, GeoEye, Earthstar Geographics, CNES/Airbus DS, USDA, USGS, AeroGRID, IGN, and the GIS User Community

-  IDNR Boundary
-  No Hunting
-  Parking Lot



C/O: Rock Cut State Park, 7318 Harlem Road
Loves Park, IL 61111
Phone 815/885-3311

For further information refer to the site's hunter fact sheet at:
<https://www.dnr.illinois.gov/hunting/FactSheets>

Date: 8/3/2021