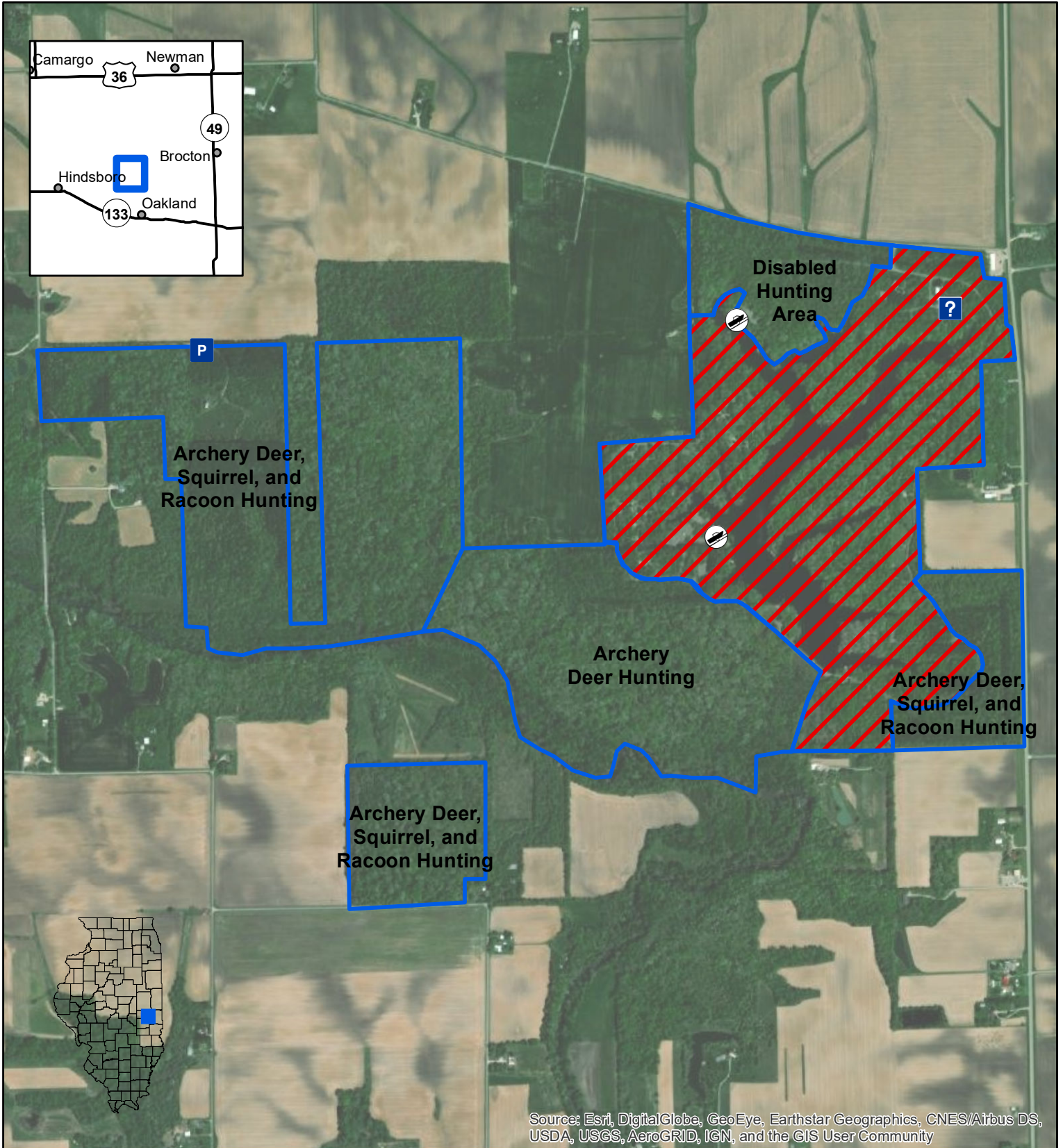
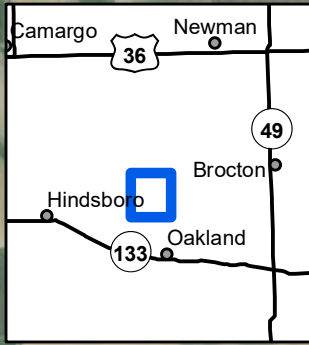




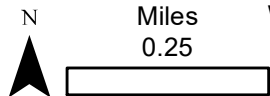
# Walnut Point

# State Park



Source: Esri, DigitalGlobe, GeoEye, Earthstar Geographics, CNES/Airbus DS, USDA, USGS, AeroGRID, IGN, and the GIS User Community

- IDNR Boundary
- No Hunting
- Parking Lot
- Boat Access
- Site Office



Walnut Point State Park, 2331 E. County Rd. 370 North  
Oakland, IL 61943  
Phone: (217) 346-3336

Date: 7/29/2021

For further information refer to the site's hunter fact sheet at:  
<https://www.dnr.illinois.gov/hunting/FactSheets>