

Date: September 17, 2009

Subject: Potable Well Survey, Hydrogeologic Assessment, and Modifications to the Groundwater Monitoring Program, Venice Ash Impoundment

From: Bruce Hensel

Background and Summary

This technical memorandum was prepared in partial response to the April 10, 2009 letter from IEPA to AmerenEG requesting a hydrogeologic assessment and potable well survey at the Venice ash impoundments. Ameren provided an initial response on May 20, 2009; in that response they noted that a groundwater monitoring program is already in-place at this facility and that a hydrogeologic report had been submitted to IEPA in January 2000. Ameren concluded by stating that additional documentation to fulfill the request of the April 10, 2009 letter would be provided within four months (by September 20, 2009). The specific elements to be provided are:

- A hydrogeologic assessment plan
- A groundwater monitoring plan
- A potable well survey

In summary, the potable well survey revealed that one (1) potential industrial well is located within a 2,500-foot radius of the Venice ash impoundments (Figure 2; Table 1). Well #1, located south of the ash impoundments, was constructed in 1943 by the Missouri-Illinois Materials Company; it is unknown at this point in time if this well is still active. The hydrogeologic assessment and groundwater monitoring plans are not yet complete, because these elements were dependent on obtaining off-site access for installation of ground-water sampling points. Ameren has diligently worked with the property owners to obtain this access, which was granted for this final property just this week. We now anticipate completion of these items in November or early December 2009.

Potable Well Survey

The Venice ash impoundments and search radius areas (Figure 2) are located in Madison County, Township 3 North, Range 10 West, south ¼ of Section 35; and St. Clair County, Township 2 North, Range 10 West, Section 2, west 1/8 of Section 1, and the north 1/16 of Sections 11 and 12. The following databases and sources of information were utilized to determine community water source and water well locations and construction details in the vicinity of the Venice ash impoundments.

- Illinois State Geological Survey (ISGS) - Water Well Database. The ISGS website provides a viewer map as well as a database query for well logs. According to ISGS, one water well is located within the search radius. The well is numbered #1 on an aerial map (Figure 2) and summary Table 1; the ISGS database boring log and well construction information are provided in Appendix A. The ISGS database also contained stratigraphic, test borings, and environmental monitoring well logs located within the search radius. These borings and monitoring wells are not included within the search results presented in this report.
- Illinois State Water Survey (ISWS) Private Well Database and Water Well Construction Reports. No private wells records were identified in the ISWS database within the search radius (Attachment A). Well construction reports, ordered from ISWS, did not include well logs for the ISGS wells nor were there additional wells located in the search radius.
- Illinois EPA web-based Geographic Information System (GIS). The Illinois EPA database website provides ArcIMS Viewer Maps (Attachment A), which provide information on community (CWS), non-community (NCWS), and public water supply (PWS) wells. The Illinois EPA system indicates CWS, NCWS, and PWS wells are not located within the search radius or within the immediate vicinity outside of the search radius (Attachment A). The Illinois EPA system confirmed the location of Well #1 identified in the ISGS database.
- Potable water for the City of Venice and the Village of Brooklyn is served by Illinois American Water Company – East St. Louis (Attachment A Illinois EPA SWAP Fact Sheet). The City of Venice has a groundwater ordinance prohibiting groundwater use for potable purposes; the Venice groundwater ordinance is not depicted on the Illinois EPA ArcIMS Viewer Map (Attachment A).

Hydrogeologic Assessment and Groundwater Monitoring Plan

Review of previous investigation reports indicates that the existing site monitoring wells conform with regulatory requirements or are otherwise consistent with industry practices. . Key items not addressed in the previous investigations include: characterization of aquifer thickness, characterization of groundwater flow at depth, and characterization of groundwater off site. These items will be addressed in the hydrogeologic assessment.

In addition, regional data will be updated.

- Regional & local geomorphology, stratigraphy, and hydrogeology will be updated as needed based on data presented in reports prepared by the Illinois State Geological and Water Surveys.
- Upstream of the site, river stage statistics will be compiled based on records maintained by the St. Louis District of the US Army Corps of Engineers for the Mississippi River at L&D 27 (lower) Granite City, IL (MI7T/0185B)
<http://mvs-wc.mvs.usace.army.mil/archive/mi/mi7t/>
- Downstream of the site, river stage statistics will be compiled based on records maintained by the St. Louis District of the US Army Corps of Engineers for the Mississippi River at St. Louis, MO (MISL/0179A)
<http://mvs-wc.mvs.usace.army.mil/archive/mi/misl/>

The Field Investigation will provide information needed to complete the hydrogeologic assessment and to develop a final groundwater monitoring plan. Field work will occur in two phases. Phase I will consist of soil borings and groundwater grab samples used to estimate the extent of the plume. The hydrogeologic assessment and groundwater monitoring plan will be based on pre-existing data and data collected during Phase I. Phase II will consist of implementation of the groundwater -monitoring plan and will involve installation of new monitoring wells to complete the well network used to define the horizontal and vertical extent of impacts.

During Phase I, ten geologic borings will be completed through the perched zone, if present, into the water table for collection of groundwater grab samples (Figure 1). The borings will be advanced using direct push (e.g., Geoprobe®) drilling methods. Groundwater grab samples will be collected using a Geoprobe® Screen Point groundwater sampler (or equivalent) and submitted to a laboratory for analysis of dissolved boron and sulfate, ash indicator parameters that can be used to delineate plume extent. The data gathered during Phase I will be used to finalize monitoring well locations and screen elevations for Phase II.

The Phase I soil borings radiate out from the southern end of the former ash ponds (orange triangles, Figure 1) to sample groundwater downgradient of the property. The borings are positioned to assess downgradient groundwater during normal groundwater flow conditions (near MW-3), reversed groundwater flow conditions (near MW-5), and the areas between.

The boring location marked “vp” near MW-7 will extend to the base of the aquifer (estimated at 100 feet below grade), or refusal of the direct push equipment. A groundwater grab sample will be collected from the top of the water table and once every 10 feet thereafter (assumed 7 samples at this location). Two

groundwater grab samples will be collected at the remaining nine boring locations: one grab sample will be taken near the water table; the other will be collected approximately 20 feet below the water table (approximately 50 feet below grade). Approximately 25 total grab samples will be submitted to the lab for analysis plus additional samples for QA/QC.

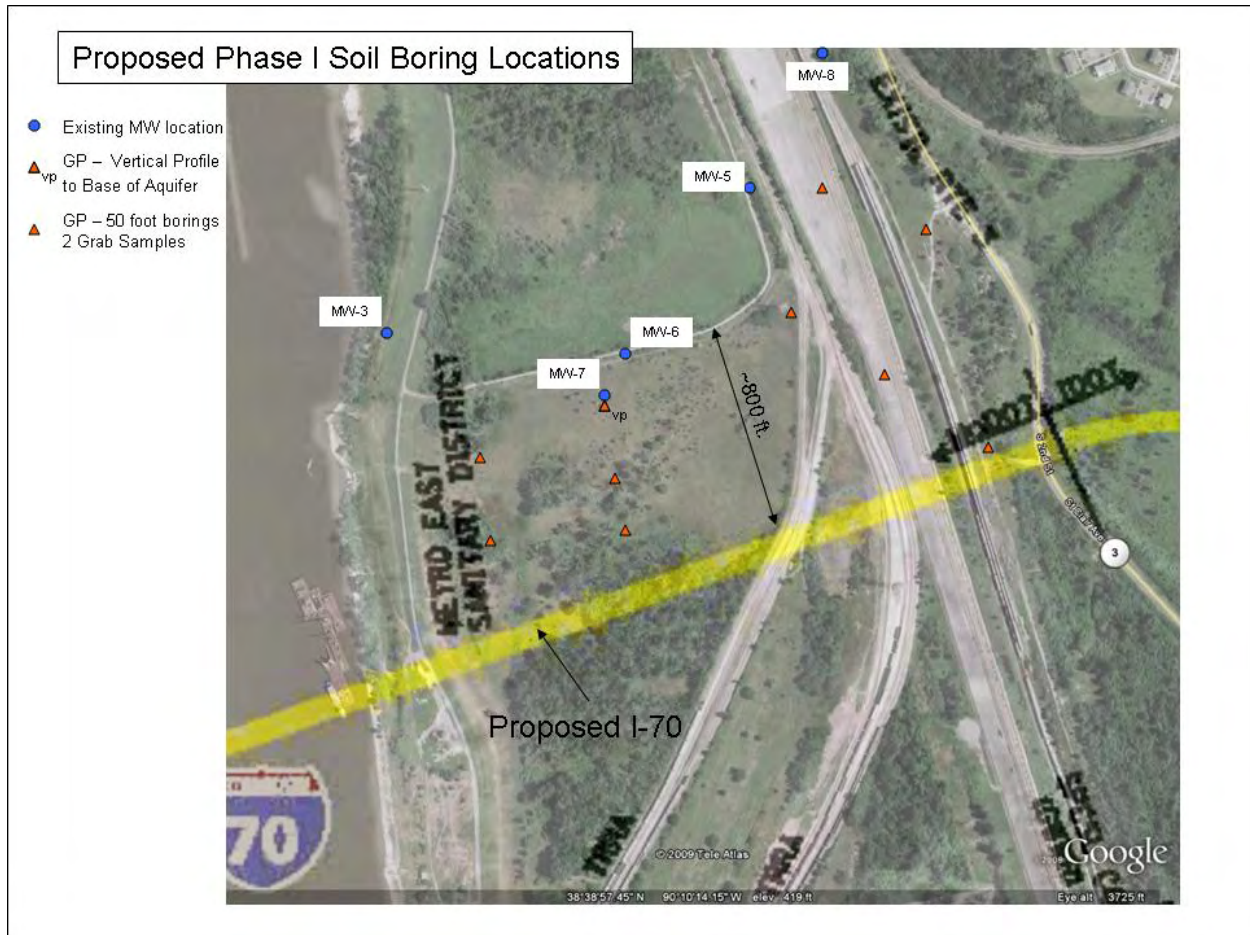


Figure 1. Proposed Phase I Soil Boring Locations.

Access Agreements

Ameren Services Company’s Real Estate Department has secured access to neighboring properties. The existing well (MW-7) and several of the proposed soil borings are located on property owned by Terminal Rail Road Association (TRRA) (Figure 1) south of the former impoundments. Existing wells (MW-8 and MW-9) and several of the proposed soil boring are located on property owned by Norfolk Southern Railway Company (NSRC) east of the former impoundments. The Representative made contact with both TRRA and NSRC to inquire about conducting the proposed soil borings. Subsequent site visits in

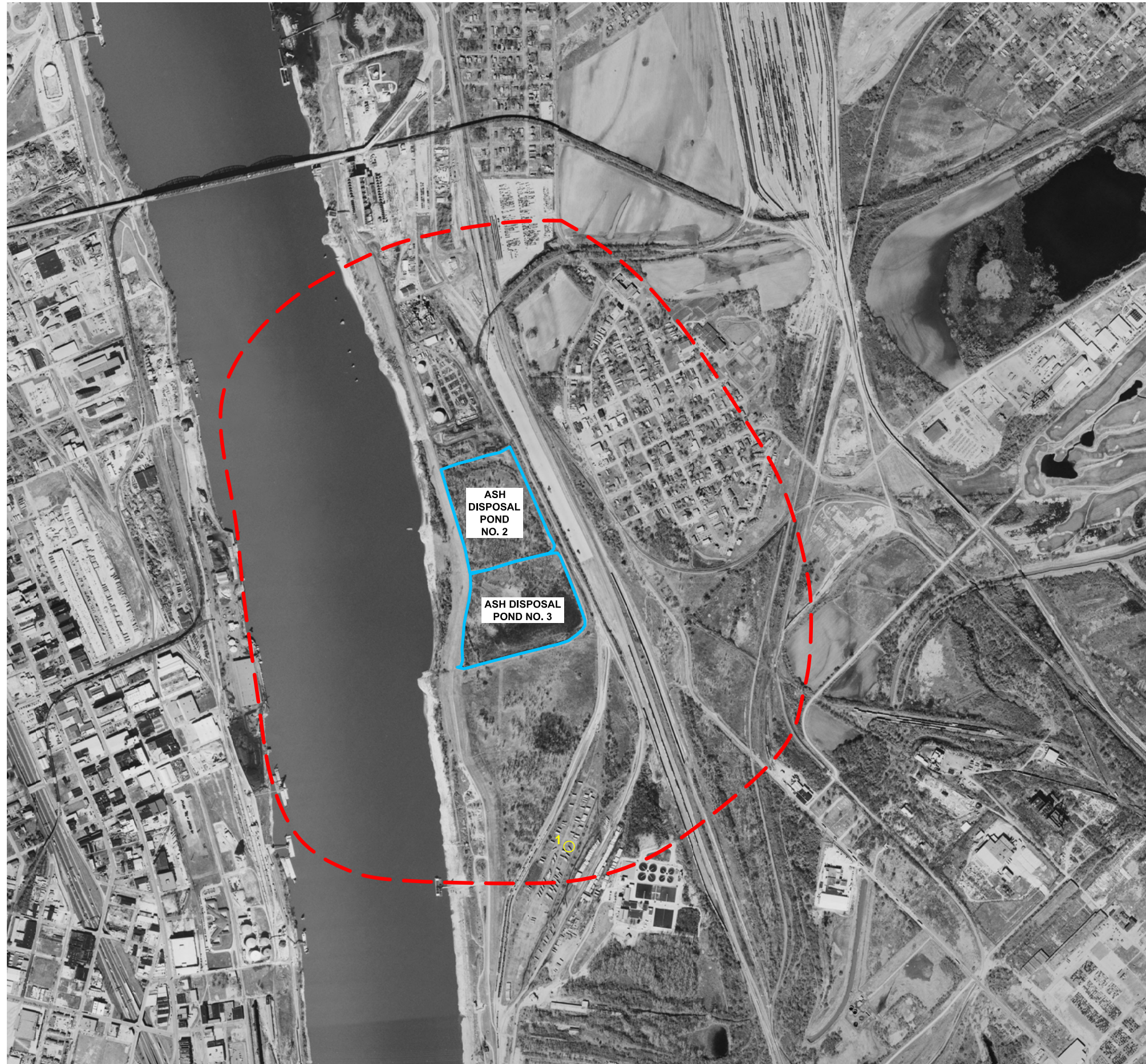
August 2009 confirmed placement of sample locations that would minimize interference with railroad activities on each site. Since the site visit in August, both Norfolk Southern and TRRA have agreed to provide access.

Schedule




A contractor will be selected to install the soil borings, sample bottles will be ordered, and NRT will mobilize to the site as soon as possible, likely in October. The soil borings and groundwater samples are anticipated to take 4 days to collect. The groundwater analysis will take approximately 4 weeks under standard turn-around times. Data interpretation, discussion, and reporting are expected to take 2 weeks after receipt from the laboratory. Given this time frame, we anticipate completion of the first phase of the hydrogeologic assessment and groundwater-monitoring plan in November or early December 2009.

FIGURE

FIGURE 2: WATER WELL LOCATION MAP (1949-11-B01C)



LEGEND

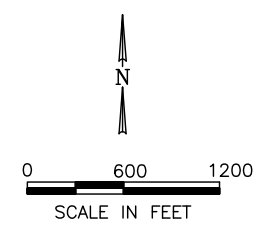
-  POTABLE WELL LOCATION
-  APPROXIMATE ASH POND BOUNDARY
-  2,500 FOOT RADIUS FROM ASH PONDS

SOURCE:
2005 DIGITAL ORTHOPHOTO FROM
ILLINOIS NATURAL RESOURCES GEOSPATIAL
DATA CLEARINGHOUSE

ILLINOIS ENVIRONMENTAL PROTECTION
AGENCY SOURCE WATER ASSESSMENT
PROGRAM (SWAP) ArcIMS MAPPING TOOL
(http://maps.epa.state.il.us/website_swap/fintro.htm).

ILLINOIS STATE GEOLOGICAL SURVEY,
DIGITAL WATER WELL RECORDS
INTERACTIVE MAP
(<http://www.isgs.illinois.edu/maps-data-pub/wfdb/wfdb.shtml>).

HASON ENGINEERS, INC., UNDATED FIGURE
"SITE PLAN, HYDROGEOLOGICAL
INVESTIGATION, VENICE POWER PLANT",
JOB NO. 9553085B.



DRAWN BY: KNW/RLH	DATE: 09/16/09
CHECKED BY: RJC	DATE: 09/16/09
APPROVED BY: BRH	DATE: 09/16/09
DRAWING NO: 1949-11-B01C	
REFERENCE: 38090f23.sid	

WATER WELL LOCATION MAP
WATER WELL SURVEY
VENICE ASH IMPOUNDMENTS
AmerenEG
VENICE, ILLINOIS



PROJECT NO.
1949/1.1

FIGURE NO.
2

TABLE

**TABLE 1. WATER WELL RECORDS WITHIN 2,500-FOOT
RADIUS OF ASH POND BOUNDARIES, VENICE POWER
STATION; VENICE, ILLINOIS**

Table 1. Water Well Records Within 2,500-Foot Radius of Ash Pond Boundaries, Venice Power Station; Venice, Illinois

Map Well #	Source of Well Information			Location Name at Time of Well Completion	Well Depth	County	Location				Year Drilled	Aquifer Type	Formation	Well Use
	ISGS	ISWS	IEPA				Township	Range	Section	Subsection				
1	121630190500	--	01905	Missouri-Illinois Materials Co	115	St. Clair	2N	10W	11	NE / NW / NE	1943	UCS	Sand and Gravel	IC

Sources of Information

IEPA Illinois Environmental Protection Agency
 ISGS Illinois State Geological Survey Database
 ISWS Illinois State Water Survey
 -- Database (ISWS Domestic Wells Database)
 -- Log (ISWS Water Well Construction Report Request)

Well Use

IC Irrigation / Industrial / Commercial Water Well
 -- Unknown

Aquifer Type

UCS Unconsolidated material

ATTACHMENT A

- ILLINOIS STATE GEOLOGICAL SURVEY WELL LOGS**
- ILLINOIS STATE WATER SURVEY PRIVATE WELL DATABASE DATA**
- ILLINOIS ENVIRONMENTAL PROTECTION AGENCY GIS DATA SUMMARY MAP**
- ILLINOIS ENVIRONMENTAL PROTECTION AGENCY SOURCE WATER ASSESSMENT PROGRAM FACT SHEET - ILLINOIS AMERICAN WATER COMPANY – EAST ST. LOUIS**

ILLINOIS STATE GEOLOGICAL SURVEY

	Top	Bottom
no log	0	80
gravel & medium sand	80	85
fine sand & gravel	85	95
medium sand & gravel	95	100
coarse sand & gravel	100	105
mud sand & gravel	110	115
Total Depth		115
Screen: 21' of 8" diameter 20 slot		
Driller's Log filed		
Permit Date:	Permit #:	

COMPANY Watson, Harold L.
FARM Missouri-Illinois Materials Co
DATE DRILLED April 1, 1943 **NO.**
ELEVATION 425GL **COUNTY NO.** 01905
LOCATION NE NW NE
LATITUDE 38.644735 **LONGITUDE** -90.170592
COUNTY St. Clair **API** 121630190500

11 - 2N - 10W



Domestic Wells Database

Sections for **10W** range, **03N** township, **Madison** county

Please choose a **section** below:

[01](#)

[12](#)

[13](#)

[24](#)

[25](#)

[36](#)

[Search for a different Range](#)

[| DWD Home](#) | [Meta Data](#) | [Location System](#) | [Disclaimer](#) | [Contact Us](#) | [Help](#) |

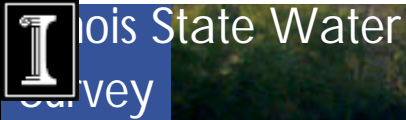
[| Domestic Well and Other Groundwater Data](#) |

Illinois State Water Survey

2204 Griffith Dr
Champaign, IL 61820-7463
217-244-5459
info@sws.uiuc.edu

Terms of use. Email the Web Administrator with questions or comments.

© 2009 University of Illinois Board of Trustees. All rights reserved.
For permissions information, contact the Illinois State Water Survey.
[Site Map](#)



About ISWS Research Data Publications Library

Domestic Wells Database

Records for **Madison** county, **03N** township, **10W** range, **36** section.

Well ID	Plot	Depth	Record Type	Well Use	Well Type	Aquifer Type	Driller	Date Drilled	Static Level	Pumping Level	Pumping GPM	Pumping Hours	ISGS No.
92598	4A	80	RG	DO	~~	~~	ST CHARLES DRILLING	07/03/1985					

[View the results in "Card Format"](#) [Search for a different Section](#)

If this page does not print correctly, change your browser's layout mode to landscape.

Please view our [Data Disclaimer](#), [Water Well Records Policies and Procedures](#), and [Plot Location System](#)

Column headings link to data explanations.

| [DWD Home](#) | [Meta Data](#) | [Location System](#) | [Disclaimer](#) | [Contact Us](#) | [Help](#) |

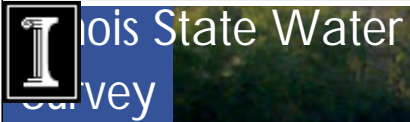
| [Domestic Well and Other Groundwater Data](#) |

Illinois State Water Survey

2204 Griffith Dr
 Champaign, IL 61820-7463
 217-244-5459
 info@sws.uiuc.edu

Terms of use. Email the Web Administrator with questions or comments.

© 2009 University of Illinois Board of Trustees. All rights reserved.
 For permissions information, contact the Illinois State Water Survey.
[Site Map](#)



Domestic Wells Database

Sections for **10W** range, **02N** township, **St. Clair** county

Please choose a **section** below:

[12](#)

[13](#)

[25](#)

[26](#)

[Search for a different Range](#)

[DWD Home](#) | [Meta Data](#) | [Location System](#) | [Disclaimer](#) | [Contact Us](#) | [Help](#) |

[Domestic Well and Other Groundwater Data](#) |

Illinois State Water Survey

2204 Griffith Dr
Champaign, IL 61820-7463
217-244-5459
info@sws.uiuc.edu

Terms of use. Email the Web Administrator with questions or comments.

© 2009 University of Illinois Board of Trustees. All rights reserved.
For permissions information, contact the Illinois State Water Survey.
[Site Map](#)



[About ISWS](#) [Research Data](#) [Publications](#) [Library](#)

Domestic Wells Database

Records for **St. Clair** county, **02N** township, **10W** range, **12** section.

Well ID	Plot	Depth	Record Type	Well Use	Well Type	Aquifer Type	Driller	Date Drilled	Static Level	Pumping Level	Pumping GPM	Pumping Hours	ISGS No.
246045	5G	415	RG	DO	--	BR	HAUDRICH DRILLING	10/14/1992			3	1	

[View the results in "Card Format"](#) [Search for a different Section](#)

If this page does not print correctly, change your browser's layout mode to landscape.

Please view our [Data Disclaimer](#), [Water Well Records Policies and Procedures](#), and [Plot Location System](#)

Column headings link to data explanations.

| [DWD Home](#) | [Meta Data](#) | [Location System](#) | [Disclaimer](#) | [Contact Us](#) | [Help](#) |

| [Domestic Well and Other Groundwater Data](#) |

Illinois State Water Survey

2204 Griffith Dr
 Champaign, IL 61820-7463
 217-244-5459
info@sws.uiuc.edu

Terms of use. Email the Web Administrator with questions or [comments](#).

© 2009 University of Illinois Board of Trustees. All rights reserved.
 For permissions information, contact the Illinois State Water Survey.
[Site Map](#)



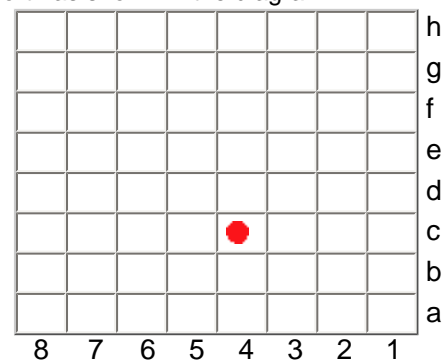
Domestic Wells Database

10-Acre Plot Location System

The following is an explanation of the ISWS Domestic Wells Database location system.

The location system uses Township, Range, and Section. The location consists of five parts: County abbreviation, Township, Range, Section, and coordinate within the section (subsection or 10-acre plot). Sections are divided into rows of c-mile squares. Each c-mile square contains 10 acres and corresponds to a quarter of a quarter of a quarter section. A normal section of 1 square mile contains 8 rows of c-mile squares; an odd-sized section contains more or fewer rows. Rows are numbered from east to west and lettered from south to north as shown in the diagram.

Example: St. Clair County, FIP No. 163
T2N, R10W
Section 23



The location of the well shown above is 163 2N10W-23.4c. The well point is located at the center of this 10-acre plot.

[| DWD Home](#) | [Meta Data](#) | [Location System](#) | [Disclaimer](#) | [Contact Us](#) | [Help](#) |

[| Domestic Well and Other Groundwater Data](#) |

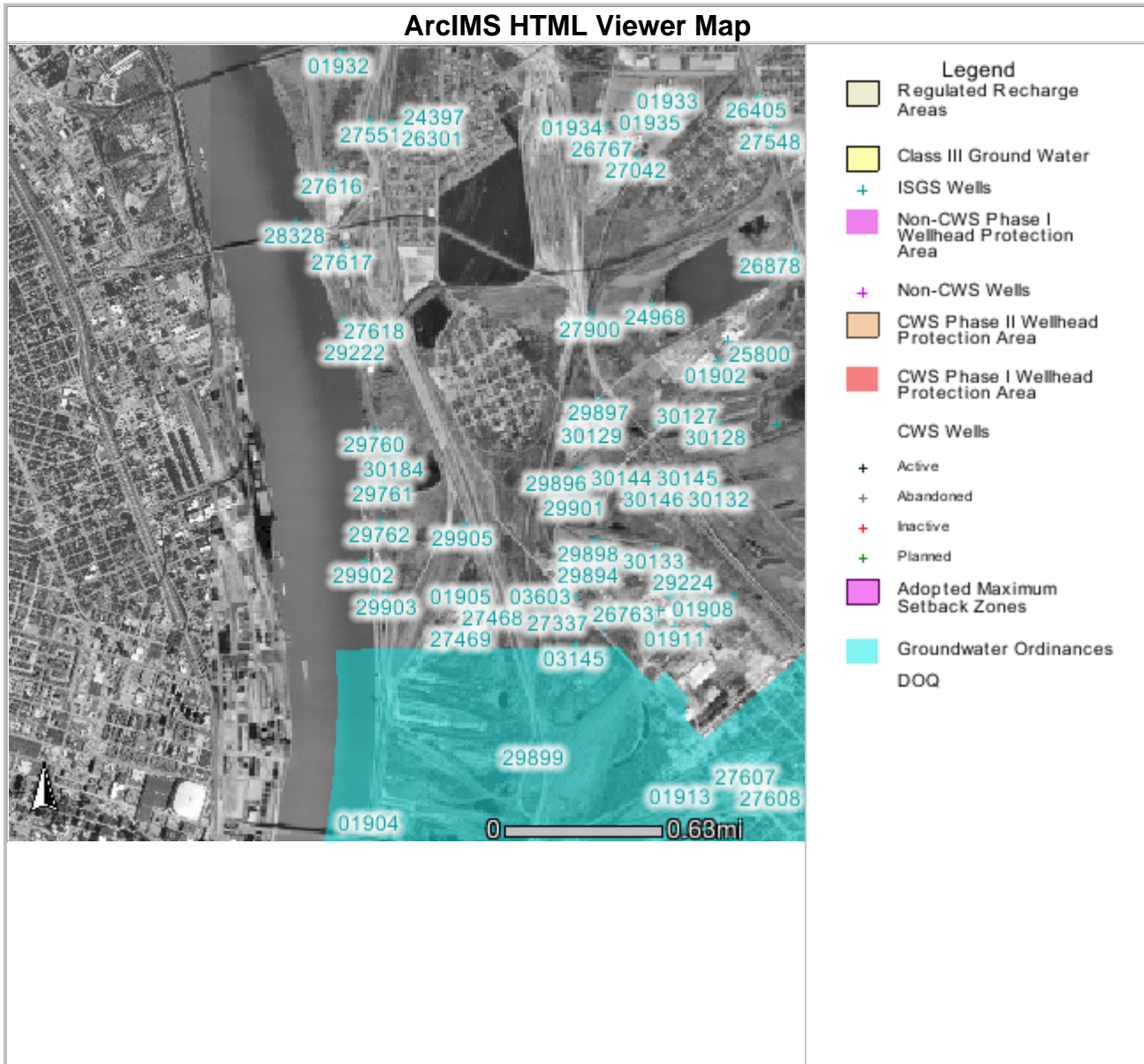
Illinois State Water Survey

2204 Griffith Dr
Champaign, IL 61820-7463
217-244-5459
info@sws.uiuc.edu

Terms of use. Email the Web Administrator with questions or comments.

© 2009 University of Illinois Board of Trustees. All rights reserved.
For permissions information, contact the Illinois State Water Survey.
Site Map

Information and data presented were obtained from various Federal, State, and local agencies and are subject to revision.



Groundwater Ordinances

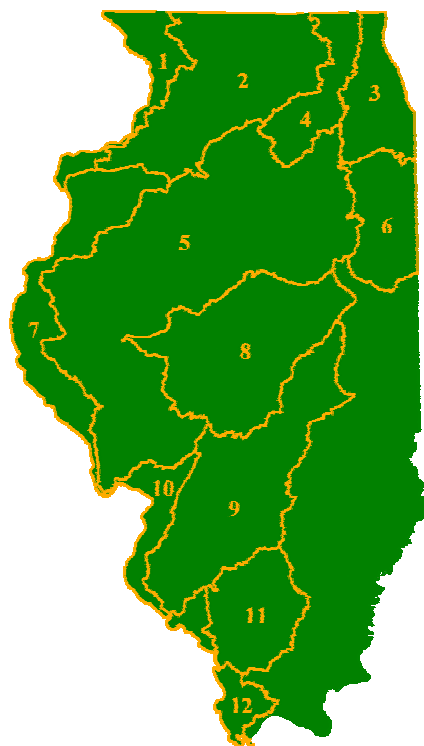
Rec	name	ord_date
1	EAST ST LOUIS	06/29/1998



Source Water Assessment Program **FACT SHEET**

Prepared in cooperation with the U.S. Geological Survey

Information and data used in the preparation of this fact sheet provided by the Illinois EPA and are subject to revision



Contributing Watersheds

1. Mississippi North
2. Rock
3. Des Plaines
4. Fox
5. Illinois
6. Kankakee
7. Mississippi North/Central
8. Sangamon
9. Kaskaskia
10. Mississippi South/Central
11. Big Muddy
12. Mississippi South

Illinois American Water Company – East St. Louis St. Clair County

IMPORTANCE OF SOURCE WATER: Drinking water for the City of East St. Louis (Facility No. 1635040) is supplied by the Illinois American Water Company (IAWC) East St. Louis Division community water supply (CWS). The Mississippi River serves as the primary source of this water. This facility draws water from the Mississippi River through one surface water intake (IEPA #60237). The supply provides an average of approximately 40.8 million gallons per day to 25,886 service connections with an estimated population of 239,683 persons in St. Clair and Monroe Counties. Facilities purchasing water from IAWC–East St. Louis include Cahokia (1630200), Caseyville (1630250), Columbia 1330050), Commonfields of Cahokia PWD (1635030), O’Fallon (1631100), Millstadt (1630850), Waterloo (1330300), John Deshields Federal Housing

Complex (1630020), Southwestern Illinois Correctional Center (1630030) and Scott AFB (1635237).

SOURCE WATER LOCATION: **Figure 1** shows the entire Upper Mississippi River Watershed. This watershed covers a substantial portion of the United States, and includes parts of seven states of concern to the Source Water Assessment in Illinois. **Figure 2** is a map of the critical area in Illinois associated with the surface water intakes for several community water supplies utilizing the Mississippi River, including East St. Louis. In Illinois, the following sub-watersheds contribute to the Mississippi River:

- **Mississippi North River Watershed** covers 710,400 acres in Illinois and includes portions of Jo Daviess, Stephenson, Carroll, Whiteside, Rock Island, and Mercer Counties. The Apple, Galena, and Plum rivers are the major river systems in the watershed. The largest population areas in the watershed are Moline (43,127), Savanna (3,819), Fulton (3,698), Galena (3,647), and East Dubuque (1,914).
- **Rock River Watershed** covers a total of 1,374,187 acres in northern Illinois. The major cities in the watershed are Rockford (139,943), Moline (43,127), Rock Island (40,630), Sterling (15,142), and Dixon (15,134). Major streams, which comprise the Rock River Watershed, include the Rock River, Pecatonica River, Rock Creek, and Mill Creek.

- **Des Plaines River Watershed** covers a total of 854,669 acres in Lake, Cook, DuPage, and Will Counties. Major streams that comprise the Des Plaines River Watershed include the Des Plaines River, DuPage River, Chicago Sanitary and Ship Canal, Salt Creek, and Indian Creek.
- **Fox River Watershed** covers a total of 391,966 acres in Lake, McHenry, Cook, Kane, and DuPage Counties. The majority of the watershed is in agricultural lands with expanding urban areas. Major population areas in the watershed are Aurora (99,556), Elgin (77,010), St. Charles (22,847), Batavia (17,076), and Geneva (14,563). Major streams within the Fox River Watershed include the Fox River, Boone Creek, Poplar Creek, Nippersink Creek, and Flint Creek.
- **Illinois River Watershed** covers an area in excess of 8,600,000 acres in Illinois. Some of the larger cities located in this watershed are Peoria (113,504), Jacksonville (19,327), Macomb (20,129), Ottawa (17,541), Streator (14,121), and Morton (13,799). Major streams in this watershed include the Illinois River, Mazon River, La Moine River, Spoon River, Vermilion River, and Mackinaw River.
- **Kankakee/Iroquois River Watersheds** are located in east central Illinois and has one major tributary, the Iroquois River, which flows west from Indiana. The Kankakee/Iroquois River Watersheds cover a total of 1,375,068 acres. Major urban areas in these watersheds include Kankakee (25,575), Bourbonnais (13,934), Bradley (10,792), Wilmington (4,743), and Momence (2,968).
- **Mississippi North Central River Watershed** covers a total of 1,210,503 acres in west central Illinois. The largest cities in the watershed are Galesburg (33,530) Monmouth (9,489), Quincy (39,681) and Pittsfield (4,231). Major streams in the Mississippi North Central River Watershed include Henderson Creek, Edwards River, Pope Creek, Bay Creek, Hadley Creek, and Bear Creek.
- **Sangamon River Watershed** covers a total of 2,191,570 acres in central Illinois. Some of the cities located in the watershed include Springfield (105,227), Taylorville (11,133) and Decatur (83,900). Major streams within the Sangamon River Watershed include the Sangamon River, Sugar Creek, Spring Creek, Mosquito Creek, and Friends Creek.
- **Kaskaskia River Watershed** covers a total 3,657,207 acres in south central/southwest Illinois. Major cities in the watershed are Belleville (42,806), O'Fallon (16,073), Pana (5,796), Shelbyville (4,943) Vandalia (6,144), Greenville (5,108), and Sullivan (4,354). Major streams in the Kaskaskia River Watershed include the Kaskaskia River, Robinson Creek, Crooked Creek, Shoal Creek, and Silver Creek.
- **Mississippi South Central River Watershed** in southwestern Illinois covers 746,111 acres in Calhoun, Jersey, Macoupin, Madison, St. Clair, Monroe, and Randolph Counties. The largest cities in the watershed are Belleville (42,806), Edwardsville (34,582), Alton (33,064), Granite City (32,769), Collinsville (22,424), and Godfrey (16,085). Major streams within the watershed include the Mississippi River, Fountain Creek, Cahokia Creek, Wood River, and Piasa Creek.
- **Big Muddy River Watershed** drains 1,510,655 acres in Washington, Jefferson, Perry, Franklin, Jackson, and Williamson Counties. The largest cities in the watershed are Carbondale (27,033), Mt. Vernon (17,000), and Marion (14,545). Major tributaries within the Big Muddy Watershed include Casey Fork, Middle Fork Big Muddy, Little Muddy River, Crab Orchard Creek, and Beaucoup Creek.

- **Mississippi South River Watershed** consists of a small area covering a total of 433,562 acres in Randolph, Perry, Jackson, Union, Alexander, and Pulaski Counties in extreme southwest Illinois. The largest cities in the watershed are Chester (8,204) and Steeleville (2,059). Major streams within the Mississippi South River Watershed include the Marys River, Clear Creek, and Sexton Creek

It should be noted that several of these watersheds contributing to the Mississippi River actually enter the river downstream from the IAWC-East St. Louis surface water intakes; therefore they do not affect source water quality for the East St. Louis CWS. The portion of this area considered most critical for water quality concerns at the IAWC-East St. Louis intake is shown in **Figure 2**. The majority of the landuse within these watersheds is agricultural (60%); other landuses in the watersheds are forest/grassland (30%), water/wetland (5%), urban (4%), and transportation (1%). The critical area is intended to assist in emergency preparedness and contingency planning in the event of a release within this area. This critical area is divided into three zones. Zone 1 consists of a quarter mile buffer on either side of the river, extending from a quarter mile downstream of the CWS surface water intake to twenty-five miles upstream (or the five hour time of travel). Zone 2 is the 14-digit Hydrologic Unit Code (HUC) watershed(s) that contain Zone 1. Zone 3 is the 8-digit HUC watershed that contains Zone 2. The entire Zone 3 is shown in **Figure 3**.

SOURCE WATER QUALITY: Waters not attaining water quality standards with technology-based controls alone (e.g. water quality limited) must be identified in accordance with Section 303(d) of the Federal Clean Water Act (CWA). Water body segments (streams) within this watershed are included on the 303(d) list. An explanation of how water body segments are rated can be found in the document entitled "Guidance For Developing Watershed Implementation Plans In Illinois", available from the Watershed Management Section. For information pertaining to the water bodies or watersheds discussed on this fact sheet, refer to the CWA Section 303(d) list: Illinois' submittal for 1998. This document can be obtained by contacting the Watershed Management Section of the Bureau of Water at 217/782-3362.

A total of 880 stream miles were assessed in the Mississippi North River Watershed. Overall resource quality is "good" on 533 stream miles (60%), and "fair" conditions exist on 347 stream miles (40%). A total of 938 stream miles were assessed in the Rock River Watershed. Overall resource quality is "good" on 723 stream miles (77%), and "fair" conditions exist on 215 stream miles (23%). A total of 685 stream miles were assessed within the Des Plaines River Watershed. Overall resource quality is "good" on 165 stream miles (24%), "fair" on 481 stream miles (70%), and "poor" on 39 stream miles (6%). A total of 806 stream miles were assessed in the Fox River Watershed. Overall resource quality is "good" on 680 stream miles (84%) and "fair" on 126 stream miles (16%). A total of 6,473 stream miles were assessed in the Illinois River Watershed. Overall resource quality is "good" on 4,694 stream miles (73%) and "fair" on 1,779 stream miles (27%). A total of 970 stream miles were assessed in the Kankakee/Iroquois River Watershed. The watersheds are exceptional water systems, as the watersheds have "good" overall resource quality for 893 stream miles (92%). Only 77 stream miles (8%) are rated as "fair." A total of 1,741 stream miles were assessed in the Mississippi North Central River Watershed. Overall resource quality is "good" on 1,226 stream miles (70%), "fair" on 513 stream miles (30%). A total of 1,414 stream miles were assessed in the Sangamon River Watershed. Overall resource quality is "good" on 545 stream miles (39%), "fair" on 841 stream miles (59%), and "poor" on 28 stream miles (2%). A total of 2,962 stream miles were assessed in the Kaskaskia River Watershed. Overall resource quality is "good" on 1,556 stream miles (52.5%) and "fair" on 1,390 stream miles (47%) and "poor" on 16 stream miles (0.5%). A total of 747 stream miles were assessed within the Mississippi South Central Watershed. Overall resource quality is "good" on 168 stream miles (23%), "fair" on 544 stream miles (72%), and "poor" on 35 stream miles (5%). A total of 1,480 stream miles were assessed in the Big Muddy River Watershed. Overall resource quality is "good" on 227 stream miles (15%) and "fair" on 1,253 stream miles (85%). A total of 390 stream miles were assessed in the Mississippi South River Watershed. Overall resource quality is "good" on 72 stream miles (18%) and "fair" on 318 stream miles (82%).

FINISHED WATER QUALITY: Finished water quality monitoring data are available at <http://www.epa.gov/>. This data includes tables of monitored parameters and any contaminants detected, including any health advisory information, drinking water standards, or maximum contaminant levels (MCLs). In addition, similar information is also available in the Consumer Confidence Report supplied by the IAWC-East St. Louis CWS to its customers.

POTENTIAL SOURCES OF CONTAMINATION: The phrase “potential source” is expressly used here to describe sources existing in possibility or having the capability of becoming a source of contamination. The term “point source” is used to distinguish it from the term nonpoint source. Nonpoint source pollution is the diffuse, intermittent runoff of pollutants from various sources. **Figure 2** shows the locations of known potential point sources of contamination in relation to the critical area of the Upper Mississippi River Watershed. This information was obtained from various electronic databases. The names of potential point sources of contamination identified in **Figure 2** are listed in **Table I**. The sites listed in **Table I** are considered “potential” sources of contamination due to: the nature of the activity; the availability of data in electronic databases; and their geographic proximity¹ to the source water protection area. These are divided into seven different types of sources that are classified by the following abbreviations: CERCL = Comprehensive Environmental Response, Compensation, and Liability Act (CERCLA)² site; CU = cleanup (sites that are actively doing cleanups); LF = landfill; NPDES = National Pollutant Discharge Elimination System discharge point; RCRA = Resource Conservation and Recovery Act³ site; LU = Leaking Underground Storage Tank (sites with leaking underground storage tanks that have not received a No Further Remediation letter); and TRI = Toxic Release Inventory site (a site that has had a toxic release to a receiving stream or publicly owned treatment works).

A major concern for the above sub-watersheds is the nutrient loading and other effects due to agricultural activities and other nonpoint sources of pollution. Precipitation moving over and through the ground picks up pollutants from these sources and carries them into rivers, lakes, and groundwater. Major sources that contribute to Illinois’ nonpoint source pollution problems are agriculture, construction erosion, urban runoff, hydrologic modifications, and resource extraction activities. Potential nonpoint source contaminants of concern include waterborne pathogens such as *Cryptosporidia*, *E. coli*, *Giardia* and fecal coliform, as well as nitrogen and herbicides such as atrazine. *Cryptosporidium* is a single cell disease-causing parasite that lives in wildlife, livestock and domestic animals. If these animals live near bodies of water they may serve as carriers of the parasite. **Figure 3** shows the land use patterns in the watersheds of concern, noting the degree of agricultural usage versus other land use activities. **Figure 4** presents the livestock and wildlife density in various counties within the watershed for reference. Livestock densities are based on actual numbers of cattle, hogs, sheep, goats and horses per county; wildlife densities are based on the estimated number of whitetail deer per county. Due to their ability to adapt to different environments, whitetail deer are a good indicator of wildlife density on a countywide level. **Figures 5 and 6** provide an estimate of nitrogen usage in the Illinois portion of the Mississippi River Watershed and the entire Upper Mississippi River Watershed, respectively. **Figure 5** also shows median nitrate detections by watershed derived from Illinois EPA’s Ambient Stream Monitoring Network. Similarly, in **Figures 7 and 8**, herbicide usage is illustrated in the Illinois portion of the Mississippi River Watershed and the entire Upper Mississippi River Watershed, respectively. Herbicides depicted in **Figures 7 and 8** include: atrazine, alachlor, metolachlor, EPTC, trifluralin, 2,4-D, cyanazine, butylate, pendimethalin, and bentazon.

SUSCEPTIBILITY TO POTENTIAL CONTAMINATION: Illinois EPA considers all surface water sources of community water supply to be susceptible to potential pollution problems, hence, the reason for mandatory treatment for all surface water supplies in Illinois. Mandatory treatment includes coagulation,

¹ Locations of potential sources are approximate and intended for watershed based inventories only, not for site specific evaluations.

² “CERCLA” means Superfund site.

³ “RCRA” requires that generators, transporters, treaters, storers, and disposers of hazardous waste provide information concerning their activities to state environmental agencies.

sedimentation, filtration, and disinfection. Within the Illinois portion of the Mississippi River Watershed, which is illustrated in **Figure 3**, many commodities, including manufactured goods, petrochemicals, and pesticides are transported along the river system. The production, storage, and transportation of these commodities are a major concern, especially when occurring near surface water intakes. In addition, agricultural runoff within the Illinois portion of the Mississippi River Basin contributes to the susceptibility of the IAWC-East St. Louis intakes. With high flow rates and long distances of travel on the Mississippi River, critical areas can be extensive. The critical area for the IAWC-East St. Louis intake was determined using data from a joint U. S. Environmental Protection Agency/U. S. Geological Survey project. This project used a computer modeling program (SPARROW) to determine travel times on major rivers in the United States.

Accidental spills of hazardous materials into navigable waterways are a major concern because of their frequency in the United States in recent years. Illinois has access to 1,116 miles of inland waterway that can handle commercial barge traffic. These include the Upper Mississippi River, Illinois River Waterway, and the Ohio River. Along these waterways are numerous facilities that load and unload hazardous materials. Analysis of reported spills indicate that between 1974 and 1989, 794 accidental spills of hazardous materials occurred along Illinois waterways. Approximately 92% of these spills occurred along the Mississippi and/or the Illinois River. **Figure 2** shows the critical area of concern (Zone 1) for the IAWC-East St. Louis surface water intake. Spills occurring in this critical area will travel to the intake in five hours or less, making contingency planning and spill reporting a major concern in this watershed. Information concerning spill response planning on the Mississippi River may be found at the U. S. EPA website www.epa.gov/region5/oil, and additional data can also be downloaded at the U. S. Geological Survey's FTP site ftp://ftp.umesc.er.usgs.gov/pub/gis_data/oil_spill.

WATERSHED PROTECTION EFFORTS: Under Section 319 of the Federal Clean Water Act, U.S. EPA provides grants for the Illinois EPA to finance projects that demonstrate cost-effective solutions to NPS pollution problems and promote public knowledge and awareness of NPS pollution. Projects in the Illinois portion of the Mississippi Watershed have included:

- On going programs in the North Mississippi, Des Plaines, Illinois, Sangamon, and Fox River Watersheds to reduce siltation and improve water quality.

Within the Illinois portion of the Mississippi River Watershed, the Illinois River Watershed has been identified as one of the most significant natural resources in the state. Protection and enhancement of this natural resource is a priority concern of the State of Illinois. In order to focus public attention and identify resource needs, several initiatives are underway including:

- Integrated Management Plan for the Illinois River Watershed – Under the Chairmanship of Lieutenant Governor Corrine Wood, an Illinois River Strategy Team has been formed. This group of public and private sector representatives forms the Illinois River Planning Commission and develops recommendations regarding environmental and economic issues on the Illinois River. These recommendations are the heart of an Integrated Management Plan, which in turn became the foundation for the Illinois River Restoration and Conservation Grant Act.
- Illinois River Restoration and Conservation Grant Act – This Act establishes an interagency body to develop and administer a grant program to fund local watershed management projects. The Act also established the Illinois River Coordinating Council to advise on grant awards and make recommendations towards the betterment of the Illinois River.
- Conservation Reserve Enhancement Program – The Conservation Reserve Enhancement Program (CREP) is a cooperative effort between the USDA and the State of Illinois to protect water quality in the

Illinois River and some of its tributaries. USDA and Illinois will work with other Federal, State and local authorities to reduce sedimentation and runoff, and encourage the growth of local wildlife. The Illinois program will establish CRP contracts with owners and operators of farm properties to plant specific kinds of vegetation near streams and rivers in return for rental payments and other incentives. More information on CREP may be found on Illinois DNR's website at <http://dnr.state.il.us>.

In an effort to minimize the impact of livestock facilities on water resources on a statewide basis, livestock facilities are now regulated under the Livestock Management Facilities Act. This legislation is designed to keep Illinois' livestock industry productive and environmentally responsible by establishing requirements for design, construction, operation and management of livestock facilities and waste-handling structures. Detailed information on the Livestock Management Facilities Act may be found at the website <http://www.agr.state.il.us>. In addition, the watershed protection efforts and priorities of the Illinois EPA, Illinois Department of Agriculture, Illinois Department of Natural Resources, U.S. Department of Agriculture's Natural Resources Conservation Service, U.S. Army Corps of Engineers, and The Nature Conservancy are described and illustrated at the website: <http://www.epa.state.il.us/water/unified-watershed-assessment/index.html>.

In order to help farmers in adopting sound agricultural practices, The Illinois Council on Best Management Practices (C-BMP) was formed. The Council is a coalition of agribusiness and agricultural producer organizations with the support of the University of Illinois Extension and serves as a clearinghouse on current research to protect water quality in Illinois. The Council also provides information and support to local watershed groups to help implement sound water quality initiatives and can offer educational assistance and help facilitate the technical and financial resources needed to carry out water quality objectives. For more information on C-BMP contact Dr. George Czapar, Springfield Extension Center, P.O. Box 8199, Springfield, IL 62791, email: g-czapar@uiuc.edu.

Table I

MAP ID	FACILITY NAME	SOURCE TYPE
1	COMMUNITY UNIT SCH DIST 1	LU
2	QUINCY, CITY OF	LU
3	DEPT OF CORRECTIONS	LU
4	GRAFTON, CITY OF	LU
5	SENGER BOTTLE GAS CO	LU
6	PRINCIPIA COLLEGE	LU
7	PRINCIPIA COLLEGE	LU
8	AT&T	LU
9	BRUCKERTS CHEVROLET INC	LU
10	DON RAY FUEL SERVICE	LU
11	BRUCKERTS CHEV INC	LU
12	ALTON COMMUNITY UNIT DIST 11	LU
13	ENCLEAN OF IL, HYDRA-BLASTING	LU
14	ENCLEAN OF IL, HYDRA-BLASTING	LU
15	PEPSI COLA BOTTLING CO	LU
16	ROBERTS MOTORS INC	LU
17	THOME CZEK OIL	LU
18	SHELL, BILL ROLLER	LU
19	KILNGAS R & D INC	LU
20	BRAKE PLUS	LU
21	FOSTERBURG GARAGE	LU
22	HAROLD HART SERVICE	LU

23	KINDER SHELL	LU
24	STUTZ SVC INC	LU
25	ERNIES AUTO SVC	LU
26	ZOELNER REALTY	LU
27	MOBIL-JIMS	LU
28	THOMAS OIL CO	LU
29	K MART	LU
30	THOMACZEK OIL	LU
31	HISE, DELBERT	LU
32	ALTON COMMUNITY SCHOOL DIST 11	LU
33	HENNEKES, TOM	LU
34	ALTON, CITY OF	LU
35	PIASA METRO	LU
36	KIENSTRA INC	LU
37	CORBIN, AL	LU
38	AMOCO, BETHALTO	LU
39	BETHALTO COMMUNITY SCHOOL DIST	LU
40	MINSE, ED JR	LU
41	HIT-N-RUN	LU
42	PAUL F BRUNE TRUST	LU
43	OLIN BRASS & WINCHESTER INC	LU
44	OLIN BRASS & WINCHESTER INC	LU
45	OLIN BRASS & WINCHESTER INC	LU
46	OLIN BRASS & WINCHESTER INC	LU
47	OLIN BRASS & WINCHESTER INC	LU
48	OLIN BRASS & WINCHESTER INC	LU
49	OLIN BRASS & WINCHESTER INC	LU
50	AIRLINE STANDARD	LU
51	SIMPSONS AUTO SVC	LU
52	U-HAUL	LU
53	PIASA MOTOR FUELS	LU
54	KELLER EXCAVATING CO	LU
55	KELLER EXCAVATING CO	LU
56	CLARK OIL	LU
57	FORMER COASTAL MART 1420	LU
58	AMOCO OIL CO	LU
59	MADISON SERVICE COMPANY	LU
60	AMOCO, ERNST	LU
61	PAUL, ELSIE	LU
62	SOUTHERN FOOD PARK INC	LU
63	NATIONAL SUPERMARKETS INC	LU
64	LARRYS HAIR & SKIN STUDIO	LU
65	WEINACHT, HENRY	LU
66	AQUINAS TECHNOLOGIES	LU
67	MOTO INC	LU
68	LIDLAW TRANSIT INC	LU
69	CITY TIRE COLLECTION	LU
70	AMOCO OIL CO	LU

71	BAKER, ELMER	LU
72	BENTON DRUMMING CORP	LU
73	BENTON DRUMMING CORP	LU
74	BENTON DRUMMING CORP	LU
75	K MART	LU
76	GRANITE CITY, CITY OF	LU
77	GRANITE CITY, CITY	LU
78	R DRON ELECTRICAL CO. INC	LU
79	HEDIGER, MILDRED	LU
80	FIRST EXCHANGE BANK CAPE GIRAR	LU
81	AMERICAN COLLOID CO	LU
82	CLARK OIL 271	LU
83	MAD HATTER AUTO REPAIR	LU
84	ILLINOIS AMERICAN WATER CO	LU
85	MADISON AVE SONIC	LU
86	COMMUNITY SCH DIST UNIT 9	LU
87	FIRST GRANITE CITY SAVINGS	LU
88	CLARK OIL & REFINING	LU
89	GRANITE CITY PARK DIST	LU
90	TRIANGLE AUTO SALES	LU
91	CALVARY BAPTIST CHURCH	LU
92	B&L IND	LU
93	VILLAGE SHOPPING CENTER	LU
94	IL POWER CO	LU
95	GUARANTEED TRANSMISSION SERV	LU
96	SCUDDER, JOANNE	LU
97	G&G CAR WASH	LU
98	BEELMAN TRUCK CO	LU
99	KELLER OIL	LU
100	AMOCO	LU
101	SMITH, RAY	LU
102	MARTIN & BAILEY INC	LU
103	CLARK OIL	LU
104	ROXANA SCHOOL DIST #1	LU
105	BARTON CONTRACTORS	LU
106	BARTON CONTRACTORS	LU
107	BARTON CONTRACTORS	LU
108	GATEWAY WESTERN RAILWAY	LU
109	GATEWAY WESTERN RAILWAY	LU
110	BISSELL STREET WAREHOUSE CO	LU
111	WAL-MART STORES INC	LU
112	BLAND CONSTRUCTION CO	LU
113	TRICKEYS SVC INC	LU
114	KIENSTRA INC	LU
115	AMOCO, LIGHT OIL DISTRIBTION	LU
116	AMOCO, LIGHT OIL DISTRIBTION	LU
117	BERNIES GAS	LU
118	KANE MECHANICAL INC	LU

119	CG&S TRUCKING	LU
120	KELLER OIL	LU
121	ARNOLD LAKESIDE ROOFING	LU
122	ARNOLD LAKESIDE ROOFING	LU
123	STOP N GO LIQUOR	LU
124	CLARK REFINING & MARKETING	LU
125	FIX O FLAT III	LU
126	BECKER AUTOMOTIVE	LU
127	BECKER AUTOMOTIVE	LU
128	CHIEFS QUIK STOP INC	LU
129	CAHOKIA MOUNDS	LU
130	AMOCO-JOUETTS	LU
131	NORTH ALTON PARTNERS	LU
132	GODFREY SUNOCO	LU
133	TOLLES REALTY CO	LU
134	GODFREY SHELL	LU
135	OBLATE & FATHERS	LU
136	CLARK OIL & REFINING	LU
137	BEVERLY FARMS	LU
138	BEVERLY FARMS	LU
139	CLARK OIL 1554	LU
140	ALJETS AUTOMOTIVE INC	LU
141	ROSEWOOD CHIROPRACTIC CLINIC	LU
142	HOLDEN, ALAN	LU
143	ALADIN RESTAURANT CORP	LU
144	NEIGHBORHOOD SERVICE CENTER	LU
145	MIDWEST PETROLEUM	LU
146	SUNDERMANS GARAGE	LU
147	BROWN, MIKE	LU
148	VALMEYER SCHOOL DIST 3	LU
149	WATERLOO, CITY OF	LU
150	WEST PIKE COM UNIT SCH DIST 2	LU
151	BRAUN OIL CO	LU
152	GR GROUP INC	LU
153	UNITED PARCEL SERVICE	LU
154	CG LAND TRUST	LU
155	CG LAND TRUST	LU
156	AMOCO OIL CO	LU
157	ST. HENRY'S OBLATE RESIDENCE	LU
158	STOOKEY TWP HWY DEPT	LU
159	SITE OIL COMPANY	LU
160	SIGNAL HILL SCHOOL SYS	LU
161	DICKERSON PETROLEUM	LU
162	AMOCO OIL CO	LU
163	PHILLIPS PIPE LINE CO	LU
164	AMOCO 5335	LU
165	AMOCO OIL CO	LU
166	WARECO SERVICE STA 974	LU

167	CLARK REFINING & MARKETING	LU
168	CLARK OIL 713	LU
169	HEITMAN, VICTOR	LU
170	PENNOCKS GARAGE	LU
171	CASPER STOLLE QUARRY & CONTRAC	LU
172	MOFFIT OIL CO	LU
173	MARTIN GAS STATION	LU
174	IL BELL	LU
175	JUL FISHER DISTRIBUTOR INC	LU
176	GENERAL CHEMICAL CORP	LU
177	ILLINOIS POWER CO	LU
178	AKZO NOBEL RESINS	LU
179	BI STATE DEVELOPMENT	LU
180	BI STATE DEVELOPMENT	LU
181	TERMINAL RAILROAD ASSOC	LU
182	LEWIS BAKERIES INC	LU
183	C&S AUTO PLAZA	LU
184	ARATEX SERVICES INC	LU
185	FA STEIN OIL CO	LU
186	CERMAK, ANTHONY	LU
187	EAST ST LOUIS HOUSING AUTHORTY	LU
188	CLARK REFINING & MARKETING	LU
189	GLEN AMBULANCE SVC	LU
190	DEPT OF CORRECTIONS	LU
191	ILLINOIS AMERICAN WATER CO	LU
192	O'NEIL LUMBER CO	LU
193	COASTAL MART STORE 6421	LU
194	ANGEL CARE INC	LU
195	IDNR	LU
196	MOTO INC	LU
197	SHELL, EIGHTH STREET	LU
198	CENTERVILLE TWP HWY DEPT	LU
199	E G VOGT OIL CO INC	LU
200	QUAYLES	LU
201	HOODCO INC (FORMER ILL DEPT OF	LU
202	MOBIL OIL	LU
203	AMOCO 137, ACA MANAGEMENT SVC	LU
204	FAIRVIEW HEIGHTS, CITY OF	LU
205	AMOCO OIL CO	LU
206	TRADE WASTE INCINERATION INC	LU
207	TRADE WASTE INCINERATION INC	LU
208	TRADE WASTE INCINERATION INC	LU
209	TRADE WASTE INCINERATION INC	LU
210	ETHYL PETROLEUM ADDITIVES INC	LU
211	EMPIRE CHEM REALTY INC	LU
212	EMPIRE CHEM REALTY INC	LU
213	CAHOKIA MARINE SVC	LU
214	CAHOKIA MARINE SVC	LU

215	MOBIL OIL CORP	LU
216	WASHINGTON PARK/MUNICIPAL 2	LU
217	WASHINGTON PARK/MUNICIPAL 2	LU
218	WIEMANN ICE & FUEL	LU
219	AMOCO-KINGS HIGHWAY	LU
220	CLARK OIL 1984	LU
221	COASTAL MART 5	LU
222	KELLER OIL	LU
223	AMOCO 18739	LU
224	AMOCO 18739	LU
225	OGDEN-FAIRMONT, INC	LU
226	IL BELL	LU
227	OWENS-BROCKWAY GLASS CONTAINER	CU
228	ABANDONED TOWN GAS PLANT	CU
229	FEDERAL LEAD SMELTERS	CU
230	ALTON MEMORIAL HOSPITAL	CU
231	PIASA METRO	CU
232	MCDONNELL DOUGLAS (F-18 CRASH)	CU
233	ESTATE OF DALE A. BENNER	CU
234	ILLINOIS POWER TOWN GAS PLANT	CU
235	BAST PROPERTY	CU
236	QUIKTRIP	CU
237	ILLINOIS POWER TOWN GAS PLANT	CU
238	ILLINOIS POWER TOWN GAS PLANT	CU
239	NESTLE FOODS	CU
240	CLARK OIL REFINERY	CU
241	MARATHON PETROLEUM	CU
242	KOCH PIPELINE COMPANY	CU
243	DOW-CONSOLIDATED ALUMINUM	CU
244	MARCUZZO PROPERTY	CU
245	KOCH PIPELINE COMPANY	CU
246	OWENS BROCKWAY GLASS CONTAINER	CU
247	ISAIAH WATSON	CU
248	KTRS RADIO STATION TOWER	CU
249	PANHANDLE EASTERN PIPE LINE	CU
250	RESOURCE RECOVERY	CU
251	MONSANTO LANDFILL	CU
252	ACF INDUSTRIES	CU
253	HOLIDAY INN (GSA)	CU
254	ILLINOIS POWER TOWN GAS PLANT	CU
255	ILLINOIS POWER TOWN GAS PLANT	CU
256	RIVER PARK DRIVE	CU
257	SOUTHWESTERN BELL WIRELESS	CU
258	ARKANSAS POST & POLE	CU
259	COLUMBUS ROAD HTS OWNER ASSOC.	NPDES
260	QUINCY MUNICIPAL AIRPORT	NPDES
261	CENTRAL STONE COMPANY	NPDES
262	QUINCY STP	NPDES

263	SHERIDAN ESTATES DISPOSAL	NPDES
264	LUBBERT APARTMENT	NPDES
265	PAYSON STP	NPDES
266	HULL STP	NPDES
267	NEW CANTON WWTP	NPDES
268	HARDIN WWTP	NPDES
269	BUNKER HILL STP	NPDES
270	IL DOC-PERE MARQUETTE STATE PK	NPDES
271	GRAFTON WWTP	NPDES
272	PRINCIPIA COLLEGE PLT #2	NPDES
273	GODFREY TOWNSHIP UTILITY BOARD	NPDES
274	DEERFIELD PROPERTY OWNERS ASSN	NPDES
275	ILLINOIS AMER WATER ALTON WTP	NPDES
276	JEFFERSON SMURFIT-ALTON	NPDES
277	ALTON STP	NPDES
278	EAST ALTON STP	NPDES
279	OLIN CORP-EAST ALTON	NPDES
280	LACLEDE STEEL-ALTON	NPDES
281	ILLINOIS POWER-WOOD RIVER	NPDES
282	WOOD RIVER STP	NPDES
283	SHELL OIL CO.-WOOD RIVER	NPDES
284	CLARK OIL-WOOD RIVER	NPDES
285	KOCH PIPELINES INC., HARTFORD	NPDES
286	SOUTHERN IL UNIV-EDWARDSVILLE	NPDES
287	EDWARDSVILLE STP	NPDES
288	EDWARDSVILLE ESTATES	NPDES
289	MARYVILLE WTP	NPDES
290	GRANITE CITY STP	NPDES
291	HOLIDAY MHP	NPDES
292	NATIONAL STEEL-GRANITE CITY	NPDES
293	TROY WTP	NPDES
294	COLLINSVILLE STP	NPDES
295	HARCROS PIGMENTS, INC.	NPDES
296	SAUGET-ABRTF	NPDES
297	SAUGET-P/C	NPDES
298	CASEYVILLE TWP WEST STP	NPDES
299	STOOKEY TOWNSHIP DUTCH HOLLOW	NPDES
300	DUPO WWTP	NPDES
301	COLUMBIA QUARRY CO-QUARRY 9	NPDES
302	COLUMBIA STP	NPDES
303	LOU DEL SD STP	NPDES
304	WATERLOO WWTF	NPDES
305	MAEYSTOWN WTP	NPDES
306	KASKASKIA STONE COMPANY	NPDES
307	PRAIRIE DU ROCHER STP	NPDES
308	UNION ELECTRIC CO - MERAMEC PLANT	CERCL
309	FORT DE CHARTRES STATE PARK	CERCL
310	ADAMS COUNTY QUINCY LANDFILL SITE 2&3	CERCL

311	OWENS-BROCKWAY GLASS CONTAINER INC	CERCL
312	OLIN CORP MAIN PLT	CERCL
313	OWENS ILLINOIS INC ALTON	CERCL
314	OLIN CORPORATION ZONE 17 PLANT	CERCL
315	ST LOUIS REFRIG CAR CO DOME RWY SERV DIV	CERCL
316	AMOCO OIL COMPANY REFINING	CERCL
317	AMOCO OIL COMPANY	CERCL
318	AMOCO OIL COMPANY MAIN OFFICE WWTP	CERCL
319	SHELL OIL CO WOOD RIVER REF	CERCL
320	SOUTHERN ILLINOIS UNIV-SCIENCE BLDG	CERCL
321	ILLINOIS PWR CO STALLINGS GAS TURBINE	CERCL
322	US ARMY ST LOUIS AREA SUPPORT CTR	CERCL
323	JENNSION WRIGHT CORPORATION	CERCL
324	AMERICAN STEEL	CERCL
325	GRANITE CITY STEEL	CERCL
326	AIR PRODUCTS & CHEMICAL COMPANY	CERCL
327	NL INDUSTRIES/TARACORP LEAD SMELT SITE	CERCL
328	REILLY TAR & CHEM CO	CERCL
329	CENTRAL STATES BATTERY	CERCL
330	SWIFT ADHESIVES & COATINGS	CERCL
331	SCA SERV OF IL CHAIN OF ROCKS II	CERCL
332	KERR-MCGEE CHEM CORP	CERCL
333	UNION ELECTRIC COMPANY VENICE PLANT	CERCL
334	SWIFT AG CHEM FAIRMONT CITY PLT	CERCL
335	ALLIED CORPORATION EAST ST LOUIS WORKS	CERCL
336	ST LOUIS AUTO SHREDDING INCORPORATED	CERCL
337	SCA MILAM LANDFILL	CERCL
338	PFIZER INC	CERCL
339	SHIPPERS CAR LINE	CERCL
340	MORRIS PAINTS AND VARNISH	CERCL
341	LEFTON IRON & METAL	CERCL
342	WASTEX #1 RESEARCH	CERCL
343	WASTEX RESEARCH INC	CERCL
344	SAUGET WWTP	CERCL
345	CLAYTON CHEM CO	CERCL
346	BLISS WASTE OIL	CERCL
347	TRADE WASTE INCINERATORS	CERCL
348	ETHYL CORP ETHYL PETROLEUM ADDITIVES DIVISION	CERCL
349	MONSANTO CO W G KRUMMRICH	CERCL
350	AMAX ZINC CO INC	CERCL
351	GATEWAY PETROLEUM CO INC	CERCL
352	UNITED STEEL DRUM INCORPORATED	CERCL
353	MOBIL OIL TERM	CERCL
354	STERLING STEEL FOUNDRY	CERCL
355	LANSON CHEMICAL/PUREX CORPORATION	CERCL
356	CHILDS PROPERTY	CERCL
357	SAUGET AREA I - WAGGONER TRUCKING COMAPNY	CERCL
358	YVONNE SAUGET (TRUST)	CERCL

359	QUINCY MUNICIPAL #4	LF
360	ALTON MUNICIPAL	LF
361	LADILAW WASTE SYSTEMS	LF
362	CHAIN OF ROCKS SOUTH	LF
363	MILAM LANDFILL	LF

MAP ID	FACILITY NAME	SOURCE TYPE
364	ROTHENBERG FORD MERCURY	RCRA
365	WEBER GEORGE CHEV	RCRA
366	RIVERVIEW FORD MERC	RCRA
367	MS RIVER TRANS CORP DIV NO 7 WHSE	RCRA
368	QUALITY DRYCLEANING OF COLUMBIA	RCRA
369	PHILIP ENVIRONMENTAL SVC	RCRA
370	ILDOT BRG 067 0006	RCRA
371	MONROE SERVICE CO	RCRA
372	GRANTHAM C CO	RCRA
373	PHILIP ENVIRONMENTAL SVC CORP	RCRA
374	CLEAN FUELS	RCRA
375	PRICE PRINTING INC	RCRA
376	COUNTY OF MONROE	RCRA
377	MONROE SERVICE CO	RCRA
378	ILL BELL TEL CO WATERLOO	RCRA
379	HARRISONVILLE TELEPHONE	RCRA
380	MONROE SERVICE CO	RCRA
381	VALMEYER SCHOOL DISTRICT	RCRA
382	MAR GRAPHICS	RCRA
383	AGRICO CHEMICAL CO	RCRA
384	CF INDUSTRIES HARRISONVILLE TERMINAL	RCRA
385	GRACE W R & CO	RCRA
386	MONROE SERVICE CO	RCRA
387	MAR BUSINESS FARMS CO	RCRA
388	ILL BELL TEL CO VALMEYER	RCRA
389	M H EQUIPMENT CORP	RCRA
390	MONROE SERVICE CO	RCRA
391	FT DECHARTERS STATE PARK	RCRA
392	DAVES STANDARD	RCRA
393	RANDOLPH SERVICE CO	RCRA
394	ILL BELL TEL CO FOWLER C D O	RCRA
395	SHAFFER AND SONS	RCRA
396	SPARKS AND WIEWEL CONST	RCRA
397	QUINCY PARK DISTRICT MAINT 1	RCRA
398	EDGAR COUNTY SUPPLY CO	RCRA
399	MICROENERGY INC	RCRA
400	SUNOCO SERVICE STATION	RCRA
401	MIDWEST PATTERNS INC	RCRA
402	ULRICH BOB DISPOSAL SERVICE INC	RCRA
403	IL EPA QUINCY HHW SITE	RCRA
404	QUINCY/ADAMS CNTY LANDFILL SITES 2 & 3	RCRA

405	SUNOCO SERVICE STATION	RCRA
406	D & R CABINET & MARBLE CO	RCRA
407	C AND M AUTO TRUCK SALVAGE	RCRA
408	SHERWIN-WILLIAMS CO THE	RCRA
409	CRAVEN DALE W	RCRA
410	KUESTER TOOL AND DIE INC	RCRA
411	QUINCY MUNICIPAL AIRPORT	RCRA
412	MARTIN AND KROENCKE IMP CO	RCRA
413	KUESTER TOOL AND DIE PLT 2	RCRA
414	CENTRAL STONE CO PLT 50	RCRA
415	HACO INC	RCRA
416	QUINCY WASTEWATER TREATMENT FAC	RCRA
417	JM HUBER CORP	RCRA
418	NOR AM CHEMICAL CO	RCRA
419	FOAM PRODUCTS TUSCARORA PLASTIC	RCRA
420	COUNTER TOP PROCESSING INC	RCRA
421	NORTHEAST MISSOURI ELECTRIC POWER COOP	RCRA
422	AMERICAN CYANAMID CO-HANNIBAL PLANT	RCRA
423	P AND S AUTO AND TRUCK REPAIR	RCRA
424	HULL IMP INC	RCRA
425	PIKE COUNTY SVC CO	RCRA
426	PIKE COUNTY SERVICE CO	RCRA
427	SNY ISLAND LEVEE DRAINAGE DIST	RCRA
428	PIKE COUNTY SERVICE CO	RCRA
429	WATERS COLLISION CENTER	RCRA
430	PANHANDLE EASTERN	RCRA
431	PLEASANT HILL COMMUNITY UNIT	RCRA
432	JERSEY COUNTY FARM SUPPLY CO	RCRA
433	AT&T LONG LINES NEWBERN IL	RCRA
434	GHERE TUB AND SONS AUTO BODY	RCRA
435	BRUCKERTS CHEVROLET INC	RCRA
436	MACOUPIN SERVICE CO	RCRA
437	BRIGHTON LANDFILL	RCRA
438	ORKIN PEST CONTROL INC	RCRA
439	ILL BELL TEL	RCRA
440	MEAD PACKAGING	RCRA
441	CASEYS GENERAL STORE	RCRA
442	LEWIS AND CLARK AUTO AND DIESEL	RCRA
443	OWENS BROCKWAY GLASS CONTAINER INC	RCRA
444	INTERNATIONAL MILL SERVICE INC	RCRA
445	MUNGENAST DAVE ALTON TOYOTA DODGE	RCRA
446	SPECIALTY SERVICES INC	RCRA
447	QUALITY PONTIAC INC	RCRA
448	PIASA MOTOR FUELS INC	RCRA
449	ILDOT BRG 060 0187 AND 060 0190	RCRA
450	US ARMY COE LOCK 26	RCRA
451	ST ANTHONY HOSPITAL	RCRA
452	NORFOLK AND WESTERN RAILWAY CO	RCRA

453	ILL BELL TEL CO GODFREY-ALTON C O	RCRA
454	GODFREY SHELL	RCRA
455	HANLEY INDUSTRIES INC	RCRA
456	JOUETTS AMOCO	RCRA
457	QUIKTRIP STORE 698	RCRA
458	ROBERTS MOTORS INC	RCRA
459	STORK JOE CLEANERS	RCRA
460	EASY WASH LAUNDRY AND CLEANERS	RCRA
461	UNION ELECTRIC CO ALTON COMPLEX	RCRA
462	MOORE PAINTING CO	RCRA
463	COULSON BARKER OLDS CAD GMC	RCRA
464	SPECIALTY WASTE SVC INC	RCRA
465	IL CENTRAL MGMT SERV DEPT OF VEHICLES	RCRA
466	WOODRIVER USD AUTO PARTS	RCRA
467	B AND R AUTO BODY	RCRA
468	ILL BELL TEL CO ALTON COLLEGE C O	RCRA
469	CASEYS GENERAL STORES	RCRA
470	BETHALTO VILLAGE OF WATER TANK	RCRA
471	EMRO MARKETING NO 5386	RCRA
472	TOLLIN MARINE SPILL	RCRA
473	SOUTHERN ILL UNIV DENTAL MEDICINE SCHOOL	RCRA
474	HAROLD HART AMOCO	RCRA
475	CLARK OIL STATION 1554	RCRA
476	DUGAN TOOL AND DIE INC	RCRA
477	BETHALTO AMOCO	RCRA
478	JR DRY CLEANERS	RCRA
479	ALTON MEMORIAL HOSPITAL	RCRA
480	KINDER SERVICE	RCRA
481	CENTRAL AUTO BODY	RCRA
482	RADAR METALS	RCRA
483	ACT AUTO BODY	RCRA
484	SPENCER AUTO BODY INC	RCRA
485	ILL BELL TEL CO	RCRA
486	DUNCAN FOUNDRY & MACHINE WORKS INC	RCRA
487	LACLEDE STEEL CO ALTON WORKS	RCRA
488	MID AMERICA RESOURCES	RCRA
489	ABBOTT MACHINE CO	RCRA
490	MOORE PAINTING CO	RCRA
491	ST JOSEPHS HOSPITAL	RCRA
492	CONAGRA INC	RCRA
493	TELEGRAPH	RCRA
494	BLASKE MARINE INC	RCRA
495	HELLRUNG CONSTRUCTION CO	RCRA
496	ST LOUIS REGIONAL AIRPORT	RCRA
497	LANGA AIR INC	RCRA
498	PREMIER AIR CENTER	RCRA
499	RONS AUTO BODY	RCRA
500	BERGER WALLY BUICK INC	RCRA

501	RIVER AND RAIL SERVICES INC	RCRA
502	RESTORATION HOUSE AUTO BODY	RCRA
503	SGS CONTROL SERVICE	RCRA
504	OWENS ILLINOIS GLASS CONTAINERS INC	RCRA
505	OWENS BROCKWAY GLASS CONTAINER	RCRA
506	ILLINOIS POWER CO RIVER BEND	RCRA
507	QUALITY PONTIAC INC	RCRA
508	DYNAMIC HYDRA-BLASTING INC	RCRA
509	MOORE PAINTING CO	RCRA
510	ILLINOIS POWER CO WOOD RIVER PWR STA	RCRA
511	AIRLINE STANDARD	RCRA
512	ILL BELL TEL CO	RCRA
513	ROC GASES	RCRA
514	MARINE SYSTEMS INC	RCRA
515	ANDYS AUTO BODY OF ALTON INC	RCRA
516	VILLAGE CLEANERS	RCRA
517	SIMPSON AUTO REPAIR	RCRA
518	EAST ALTON CLEANERS	RCRA
519	OLIN CORP	RCRA
520	ODESCO INDUSTRIAL SERVICES INC	RCRA
521	SGS CONTROL SVCS INC	RCRA
522	INSPECTORATE AMERICA	RCRA
523	JEFFERSON SMURFIT CO	RCRA
524	BEALL MFG INC	RCRA
525	CLARKS BOAT AND MOTOR	RCRA
526	SOUTHLAND CORP 7 11 STORE 20223	RCRA
527	MIDWEST AUTO	RCRA
528	AZCON SCRAP CORP	RCRA
529	FEDERAL STEEL	RCRA
530	DEGERLIA GENERAL HAULING & EXC., INC	RCRA
531	WOOD RIVER PRODUCTS TERMINAL	RCRA
532	BENNER DALE ESTATE OF	RCRA
533	KILNGAS	RCRA
534	WOOD RIVER TOWNSHIP HOSPITAL	RCRA
535	US ARMY RESERVE CTR	RCRA
536	AEL INDUSTRIES INC AERO DIV	RCRA
537	WAL MART STORES INC	RCRA
538	WOOD RIVER FORD	RCRA
539	ALBRECHT HAMLIN CHEVROLET INC	RCRA
540	COMET CLEANERS	RCRA
541	WOOD RIVER FORD	RCRA
542	DOMERAILWAY SVCS	RCRA
543	WERTS WELDING SERVICE	RCRA
544	BRIGHTON PAINTING COMPANY	RCRA
545	EVCO NATIONAL INC	RCRA
546	MIDWEST SANITARY SERVICE INC	RCRA
547	RYDER TRUCK RENTAL	RCRA
548	HAPPY AUTO PARTS	RCRA

549	ILLINOIS POWER CO WOOD RIVER DIST OFF	RCRA
550	A J AMOCO	RCRA
551	C AND F AMOCO	RCRA
552	MACS AUTO BODY	RCRA
553	KIENSTRA INC	RCRA
554	AMOCO OIL CO LIGHT OILS DISTRIBUTION	RCRA
555	AMOCO PETROLEUM ADDITIVES CO	RCRA
556	AMOCO OIL CO WOOD RIVER REFINERY	RCRA
557	AMOCO WOOD RIVER MOTOR VEHICLE FLEET	RCRA
558	AMOCO WOOD RIVER TERMINAL	RCRA
559	SCOTT CHARLES H & ASST INC	RCRA
560	SCOTT CHARLES H & ASST INC	RCRA
561	HELMKAMP CONSTRUCTION CO	RCRA
562	UNION CARBIDE INDUSTRIAL GASES INC	RCRA
563	AMOCO RIVERFRONT PROPERTY	RCRA
564	FEDERATED METALS CORP	RCRA
565	ECONOMY BOAT STORE	RCRA
566	AMOCO OIL CO WOOD RIVER REFINERY	RCRA
567	LOUISIANA DOCK CO INC	RCRA
568	IL EPA WOOD RIVER HHW SITE	RCRA
569	MARATHON ASHLAND PIPE LINE LLC	RCRA
570	KOCH NITROGEN	RCRA
571	WOOD RIVER REGIONAL WWTF	RCRA
572	SHELL PIPELINE CORP PIPELINE TERMINAL	RCRA
573	MIKES INC	RCRA
574	AMOCO OIL CO RIVERFRONT	RCRA
575	CLARK OIL & REFINING CORP	RCRA
576	WOOD RIVER REFINING CO	RCRA
577	SAYBOLT CORP	RCRA
578	TRIAD INDUSTRIES INC	RCRA
579	STAHLY CARTAGE CO	RCRA
580	CASEYS GENERAL STORES	RCRA
581	BARTON DON TRUCKING & EXCAVATING INC	RCRA
582	CBW TRANSPORT SERVICE INC	RCRA
583	GROWMARK INC	RCRA
584	LIDLAW WASTE SYSTEMS	RCRA
585	CENTER TERMINAL CO	RCRA
586	HARTFORD ELEMENTARY SCHOOL	RCRA
587	AMERICAN REFINING GROUP INC	RCRA
588	CLARK OIL AND REFINING CORP WOOD RIVER	RCRA
589	DAWSON MARINE ELECTRIC	RCRA
590	SCNO BARGE LINES	RCRA
591	SAFETY KLEEN	RCRA
592	SCHIBER TRUCK CO	RCRA
593	EXPLORER PIPELINE CO	RCRA
594	NATIONAL GF CORP	RCRA
595	NICOR NATIONAL	RCRA
596	ILDOT BRG 060 0158	RCRA

597	ILDOT BRG 060 0160	RCRA
598	ILDOT BRG 060 0140 AND 060 0141	RCRA
599	ILDOT BRG 060 0051 & 060 0052	RCRA
600	ILDOT BRG 082 0191 AND 082 0192	RCRA
601	IL EPA EDWARDSVILLE HHW SITE	RCRA
602	MECHANICS PLANING MILL	RCRA
603	PROPELLEX CORP	RCRA
604	ILDOT BRG 060 0055 & 060 0056	RCRA
605	FOUR FLAGS MOTORS INC	RCRA
606	CAULKS AUTO BODY	RCRA
607	WAL MART STORES INC	RCRA
608	LIDLAW WASTE SYSTEMS INC	RCRA
609	MINDRUP LAWN	RCRA
610	WAYNES PROFESSIONAL DRYCLEANER	RCRA
611	MADISON COUNTY TRANSIT	RCRA
612	HOLIDAY ONE HOUR CLEANERS	RCRA
613	ALS AUTO BODY	RCRA
614	EDWARDSVILLE INTELLIGENCER	RCRA
615	ERNSTS AMOCO	RCRA
616	NATIONAL SUPERMARKETS INC	RCRA
617	HOMAN AUTO BODY INC	RCRA
618	SCHMIDT JACK FORD OF EDWARDVILLE	RCRA
619	JOUETTS QUICK SIX INC	RCRA
620	EDWARDSVILLE SCHOOL DIST	RCRA
621	MADISON SERVICE CO	RCRA
622	SOUTHERN ILLINOIS UNIVERSITY SCIENCE BLD	RCRA
623	SOUTHERN ILLINOIS UNIV PHYSICAL PLT	RCRA
624	SOUTHERN ILL UNIV PHYSICAL PLT	RCRA
625	BURIANS SOUTHSIDE AUTO INC	RCRA
626	CHEMETCO INC	RCRA
627	3D REPAIR	RCRA
628	MAGNA BANK OF ILLINOIS	RCRA
629	LANDWEHRMEIER MYRTLE	RCRA
630	ALLWASTE CONTAINER SERVICES INC	RCRA
631	WASTE MANAGEMENT PRECISION SERVICES INC	RCRA
632	ERB EQUIPMENT CO OF IL INC	RCRA
633	JOUETTS AMOCO FOOD SHOP	RCRA
634	LE STABLE INC	RCRA
635	EDWARDSVILLE BARGAIN CENTER INC	RCRA
636	ILLINOIS RADIATOR AND BODY SHOP	RCRA
637	BEYER AUTO BODY	RCRA
638	PRECOAT METALS	RCRA
639	HEIDTMAN STEEL PRODUCTS INC	RCRA
640	KOETTING FORD INC	RCRA
641	AMOCO OIL CO SS 18792	RCRA
642	MOBIL SVC STATION 05 FHB	RCRA
643	GENES AUTO BODY AND SALES	RCRA
644	AMERICAN CLEANERS	RCRA

645	OIL TECHNOLOGY INC	RCRA
646	ILDOT	RCRA
647	BEST OFFER	RCRA
648	ILLINOIS POWER CO STALLINGS	RCRA
649	SUNOCO SERVICE STATION	RCRA
650	QUIKTRIP STORE 688	RCRA
651	STEIN STEEL MILL	RCRA
652	ILLINOIS POWER CO GRANITE CITY STA B	RCRA
653	DOOLEY AUTO BODY	RCRA
654	ABELS AUTO BODY	RCRA
655	CHAIN OF ROCKS RECYCLING DISPOSAL FAC	RCRA
656	GRANITE CITY TERMINALS CORP	RCRA
657	DEMPSEY ADAMS AUTO BODY	RCRA
658	ILDOT BRG 060 0035	RCRA
659	US EPA NEIC ST LOUIS SUPPORT CTR	RCRA
660	WAITERS METAL FABRICATION	RCRA
661	BRUCE TRUCKING AND EXCAVATING INC	RCRA
662	SUPERIOR CUSTOM MARBLE LTD	RCRA
663	ILL BELL TEL	RCRA
664	MARYVILLE HHW COLLECTION	RCRA
665	ILL BELL TEL CO	RCRA
666	ILL BELL TEL CO	RCRA
667	PEYLA AUTO BODY	RCRA
668	ILLINOIS POWER CO	RCRA
669	KURTS AUTO BODY	RCRA
670	ANDERSON HOSPITAL	RCRA
671	KAMADULSKI EXCAVATING & GRADING CO INC	RCRA
672	TOWER AUTOMOTIVE PROD CO INC	RCRA
673	VILLAGE SHOPPING CENTER	RCRA
674	21ST CENTURY ENV MAN INC OF ILLINOIS	RCRA
675	CAPRI SUN INC	RCRA
676	TRI ME TRANS	RCRA
677	TRANSFORMIT	RCRA
678	MOBIL OIL CORP SS FJW	RCRA
679	MARTIN CHAS INSPECTION & CONTROL INC	RCRA
680	CLARK OIL STATION NO 1268	RCRA
681	TODD CORP	RCRA
682	ALL HYDRAULIC SEREVICE	RCRA
683	SUNOCO SERVICE STATION	RCRA
684	AERO AVIATION	RCRA
685	COLLINSVILLE AUTO BODY	RCRA
686	LAURA BUICK PONTIAC GMC INC	RCRA
687	CLEAN CRAFT CLEANERS	RCRA
688	STREET DEPARTMENT GRANITE CITY	RCRA
689	JENNISON-WRIGHT CORP THE	RCRA
690	WOLFE M H AND CO	RCRA
691	ILLINOIS POWER CO	RCRA
692	IMC FERTILIZER INC	RCRA

693	FERALLOY CORP	RCRA
694	NESTLE FOODS CORP	RCRA
695	SONNY PAST AUTO BODY	RCRA
696	SCA SERVICES OF IL MILAM EAST HAULING	RCRA
697	ALRIGHT CLEANERS	RCRA
698	OFFICE FOR CATHOLIC CHARTIES	RCRA
699	LURIA BROTHERS	RCRA
700	QUIKTRIP STORE 697	RCRA
701	AMERICAN STEEL FOUNDRIES	RCRA
702	AFFILIATED METALS CO	RCRA
703	NOVOTNY JOHN CHEVROLET INC	RCRA
704	HOLLOWAY MFG CORP	RCRA
705	BENTON DEUMMING CORP	RCRA
706	NATIONAL STEEL CORP GRANITE CITY DIV	RCRA
707	AIR PRODUCTS AND CHEMICALS INC	RCRA
708	TERMINAL RAILROAD ASSN OF ST LOUIS	RCRA
709	GRANITE CITY ONE HOUR CLEANERS	RCRA
710	CLARK OIL STATION NO 271	RCRA
711	METALICO GRANITE CITY INC	RCRA
712	TARACORP CLEANUP NL IND SF SITE GRP	RCRA
713	AMOCO ACA MGMT 105	RCRA
714	FORMER WOODROME OLDSMOBILE	RCRA
715	SNELSON COLLISION CENTER	RCRA
716	DEMPSEY ADAMS INC	RCRA
717	MADISON AVENUE SONIC	RCRA
718	ST LOUIS LEAD RECYCLERS	RCRA
719	CAPRI SUN INC	RCRA
720	MICHIGAN METAL PROCESSING CORP	RCRA
721	GRANITE CITY PICKLING & WAREHOUSING INC	RCRA
722	REILLY INDUSTRIES INC	RCRA
723	AMOCO ACA MGMT 139	RCRA
724	AMERICAN CLEANERS	RCRA
725	IL EPA RPMS CENTRAL STS	RCRA
726	VEST EXCAVATING	RCRA
727	CROFT DAVE MOTORS INC	RCRA
728	ILDOT BRG 082 0266	RCRA
729	ILDOT BRG 060 0144	RCRA
730	ILDOT BRG 060 0145	RCRA
731	G AND G CAR WASH	RCRA
732	ILLINOIS BUREAU OF MATERIALS	RCRA
733	DIAMOND PLATING	RCRA
734	GARYS AUTO BODY	RCRA
735	ILDOT	RCRA
736	BARNHART TRUCKING	RCRA
737	EVER GREEN LAWNS	RCRA
738	QUIKTRIP STORE 691	RCRA
739	GOLD PLATED	RCRA
740	MADISON METAL SVC INC	RCRA

741	CALLIER STEEL PIPE AND TUBE INC	RCRA
742	LOCK 26 CONSTRUCTION	RCRA
743	SWIFT ADHESIVES AND COATINGS	RCRA
744	AMEDCO STEEL CO	RCRA
745	MOBIL OIL CORP MITCHELL TERMINAL	RCRA
746	CHESTER BROADCASTING CORP	RCRA
747	SPECTRULITE CONSORTIUM INC	RCRA
748	CONSOLIDATED ALUMINUM CORP	RCRA
749	CLAYTON CHEMICAL CO TRACK 74	RCRA
750	SCA SERVICES OF IL CHAIN OF ROCKS II	RCRA
751	KERR MCGEE CHEMICAL CORP	RCRA
752	FRESH INC	RCRA
753	MIDWESTERN DRUM SERVICE INC	RCRA
754	ORR THELMA	RCRA
755	RANDYS TRAILOR TOWN	RCRA
756	SCHMITT JACK OLDS CADILLAC	RCRA
757	GATEWAY INDUSTRIAL POWER INC	RCRA
758	ILL BELL TEL CO COLLINSVILLE C O	RCRA
759	AT AND T LONG LINES COLLINSVILLE	RCRA
760	UNION ELECTRIC CO VENICE PLT	RCRA
761	ILLINOIS CENTRAL GULF RAILROAD CO	RCRA
762	DALTON AUTO BODY	RCRA
763	AMOCO ACA MGMT 106	RCRA
764	FS BUILDING	RCRA
765	BECKER AUTOMOTIVE INC	RCRA
766	CLARK OIL STATION NO 1019	RCRA
767	G AND GAUTO REBUILDERS	RCRA
768	TERMINAL RAILROAD ASSOCIATION	RCRA
769	TERMINAL RAILROAD ASSOCIATION	RCRA
770	LEVY SIGN CO	RCRA
771	XTRA INC	RCRA
772	STANDARD AUTO BODY	RCRA
773	DAVID HAULING CO	RCRA
774	GARCIA B TRUCKING CO	RCRA
775	ESTECH GENERAL CHEMICAL CORP	RCRA
776	GENERAL CHEMICAL CORP	RCRA
777	CONRAIL ROSE LAKE ENGINE HOUSE	RCRA
778	FRUEHAUF TRAILER CORP	RCRA
779	TANK TRAILER CLEANING INC	RCRA
780	ST LOUIS NATIONAL STOCKYARDS	RCRA
781	NSY WAREHOUSE	RCRA
782	CADBURY BEVERAGES	RCRA
783	ST LOUIS AUTO SHREDDING	RCRA
784	DARLING INTERNAL	RCRA
785	EVANS PRODUCTS CO	RCRA
786	VANDALIA BUS LINES INC	RCRA
787	ROHO MFG CO	RCRA
788	L AND H SERVICES	RCRA

789	SCHILLI TRANSFER AND STORAGE INC	RCRA
790	ILDOT BRG 082 0008 AND 82 0009 FAI	RCRA
791	BIG RIVER ZINC CORP	RCRA
792	BROCKLAND BOB PONTIAC GMC INC	RCRA
793	ILDOT BRG 082 0006 AND 82 0007 FAO	RCRA
794	AMERICAN BOTTOMS REGIONAL WW TRMNT ASSOC	RCRA
795	B AUTO PARTS	RCRA
796	TERMINAL RAILROAD ASSOCIATION	RCRA
797	ROSE LAKE YD ENGINE HOUSE	RCRA
798	ILL DEPT OF TRANS BRIDGE	RCRA
799	SCA SERVICES OF IL MILAM LANDFILL	RCRA
800	PETROLEUM FUEL AND TERMINAL CO	RCRA
801	MILAM RECYCLING AND DISPOSAL	RCRA
802	BLACK LANE AUTO REPAIR	RCRA
803	EE JAY MOTOR TRANSPORTS INC	RCRA
804	UNION ELECTRIC CO E ST LOUIS	RCRA
805	GATEWAY INDUSTRIES POWER INC	RCRA
806	SAFETY KLEEN CORP 5 160 02	RCRA
807	POETTKER CONSTRUCTION CO	RCRA
808	ILDOT BRG 082 0160	RCRA
809	TERMINAL RAILROAD ASSOCIATION	RCRA
810	PFIZER INC MPM DIV	RCRA
811	TERMINAL RAILROAD ASSOCIATION	RCRA
812	TERMINAL RAILROAD ASSOCIATION	RCRA
813	METRO EAST SANITARY DIST N	RCRA
814	BRAUN AUTOMOTIVE	RCRA
815	KINGS HWY AMOCO	RCRA
816	NATIONAL AUTO SUPPLY CO	RCRA
817	LOISEL CLEANERS	RCRA
818	ILLINOIS BELL TEL	RCRA
819	TOWN AND COUNTRY CLEANERS	RCRA
820	ROGERS CARTAGE CO	RCRA
821	LAROCHE INDUSTRIES INC	RCRA
822	TRANS TRUCK INC	RCRA
823	STATE COMMUNITY COLLEGE	RCRA
824	COLUMBIA CLEANERS	RCRA
825	ACF INDUSTRIES SHIPPERS CAR LINE DIV	RCRA
826	ROBINS SOLVENTS	RCRA
827	EAST ST LOUIS HOUSING AUTHORITY	RCRA
828	HAYDEN WRECKING CORP	RCRA
829	EAST SIDE HEALTH DISTRICT	RCRA
830	IL BELL TEL	RCRA
831	BI STATE DEVELOPMENT AGENCY	RCRA
832	EAST ST LOUIS HOUSING AUTH	RCRA
833	LOCKE STOVE CO	RCRA
834	IL STATE OF ARNG E ST LOUIS ARM 0MS18	RCRA
835	IL EPA MORRIS PAINT AND VARNISH	RCRA
836	UNI FAB INC	RCRA

837	BI STATE DEVELOPMENT	RCRA
838	SERVISCO MIDWEST UNIFORM RENTAL DIV	RCRA
839	AMOCO ACA MGMT 110	RCRA
840	COLLIER J H INC	RCRA
841	ILLINOIS STATE POLICE	RCRA
842	AUTOMOTIVE PROFESSIONAL SVC	RCRA
843	SUNOCO SERVICE STATION	RCRA
844	ILL BELL TEL CO	RCRA
845	MOBIL OIL CORP SS ERN	RCRA
846	AMOCO	RCRA
847	SUNOCO SERVICE STATION	RCRA
848	WASTEX RESEARCH INC	RCRA
849	ADM TRUCKING CO	RCRA
850	ILLINOIS POWER CO	RCRA
851	US ARMY RESERVE CTR	RCRA
852	MUSICK PLATING CO	RCRA
853	STATE STREET AUTO BODY	RCRA
854	NEW YORK CLEANERS	RCRA
855	SUNOCO SERVICE STATION	RCRA
856	AKZO COATINGS AMERICA INC LANCHEM DIV	RCRA
857	CAHOKIA MARINE SVCS	RCRA
858	ILDOT BRG 082 0001 AND 082 0002	RCRA
859	WASTEX RESEARCH INC	RCRA
860	ILDOT FAI RT 64	RCRA
861	SAUGET WASTEWATER TRMT PLT	RCRA
862	A 1 OIL CORP	RCRA
863	CLAYTON CHEMICAL CO	RCRA
864	TWI TRANSPORTATION INC	RCRA
865	CLARK OIL STATION 485	RCRA
866	ETHYL PETROLEUM ADDITIVES INC	RCRA
867	FIVE STAR FABRICATIONS	RCRA
868	ALTON AND SOUTHERN RAILWAY CO	RCRA
869	SOUTHERN PACIFIC TRANSPORTATION CO	RCRA
870	GATEWAY PETROLEUM CO INC	RCRA
871	METRO ST LOUIS DRUM SVC INC	RCRA
872	METRO EAST INDUSTRIES INC	RCRA
873	GATEWAY WESTERN RAILWAY	RCRA
874	MOBIL OIL CORP SAUGET TERMINAL	RCRA
875	TURNER ELECTRIC CORP	RCRA
876	IL DEPT OF TRANSPORTATION	RCRA
877	40 MINUTE CLEANERS	RCRA
878	MARKLE JAMES E AND ASSOC INC	RCRA
879	MID AMERICA ALCOHOL PRODUCERS INC	RCRA
880	MOBIL OIL CORP SS H0X	RCRA
881	SOLUTIA INC WGK PLANT	RCRA
882	MONSANTO CO WG KRUMMRICH	RCRA
883	CSX RAIL TRANSPORT	RCRA
884	SUNOCO SERVICE STATION	RCRA

885	UNIVERSAL AIR FILTER	RCRA
886	AMERICAN CLEANERS	RCRA
887	IL CENTRAL MGMT SERV DEPT OF VEHICLES	RCRA
888	GR GROUP INC	RCRA
889	SIMONS ROBERT	RCRA
890	SEASONS LIMITED	RCRA
891	CHEMTECH INDUSTRIES INC	RCRA
892	SEASONS LIMITED	RCRA
893	HOLTEN FRANK STATE PARK	RCRA
894	SAFARIAN CLEANERS	RCRA
895	INDUSTRIAL TRACK	RCRA
896	FAIRVIEW CUSTOM & COLLISION	RCRA
897	WIESE PLANNING AND ENGINEERING	RCRA
898	HOOVER HANES RUBBER CORP	RCRA
899	MIDWEST RUBBER RECLAIMING CO	RCRA
900	SUNOCO SERVICE STATION	RCRA
901	PHILLIPS PIPE LINE CO E ST LOUIS TERM	RCRA
902	TPC INDUSTRIAL SERVICES	RCRA
903	GENEX	RCRA
904	ELDER CADILLAC INC	RCRA
905	FIDELITY FINANCIAL SVC	RCRA
906	LINCOLN TRAIL AUTO BODY	RCRA
907	EADS TRUCKING CO INC	RCRA
908	BELLEVILLE AREA COLLEGE	RCRA
909	AVTEC INC	RCRA
910	CAHOKIA CLEANERS	RCRA
911	OXENDINE AUTO BODY INC	RCRA
912	QUALITY TRANSMISSION	RCRA
913	AVTEC INC HANGAR 2	RCRA
914	JOPLIN SANITATION INC	RCRA
915	WARECO SERV STA #974	RCRA
916	WARECO SERVICE STA NO 974	RCRA
917	CAHOKIA SCHOOL DISTRICT	RCRA
918	GOODYEAR AUTO SERVICE CENTER	RCRA
919	METRO E SANITARY DIST S	RCRA
920	MIDCOAST AVIATION INC	RCRA
921	PARKS COLLEGE OF ST LOUIS UNIV	RCRA
922	PARKS COLLEGE HANGAR 8	RCRA
923	SOHIO PIPE LINE CO CENTERVILLE	RCRA
924	MOTO MART	RCRA
925	MIDCOAST AVIATION TECH SUPPORT	RCRA
926	TISHS SVC INC	RCRA
927	SPRAGUE TRUCK SERVICE	RCRA
928	K MART	RCRA
929	ALS AUTOMOTIVE SUPPLY	RCRA
930	AMOCO ACA MGMT 131	RCRA
931	BRIDGEDALE CLEANERS	RCRA
932	MIDWEST WASTE INDUSTRIAL INC	RCRA

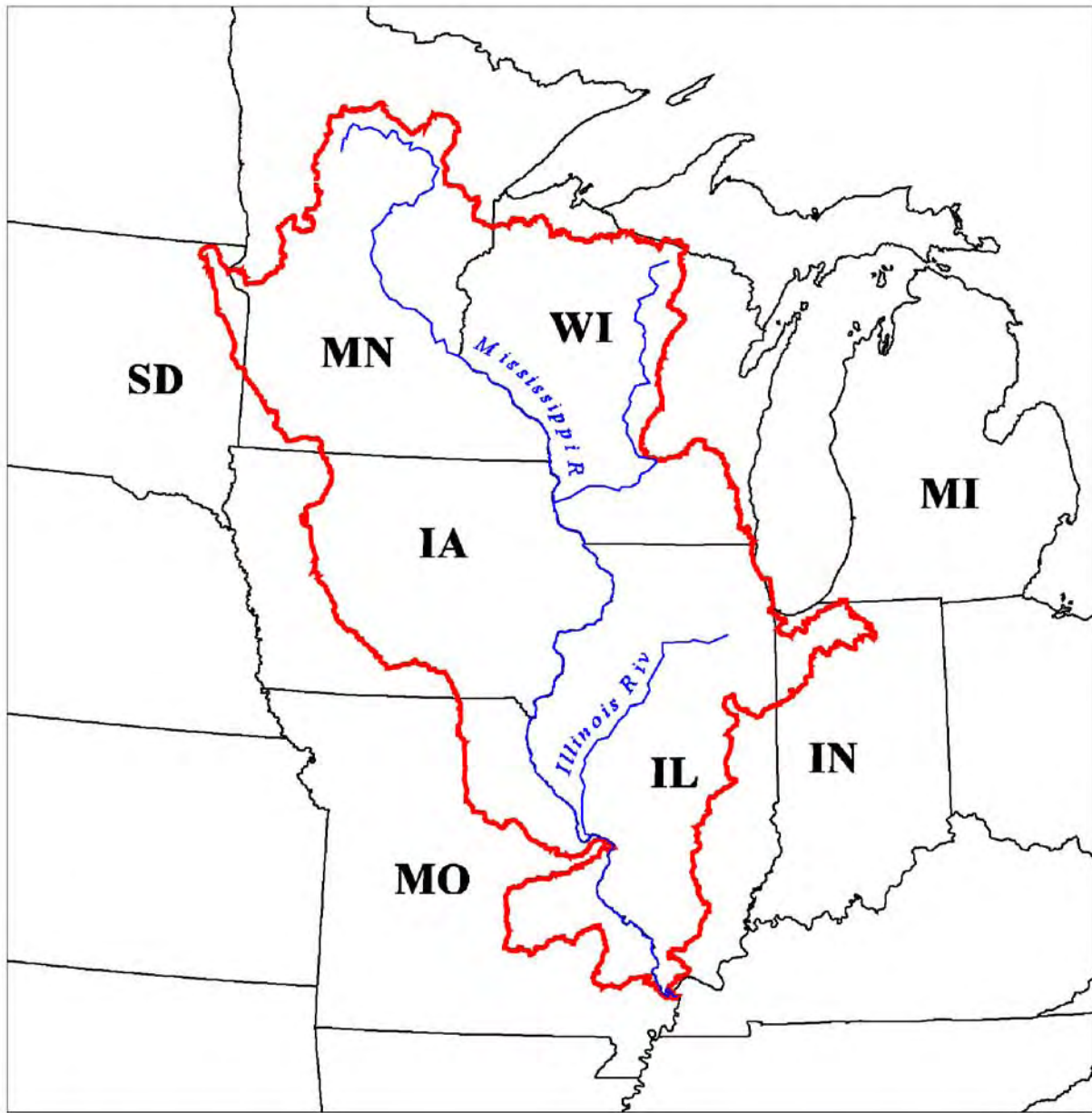
933	BOBS BODY SHOP AND SALES	RCRA
934	IHS TRANSPORT INC	RCRA
935	MARTYS USED CAR TRUCK PARTS INC	RCRA
936	BELLEVUE MEMORIAL HOSPITAL	RCRA
937	DUPO STATION PHILLIPS PIPELINE	RCRA
938	CABINET RECYCLERS INC	RCRA
939	KEMPEN PAINT CO	RCRA
940	JOHNSON CHARLES	RCRA
941	RIVERWAY HARBOR SVC	RCRA
942	UNION PACIFIC RR	RCRA
943	DOYLE EQUIPMENT MANUFACTURING CO., INC	TRI
944	QUINCY SOYBEAN COMPANY	TRI
945	PRINCE MANUFACTURING COMPANY, INC.	TRI
946	J.M. HUBER CORPORATION, CALCIUM CARBONATE DIV.	TRI
947	DYNO NOBEL INC.	TRI
948	MEAD PACKAGING	TRI
949	CONAGRA INC.	TRI
950	OLIN CORP	TRI
951	LACLEDE STEEL COMPANY	TRI
952	OLIN CORPORATION	TRI
953	AMOCO PETROLEUM ADDITIVES CO.	TRI
954	SHELL OIL COMPANY	TRI
955	CHEMETCO, INC.	TRI
956	PRECOAT METALS	TRI
957	NESTLE BEVERAGE COMPANY	TRI
958	AMERICAN STEEL FOUNDRIES	TRI
959	AIR PRODUCTS MFG. CORP. (GRANITE CITY, IL FACILITY)	TRI
960	NESCO STEEL BARREL	TRI
961	GRANITE CITY STEEL	TRI
962	TARACORP INDUSTRIES, INC.	TRI
963	REILLY INDUSTRIES, INC.	TRI
964	DIAMOND PLATING COMPANY, INC.	TRI
965	SPECTRULITE CONSORTIUM, INC.	TRI
966	KERR-MCGEE CHEMICAL CORPORATION	TRI
967	MUSICK PLATING, INC.	TRI
968	GENERAL CHEMICAL CORP. - EAST ST. LOUIS WORKS	TRI
969	HARCROS PIGMENTS INC.	TRI
970	CONTINENTAL GRAIN COMPANY, INC - WAYNE FEED DIV	TRI
971	AKZO NOBEL RESINS	TRI
972	BIG RIVER ZINC CORPORATION	TRI
973	ETHYL PETROLEUM ADDITIVES, INC.	TRI
974	CERRO COPPER PRODUCTS CO.	TRI
975	OCCIDENTAL CHEMICAL COMPANY - SAUGET PLANT	TRI
976	MONSANTO COMPANY	TRI
977	CHEMTECH PRODUCTS, INC.	TRI
978	TURNER ELECTRIC CORPORATION	TRI
979	KEMPEN PAINT CO.	TRI
980	VERTEX CHEMICAL CORPORATION	TRI

SOURCES OF INFORMATION: Data and information used in the maps supplied with this factsheet were obtained from the following sources:



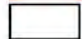
- Transportation, Rivers, County Boundary, Land Cover, IEPA modified intakes and watersheds, and Wildlife Density data from Illinois DNR
- CERCLA and RCRA sites from U. S. Environmental Protection Agency's Envirofacts Database
- Herbicide and Nitrogen Usage from U. S. Geological Survey
- Livestock Densities from U. S. Department of Agriculture
- TRI, NPDES, LUST Sites, Cleanups, Landfills, and Wells provided by Illinois EPA⁴

⁴ Locations of potential sources are approximate and intended for watershed based inventories only, not for site specific evaluations.

Figure 1: Upper Mississippi River Watershed



Legend

-  Major Rivers
-  Watershed Boundary
-  State Boundary

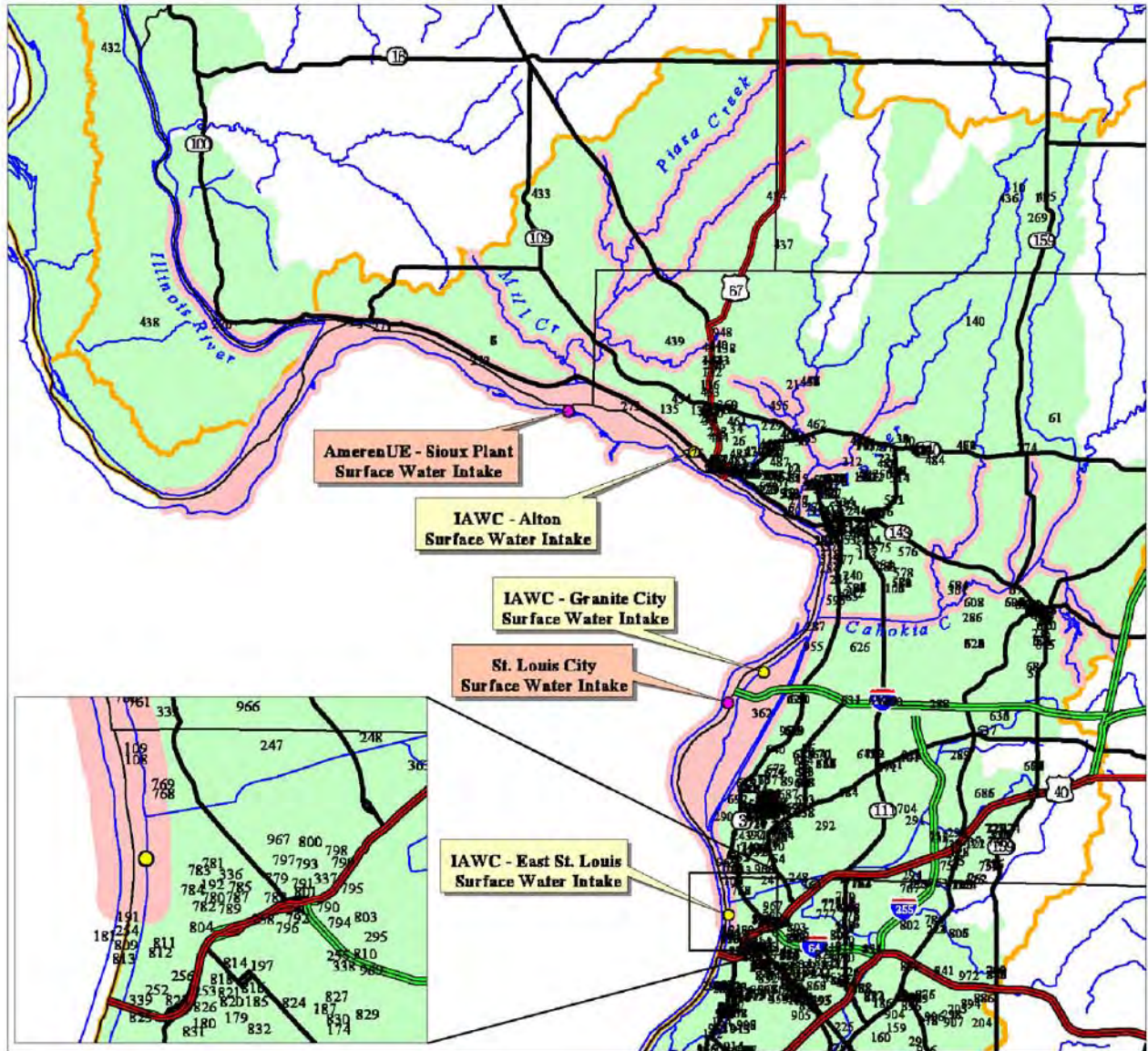
Source Information
Watershed Boundary from USEPA.

50 0 50 100 Miles



Illinois EPA

Figure 2: IAWC East St. Louis Source Water - Mississippi River



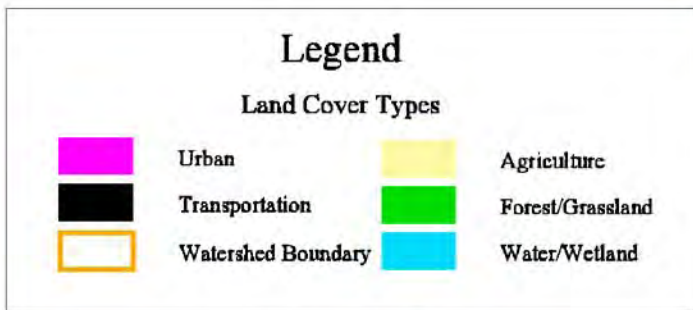
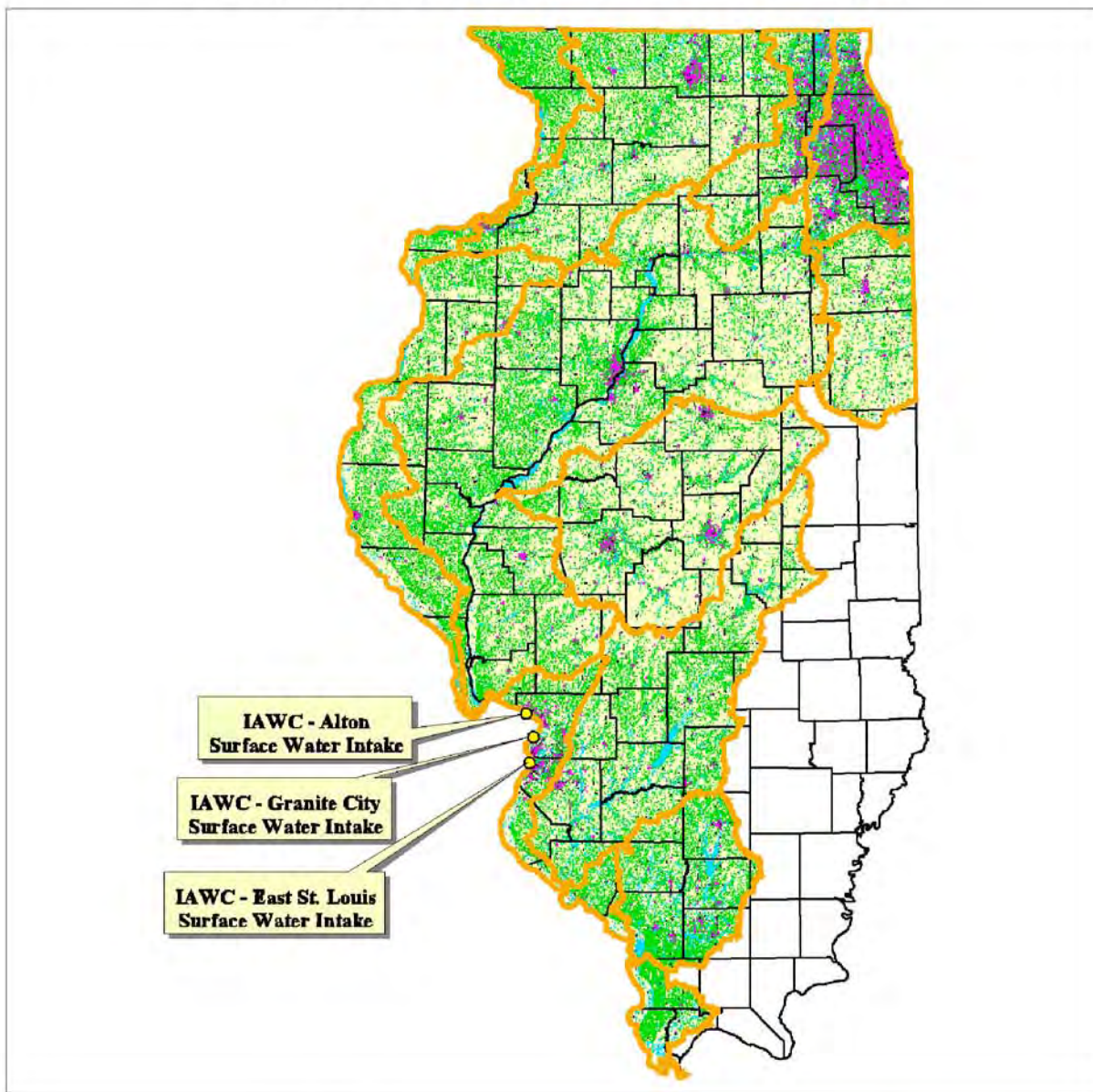
Legend

- Interstate Highway
- US Highway
- State Route
- Zone 1 Buffer - .25 miles from the River/Stream Bank and 1st order reach file stream up to the 5 hour time of travel/25 miles
- Zone 2 Buffer - 14 Digit HUC adjoining Zone 1 up to 2.5 miles below the next upstream surface water intake
- Zone 3 Buffer - 8 digit HUC for the river/stream
- Major Streams
- Active Illinois PWS Surface Water Intake
- Active Missouri PWS Surface Water Intake
- 2 Potential Source Of Contamination



Source Information
 CERCLA and RCRA sites obtained from USEPA.
 TRI, NPDES, LUST, Cleanups, and Landfills from IEPA.

Figure 3: Illinois Portion Of The Upper Mississippi River Watershed Land Cover



Land Cover	Acres	Percent
Urban	1025635	4%
Transportation	262015	1%
Agriculture	17097394	60%
Forest/Grassland	8642462	30%
Water/Wetland	1569456	5%

Source Information
Land Use/Land Cover from Illinois DNR, 1995.

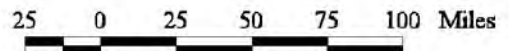
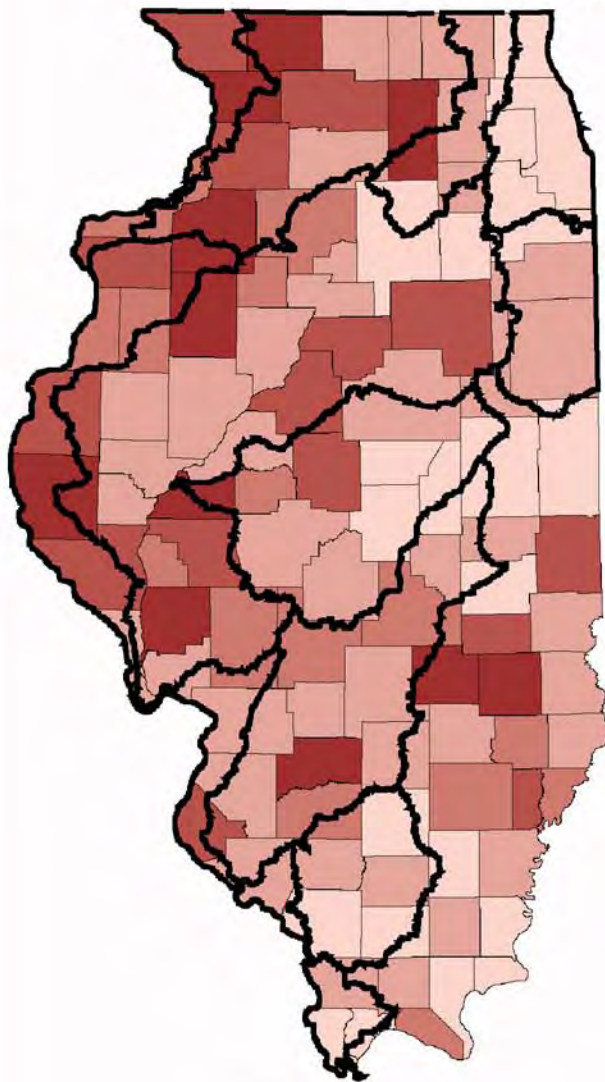
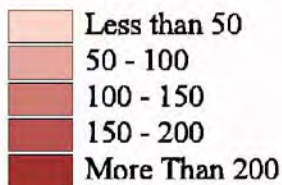


Figure 4: Estimated Wildlife & Livestock Density In Illinois

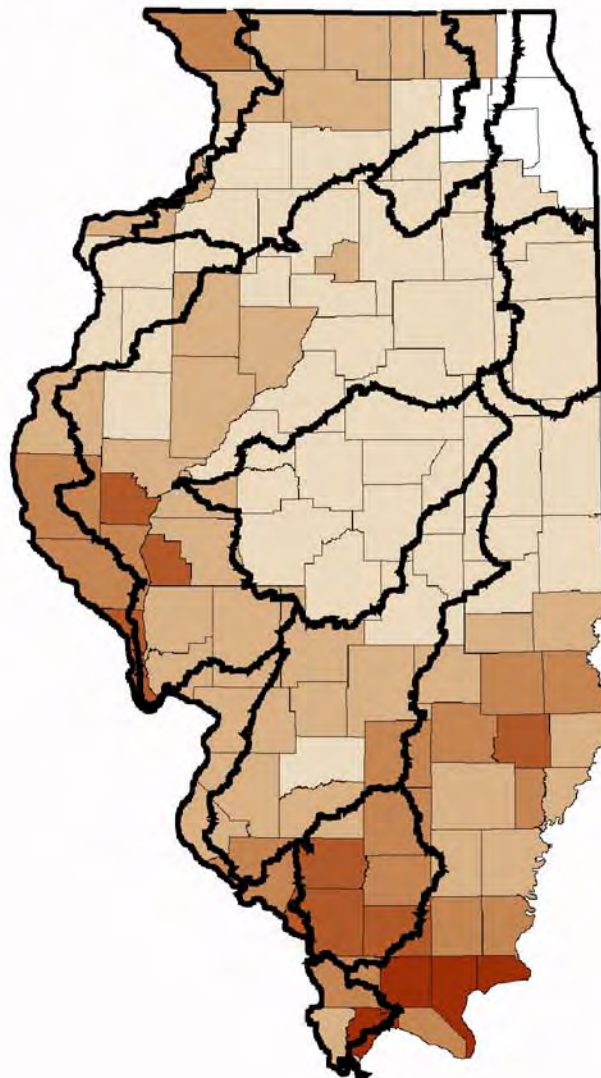


Livestock

Estimated Livestock Density Based On Number Of Cattle, Sheep, Hogs, Goats, and Horses Per Square Mile

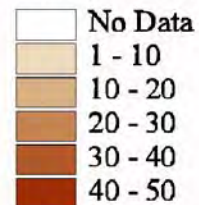


 Watershed Boundary



Wildlife

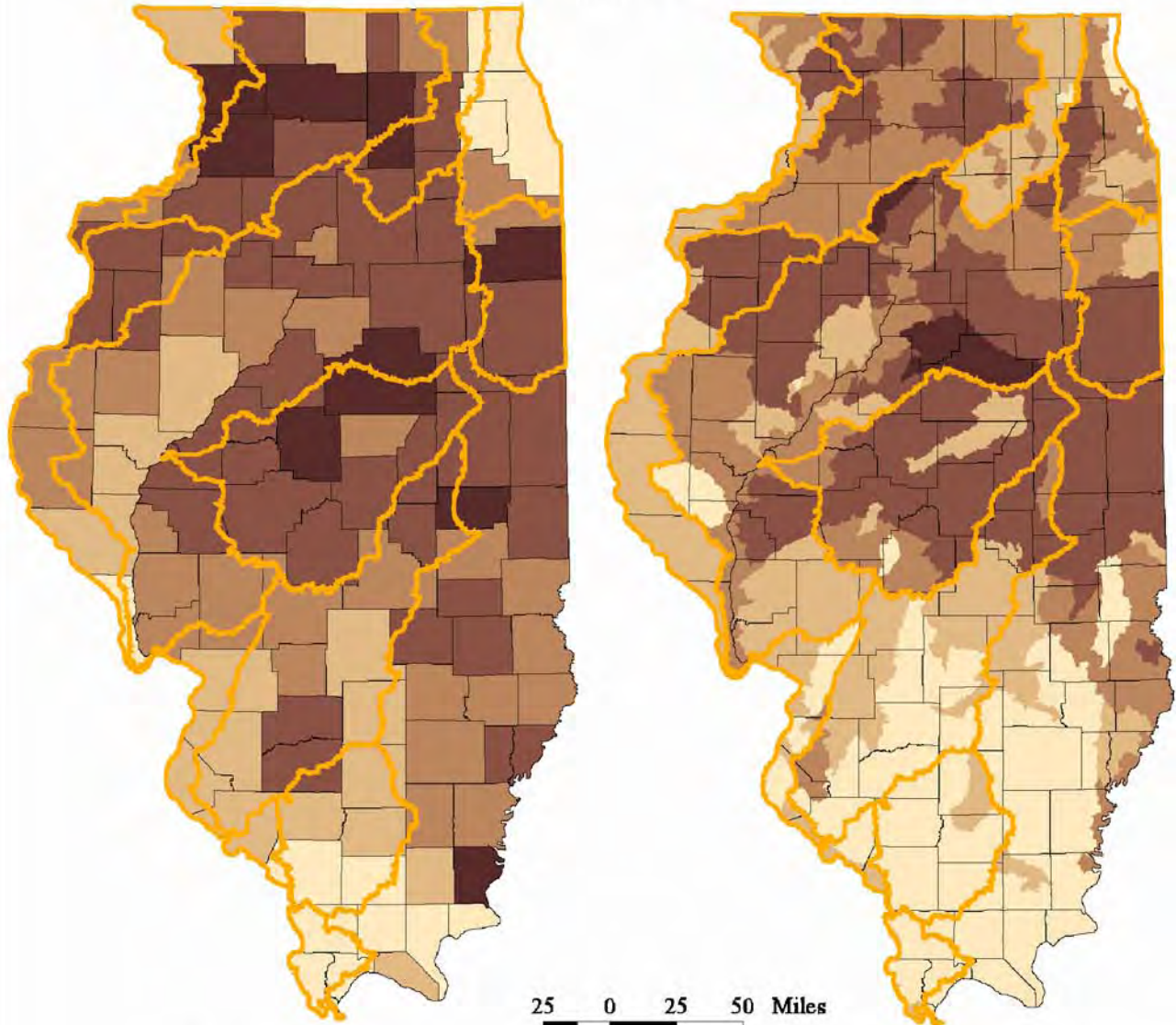
Estimated Wildlife Density Based On Number Of Whitetail Deer Per Square Mile



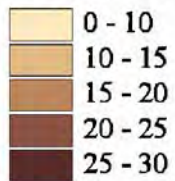
Source Information

Livestock data obtained from U.S. Dept. of Agriculture, 1997.
Whitetail deer populations from Illinois DNR, 1998.

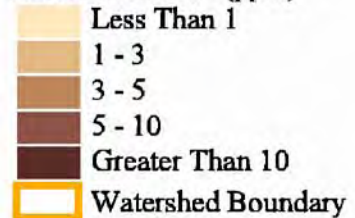
Figure 5: Estimated Nitrogen Usage By County & Nitrate Concentrations By Watershed In The Illinois Portion Of The Upper Mississippi Watershed



**Estimated Nitrogen Usage
By County (tons/sq mile)**



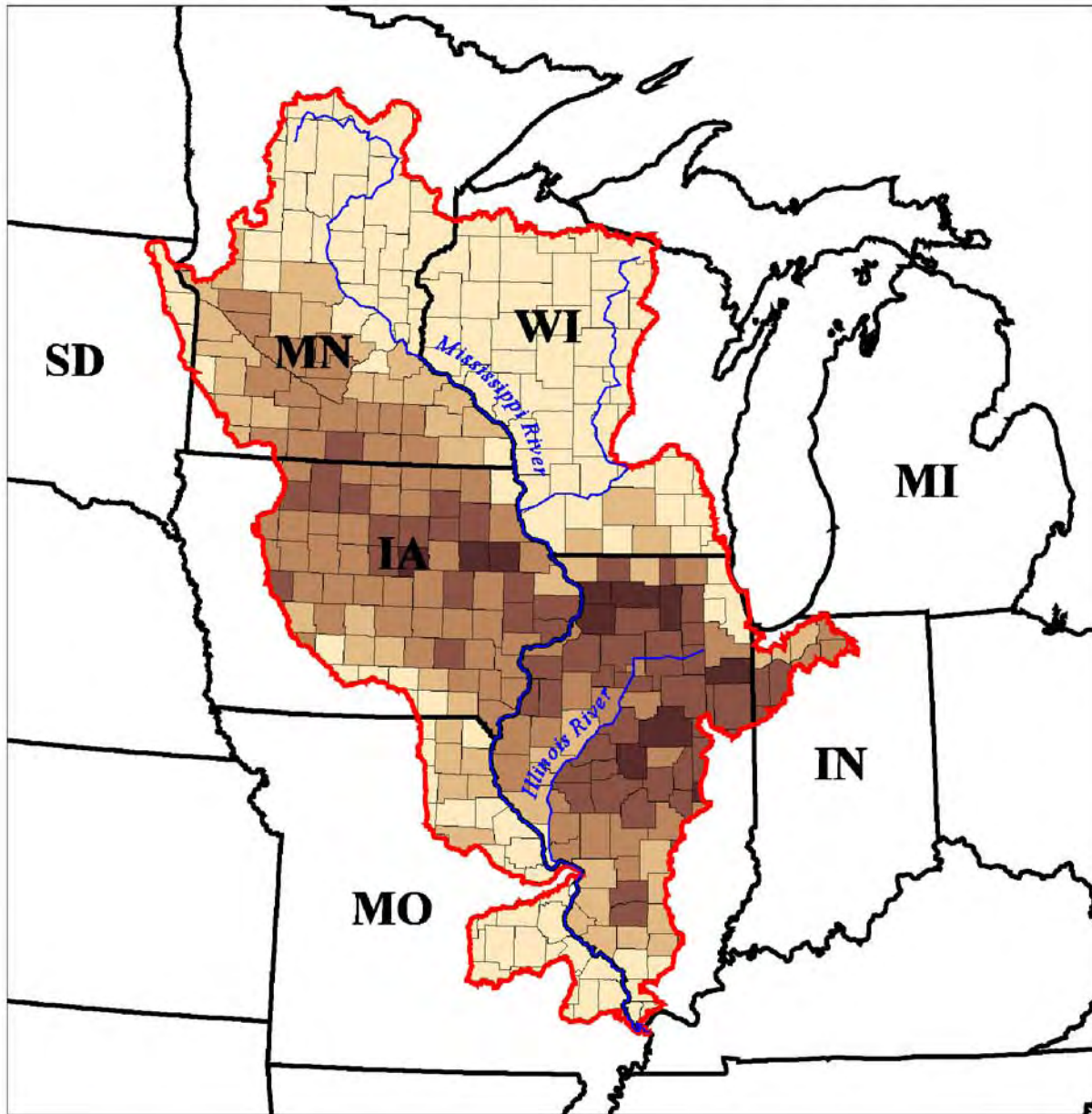
**16-Year Median Nitrate
Concentrations By Watershed,
Ambient Streams (ppm)**



Source Information

Nitrogen Usage by County from USGS, 1991.
Nitrate Detections By Watershed from Illinois EPA,
Ambient Stream data 1980-1996.

Figure 6: Estimated Nitrogen Usage In The Upper Mississippi River Watershed



Legend

- Major Rivers
- Mississippi River Watershed Boundary
- State Boundary

Source Information
Nitrogen usage data obtained from USGS, 1991.

**Estimated Nitrogen Usage
In Tons/Square Mile**

	0 - 10
	10 - 15
	15 - 20
	20 - 25
	25 - 30

50 0 50 100 Miles



Illinois EPA

Figure 7: Estimated Usage Of The 10 Most Common Herbicides In The Illinois Portion Of The Upper Mississippi River Watershed

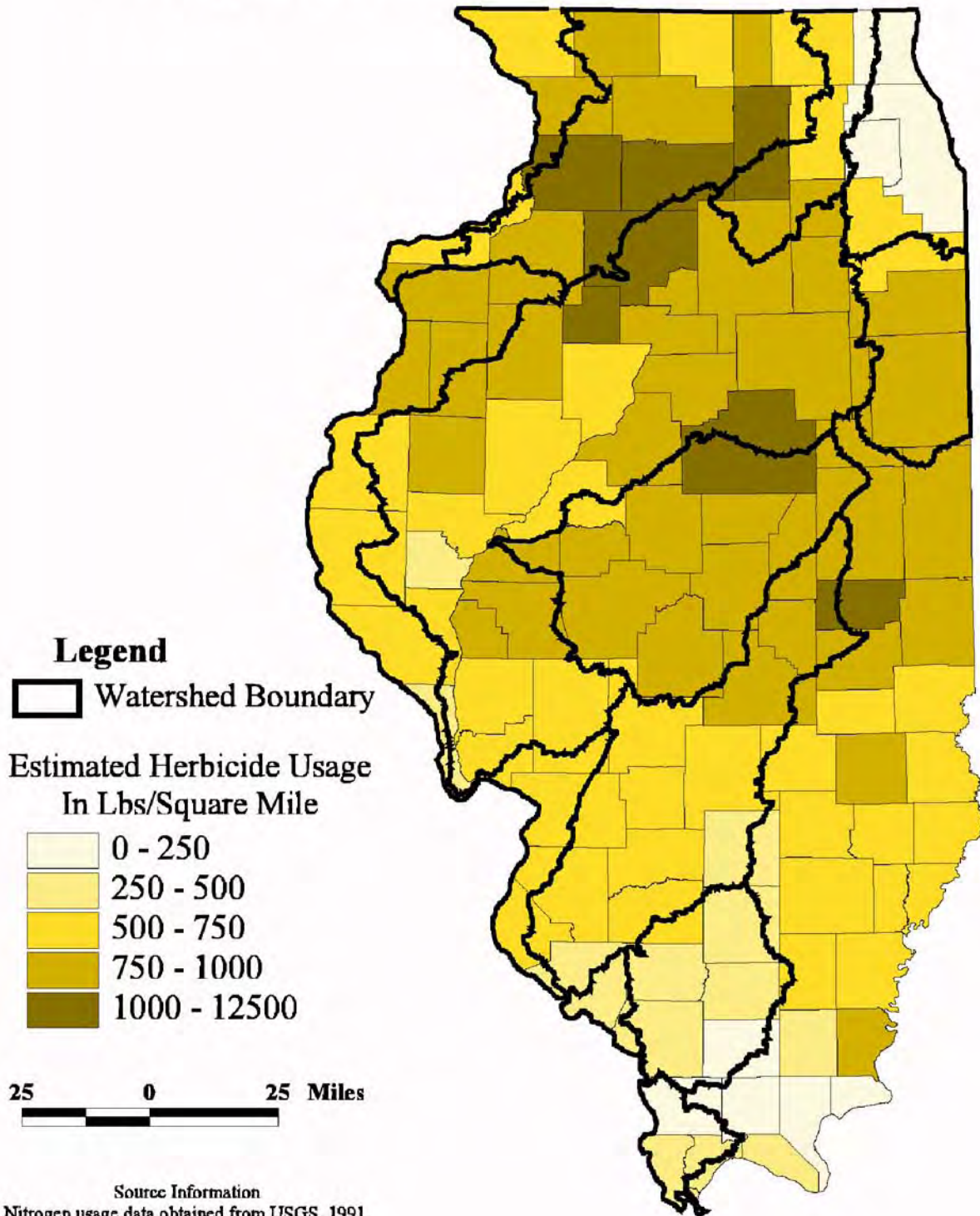
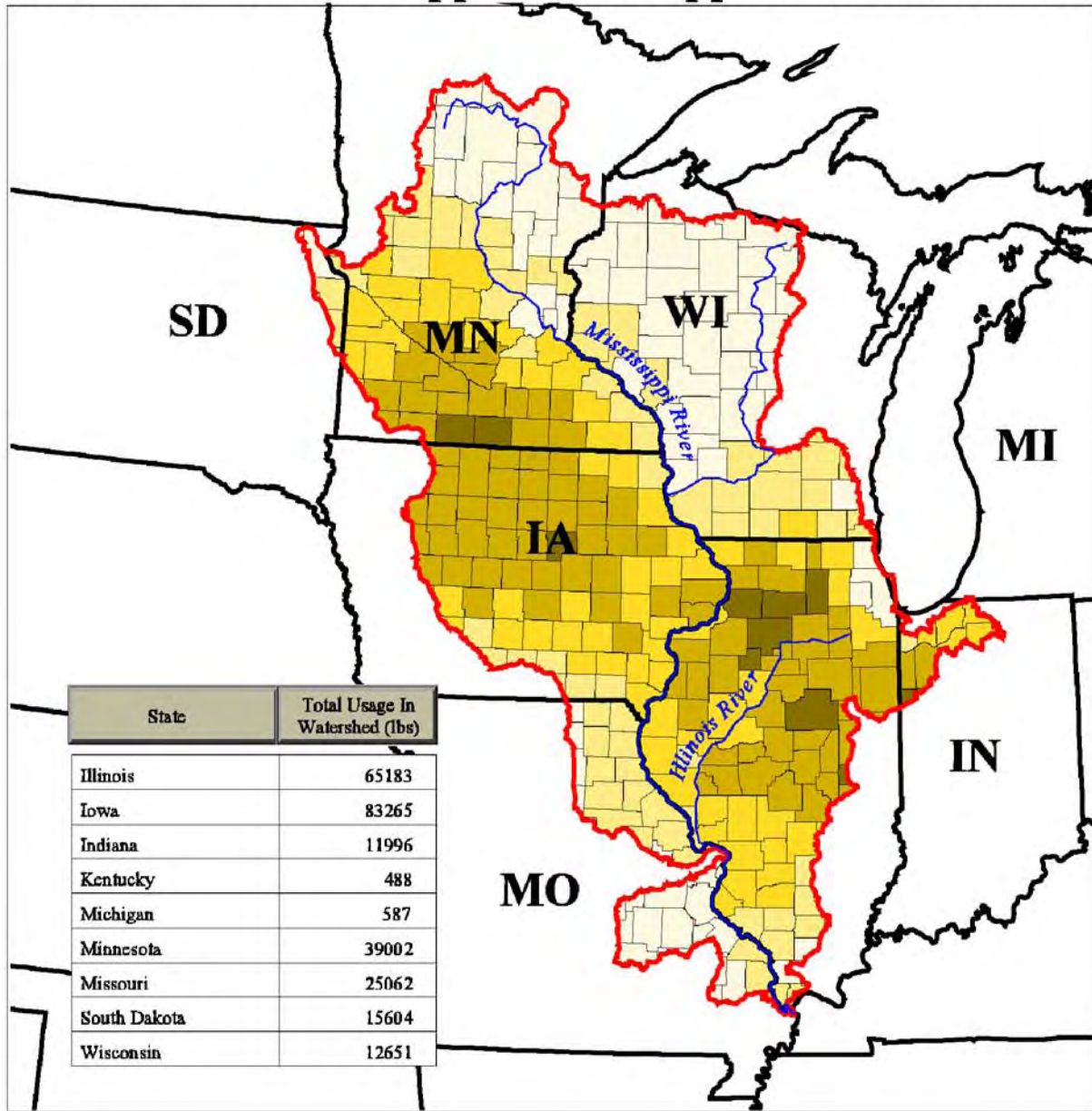


Figure 8: Estimated Usage Of The Ten Most Common Herbicides In The Upper Mississippi River Watershed



- Legend**
- Major Rivers
 - Mississippi River Watershed Boundary
 - State Boundary

Source Information
Herbicide usage data obtained from USGS, 1991.

Estimated Herbicide Usage In Lbs/Sq Mile

- 0 - 250
- 250 - 500
- 500 - 750
- 750 - 1000
- 1000 - 12500

50 0 50 100 Miles



Illinois EPA