



Annual Compliance Report

Calendar Year 2004

The Drinking Water Program: An Overview



Introduction

The United States Environmental Protection Agency (USEPA) established the Public Water System Supervision (PWSS) Program under the authority of the 1974 Safe Drinking Water Act (SDWA). Under the SDWA and the subsequent amendments, USEPA sets national limits on contaminant levels in drinking water to ensure that the water is safe for human consumption. These limits are known as Maximum Contaminant Levels (MCLs)² and Maximum Residual Disinfectant Levels (MRDL's)³. For some regulations, EPA establishes treatment techniques (TT)⁴ in lieu of an MCL to control unacceptable levels of contaminants in water. The Agency also regulates how often public water systems (PWSs)¹ monitor their water for contaminants and report the monitoring results to the states or USEPA. Generally, the larger the population served by a water system, the larger the number of samples collected and the more frequent the monitoring and reporting (M/R)⁵ requirements. In addition, USEPA requires Public Water Systems (PWSs) to monitor for unregulated contaminants to provide data for development of future regulations. Finally, USEPA requires PWSs to notify their consumers when they have violated these regulations. The 1996 Amendments to the SDWA require consumer notification to include a clear and understandable explanation of the nature of the violation, its potential adverse health effects, steps that the PWS is undertaking to correct the violation and the possibility of using alternative water supplies during the violation.

Annual State PWS Report

The purpose of this annual compliance report is to satisfy the requirement of Section 1414(c)(3) of the 1996 Amendments to the Safe Drinking Water Act (SDWA). States with national primary enforcement authority are to prepare, make readily available to the public, and submit to the Administrator of the USEPA by July 1 of each year, an annual report on violations occurring during the previous calendar year of national primary drinking water regulations by public water systems.

Annual Compliance Report Background



Each quarter, the Illinois Environmental Protection Agency (Illinois EPA) submits data to the Federal Safe Drinking Water Information System (SDWIS/FED), an automated database maintained by USEPA. The data submitted include, but are not limited to, PWS inventory information, the incidences of violations of Maximum Contaminant Levels, Maximum Residual Disinfectant Levels, monitoring, and treatment technique violations; and information on enforcement activity related to these violations. This report provides the numbers of violations in each of six categories:

- Maximum Contaminant Level (MCL) violations
- Maximum Residual Disinfectant Level (MRDL) violations,
- Treatment Technique (TT) requirement violations,
- Significant violations of Monitoring and Reporting (M/R) requirement violations,
- Significant violations of the Consumer Notification requirements,
- And Violations of Variances and Exemptions.

Attached to this report as Appendix A is a listing for each contaminant regulated by the SDWA, the numbers of maximum contaminant level (MCL), maximum residual disinfectant level (MRDL), treatment technique (TT) and major monitoring and reporting (M/R) violations for each compliance period during calendar year 2004, the number of violations that were returned to compliance (RTC), and the number of systems incurring violations. Appendix B and Appendix C contain a detailed listing of public water systems with MCL, MRDL, or TT violations.

Variances and Exemptions

A PWS can be granted a “variance” from a primary drinking water regulation if the characteristics of the raw water sources reasonably available to the PWS do not allow the system to meet the MCL. To obtain a variance, the system must agree to install the best available technology, treatment techniques, or other means of limiting drinking water contamination that the Administrator finds are available (taking costs into account), and the state must find that the variance will not result in an unreasonable risk to public health. The variance shall be reviewed not less than every 5 years to determine if the system remains eligible for the variance. During 2004, Illinois did not grant any variances.



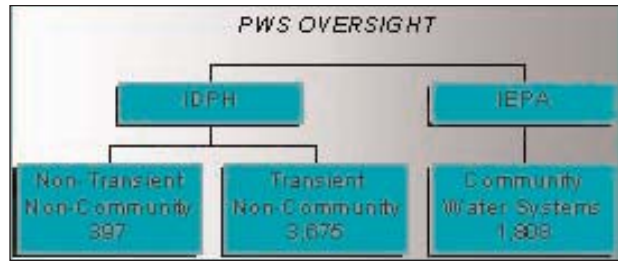
A water system may also petition the state for an “exemption”. An exemption is permission not to meet an MCL or a treatment technique under certain conditions for a period of time. An exemption may be granted to give a water system additional time to make complicated and expensive modifications and improvements to the water treatment process so that compliance may be achieved in the shortest period of time. During 2004, Illinois did not grant any exemptions.

Public Water System Overview

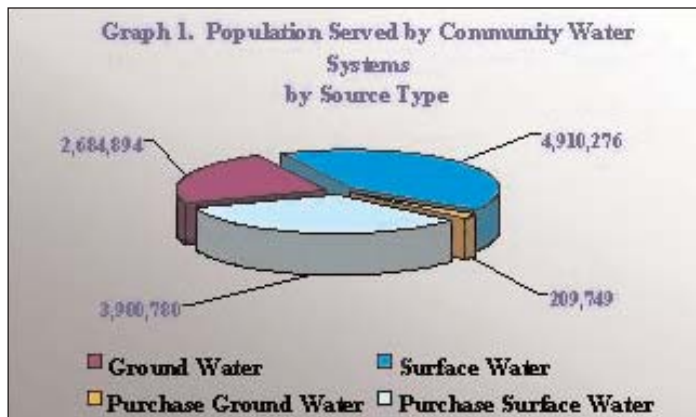
In Illinois, oversight of PWSs is divided between the Illinois Environmental Protection Agency (Illinois EPA) and the Illinois Department of Public Health (Illinois DPH). Illinois EPA has been designated as the lead agency for primary enforcement authority and oversees the **community public water system (CWS)** program (those supplies that serve 15 or more year around service connections or 25 or more year around residents). Illinois DPH oversees the

non-community water systems. Non-community systems include the **non-transient, non-community public water systems (NTNC)** that serve 25 or more of the same non-residents at least 180 days out of the year and include facilities such as day care centers, schools and factories. Illinois DPH also oversees the **transient non-community (TNC) public water systems** that serve 25 or more

different nonresidents at least 60 days out of the year and include facilities such as campgrounds and highway rest areas. The remainder of this report will detail the CWS supplies and then, separately, address the non-community (NTNC/TNC) supplies.



Community Public Water Supplies



As previously mentioned, the Illinois EPA oversees the **CWS** program. A CWS is a PWS that serves 25 or more people year around and/or has 15 service connections. • **Graph 1** depicts the breakdown of the 1,808 community water systems within Illinois with regard to their source of water. A total of 11,705,699 persons are served by those systems; 42 percent of that population is directly served from surface water systems. Thirty-three percent of the population is served by purchased surface

water, 2 percent by purchased ground water, and 23 percent by ground water systems. It is worth noting that although only 23 percent of the population is served by ground water; ground water systems comprise almost 59 percent (1,064 of the 1,808) of the total number of community water systems. The type of source water (ground, surface, or purchase) for a CWS will determine monitoring, treatment, and operational requirements. For example, surface water systems are required to monitor turbidity, where ground water systems (that are not under the influence of surface water) are not. This requirement will impact compliance numbers as outlined later in this report.

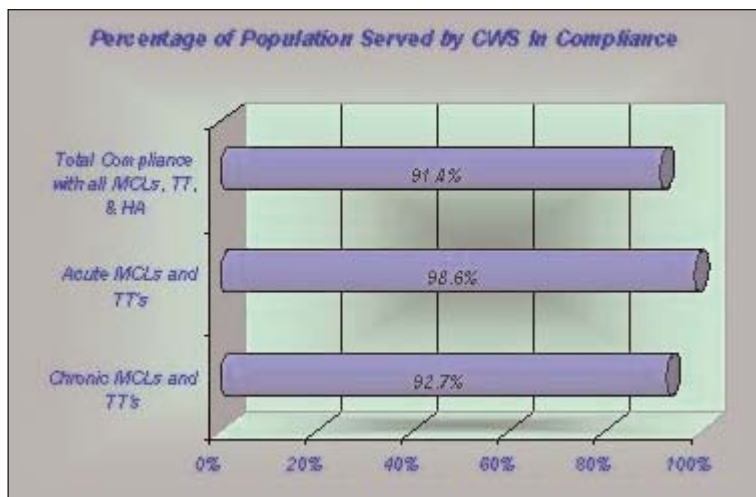
CWS - Environmental Indicators

The Illinois EPA Safe Drinking Water Goal is for every Illinois public water system to provide water that is consistently safe to drink. As a part of it's partnership agreement with USEPA, Illinois EPA measures the progress of the drinking water program with environmental indicators consisting of the percentage of persons served by community water systems that have not incurred violations of any acute MCL, chronic MCL, acute treatment technique, chronic treatment technique or public education during the year. The environmental objective of the Illinois EPA is to increase the percentage of population served by CWSs that receive drinking water with no

short-term (acute) or long-term (chronic) adverse health effects to over 95 percent by the year 2005. The progress towards this objective is summarized below.

CWS - Environmental Indicator Progress

Safe drinking water should be free of contaminants that have the potential to cause either short term or long-term health effects. During calendar year 2004, the percentage of persons served by Illinois CWSs that have been in effect for more than three years and that were compliant with all health requirements (MCL), treatment techniques (TT), or public education was **91.4** percent. Compliance efforts will continue to focus on minimizing the frequency and duration of excursions and the development of enforceable schedules for the implementation of corrective action plans to achieve sustained compliance.



• Graph 2

CWS Compliance Percentages

Persons Served by Compliant *Community Water Supplies*

During calendar year 2004, the percentage of persons served by Illinois **CWSs** that were compliant with all health requirements was 91.4 percent. This compliance percentage represents over a three-percentage improvement from calendar year 1995 and reflects continued progress toward the goal of 95 percent. It is important that safe drinking water be free of contamination that has the potential to cause either short-term or long-term health effects.

CWS - Acute vs. Chronic Indicators

The contaminants fall into two groups according to the health effects that they cause:

Acute	Chronic
<p>Acute effects occur within hours or days of the time that a person consumes a contaminant. People can suffer acute health effects from almost any contaminant if they are exposed to extraordinarily high levels (as in the case of a spill). In drinking water, microbes, such as bacteria and viruses, are the contaminants with the greatest chance of reaching levels high enough to cause acute health effects. Most people's bodies can fight off these microbial contaminants the way they fight off germs; and these acute contaminants typically don't have permanent effects. Nonetheless, when high enough levels occur, they can make people ill, and can be dangerous or deadly for a person whose immune system is already weak due to HIV/AIDS, chemotherapy, steroid use, or another reason.</p>	<p>Chronic effects occur after people consume a contaminant at levels over EPA's safety standards for many years. USEPA develops the standards for chronic MCLs on the basis that a person may have an adverse health effect after consuming two liters of water daily over a 70 year lifetime. The drinking water contaminants that can have chronic effects are chemicals (such as disinfection by-products, solvents, and pesticides), radionuclides (such as radium), and minerals (such as arsenic). Examples of the chronic effects of drinking water contaminants are cancer, liver or kidney problems, or reproductive difficulties.</p>

Graph 3 (below) shows that **98.6** percent of the population served by Illinois CWS received drinking water in compliance with acute (short-term) health requirements, and **92.7** percent were in compliance with chronic (long-term) health requirements. It is important to note that most non-compliance was short in duration, and the potential for health risk was minimized through prompt corrective action by the water supplies. Supplies with microbial problems (bacterial or turbidity non-compliance) are required to issue boil orders when the violation occurs. Community water system acute MCLs were limited to five water systems.

Acute and Chronic Requirements (2004 data)

Percent of CWS Population Served Compliant with Health Records

ACUTE



■ Compliant ■ Non-compliant

CHRONIC



■ Compliant ■ Non-Compliant

CWS - Lead And Copper Compliance

In 2004, 1,690 water supplies, or approximately **93.4** percent of community water supplies were below the lead action level. These water supplies serve **98.5** percent of the population. There were no treatment technique violations reported for the NTNC water systems overseen by IDPH.

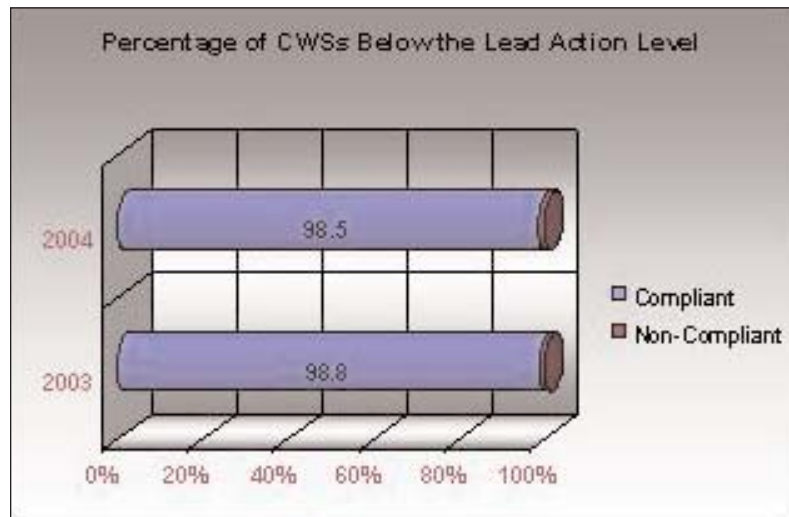


Lead and Copper Rule Compliance

Lead and copper are regulated by a Treatment Technique that requires systems to control the corrosiveness of their water. The lead action level (15 parts per billion of lead) when exceeded in more than ten percent of the water samples collected in consumers' homes, requires the water supply to implement optimal corrosion control treatment plans or procedures which would prevent anticipated adverse health effects and ensure that lead or copper is controlled in the drinking water.

• **Graph 4** illustrates the Percentage of **Community** Water Systems that were below the lead action level.

This corresponds to the percentage of CWSs that did not receive a treatment technique violation during calendar year 2004. During the years 2003 to 2004, a 0.3 percent net increase in lead action level exceedances was seen in CWSs. Generally, non-compliance is for a short period of time due to the fact the treatment is adjusted to the required ranges.

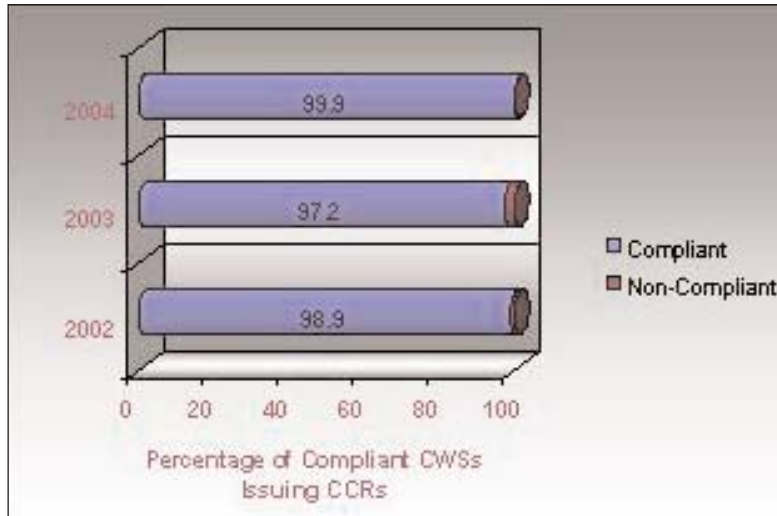


CWS - Consumer Awareness

Every community water supplier must provide an annual report (sometimes called a Consumer Confidence Report or CCR) to its customers. The report provides information on local drinking water quality, including the water's source, the contaminants found in the water, and how consumers can get involved in protecting drinking water. If the consumers have been looking for spe-

cific information about their drinking water, this annual report will provide them with the information they need. Graph 5 illustrates the percentage of CWSs that issued a CCR in a timely and accurate fashion in the year indicated.

CCR Compliance Data

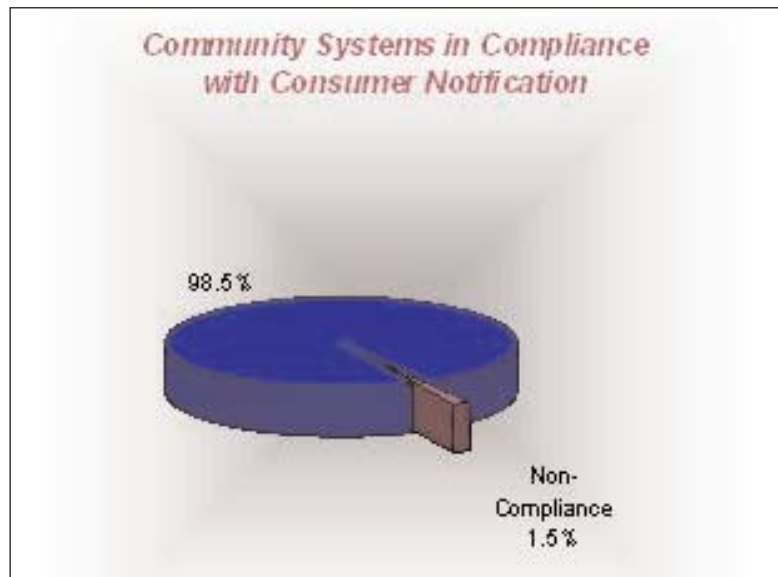


Graph 5

In connection with each violation described in the previous sections, public notification is required to be issued. Public notification provides a means to protect public health, build trust with consumers through open and honest sharing of information, and establishes an ongoing, positive relationship with the community. Public notice can also be used to help consumers understand rate increases and support increased

funding for drinking water treatment and protection. Properly done, the notices can work for the benefit of the public water supplier as well the public. In the event a problem occurs, educated consumers are more likely to understand the problem and support the actions a water utility must take. Many deadlines for public notice issuance depend upon prompt contact and discussion between the public water system and Illinois EPA. Efficient communication with prompt reporting is the cornerstone for compliance.

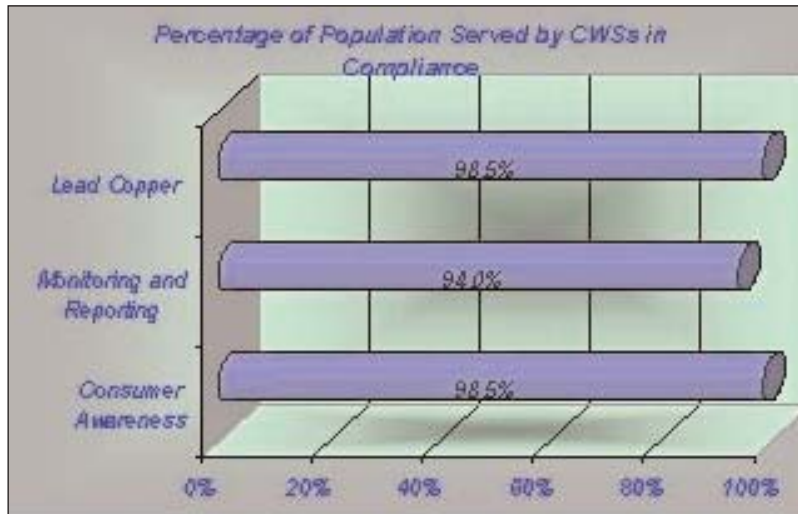
Graph 6 depicts the compliance rates for community water systems with regard to overall consumer notification. This includes public notice for all violations and the CCR compliance rate. For the year of 2004, 89 percent of CWSs required to issue public notice, did so in a timely and accurate fashion. Of the remaining 11 percent in non-compliance, over 75 percent of these CWSs issued their public notice, although did not meet all IEPA requirements. CCR compliance numbers are shown above in Graph 5.



Graph 6

Public Notice and CCR overall Compliance Rate for Community Systems

The following graph summarizes the consumer notification, monitoring and reporting, and the lead and copper compliance information for CWSs. Compliance percentages are based upon population served.



Community Water System Compliance Percentages –Population Served

IEPA Enforcement Strategy

The Illinois EPA has enforcement authority over community water systems in Illinois. Illinois EPA has a standardized protocol for all enforcement matters to ensure unilateral, consistent treatment of enforcement cases. For any violation outlined in the previous pages, a failure to take corrective action could result in the water system being considered for enforcement under Section 31 of the Illinois Environmental Protection Act. Enforcement normally begins with the identification of a significant unresolved violation by technical staff. Information about the violator/violations is forwarded to the Compliance Group (composed of Section Managers). If the Compliance Group determines a Violation Notice (VN) is warranted, the VN recommendation is sent to the Agency's Compliance Management Panel (CMP) for review. After review by the CMP, the Compliance Assurance Section prepares and issues the VN. After the VN is sent, the violator will have a set time period (45 days or 60 days depending on whether a meeting is requested) to respond in writing with a proposed Compliance Commitment Agreement (CCA). Enforcement activities are suspended if the proposed CCA is accepted by the Agency. If at a later point in time, the violator does not follow the CCA agreement, enforcement may resume.

If the proposed CCA is not accepted or the violator fails to respond to the VN, the case is brought before the Enforcement Decision Group (EDG, composed of senior Agency management). EDG will determine the next course of action such as recommending a case for formal enforcement, which consists of referring the water system to the State's Attorney General or the USEPA for filing with a court to direct corrective actions and which may include imposition of penalties or fines.

CWS Violation Summary Table

The following summarizes the percentage of community water systems in compliance with all aspects of the drinking water compliance program. Radionuclide MCLs comprise the largest number of violations, and consequently, cause the largest number of water systems to be out of compliance. Since the end of 2004, the number of water systems with radionuclide MCLs has been reduced to 73 from 108; a 33 percent reduction. With the effective date of the radionuclide rule in December 2003, systems are striving to achieve compliance by having begun construction on treatment (roughly 25 percent) or have completed construction and are waiting on a running annual average to fall below the MCL (roughly 14 percent). As these systems conclude construction, compliance numbers will improve. Those systems not making progress on reducing radium MCL levels are proceeding through the enforcement process previously outlined.

Violations during Calendar Year 2004 State of Illinois Community Water Systems

Total Number of Regulated Systems	1,808
Total Number of Systems in Violation	426
Total Number of Violations	2,180

Table 1.

Rule Subtotal by Violation Type – Community Water Systems									
Violation Category	MCLs			Treatment Techniques			Significant Monitoring/Notification		
	Number of Violations	Number of Systems in Violation*	Compliance Rate	Number of Violations	Number of Systems in Violation*	Compliance Rate	Number of Violations	Number of Systems in Violation*	Compliance Rate
Radiological	534	110	93.9%				91	28	98.4%
IOCs	0	0	100%				250	25	98.6%
BOCs	1	1	99.9%				292	12	99.3%
VOCs	3	1	99.9%				332	16	99.1%
Nitrate / Nitrite	4	3	99.8%				40	34	98.1%
TCR	54	45	97.5%				137	82	95.4%
All SWTRs				0	0	100%	8	5	99.7%
Stage 1 DBPR	23	14	99.2%	12	11	99.3%	210	105	94.1%
Lead and Copper Rule				49	49	97.2%	25	18	99.0%
Consumer Awareness / Notification							115	92	94.9%
Total PWSs	619	169	90.6%	45	31	98.2%	1516	312	82.7%

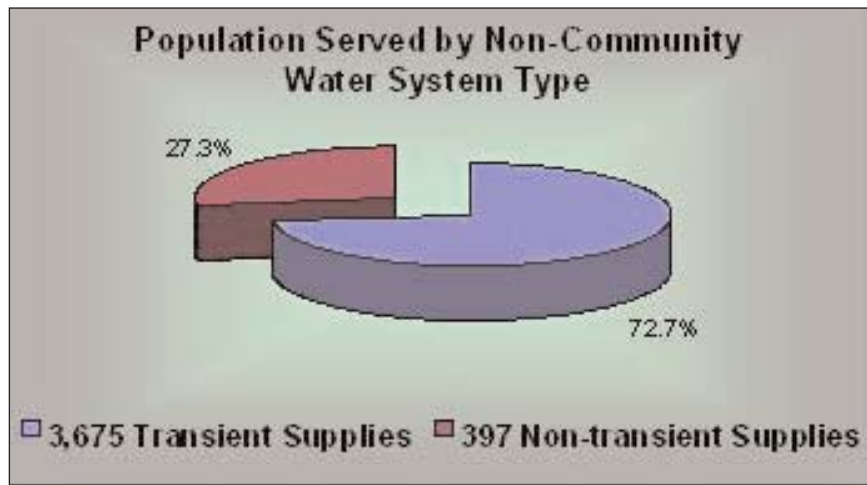
*Note: Although a CWS may be out of compliance with more than one contaminant or violation type, when calculating totals, it's counted no more than once within the population being totaled. So, the sum of NUMBER OF CWSs IN VIOLATION, over the various violation types or contaminants, may not add up to the total.

Non-Community Public Water Systems

As stated previously, Illinois DPH oversees the non-community water system program. Non-community systems include the **non-transient, non-community public water systems (NTNC)** that serve 25 or more of the same nonresidents at least 180 days out of the year and include facilities such as day care centers, schools and factories. Illinois DPH also supervises the **transient non-community (TNC) public water systems** that serve 25 or more different nonresidents at least 60 days out of the year and include facilities such as campgrounds and highway rest areas.

•Graph 7

Population Distribution Amongst Non-community Systems



Graph 7 depicts how the 529,944 consumers served by non-community water systems are distributed between the transient and non-transient systems. Transient supplies (campgrounds, rest areas, etc.) serve a population of 385,130 and 3,675 facilities. Non-transient systems serve 144,814 consumers and 397 systems.

Both NTNC and TNC are required to monitor contaminants like the CWSs and issue public notification if in violation. However, TNC only monitor for nitrates, coliform bacteria, and are subject to some requirements of the surface water treatment rule (if they use surface water). NTNC monitors the same contaminants as CWS, but are not required to monitor radionuclides or issue/publish a consumer confidence report.

Non-CWS Compliance Figures

During calendar year 2004, the percentage of persons served by Illinois **non-community** water systems that were compliant with all health requirements (MCL), treatment techniques (TT), or health advisories (HA) that have been in effect for more than three years) was **97.3** percent.

The following page summarizes the percentage of non-community water systems in compliance with all aspects of drinking water compliance.

**Violations during Calendar Year 2004
State of Illinois
Non-Community Water Systems**

Total Number of Regulated TNC and NTNC Systems	4072
Total Number of Systems in Violation	148
Total Number of Violations	174

Table 2.

Rule Subtotal by Violation Type – Non-Community Water Systems									
Violation Category	MCLs			Treatment Techniques			Significant Monitoring/Notification		
	Number of Violations	Number of Systems in Violation*	Compliance Rate	Number of Violations	Number of Systems in Violation*	Compliance Rate	Number of Violations	Number of Systems in Violation*	Compliance Rate
IOCs	0	0	100%	-	-	-	-	-	**
SOCs	0	0	100%	-	-	-	-	-	**
VOCs	0	0	100%	-	-	-	-	-	**
Nitrate / Nitrite	1	1	99.9%	-	-	-	2	2	99.9%
TCR	112	103	97.5%	-	-	-	37	35	99.1%
All SWTRs	-	-	-	-	-	-	4	1	99.9%
Stage 1 DBPR	11	4	99.0%	-	-	-	6	3	99.9%
Total PWSs	124	108	97.3%	0	0	100%	49	41	98.9%

*Note: Although a PWS may be out of compliance with more than one contaminant or violation type, when calculating totals, it's counted no more than once within the population being totaled. So, the sum of NUMBER OF PWSs IN VIOLATION, over the various violation types or contaminants, may not add up to the total.

** IDPH is undergoing a database conversion that did not allow complete tracking of data in 2004.

Common Terms & Definitions

¹Public Water System (PWS) A Public Water System (PWS) is defined as a system that provides water via piping or other constructed conveyances for human consumption to at least 15 service connections or serves an average of at least 25 people for at least 60 days each year. There are three types of PWSs. PWSs can be community (such as towns), non-transient non-community (such as schools or factories), or transient non-community systems (such as rest stops or parks). For this report when the acronym “PWS” is used, it means systems of all types unless specified in greater detail.

²Maximum Contaminant Level (MCL) Under the Safe Drinking Water Act (SDWA), the EPA sets national limits on contaminant levels in drinking water to ensure that the water is safe for human consumption. These limits are known as Maximum Contaminant Levels (MCLs).

³Maximum Residual Disinfectant Level (MRDL) The EPA sets national limits on residual disinfectant levels in drinking water to reduce the risk of exposure to disinfection byproducts formed when public water systems add chemical disinfectant for either primary or residual treatment. These limits are known as Maximum Residual Disinfectant Levels (MRDLs).

⁴Treatment Techniques (TT) For some regulations, the EPA establishes treatment techniques (TTs) in lieu of an MCL to control unacceptable levels of certain contaminants. For example, treatment techniques have been established for viruses, some bacteria, and turbidity.

Return to Compliance

As noted in the definition of monitoring violations, systems which monitor less frequently than quarterly can return to compliance. Some systems can return to compliance if they monitor for the missed contaminants or submit reports late. In this report, return to compliance rates were determined for inorganic contaminants; nitrate; nitrite; regulated volatile organic contaminants; synthetic organic contaminants; total trihalomethanes; five haloacetic acids (DBPs); and radiological contaminants, as a group.

⁵Significant Monitoring and Reporting (M/R) Violations A PWS is required to monitor and verify that the levels of contaminants present in the water do not exceed the MCL. If a PWS fails to have its water tested as required or fails to report test results correctly to the appropriate Agency, a monitoring violation occurs. For this report, significant monitoring violations are generally defined as any significant monitoring violation that occurred during the calendar year of the report. A significant monitoring violation, with rare exceptions, occurs when no samples were taken or no results were reported during a compliance period.

⁶Significant Consumer Notification Violations Every Community Water System is required to deliver to its customers a brief annual water quality report (CCR). This report is to include some educational material, and will provide information on the source water, the levels of any detected contaminants, and compliance with drinking water regulations. For this report, a significant public notification violation occurred if a community water system completely failed to provide its customers the required annual water quality report.

OBTAINING COPY OF 2004 PUBLIC WATER SYSTEMS REPORT

As required by the Safe Drinking Water Act, the Illinois EPA has made the 2004 Public Water Systems report available to the public. Interested individuals can obtain a copy of the 2004 Annual Public Water Systems Report for Illinois by accessing:

State Website: <http://www.epa.state.il.us/water/compliance/drinking-water/compliance-report/index.html>

Telephone: (217) 785 0561

Fax Number: (217) 557 1407

Address: Illinois EPA
Bureau of Water, Compliance Assurance Section
1021 North Grand Ave
PO Box 19276
Springfield, IL 62794

Contact Name: Mike Crumly

Appendix A

The attached tables summarize the number of maximum contaminant level, treatment technique, and significant monitoring violations that occurred during calendar year 2004 for each contaminant regulated by the Safe Drinking Water Act (SDWA). Also identified is the number of public water supplies responsible for the violations and the number of violations that have returned to compliance.

Appendix A
Illinois EPA 2004 Annual Compliance Report
Calendar Year 2004
Community Water Supplies

Volatile Organic Chemicals (VOCs)								
Code	Name	MCL (mg/l)	MCLs*			Monitoring*		
			# of Violations	# of RTC Violations	# of PWSs In Violation	# of Violations	# of RTC Violations	# of PWSs In Violation
2977	1,1-Dichloroethylene	0.007	0	0	0	16	10	10
2981	1,1,1-Trichloroethane	0.2	0	0	0	16	10	10
2985	1,1,2-Trichloroethane	0.005	0	0	0	16	10	10
2980	1,2-Dichloroethane	0.005	0	0	0	16	10	10
2983	1,2-Dichloropropane	0.005	0	0	0	16	10	10
2378	1,2,4-Trichlorobenzene	0.07	0	0	0	16	10	10
2990	Benzene	0.005	0	0	0	16	10	10
2982	Carbon Tetrachloride	0.005	0	0	0	16	10	10
2380	Cis-1,2-Dichloroethylene	0.07	0	0	0	16	10	10
2964	Dichloromethane (Methylene Chloride)	0.005	3	3	1	17	10	11
2992	Ethylbenzene	0.7	0	0	0	17	11	11
2989	Monochlorobenzene (Chlorobenzene)	0.1	0	0	0	16	10	10
2968	o-Dichlorobenzene	0.6	0	0	0	16	10	10
2969	p-Dichlorobenzene	0.075	0	0	0	16	10	10
2996	Styrene	0.1	0	0	0	18	12	11
2987	Tetrachloroethylene	0.005	0	0	0	16	10	10
2991	Toluene	1	0	0	0	16	10	10
2979	Trans-1,2-Dichloroethylene	0.1	0	0	0	16	10	10
2984	Trichloroethylene	0.005	0	0	0	16	10	10
2955	Xylenes, Total	10	0	0	0	24	18	15
2976	Vinyl Chloride	0.002	0	0	0	0	0	0
VOC Totals			3	3	1	332	211	16

Note: Although a PWS may be out of compliance with more than one contaminant or violation type, when calculating totals, it's counted no more than once within the population being totaled. So, the sum of NUMBER OF PWSs IN VIOLATION, over the various violation types or contaminants, may not add up to the total.

Appendix A
Illinois EPA 2004 Annual Compliance Report
Calendar Year 2004
Community Water Supplies

Synthetic Organic Chemicals (SOCs)								
Code	Name	MCL (mg/l)	MCLs*			Monitoring*		
			# of Violations	# of RTC Violations	# of PWSs In Violation	# of Violations	# of RTC Violations	# of PWSs In Violation
2931	1,2 Dibromo-3-Chloropropane (DBCP)	0.0002	0	0	0	10	2	6
2105	2,4-D	0.07	0	0	0	10	2	6
2063	2,3,7,8-TCDD (Dioxin)	3x10-8	0	0	0	0	0	0
2110	2,4,5-TP (Silvex)	0.05	0	0	0	10	2	6
2051	Alachlor (Lasso)	0.002	0	0	0	13	4	8
2050	Atrazine	0.003	0	0	0	11	3	7
2306	Benzo (A) Pyrene	0.0002	1	1	1	12	4	7
2010	BHC-gamma (Lindane)	0.0002	0	0	0	10	2	6
2046	Carbofuran	0.04	0	0	0	10	2	6
2959	Chlordane	0.002	0	0	0	10	2	6
2031	Dalapon	0.2	0	0	0	10	2	6
2035	Di(2-Ethylhexyl) Adipate	0.4	0	0	0	10	2	6
2039	Di(2-Ethylhexyl) Phthalate	0.006	0	0	0	10	2	6
2041	Dinoseb	0.007	0	0	0	10	2	6
2032	Diquat	0.02	0	0	0	10	2	6
2033	Endothall	0.1	0	0	0	10	2	6
2005	Endrin	0.002	0	0	0	10	2	6
2946	Ethylene Dibromide (EDB)	0.00005	0	0	0	10	2	6
2034	Glyphosate	0.7	0	0	0	0	0	0
2065	Heptachlor	0.0004	0	0	0	10	2	6
2067	Heptachlor Epoxide	0.0002	0	0	0	10	2	6
2274	Hexachlorobenzene (HCB)	0.001	0	0	0	10	2	6
2042	Hexachlorocyclopentadiene	0.05	0	0	0	10	2	6
2015	Methoxychlor	0.04	0	0	0	10	2	6
2036	Oxamyl (Vydate)	0.2	0	0	0	10	2	6
2326	Pentachlorophenol	0.001	0	0	0	15	7	8
2040	Picloram	0.5	0	0	0	10	2	6

Note: Although a PWS may be out of compliance with more than one contaminant or violation type, when calculating totals, it's counted no more than once within the population being totaled. So, the sum of NUMBER OF PWSs IN VIOLATION, over the various violation types or contaminants, may not add up to the total.

Appendix A
Illinois EPA 2004 Annual Compliance Report
Calendar Year 2004
Community Water Supplies

SOCs continued								
Code	Name	MCL (mg/l)	MCLs*			Monitoring*		
			# of Violations	# of RTC Violations	# of PWSs In Violation	# of Violations	# of RTC Violations	# of PWSs In Violation
2037	Simazine	0.004	0	0	0	11	2	7
2383	Total Polychlorinated Biphenyls (PCB)	0.0005	0	0	0	10	2	6
2020	Toxaphene	0.003	0	0	0	10	2	6
SOC Totals			1	1	1	292	66	12

Code	Name	MCL (mg/l)	Treatment Technique*			Monitoring*		
			# of Violations	# of RTC Violations	# of PWSs In Violation	# of Violations	# of RTC Violations	# of PWSs In Violation
2257	Epichlorohydrin	TT	0	0	0	0	0	0
2265	Acrylamide	TT	0	0	0	0	0	0
Totals			0	0	0	0	0	0

Note: Although a PWS may be out of compliance with more than one contaminant or violation type, when calculating totals, it's counted no more than once within the population being totaled. So, the sum of NUMBER OF PWSs IN VIOLATION, over the various violation types or contaminants, may not add up to the total.

Appendix A
Illinois EPA 2004 Annual Compliance Report
Calendar Year 2004
Community Water Supplies

Inorganic Chemicals (IOCs)								
Code	Name	MCL (mg/l)	MCLs*			Monitoring*		
			# of Violations	# of RTC Violations	# of PWSs In Violation	# of Violations	# of RTC Violations	# of PWSs In Violation
1074	Antimony, Total	0.006	0	0	0	22	1	22
1005	Arsenic	0.05	0	0	0	23	1	23
1010	Barium	2	0	0	0	23	1	23
1075	Beryllium, Total	0.004	0	0	0	24	2	24
1015	Cadmium	0.005	0	0	0	24	2	24
1020	Chromium	0.1	0	0	0	23	1	23
1024	Cyanide	0.2	0	0	0	24	1	24
1025	Fluoride	4	0	0	0	20	1	20
1035	Mercury	0.002	0	0	0	21	1	21
1040	Nitrate	10	2	1	2	35	13	334
1038	Total Nitrite & Nitrate	10	0	0	0	0	0	0
1041	Nitrite	1	2	2	1	5	2	4
1045	Selenium	0.05	0	0	0	23	1	23
1085	Thallium, Total	0.002	0	0	0	23	1	23
1094	Asbestos	7 MFL	0	0	0	0	0	0
IOC Totals			4	3	3	290	28	54

Note: Although a PWS may be out of compliance with more than one contaminant or violation type, when calculating totals, it's counted no more than once within the population being totaled. So, the sum of NUMBER OF PWSs IN VIOLATION, over the various violation types or contaminants, may not add up to the total.

Appendix A
Illinois EPA 2004 Annual Compliance Report
Calendar Year 2004
Community Water Supplies

Radionuclide Contaminants (RAD)								
Code	Name	MCL	MCLs*			Monitoring*		
			# of Violations	# of RTC Violations	# of PWSs In Violation	# of Violations	# of RTC Violations	# of PWSs In Violation
4000 & 4109	Gross Alpha Adjusted Gross Alpha	15 pCi/L	162	61	54	31	23	24
4010	Radium-226 & Radium-228	5 pCi/L	372	89	107	32	24	25
4006	Uranium	30 pCi/L	0	0	0	0	0	0
4100	Gross Beta	4/mrem/yr	0	0	0	0	0	0
RAD Totals			534	150	110	91	64	28

Coliform (TCR)							
Violation Type	Violation Name	# of Violations*	# of RTC Violations*	# of PWSs In Violation*			
21	MCL, Acute	3	3	3			
22	MCL, Monthly	51	51	44			
23, 25	Monitoring Routine & Repeat Major	137	134	82			
		MCLs*			Monitoring*		
		# of Violations	# of RTC Violations	# of PWSs In Violation	# of Violations	# of RTC Violations	# of PWSs In Violation
TCR Totals		54	54	45	137	134	82

Note: Although a PWS may be out of compliance with more than one contaminant or violation type, when calculating totals, it's counted no more than once within the population being totaled. So, the sum of NUMBER OF PWSs IN VIOLATION, over the various violation types or contaminants, may not add up to the total.

Appendix A
Illinois EPA 2004 Annual Compliance Report
Calendar Year 2004
Community Water Supplies

Surface Water Treatment Rules (SWTR)											
Violation Type	Contam Code	Violation Name	# of Violations*	# of RTC Violations*	# of PWSs In Violation*						
41 SWTR	0200	SWTR Treatment Technique, Filtered	5	0	2						
42 SWTR	0200	SWTR Treatment Technique, Unfiltered	0	0	0						
31 and 36	0200	SWTR Major Monitoring, (M/R)	0	0	0						
03 SWTR	0100	Turbidity Monitoring/Reporting	0	0	0						
37 IESWTR	0300	IESWTR Treatment Technique Failure to Profile	2	0	2						
43, 44, and 47 IESWTR	0300	IESWTR Treatment Technique	1	1	1						
29 and 38 IESWTR	0300	IESWTR Major Monitoring	0	0	0						
09 IESWTR	0300	IESWTR Record Keeping	0	0	0						
			MCLs*			Monitoring*			Treatment Technique*		
			# of Violations	# of RTC Violations	# of PWSs In Violation	# of Violations	# of RTC Violations	# of PWSs In Violation	# of Violations	# of RTC Violations	# of PWSs In Violation
SWTR/IESWTR Total			0	0	0	0	0	0	8	1	5

Note: Although a PWS may be out of compliance with more than one contaminant or violation type, when calculating totals, it's counted no more than once within the population being totaled. So, the sum of NUMBER OF PWSs IN VIOLATION, over the various violation types or contaminants, may not add up to the total.

Appendix A
Illinois EPA 2004 Annual Compliance Report
Calendar Year 2004
Community Water Supplies

Stage 1 Disinfectants and Disinfection Byproducts Rule (Stage 1 DBPR)										
Violation Type	Contam Code	Violation Name	# of Violations*			# of RTC Violations*		# of PWSs In Violation*		
12 and 37	0400	Qualified Operator Failure or Failure to Profile/Consult TT	0			0		0		
46	2920	Inadequate DBP Precursor Removal Treatment Technique	12			2		11		
02	1011	Bromate MCL	0			0		0		
02	1009	Chlorite MCL	1			1		1		
02	2456	Total Haloacetic Acids (HAA) MCL	8			2		6		
02	2950	Total Trihalomethanes (TTHM) MCL	14			0		10		
11	0999	Chlorine Maximum Residual Disinfectant Level (MRDL)	0			0		0		
11	1006	Chloramine MRDL	0			0		0		
11	1008	Chlorine Dioxide MRDL	0			0		0		
11	1008	Chlorine Dioxide Monitoring	0			0		0		
13	1008	Chlorine Dioxide MRDL Acute	0			0		0		
27	0400	No DBPR Monitoring Plan	0			0		0		
27	0999	Chlorine Monitoring	145			135		78		
27	1004	Bromide Monitoring	0			0		0		
27	1006	Chloramine Residual Monitoring	4			4		3		
27	1008	Chlorine Dioxide Residual Monitoring	0			0		0		
27	1009	Chlorite Monitoring	0			0		0		
27	1011	Bromate Monitoring	2			2		1		
27	2456	Total Haloacetic Acids (HAA) Monitoring	16			8		14		
27	2920	TOC Monitoring	22			22		12		
27	2950	Total Trihalomethanes (TTHM) Monitoring	16			8		14		
MCLs/MRDL* Monitoring* Treatment Technique*										
		# of Violations	# of RTC Violations	# of PWSs In Violation	# of Violations	# of RTC Violations	# of PWSs In Violation	# of Violations	# of RTC Violations	# of PWSs In Violation
Stage 1 DBPR Totals		23	3	14	210	184	105	12	2	11

Note: Although a PWS may be out of compliance with more than one contaminant or violation type, when calculating totals, it's counted no more than once within the population being totaled. So, the sum of NUMBER OF PWSs IN VIOLATION, over the various violation types or contaminants, may not add up to the total.

Appendix A
Illinois EPA 2004 Annual Compliance Report
Calendar Year 2004
Community Water Supplies

Lead and Copper Rule (LCR)							
Violation Type	Violation Name	# of Violations*		# of RTC Violations*		# of PWSs In Violation*	
51	Monitoring, Initial Tap Sampling for Pb/Cu	4		2		4	
52	Monitoring, Follow-up & Routine Tap Sampling for Pb/Cu	45		8		45	
58	Treatment Installation	0		0		0	
59	Water Quality Parameter TT	9		8		6	
65	Public Education	16		14		12	
		Monitoring*			Treatment Technique*		
		# of Violations	# of RTC Violations	# of PWSs In Violation	# of Violations	# of RTC Violations	# of PWSs In Violation
LCR Totals		49	10	49	25	22	18

Consumer Notification						
Violation Type	Violation Name	# of Violations*		# of RTC Violations*		# of PWSs In Violation*
71	CCR, Significant Reporting	36		33		33
75 and 76	Public Notice Rule Reporting	79		66		65
TOTAL		115		99		92

Note: Although a PWS may be out of compliance with more than one contaminant or violation type, when calculating totals, it's counted no more than once within the population being totaled. So, the sum of NUMBER OF PWSs IN VIOLATION, over the various violation types or contaminants, may not add up to the total.

Appendix A
Illinois EPA 2004 Annual Compliance Report
Calendar Year 2004
Non - Community Water Supplies

Inorganic Chemicals (IOCs)								
Code	Name	MCL (mg/l)	MCLs*			Monitoring*		
			# of Violations	# of RTC Violations	# of PWSs In Violation	# of Violations	# of RTC Violations	# of PWSs In Violation
1040	Nitrate	10	1	1	1	2	0	2
1038	Total Nitrite & Nitrate	10	0	0	0	0	0	0
1041	Nitrite	1	0	0	0	0	0	0
IOC Totals			1	1	1	2	0	2

Coliform (TCR)							
Violation Type	Violation Name	# of Violations*	# of RTC Violations*	# of PWSs In Violation*			
21	MCL, Acute	4	1	4			
22	MCL, Monthly	108	74	100			
23, 25	Monitoring Routine & Repeat Major	37	26	35			
		MCLs*			Monitoring*		
		# of Violations	# of RTC Violations	# of PWSs In Violation	# of Violations	# of RTC Violations	# of PWSs In Violation
TCR Totals		112	75	103	37	26	35

Note: Although a PWS may be out of compliance with more than one contaminant or violation type, when calculating totals, it's counted no more than once within the population being totaled. So, the sum of NUMBER OF PWSs IN VIOLATION, over the various violation types or contaminants, may not add up to the total.

Appendix A
Illinois EPA 2004 Annual Compliance Report
Calendar Year 2004
Non - Community Water Supplies

Stage 1 Disinfectants and Disinfection Byproducts Rule (Stage 1 DBPR)											
Violation Type	Contam Code	Violation Name				# of Violations*	# of RTC Violations*	# of PWSs In Violation*			
02	2456	Total Haloacetic Acids (HAA) MCL				5	1	2			
02	2950	Total Trihalomethanes (TTHM) MCL				6	2	4			
27	2456	Total Haloacetic Acids (HAA) Monitoring				3	0	3			
27	2950	Total Trihalomethanes (TTHM) Monitoring				3	0	3			
			MCLs/MRDL*			Monitoring*			Treatment Technique*		
			# of Violations	# of RTC Violations	# of PWSs In Violation	# of Violations	# of RTC Violations	# of PWSs In Violation	# of Violations	# of RTC Violations	# of PWSs In Violation
Stage 1 DBPR Totals			11	3	4	6	0	3	0	0	0

Surface Water Treatment Rules											
Violation Type	Contam Code	Violation Name				# of Violations*	# of RTC Violations*	# of PWSs In Violation*			
31and 36	0200	SWTR Major Monitoring, (M/R)				4	0	1			
			MCLs*			Monitoring*			Treatment Technique*		
			# of Violations	# of RTC Violations	# of PWSs In Violation	# of Violations	# of RTC Violations	# of PWSs In Violation	# of Violations	# of RTC Violations	# of PWSs In Violation
SWTR/IESWTR Total			0	0	0	4	0	1	0	0	0

Note: Although a PWS may be out of compliance with more than one contaminant or violation type, when calculating totals, it's counted no more than once within the population being totaled. So, the sum of NUMBER OF PWSs IN VIOLATION, over the various violation types or contaminants, may not add up to the total.

Appendix A
Illinois EPA 2004 Annual Compliance Report
Calendar Year 2004
Non - Community Water Supplies

Surface Water Treatment Rules									
Violation Type	Contam Code	Violation Name	# of Violations*			# of RTC Violations*		# of PWSs In Violation*	
31and 36	0200	SWTR Major Monitoring, (M/R)	4			0		1	
	MCLs*			Monitoring*			Treatment Technique*		
	# of Violations	# of RTC Violations	# of PWSs In Violation	# of Violations	# of RTC Violations	# of PWSs In Violation	# of Violations	# of RTC Violations	# of PWSs In Violation
SWTR/IESWTR Total	0	0	0	4	0	1	0	0	0

Note: Although a PWS may be out of compliance with more than one contaminant or violation type, when calculating totals, it's counted no more than once within the population being totaled. So, the sum of NUMBER OF PWSs IN VIOLATION, over the various violation types or contaminants, may not add up to the total.

Appendix A
Illinois EPA 2004 Annual Compliance Report
Calendar Year 2004
Community Water Supplies

2004 State Summary – <u>Community</u> Water Supplies (CWS)										
Rule Group	Chemical Sub-Group	MCLs*			Monitoring/Notification*			Treatment Technique*		
		# of Violations	# of RTC Violations	# of PWSs In Violation	# of Violations	# of RTC Violations	# of PWSs In Violation	# of Violations	# of RTC Violations	# of PWSs In Violation
CHEM	VOC	3	3	1	332	211	16			
	SOC	1	1	1	292	66	12			
	IOC	0	0	0	250	13	25			
	NO2/NO3	4	3	3	40	15	34			
	RAD	534	150	110	91	64	28			
CHEM Subtotal		542	157	114	1,005	369	98			
TCR Subtotal		54	54	45	137	134	82			
Stage 1 DBPR Subtotal		23	3	14	210	184	105	12	2	11
All SWTRs Subtotal					0	0	0	8	1	5
LCR Subtotal					49	10	49	25	22	18
Consumer Notification Subtotal					115	99	92			
TOTAL		619	214	169	1,516	796	312	45	25	31

Total Number of CWSs	Grand Total Number CWS Violations (MCL, Monitoring, and Treatment Technique)	Grand Total of CWSs in Violation (MCL, Monitoring, and Treatment Technique)
1,808	2,180	426

Note: Although a PWS may be out of compliance with more than one contaminant or violation type, when calculating totals, it's counted no more than once within the population being totaled. So, the sum of NUMBER OF PWSs IN VIOLATION, over the various violation types or contaminants, may not add up to the total.

Appendix A
Illinois EPA 2004 Annual Compliance Report
Calendar Year 2004
Non - Community Water Supplies

2004 State Summary – <u>NON-Community</u> Water Supplies (CWS)										
Rule Group	Chemical Sub-Group	MCLs*			Monitoring/Notification*			Treatment Technique*		
		# of Violations	# of RTC Violations	# of PWSs In Violation	# of Violations	# of RTC Violations	# of PWSs In Violation	# of Violations	# of RTC Violations	# of PWSs In Violation
CHEM	VOC	0	0	0	0	0	0			
	SOC	0	0	0	0	0	0			
	IOC	0	0	0	0	0	0			
	NO2/NO3	1	1	1	2	0	2			
CHEM Subtotal		1	1	1	2	0	2			
TCR Subtotal		112	75	103	37	26	35			
Stage 1 DBPR Subtotal		11	3	4	6	0	3	0	0	0
All SWTRs Subtotal					4	0	1	0	0	0
TOTAL		124	78	107	49	26	40	0	0	0

Total Number Systems	Grand Total Number Violations (MCL, Monitoring, and Treatment Technique)	Grand Total of Systems in Violation (MCL, Monitoring, and Treatment Technique)
4,072	173	147

Note: Although a PWS may be out of compliance with more than one contaminant or violation type, when calculating totals, it's counted no more than once within the population being totaled. So, the sum of NUMBER OF PWSs IN VIOLATION, over the various violation types or contaminants, may not add up to the total.

Appendix B

The attached report identifies all public water supplies with maximum contaminant level and treatment technique violations in contaminant order.

Appendix B

Illinois EPA 2004 Annual Compliance

Maximum Contaminant Level and Treatment Technique Violations

Listing by Contaminant

<u>Facility Number and Name</u>	<u>Contaminant</u>	<u>Comments</u>
IL0170100 ASHLAND	Atrazine MCL	Returned to Compliance
IL0875510 VIENNA CORRECTIONAL CENTER	Chlorite MCL	Returned to Compliance
IL1370040 APPLE CREEK WATER COOP	Coliform (Acute) MCL	Returned to Compliance
IL0894070 AURORA	Coliform (Acute) MCL	Returned to Compliance
IL3085803 CAMP HAUBERG (85803)	Coliform (Acute) MCL	Enforcement in process
IL3003640 HENNEPIN CANAL PKWY ST PK (3640)	Coliform (Acute) MCL	Returned to Compliance
IL1910020 JASPER WATERWORKS CORPORATION	Coliform (Acute) MCL	Returned to Compliance
IL3073700 ROBINSON WOODS S GR 2 3112	Coliform (Acute) MCL	Enforcement in process
IL3103333 SAND RIDGE STATE FOREST (103333)	Coliform (Acute) MCL	Enforcement in process
IL0015350 ABS WATER COOP	Coliform MCL	Returned to Compliance
IL0975020 ACORN ACRES SUBDIVISION	Coliform MCL	Returned to Compliance
IL3086124 ALLENDALE CONSERVATION CLUB (86124)	Coliform MCL	Returned to Compliance
IL3086132 ALLENDALE CONSERVATION CLUB (86132)	Coliform MCL	Returned to Compliance
IL1370040 APPLE CREEK WATER COOP	Coliform MCL	Returned to Compliance
IL0850050 APPLE RIVER	Coliform MCL	Returned to Compliance
IL3016485 ATWOOD HOMESTEAD OLD SETTLERHP	Coliform MCL	Enforcement in process
IL3016691 ATWOOD HOMESTEAD S PICNIC	Coliform MCL	Enforcement in process
IL3016527 ATWOOD HOMESTEAD WILL GROVE HP	Coliform MCL	Enforcement in process
IL1090050 BARDOLPH	Coliform MCL	Returned to Compliance
IL3132472 BOXERS AND BRIEFS	Coliform MCL	Enforcement in process
IL3142570 BRIMFIELD EVANGELICAL CHURCH	Coliform MCL	Returned to Compliance

Appendix B

Illinois EPA 2004 Annual Compliance

Maximum Contaminant Level and Treatment Technique Violations

Listing by Contaminant

<u>Facility Number and Name</u>	<u>Contaminant</u>	<u>Comments</u>
IL3117523 CACTUS COUNTRY	Coliform MCL	Returned to Compliance
IL1695100 CAMDEN-LITTLETON WATER COMMISSION	Coliform MCL	Returned to Compliance
IL3142620 CAMP AKITA BATHHOUSE WELL	Coliform MCL	Enforcement in process
IL3142638 CAMP AKITA LODGE WELL	Coliform MCL	Returned to Compliance
IL3003921 CAMP GRESHIEM CHRISTIAN RETREAT	Coliform MCL	Returned to Compliance
IL3085795 CAMP HAUBERG (85795)	Coliform MCL	Returned to Compliance
IL3085803 CAMP HAUBERG (85803)	Coliform MCL	Returned to Compliance
IL1130250 CARLOCK	Coliform MCL	Returned to Compliance
IL3000729 CEDAR CREEK (729)	Coliform MCL	Returned to Compliance
IL1615120 CHERRY DALE SUBDIVISION	Coliform MCL	Returned to Compliance
IL3115717 CHILLI DUGOUT	Coliform MCL	Enforcement in process
IL3123802 CHUBBYS CORNER	Coliform MCL	Returned to Compliance
IL0390050 CLINTON	Coliform MCL	Returned to Compliance
IL0370051 CORTLAND	Coliform MCL	Returned to Compliance
IL3085316 COUNTRY FUN INC	Coliform MCL	Returned to Compliance
IL3131227 COUNTRY RANCH	Coliform MCL	Returned to Compliance
IL1095125 COUNTRYAIRE ESTATES MHP	Coliform MCL	Returned to Compliance
IL3097584 COUNTRYSIDE BAR & GRILL	Coliform MCL	Returned to Compliance
IL1970300 CRETE	Coliform MCL	Returned to Compliance
IL0190030 D AND R APTS	Coliform MCL	Returned to Compliance
IL3138834 DAVES GOODTIME BILLIARDS	Coliform MCL	Returned to Compliance
IL3141713 DEER RUN FOREST PRESERVE	Coliform MCL	Returned to Compliance
IL1115200 DEERING OAKS SUBDIVISION	Coliform MCL	Returned to Compliance
IL0630250 DIAMOND	Coliform MCL	Returned to Compliance

Appendix B

Illinois EPA 2004 Annual Compliance

Maximum Contaminant Level and Treatment Technique Violations

Listing by Contaminant

<u>Facility Number and Name</u>	<u>Contaminant</u>	<u>Comments</u>
IL3115048 DINGERS TAP	Coliform MCL	Enforcement in process
IL3142463 DUNKERS	Coliform MCL	Returned to Compliance
IL1610140 EAST END WATER ASSOCIATION	Coliform MCL	Returned to Compliance
IL1435150 EDELSTEIN WATER COOP	Coliform MCL	Returned to Compliance
IL1795345 EDGEWOOD TRC MHP	Coliform MCL	Returned to Compliance
IL3003608 EVENING STAR CAMPGROUND (3608)	Coliform MCL	Returned to Compliance
IL3090282 FAITH BIBLE CAMP	Coliform MCL	Returned to Compliance
IL3044180 FARMERS CAFE	Coliform MCL	Returned to Compliance
IL3135293 FIRST CHURCH OF THE NAZARENE (135293)	Coliform MCL	Returned to Compliance
IL3142349 FOREST HILLS DIAMONDS	Coliform MCL	Returned to Compliance
IL3062497 FOXCROFT MEADOWS INC/JBARCHARD	Coliform MCL	Returned to Compliance
IL0310960 FRANKLIN PARK	Coliform MCL	Returned to Compliance
IL3067785 FRANS ON SEVENTEEN	Coliform MCL	Returned to Compliance
IL3136945 FREEDOM OIL COMPANY (136945)	Coliform MCL	Returned to Compliance
IL3117580 FULLER FOREST PRESERVE WELL #2	Coliform MCL	Returned to Compliance
IL3032441 FULTON COUNTY CAMPING&REC AREA	Coliform MCL	Enforcement in process
IL3083535 GLORYDALE RESORT	Coliform MCL	Returned to Compliance
IL3024596 GOLD HILLS	Coliform MCL	Returned to Compliance
IL3046516 GOLD STAR MOTEL	Coliform MCL	Returned to Compliance
IL1090250 GOOD HOPE	Coliform MCL	Returned to Compliance
IL2034450 GOODFIELD	Coliform MCL	Returned to Compliance
IL3008342 HARDING GRADE SCHOOL	Coliform MCL	Returned to Compliance

Appendix B

Illinois EPA 2004 Annual Compliance

Maximum Contaminant Level and Treatment Technique Violations

Listing by Contaminant

<u>Facility Number and Name</u>	<u>Contaminant</u>	<u>Comments</u>
IL3000513 HEND-CO-HILLS COUNTRY CLUB	Coliform MCL	Enforcement in process
IL1190550 HIGHLAND	Coliform MCL	Returned to Compliance
IL3126557 HITCHING POST BAR	Coliform MCL	Returned to Compliance
IL3053413 I-74 SPOON RIVER REST AREA	Coliform MCL	Enforcement in process
IL3103713 IDEAL HUNTING AND FISHING CLUB	Coliform MCL	Returned to Compliance
IL3141671 INDIAN HILLS FOREST PRESERVE	Coliform MCL	Returned to Compliance
IL3085837 INGERSOLL SCOUT RESERVE WELL	Coliform MCL	Returned to Compliance
IL3049296 ISLAND MARINA	Coliform MCL	Enforcement in process
IL1910020 JASPER WATERWORKS CORPORATION	Coliform MCL	Returned to Compliance
IL0830250 JERSEYVILLE	Coliform MCL	Returned to Compliance
IL1310100 JOY	Coliform MCL	Returned to Compliance
IL3124354 JUBILEE ST PK VALLEY VIEW WELL	Coliform MCL	Returned to Compliance
IL3016709 KILBUCK CREEK F P LOWER ENTRAN	Coliform MCL	Enforcement in process
IL3126904 KINGS HOUSE OF RETREAT	Coliform MCL	Enforcement in process
IL1870050 KIRKWOOD	Coliform MCL	Returned to Compliance
IL3078162 KNOX CO SPORTSMENS CLUB	Coliform MCL	Enforcement in process
IL3092981 KOPPER KETTLE KAFE (092981)	Coliform MCL	Returned to Compliance
IL3069096 LITTLE TEXAS INC	Coliform MCL	Returned to Compliance
IL3086207 LOUD THUNDER BSA A-UPPER	Coliform MCL	Returned to Compliance
IL3085902 LOUD THUNDER FOREST PRESERVE B	Coliform MCL	Returned to Compliance
IL3042713 MACS TAP	Coliform MCL	Returned to Compliance

Appendix B

Illinois EPA 2004 Annual Compliance

Maximum Contaminant Level and Treatment Technique Violations

Listing by Contaminant

<u>Facility Number and Name</u>	<u>Contaminant</u>	<u>Comments</u>
IL0230150 MARTINSVILLE	Coliform MCL	Returned to Compliance
IL3052886 MATTHIESSEN STATE PARK (52886)	Coliform MCL	Returned to Compliance
IL3045708 MC DONALDS	Coliform MCL	Returned to Compliance
IL0990550 MENDOTA	Coliform MCL	Returned to Compliance
IL3000612 MIDLAND COUNTRY CLUB	Coliform MCL	Returned to Compliance
IL1610400 MILAN	Coliform MCL	Returned to Compliance
IL3129023 MOWEQUA GOLF COURSE	Coliform MCL	Enforcement in process
IL3057703 MUSTANG SALLYS BAR & BOWL	Coliform MCL	Returned to Compliance
IL3010215 NEW CASTLE BIBLE CHURCH	Coliform MCL	Returned to Compliance
IL3085696 NEW CRYSTAL LAKE	Coliform MCL	Enforcement in process
IL3046003 NEW MILL RESTAURANT	Coliform MCL	Returned to Compliance
IL3114439 NEW MILL TAP C/O BILL RADER	Coliform MCL	Enforcement in process
IL3114439 NEW MILL TAP C/O BILL RADER	Coliform MCL	Returned to Compliance
IL1795780 NORTH TAZEWELL PWD	Coliform MCL	Returned to Compliance
IL0075275 OAK LAWN MHP	Coliform MCL	Returned to Compliance
IL1770350 ORANGEVILLE	Coliform MCL	Returned to Compliance
IL0930150 OSWEGO	Coliform MCL	Returned to Compliance
IL0971400 PARK CITY	Coliform MCL	Returned to Compliance
IL0895445 PATTERSON MHP	Coliform MCL	Returned to Compliance
IL3142380 PECATONICA WETLAND FOREST PRES	Coliform MCL	Returned to Compliance
IL3141739 PORTER PARK	Coliform MCL	Enforcement in process
IL0110850 PRINCETON	Coliform MCL	Returned to Compliance
IL3133694 PRINCETON CHRISTIAN ACADEMY	Coliform MCL	Returned to Compliance

Appendix B

Illinois EPA 2004 Annual Compliance

Maximum Contaminant Level and Treatment Technique Violations

Listing by Contaminant

<u>Facility Number and Name</u>	<u>Contaminant</u>	<u>Comments</u>
IL1615580 RAINBOW RIDGE	Coliform MCL	Returned to Compliance
IL3060764 RIGGERTS DIE SCHEUNE	Coliform MCL	Returned to Compliance
IL3125302 ROCK ISLAND TRAIL STATE PARK A	Coliform MCL	Returned to Compliance
IL3141721 ROCKFOR ROTARY FOREST PRESERVE	Coliform MCL	Returned to Compliance
IL3118174 ROLLING KNOLLS COUNTRY CLUB	Coliform MCL	Enforcement in process
IL3113555 ROLLING OAKS CAMPGROUND (113555)	Coliform MCL	Enforcement in process
IL0312790 SAUK	Coliform MCL	Returned to Compliance
IL3142190 SAVE-A-LOT (142190)	Coliform MCL	Enforcement in process
IL3122317 SENECA HUNT CLUB	Coliform MCL	Returned to Compliance
IL3046177 SEVERSON DELLS FP HANDPUMP	Coliform MCL	Returned to Compliance
IL3046375 SEWARD UPPER ELEMENTARY SCHOOL	Coliform MCL	Returned to Compliance
IL3136168 SHEFFIELD MARATHON	Coliform MCL	Enforcement in process
IL3126821 SHERIDAN ROD & GUN	Coliform MCL	Enforcement in process
IL0890750 SLEEPY HOLLOW	Coliform MCL	Returned to Compliance
IL3102327 SOLLIT TAP	Coliform MCL	Returned to Compliance
IL3108670 SPEEDWAY (108670)	Coliform MCL	Returned to Compliance
IL3036970 ST PATRICKS CHURCH	Coliform MCL	Returned to Compliance
IL3119917 STANDARD CITY TAP	Coliform MCL	Enforcement in process
IL3138750 STREATOR BAPTIST CAMP EAST WEL	Coliform MCL	Enforcement in process
IL3138750 STREATOR BAPTIST CAMP EAST WEL	Coliform MCL	Returned to Compliance
IL0735300 SUNNY HILL ESTATES SUBDIVISION	Coliform MCL	Returned to Compliance
IL2035150 TEN MILE VIEW SUBDIVISION	Coliform MCL	Returned to Compliance

Appendix B

Illinois EPA 2004 Annual Compliance

Maximum Contaminant Level and Treatment Technique Violations

Listing by Contaminant

<u>Facility Number and Name</u>	<u>Contaminant</u>	<u>Comments</u>
IL3019992 THE BACK 40 INC	Coliform MCL	Returned to Compliance
IL3129726 THE BARN	Coliform MCL	Returned to Compliance
IL3124974 THE BOURNE	Coliform MCL	Returned to Compliance
IL3000539 THE GIBSON CAMPGROUND	Coliform MCL	Enforcement in process
IL3033951 THE GREAT SAUK TRAIL - EAST	Coliform MCL	Returned to Compliance
IL3126508 THE OLD SHAMROCK	Coliform MCL	Returned to Compliance
IL2035200 TIMBERLAN SUBDIVISION	Coliform MCL	Returned to Compliance
IL3004713 TOMS LODGE	Coliform MCL	Enforcement in process
IL3004713 TOMS LODGE	Coliform MCL	Returned to Compliance
IL3004606 TRAILSIDE FOREST PRESERVE	Coliform MCL	Returned to Compliance
IL3127696 TRASK BRIDGE FOREST -HANDPUMP	Coliform MCL	Enforcement in process
IL3055590 TREMONT AMERICAN LEGION	Coliform MCL	Enforcement in process
IL3117606 TURTLE CREEK REST AREA	Coliform MCL	Returned to Compliance
IL3130666 TWO RIVERS FOREST PRESERVE	Coliform MCL	Returned to Compliance
IL3130583 TWO WHEEL INN	Coliform MCL	Enforcement in process
IL3036079 UNITED SCHOOL DISTRICT 304	Coliform MCL	Returned to Compliance
IL1115700 UTL INC-WHISPERING HILLS WATER COMPANY	Coliform MCL	Returned to Compliance
IL3138362 VILLAGE OF ROSCOE PLAYERS PARK	Coliform MCL	Enforcement in process
IL3060285 WALNUT GR UNITED METHODIST CHURCH	Coliform MCL	Enforcement in process
IL3122275 WEBBS VALLEY VIEW CAMPGROUND	Coliform MCL	Returned to Compliance
IL3137232 WEDRON SILICA SAND COMPANY	Coliform MCL	Returned to Compliance
IL0190040 YOUNGS HILLCREST MHP	Coliform MCL	Returned to Compliance

Appendix B

Illinois EPA 2004 Annual Compliance

Maximum Contaminant Level and Treatment Technique Violations

Listing by Contaminant

<u>Facility Number and Name</u>	<u>Contaminant</u>	<u>Comments</u>
IL3135731 YUMMIES	Coliform MCL	Returned to Compliance
IL1977210 AQUA ILLINOIS-OAKVIEW	Combined Radium MCL	Purchase Water
IL1035100 AQUA ILLINOIS-WOODHAVEN	Combined Radium MCL	Compliance commitment agreement / schedule approved
IL0314120 BARTLETT	Combined Radium MCL	Compliance commitment agreement / schedule approved
IL0894130 BATAVIA	Combined Radium MCL	Compliance commitment agreement / schedule approved
IL0710050 BIGGSVILLE	Combined Radium MCL	Compliance commitment agreement / schedule approved
IL1750050 BRADFORD	Combined Radium MCL	Returned to Compliance
IL0895125 BREAZEAL MHP	Combined Radium MCL	Compliance commitment agreement / schedule approved
IL0971060 BRIARCREST SBDV HOMEOWNERS ASSOCIATION	Combined Radium MCL	Returned to Compliance
IL0895149 BROADVIEW ACADEMY	Combined Radium MCL	Compliance commitment agreement / schedule approved
IL0570200 BRYANT	Combined Radium MCL	Returned to Compliance
IL0110150 BUREAU JUNCTION	Combined Radium MCL	Compliance commitment agreement / schedule approved
IL1970200 CHANNAHON	Combined Radium MCL	Returned to Compliance
IL1970070 CHANNAHON EAST	Combined Radium MCL	Purchase Water
IL1090200 COLCHESTER	Combined Radium MCL	Compliance commitment agreement / schedule approved
IL0370051 CORTLAND	Combined Radium MCL	Compliance commitment agreement / schedule approved
IL0375125 CORTLAND CORNERS MHP	Combined Radium MCL	Returned to Compliance
IL0995365 COUNTRY ACRES MHP (LA SALLE COUNTY)	Combined Radium MCL	Returned to Compliance
IL0975200 COUNTRYSIDE LAKE SUBDIVISION	Combined Radium MCL	Returned to Compliance
IL0975250 COUNTRYSIDE MANOR SUBDIVISION	Combined Radium MCL	Compliance commitment agreement / schedule approved

Appendix B

Illinois EPA 2004 Annual Compliance

Maximum Contaminant Level and Treatment Technique Violations

Listing by Contaminant

<u>Facility Number and Name</u>	<u>Contaminant</u>	<u>Comments</u>
IL0110300 DE PUE	Combined Radium MCL	Compliance commitment agreement / schedule approved
IL1030200 DIXON	Combined Radium MCL	Compliance commitment agreement / schedule approved
IL1035500 DIXON CORRECTIONAL CENTER	Combined Radium MCL	Returned to Compliance
IL1435150 EDELSTEIN WATER COOP	Combined Radium MCL	Compliance commitment agreement / schedule approved
IL0890300 ELBURN	Combined Radium MCL	Compliance commitment agreement / schedule approved
IL0975736 ELM OAK MUTUAL WATER SYSTEM	Combined Radium MCL	Pursuing a formal compliance schedule
IL0570500 FARMINGTON	Combined Radium MCL	Compliance commitment agreement / schedule approved
IL0971050 FIELDS OF LONG GROVE	Combined Radium MCL	Returned to Compliance
IL0995110 FOUR LAKES SUBDIVISION	Combined Radium MCL	Compliance commitment agreement / schedule approved
IL0730450 GALVA	Combined Radium MCL	Returned to Compliance
IL0630400 GARDNER	Combined Radium MCL	Returned to Compliance
IL0890350 GENEVA	Combined Radium MCL	Compliance commitment agreement / schedule approved
IL1430350 GLASFORD	Combined Radium MCL	Compliance commitment agreement / schedule approved
IL0990080 GLENWOOD - OUTBACK	Combined Radium MCL	CWS is Inactive
IL0975600 GRANDWOOD PARK SUBDIVISION	Combined Radium MCL	Compliance commitment agreement / schedule approved
IL1550050 GRANVILLE	Combined Radium MCL	Compliance commitment agreement / schedule approved
IL1030300 HARMON	Combined Radium MCL	Compliance commitment agreement / schedule approved
IL0975238 HEIDEN GARDENS CONDOS	Combined Radium MCL	Returned to Compliance
IL1235150 HOPEWELL	Combined Radium MCL	Compliance commitment agreement / schedule approved

Appendix B

Illinois EPA 2004 Annual Compliance

Maximum Contaminant Level and Treatment Technique Violations

Listing by Contaminant

<u>Facility Number and Name</u>	<u>Contaminant</u>	<u>Comments</u>
IL0995300 IL PRAIRIE ESTATES SUBDIVISION	Combined Radium MCL	Compliance commitment agreement / schedule approved
IL1970450 JOLIET	Combined Radium MCL	Compliance commitment agreement / schedule approved
IL1977930 JOLIET CORRECTIONAL CENTER	Combined Radium MCL	Compliance commitment agreement / schedule approved
IL1977940 KANKAKEE CORRECTIONAL CENTER	Combined Radium MCL	Compliance commitment agreement / schedule approved
IL0730650 KEWANEE	Combined Radium MCL	Compliance commitment agreement / schedule approved
IL1430450 KINGSTON MINES	Combined Radium MCL	Compliance commitment agreement / schedule approved
IL0630450 KINSMAN	Combined Radium MCL	Compliance commitment agreement / schedule approved
IL0950300 KNOXVILLE	Combined Radium MCL	Returned to Compliance
IL0995329 LA SALLE COUNTY NURSING HOME	Combined Radium MCL	Returned to Compliance
IL0110450 LADD	Combined Radium MCL	Returned to Compliance
IL0970850 LAKE ZURICH	Combined Radium MCL	Compliance commitment agreement / schedule approved
IL1955150 LAKEVIEW HILLS WATER SUPPLY COMPANY	Combined Radium MCL	Compliance commitment agreement / schedule approved
IL1870100 LITTLE YORK	Combined Radium MCL	Compliance commitment agreement / schedule approved
IL0990450 LOSTANT	Combined Radium MCL	Returned to Compliance
IL2010150 LOVES PARK	Combined Radium MCL	Compliance commitment agreement / schedule approved
IL0995336 LYNNWOOD WATER CORPORATION	Combined Radium MCL	Compliance commitment agreement / schedule approved
IL1970550 MANHATTAN	Combined Radium MCL	Returned to Compliance
IL0890500 MAPLE PARK	Combined Radium MCL	Returned to Compliance
IL1430500 MAPLETON	Combined Radium MCL	Returned to Compliance

Appendix B

Illinois EPA 2004 Annual Compliance

Maximum Contaminant Level and Treatment Technique Violations

Listing by Contaminant

<u>Facility Number and Name</u>	<u>Contaminant</u>	<u>Comments</u>
IL0895285 MARGARETS HI-ACRE MHP	Combined Radium MCL	Returned to Compliance
IL1550250 MARK	Combined Radium MCL	Returned to Compliance
IL0990500 MARSEILLES	Combined Radium MCL	Compliance commitment agreement / schedule approved
IL0990110 MARSEILLES SOUTH	Combined Radium MCL	Enforcement in process
IL0990550 MENDOTA	Combined Radium MCL	Compliance commitment agreement / schedule approved
IL1870150 MONMOUTH	Combined Radium MCL	Compliance commitment agreement / schedule approved
IL0895319 MOOSEHEART	Combined Radium MCL	Compliance commitment agreement / schedule approved
IL0935140 MORGAN CREEK	Combined Radium MCL	Compliance commitment agreement / schedule approved
IL0150200 MOUNT CARROLL	Combined Radium MCL	Compliance commitment agreement / schedule approved
IL1410350 MOUNT MORRIS	Combined Radium MCL	Compliance commitment agreement / schedule approved
IL0990600 NAPLATE	Combined Radium MCL	Compliance commitment agreement / schedule approved
IL0110700 NEPONSET	Combined Radium MCL	Compliance commitment agreement / schedule approved
IL0890600 NORTH AURORA	Combined Radium MCL	Compliance commitment agreement / schedule approved
IL1550010 OAK PARK ESTATES	Combined Radium MCL	Purchase Water
IL1410400 OREGON	Combined Radium MCL	Returned to Compliance
IL0930150 OSWEGO	Combined Radium MCL	Compliance commitment agreement / schedule approved
IL1570350 PERCY	Combined Radium MCL	Compliance commitment agreement / schedule approved
IL1970800 PLAINFIELD	Combined Radium MCL	Returned to Compliance
IL0630060 PRAIRIE OAKS ESTS HOMEOWNERS ASSN	Combined Radium MCL	Enforcement in Process

Appendix B

Illinois EPA 2004 Annual Compliance

Maximum Contaminant Level and Treatment Technique Violations

Listing by Contaminant

<u>Facility Number and Name</u>	<u>Contaminant</u>	<u>Comments</u>
IL0970320 PROMONTORY POINTE HOMEOWNERS ASSOCIATION	Combined Radium MCL	Compliance commitment agreement / schedule approved
IL0971100 PROVIDENCE AT PAINTED LAKES	Combined Radium MCL	Compliance commitment agreement / schedule approved
IL0990900 RANSOM	Combined Radium MCL	Compliance commitment agreement / schedule approved
IL0914780 REDDICK	Combined Radium MCL	Compliance commitment agreement / schedule approved
IL1970850 ROCKDALE	Combined Radium MCL	Compliance commitment agreement / schedule approved
IL2010300 ROCKFORD	Combined Radium MCL	Compliance commitment agreement / schedule approved
IL1970900 ROMEOVILLE	Combined Radium MCL	Compliance commitment agreement / schedule approved
IL0970170 ROYAL MELBOURNE HOMEOWNERS ASN	Combined Radium MCL	Returned to Compliance
IL0991050 SENECA	Combined Radium MCL	Compliance commitment agreement / schedule approved
IL0635225 SHADY OAKS MHP	Combined Radium MCL	Returned to Compliance
IL0890040 SILVER GLEN ESTS	Combined Radium MCL	Compliance commitment agreement / schedule approved
IL0630650 SOUTH WILMINGTON	Combined Radium MCL	Returned to Compliance
IL0111000 SPRING VALLEY	Combined Radium MCL	Returned to Compliance
IL1550300 STANDARD	Combined Radium MCL	Compliance commitment agreement / schedule approved
IL1570650 STEELEVILLE	Combined Radium MCL	Returned to Compliance
IL0310080 SUNSET MHP	Combined Radium MCL	Compliance commitment agreement / schedule approved
IL0370550 SYCAMORE	Combined Radium MCL	Compliance commitment agreement / schedule approved
IL0970310 THE PRESERVE AT LONG GROVE	Combined Radium MCL	Compliance commitment agreement / schedule approved
IL0317765 TOUHY MHP	Combined Radium MCL	Compliance commitment agreement / schedule approved

Appendix B

Illinois EPA 2004 Annual Compliance

Maximum Contaminant Level and Treatment Technique Violations

Listing by Contaminant

<u>Facility Number and Name</u>	<u>Contaminant</u>	<u>Comments</u>
IL1975200 UTL INC-CAMELOT UTILITIES, INC.	Combined Radium MCL	Returned to Compliance
IL2015160 UTL INC-COVENTRY CREEK SUBDIVISION	Combined Radium MCL	Compliance commitment agreement / schedule approved
IL1310450 VIOLA	Combined Radium MCL	Compliance commitment agreement / schedule approved
IL0971770 VOLO	Combined Radium MCL	Compliance commitment agreement / schedule approved
IL0890110 WASCO SD	Combined Radium MCL	Compliance commitment agreement / schedule approved
IL0430900 WEST CHICAGO	Combined Radium MCL	Compliance commitment agreement / schedule approved
IL0977370 WEST SHORE PARK SUBDIVISION	Combined Radium MCL	Returned to Compliance
IL0990060 WHISPERING PINES MHP	Combined Radium MCL	Compliance commitment agreement / schedule approved
IL0995425 WILDLIFE MHP	Combined Radium MCL	Compliance commitment agreement / schedule approved
IL0990030 WOODSMOKE RANCH ASSOCIATION	Combined Radium MCL	Compliance commitment agreement / schedule approved
IL0970080 WYNSTONE WATER COMPANY	Combined Radium MCL	Compliance commitment agreement / schedule approved
IL0930250 YORKVILLE	Combined Radium MCL	Compliance commitment agreement / schedule approved
IL1550300 STANDARD	Dichloromethane MCL	Returned to Compliance
IL1570250 EVANSVILLE	Failure to Profile TT	Pursuing a formal compliance schedule
IL1210400 PATOKA	Failure to Profile TT	Compliance commitment agreement / schedule approved
IL1977210 AQUA ILLINOIS-OAKVIEW	Gross Alpha MCL	Purchase Water
IL0894130 BATAVIA	Gross Alpha MCL	Compliance commitment agreement / schedule approved
IL0710050 BIGGSVILLE	Gross Alpha MCL	Compliance commitment agreement / schedule approved

Appendix B

Illinois EPA 2004 Annual Compliance

Maximum Contaminant Level and Treatment Technique Violations

Listing by Contaminant

<u>Facility Number and Name</u>	<u>Contaminant</u>	<u>Comments</u>
IL1750050 BRADFORD	Gross Alpha MCL	Returned to Compliance
IL0971060 BRIARCREST SBDV HOMEOWNERS ASSOCIATION	Gross Alpha MCL	Returned to Compliance
IL0570200 BRYANT	Gross Alpha MCL	Returned to Compliance
IL0110150 BUREAU JUNCTION	Gross Alpha MCL	Returned to Compliance
IL1090150 BUSHNELL	Gross Alpha MCL	Returned to Compliance
IL0730300 CAMBRIDGE	Gross Alpha MCL	Returned to Compliance
IL1970070 CHANNAHON EAST	Gross Alpha MCL	Purchase Water
IL1090200 COLCHESTER	Gross Alpha MCL	Returned to Compliance
IL0995365 COUNTRY ACRES MHP (LA SALLE COUNTY)	Gross Alpha MCL	Returned to Compliance
IL0975250 COUNTRYSIDE MANOR SUBDIVISION	Gross Alpha MCL	Returned to Compliance
IL0110300 DE PUE	Gross Alpha MCL	Compliance commitment agreement / schedule approved
IL1030200 DIXON	Gross Alpha MCL	Compliance commitment agreement / schedule approved
IL1435150 EDELSTEIN WATER COOP	Gross Alpha MCL	Compliance commitment agreement / schedule approved
IL0890300 ELBURN	Gross Alpha MCL	Compliance commitment agreement / schedule approved
IL0995110 FOUR LAKES SUBDIVISION	Gross Alpha MCL	Returned to Compliance
IL0730450 GALVA	Gross Alpha MCL	Returned to Compliance
IL0630400 GARDNER	Gross Alpha MCL	Returned to Compliance
IL1430350 GLASFORD	Gross Alpha MCL	Compliance commitment agreement / schedule approved
IL0990080 GLENWOOD - OUTBACK	Gross Alpha MCL	CWS is Inactive
IL1550050 GRANVILLE	Gross Alpha MCL	Compliance commitment agreement / schedule approved
IL1030300 HARMON	Gross Alpha MCL	Returned to Compliance
IL0975238 HEIDEN GARDENS CONDOS	Gross Alpha MCL	Returned to Compliance

Appendix B

Illinois EPA 2004 Annual Compliance

Maximum Contaminant Level and Treatment Technique Violations

Listing by Contaminant

<u>Facility Number and Name</u>	<u>Contaminant</u>	<u>Comments</u>
IL1235150 HOPEWELL	Gross Alpha MCL	Compliance commitment agreement / schedule approved
IL0995300 IL PRAIRIE ESTATES SUBDIVISION	Gross Alpha MCL	Compliance commitment agreement / schedule approved
IL1970450 JOLIET	Gross Alpha MCL	Compliance commitment agreement / schedule approved
IL1977930 JOLIET CORRECTIONAL CENTER	Gross Alpha MCL	Compliance commitment agreement / schedule approved
IL0730650 KEWANEE	Gross Alpha MCL	Compliance commitment agreement / schedule approved
IL1430450 KINGSTON MINES	Gross Alpha MCL	Compliance commitment agreement / schedule approved
IL0950300 KNOXVILLE	Gross Alpha MCL	Returned to Compliance
IL0970850 LAKE ZURICH	Gross Alpha MCL	Returned to Compliance
IL1870100 LITTLE YORK	Gross Alpha MCL	Compliance commitment agreement / schedule approved
IL0990450 LOSTANT	Gross Alpha MCL	Returned to Compliance
IL1430500 MAPLETON	Gross Alpha MCL	Returned to Compliance
IL1550250 MARK	Gross Alpha MCL	Returned to Compliance
IL1870150 MONMOUTH	Gross Alpha MCL	Compliance commitment agreement / schedule approved
IL0110700 NEPONSET	Gross Alpha MCL	Returned to Compliance
IL0890600 NORTH AURORA	Gross Alpha MCL	Returned to Compliance
IL1550010 OAK PARK ESTATES	Gross Alpha MCL	Purchase Water
IL0930150 OSWEGO	Gross Alpha MCL	Returned to Compliance
IL0630060 PRAIRIE OAKS ESTS HOMEOWNERS ASSN	Gross Alpha MCL	Enforcement in Process
IL0970320 PROMONTORY POINTE HOMEOWNERS ASSOCIATION	Gross Alpha MCL	Compliance commitment agreement / schedule approved
IL0914780 REDDICK	Gross Alpha MCL	Returned to Compliance
IL1610700 SILVIS	Gross Alpha MCL	Returned to Compliance

Appendix B

Illinois EPA 2004 Annual Compliance

Maximum Contaminant Level and Treatment Technique Violations

Listing by Contaminant

<u>Facility Number and Name</u>	<u>Contaminant</u>	<u>Comments</u>
IL0630650 SOUTH WILMINGTON	Gross Alpha MCL	Returned to Compliance
IL1550300 STANDARD	Gross Alpha MCL	Compliance commitment agreement / schedule approved
IL0317765 TOUHY MHP	Gross Alpha MCL	Compliance commitment agreement / schedule approved
IL1310450 VIOLA	Gross Alpha MCL	Compliance commitment agreement / schedule approved
IL0430900 WEST CHICAGO	Gross Alpha MCL	Compliance commitment agreement / schedule approved
IL0990060 WHISPERING PINES MHP	Gross Alpha MCL	Compliance commitment agreement / schedule approved
IL0990030 WOODSMOKE RANCH ASSOCIATION	Gross Alpha MCL	Returned to Compliance
IL0930250 YORKVILLE	Gross Alpha MCL	Compliance commitment agreement / schedule approved
IL1170150 CARLINVILLE	Inadequate DBP Precursor Removal TT	Pursuing a formal compliance schedule
IL1210300 KINMUNDY	Inadequate DBP Precursor Removal TT	Pursuing a formal compliance schedule
IL1995200 LAKE OF EGYPT PWD	Inadequate DBP Precursor Removal TT	Returned to Compliance
IL0910020 LAKE SHANNON	Inadequate DBP Precursor Removal TT	Pursuing a formal compliance schedule
IL1670800 NEW BERLIN	Inadequate DBP Precursor Removal TT	Pursuing a formal compliance schedule
IL1175150 PALMYRA-MODESTO WATER COMMISSION	Inadequate DBP Precursor Removal TT	Pursuing a formal compliance schedule
IL0210500 PANA	Inadequate DBP Precursor Removal TT	Pursuing a formal compliance schedule
IL1210400 PATOKA	Inadequate DBP Precursor Removal TT	Returned to Compliance
IL1615387 ROCK ISLAND ARSENAL	Inadequate DBP Precursor Removal TT	Pursuing a formal compliance schedule

Appendix B

Illinois EPA 2004 Annual Compliance

Maximum Contaminant Level and Treatment Technique Violations

Listing by Contaminant

<u>Facility Number and Name</u>	<u>Contaminant</u>	<u>Comments</u>
IL1171050 STAUNTON	Inadequate DBP Precursor Removal TT	Pursuing a formal compliance schedule
IL0875510 VIENNA CORRECTIONAL CENTER	Inadequate DBP Precursor Removal TT	Pursuing a formal compliance schedule
IL1210300 KINMUNDY	Insufficient Inactivation TT	Pursuing a formal compliance schedule
IL1171050 STAUNTON	Insufficient Inactivation TT	Pursuing a formal compliance schedule
IL1990200 COLP	Lead Public Education TT	Enforcement in process
IL1115250 EASTWOOD MANOR WATER COMPANY	Lead Public Education TT	Enforcement in process
IL0315750 GOLF GREENWOOD IMPROVEMENT ASSOCIATION	Lead Public Education TT	Returned to Compliance
IL1170500 HETTICK	Lead Public Education TT	Returned to Compliance
IL1035269 NACHUSA LUTHERAN HOME	Lead Public Education TT	Returned to Compliance
IL0312490 PHOENIX	Lead Public Education TT	Returned to Compliance
IL0010600 PLAINVILLE	Lead Public Education TT	Returned to Compliance
IL0975950 RAND ESTS SBDV	Lead Public Education TT	Returned to Compliance
IL0971170 UNIVERSITY ST MARY OF THE LAKE	Lead Public Education TT	Returned to Compliance
IL0975370 UTL INC-DEL-MAR WATER COMPANY	Lead Public Education TT	Returned to Compliance
IL1615130 WATER WERKS	Lead Public Education TT	Returned to Compliance
IL0955100 WESTPORT WATER MUTUAL	Lead Public Education TT	Returned to Compliance
IL0270300 CARLYLE	Monthly Combined Filter Effluent TT	Returned to Compliance
IL3044180 FARMERS CAFE	Nitrate MCL	Returned to Compliance
IL1070450 NEW HOLLAND	Nitrate MCL	Returned to Compliance
IL0275250 ST ROSE PWD	Nitrate MCL	Returned to Compliance
IL0450100 CHRISMAN	Nitrite MCL	Returned to Compliance
IL1815150 ALTO PASS WATER DISTRICT	Total Haloacetic Acids MCL	Compliance commitment agreement / schedule approved

Appendix B

Illinois EPA 2004 Annual Compliance

Maximum Contaminant Level and Treatment Technique Violations

Listing by Contaminant

<u>Facility Number and Name</u>	<u>Contaminant</u>	<u>Comments</u>
IL1170040 CENTRAL MACOUPIN COUNTY RWD	Total Haloacetic Acids MCL	Compliance commitment agreement / schedule approved
IL1170040 CENTRAL MACOUPIN COUNTY RWD	Total Haloacetic Acids MCL	Returned to Compliance
IL1130400 COOKSVILLE	Total Haloacetic Acids MCL	Compliance commitment agreement / schedule approved
IL3066886 DUNDEE MIDDLE SCHOOL	Total Haloacetic Acids MCL	Returned to Compliance
IL1170300 EAGERVILLE	Total Haloacetic Acids MCL	Compliance commitment agreement / schedule approved
IL1330150 HECKER	Total Haloacetic Acids MCL	Returned to Compliance
IL3064824 MC HENRY CO COLLEGE/S SELCKE	Total Haloacetic Acids MCL	Enforcement in process
IL1830600 OAKWOOD	Total Haloacetic Acids MCL	Compliance commitment agreement / schedule approved
IL3005413 ROOKS CREEK ELEMENTARY SCHOOL	Total Haloacetic Acids MCL	Enforcement in process
IL1815150 ALTO PASS WATER DISTRICT	Total Trihalomethane MCL	Compliance commitment agreement / schedule approved
IL3113423 CATERPILLAR INC/UTIL ENG SUPT	Total Trihalomethane MCL	Enforcement in process
IL1170040 CENTRAL MACOUPIN COUNTY RWD	Total Trihalomethane MCL	Compliance commitment agreement / schedule approved
IL1130400 COOKSVILLE	Total Trihalomethane MCL	Compliance commitment agreement / schedule approved
IL0054360 DONNELSON	Total Trihalomethane MCL	Compliance commitment agreement / schedule approved
IL3066886 DUNDEE MIDDLE SCHOOL	Total Trihalomethane MCL	Returned to Compliance
IL0250010 IOLA	Total Trihalomethane MCL	Compliance commitment agreement / schedule approved
IL3064824 MC HENRY CO COLLEGE/S SELCKE	Total Trihalomethane MCL	Enforcement in process
IL0054720 PANAMA	Total Trihalomethane MCL	Compliance commitment agreement / schedule approved

Appendix B

Illinois EPA 2004 Annual Compliance

Maximum Contaminant Level and Treatment Technique Violations

Listing by Contaminant

<u>Facility Number and Name</u>	<u>Contaminant</u>	<u>Comments</u>
IL1490750 PITTSFIELD	Total Trihalomethane MCL	Compliance commitment agreement / schedule approved
IL3005413 ROOKS CREEK ELEMENTARY SCHOOL	Total Trihalomethane MCL	Enforcement in process
IL0050250 SMITHBORO	Total Trihalomethane MCL	Compliance commitment agreement / schedule approved
IL1171050 STAUNTON	Total Trihalomethane MCL	Compliance commitment agreement / schedule approved
IL1910010 WESTERN WAYNE WATER DISTRICT	Total Trihalomethane MCL	Pursuing a formal compliance schedule
IL1830050 ALVAN	Water Quality Parameter (Lead/Copper) TT	Returned to Compliance
IL1615170 CEDAR BROOK ESTATES SUBDIVISION	Water Quality Parameter (Lead/Copper) TT	Monitoring ongoing
IL0830200 GRAFTON	Water Quality Parameter (Lead/Copper) TT	Returned to Compliance
IL0850020 LONGHOLLOW POINT	Water Quality Parameter (Lead/Copper) TT	Returned to Compliance
IL1330200 MAEYSTOWN	Water Quality Parameter (Lead/Copper) TT	Returned to Compliance
IL0314860 STEGER	Water Quality Parameter (Lead/Copper) TT	Returned to Compliance

Appendix C

The attached report identifies all public water supplies with maximum contaminant level and treatment technique violations in system name alpha order.

Appendix C

Illinois EPA 2004 Annual Compliance

Maximum Contaminant Level and Treatment Technique Violations

Listing by Water Supply

<u>Facility Number and Name</u>	<u>Contaminant</u>	<u>Comments</u>
IL0015350 ABS WATER COOP	Coliform MCL	Returned to Compliance
IL0975020 ACORN ACRES SUBDIVISION	Coliform MCL	Returned to Compliance
IL3086124 ALLENDALE CONSERVATION CLUB (86124)	Coliform MCL	Returned to Compliance
IL3086132 ALLENDALE CONSERVATION CLUB (86132)	Coliform MCL	Returned to Compliance
IL1815150 ALTO PASS WATER DISTRICT	Total Haloacetic Acids MCL	Compliance commitment agreement / schedule approved
IL1815150 ALTO PASS WATER DISTRICT	Total Trihalomethane MCL	Compliance commitment agreement / schedule approved
IL1830050 ALVAN	Water Quality Parameter (Lead/Copper) TT	Returned to Compliance
IL1370040 APPLE CREEK WATER COOP	Coliform (Acute) MCL	Returned to Compliance
IL1370040 APPLE CREEK WATER COOP	Coliform MCL	Returned to Compliance
IL0850050 APPLE RIVER	Coliform MCL	Returned to Compliance
IL1977210 AQUA ILLINOIS-OAKVIEW	Combined Radium MCL	Purchase Water
IL1977210 AQUA ILLINOIS-OAKVIEW	Gross Alpha MCL	Purchase Water
IL1035100 AQUA ILLINOIS-WOODHAVEN	Combined Radium MCL	Compliance commitment agreement / schedule approved
IL0170100 ASHLAND	Atrazine MCL	Returned to Compliance
IL3016485 ATWOOD HOMESTEAD OLD SETTLERHP	Coliform MCL	Enforcement in process
IL3016691 ATWOOD HOMESTEAD S PICNIC	Coliform MCL	Enforcement in process
IL3016527 ATWOOD HOMESTEAD WILL GROVE HP	Coliform MCL	Enforcement in process
IL0894070 AURORA	Coliform (Acute) MCL	Returned to Compliance
IL1090050 BARDOLPH	Coliform MCL	Returned to Compliance
IL0314120 BARTLETT	Combined Radium MCL	Compliance commitment agreement / schedule approved

Appendix C

Illinois EPA 2004 Annual Compliance

Maximum Contaminant Level and Treatment Technique Violations

Listing by Water Supply

<u>Facility Number and Name</u>	<u>Contaminant</u>	<u>Comments</u>
IL0894130 BATAVIA	Combined Radium MCL	Compliance commitment agreement / schedule approved
IL0894130 BATAVIA	Gross Alpha MCL	Compliance commitment agreement / schedule approved
IL0710050 BIGGSVILLE	Combined Radium MCL	Compliance commitment agreement / schedule approved
IL0710050 BIGGSVILLE	Gross Alpha MCL	Compliance commitment agreement / schedule approved
IL3132472 BOXERS AND BRIEFS	Coliform MCL	Enforcement in process
IL1750050 BRADFORD	Combined Radium MCL	Returned to Compliance
IL1750050 BRADFORD	Gross Alpha MCL	Returned to Compliance
IL0895125 BREAZEALE MHP	Combined Radium MCL	Compliance commitment agreement / schedule approved
IL0971060 BRIARCREST SBDV HOMEOWNERS ASSOCIATION	Combined Radium MCL	Returned to Compliance
IL0971060 BRIARCREST SBDV HOMEOWNERS ASSOCIATION	Gross Alpha MCL	Returned to Compliance
IL3142570 BRIMFIELD EVANGELICAL CHURCH	Coliform MCL	Returned to Compliance
IL0895149 BROADVIEW ACADEMY	Combined Radium MCL	Compliance commitment agreement / schedule approved
IL0570200 BRYANT	Combined Radium MCL	Returned to Compliance
IL0570200 BRYANT	Gross Alpha MCL	Returned to Compliance
IL0110150 BUREAU JUNCTION	Combined Radium MCL	Compliance commitment agreement / schedule approved
IL0110150 BUREAU JUNCTION	Gross Alpha MCL	Returned to Compliance
IL1090150 BUSHNELL	Gross Alpha MCL	Returned to Compliance
IL3117523 CACTUS COUNTRY	Coliform MCL	Returned to Compliance
IL0730300 CAMBRIDGE	Gross Alpha MCL	Returned to Compliance
IL1695100 CAMDEN-LITTLETON WATER COMMISSION	Coliform MCL	Returned to Compliance

Appendix C

Illinois EPA 2004 Annual Compliance

Maximum Contaminant Level and Treatment Technique Violations

Listing by Water Supply

<u>Facility Number and Name</u>	<u>Contaminant</u>	<u>Comments</u>
IL3142620 CAMP AKITA BATHHOUSE WELL	Coliform MCL	Enforcement in process
IL3142638 CAMP AKITA LODGE WELL	Coliform MCL	Returned to Compliance
IL3003921 CAMP GRESHIEM CHRISTIAN RETREA	Coliform MCL	Returned to Compliance
IL3085795 CAMP HAUBERG (85795)	Coliform MCL	Returned to Compliance
IL3085803 CAMP HAUBERG (85803)	Coliform (Acute) MCL	Enforcement in process
IL3085803 CAMP HAUBERG (85803)	Coliform MCL	Returned to Compliance
IL1170150 CARLINVILLE	Inadequate DBP Precursor Removal TT	Pursuing a formal compliance schedule
IL1130250 CARLOCK	Coliform MCL	Returned to Compliance
IL0270300 CARLYLE	Monthly Combined Filter Effluent TT	Returned to Compliance
IL3113423 CATERPILLAR INC/UTIL ENG SUPT	Total Trihalomethane MCL	Enforcement in process
IL1615170 CEDAR BROOK ESTATES SUBDIVISION	Water Quality Parameter (Lead/Copper) TT	Monitoring ongoing
IL3000729 CEDAR CREEK (729)	Coliform MCL	Returned to Compliance
IL1170040 CENTRAL MACOUPIN COUNTY RWD	Total Haloacetic Acids MCL	Compliance commitment agreement / schedule approved
IL1170040 CENTRAL MACOUPIN COUNTY RWD	Total Haloacetic Acids MCL	Returned to Compliance
IL1170040 CENTRAL MACOUPIN COUNTY RWD	Total Trihalomethane MCL	Compliance commitment agreement / schedule approved
IL1970200 CHANNAHON	Combined Radium MCL	Returned to Compliance
IL1970070 CHANNAHON EAST	Combined Radium MCL	Purchase Water
IL1970070 CHANNAHON EAST	Gross Alpha MCL	Purchase Water
IL1615120 CHERRY DALE SUBDIVISION	Coliform MCL	Returned to Compliance
IL3115717 CHILLI DUGOUT	Coliform MCL	Enforcement in process

Appendix C

Illinois EPA 2004 Annual Compliance

Maximum Contaminant Level and Treatment Technique Violations

Listing by Water Supply

<u>Facility Number and Name</u>	<u>Contaminant</u>	<u>Comments</u>
IL0450100 CHRISMAN	Nitrite MCL	Returned to Compliance
IL3123802 CHUBBYS CORNER	Coliform MCL	Returned to Compliance
IL0390050 CLINTON	Coliform MCL	Returned to Compliance
IL1090200 COLCHESTER	Combined Radium MCL	Compliance commitment agreement / schedule approved
IL1090200 COLCHESTER	Gross Alpha MCL	Returned to Compliance
IL1990200 COLP	Lead Public Education TT	Enforcement in process
IL1130400 COOKSVILLE	Total Haloacetic Acids MCL	Compliance commitment agreement / schedule approved
IL1130400 COOKSVILLE	Total Trihalomethane MCL	Compliance commitment agreement / schedule approved
IL0370051 CORTLAND	Coliform MCL	Returned to Compliance
IL0370051 CORTLAND	Combined Radium MCL	Compliance commitment agreement / schedule approved
IL0375125 CORTLAND CORNERS MHP	Combined Radium MCL	Returned to Compliance
IL0995365 COUNTRY ACRES MHP (LA SALLE COUNTY)	Combined Radium MCL	Returned to Compliance
IL0995365 COUNTRY ACRES MHP (LA SALLE COUNTY)	Gross Alpha MCL	Returned to Compliance
IL3085316 COUNTRY FUN INC	Coliform MCL	Returned to Compliance
IL3131227 COUNTRY RANCH	Coliform MCL	Returned to Compliance
IL1095125 COUNTRYAIRE ESTATES MHP	Coliform MCL	Returned to Compliance
IL3097584 COUNTRYSIDE BAR & GRILL	Coliform MCL	Returned to Compliance
IL0975200 COUNTRYSIDE LAKE SUBDIVISION	Combined Radium MCL	Returned to Compliance
IL0975250 COUNTRYSIDE MANOR SUBDIVISION	Combined Radium MCL	Compliance commitment agreement / schedule approved
IL0975250 COUNTRYSIDE MANOR SUBDIVISION	Gross Alpha MCL	Returned to Compliance

Appendix C

Illinois EPA 2004 Annual Compliance

Maximum Contaminant Level and Treatment Technique Violations

Listing by Water Supply

<u>Facility Number and Name</u>	<u>Contaminant</u>	<u>Comments</u>
IL1970300 CRETE	Coliform MCL	Returned to Compliance
IL0190030 D AND R APTS	Coliform MCL	Returned to Compliance
IL3138834 DAVES GOODTIME BILLIARDS	Coliform MCL	Returned to Compliance
IL0110300 DE PUE	Combined Radium MCL	Compliance commitment agreement / schedule approved
IL0110300 DE PUE	Gross Alpha MCL	Compliance commitment agreement / schedule approved
IL3141713 DEER RUN FOREST PRESERVE	Coliform MCL	Returned to Compliance
IL1115200 DEERING OAKS SUBDIVISION	Coliform MCL	Returned to Compliance
IL0630250 DIAMOND	Coliform MCL	Returned to Compliance
IL3115048 DINGERS TAP	Coliform MCL	Enforcement in process
IL1030200 DIXON	Combined Radium MCL	Compliance commitment agreement / schedule approved
IL1030200 DIXON	Gross Alpha MCL	Compliance commitment agreement / schedule approved
IL1035500 DIXON CORRECTIONAL CENTER	Combined Radium MCL	Returned to Compliance
IL0054360 DONNELLSON	Total Trihalomethane MCL	Compliance commitment agreement / schedule approved
IL3066886 DUNDEE MIDDLE SCHOOL	Total Haloacetic Acids MCL	Returned to Compliance
IL3066886 DUNDEE MIDDLE SCHOOL	Total Trihalomethane MCL	Returned to Compliance
IL3142463 DUNKERS	Coliform MCL	Returned to Compliance
IL1170300 EAGERVILLE	Total Haloacetic Acids MCL	Compliance commitment agreement / schedule approved
IL1610140 EAST END WATER ASSOCIATION	Coliform MCL	Returned to Compliance
IL1115250 EASTWOOD MANOR WATER COMPANY	Lead Public Education TT	Enforcement in process
IL1435150 EDELSTEIN WATER COOP	Coliform MCL	Returned to Compliance

Appendix C

Illinois EPA 2004 Annual Compliance

Maximum Contaminant Level and Treatment Technique Violations

Listing by Water Supply

<u>Facility Number and Name</u>	<u>Contaminant</u>	<u>Comments</u>
IL1435150 EDELSTEIN WATER COOP	Combined Radium MCL	Compliance commitment agreement / schedule approved
IL1435150 EDELSTEIN WATER COOP	Gross Alpha MCL	Compliance commitment agreement / schedule approved
IL1795345 EDGEWOOD TRC MHP	Coliform MCL	Returned to Compliance
IL0890300 ELBURN	Combined Radium MCL	Compliance commitment agreement / schedule approved
IL0890300 ELBURN	Gross Alpha MCL	Compliance commitment agreement / schedule approved
IL0975736 ELM OAK MUTUAL WATER SYSTEM	Combined Radium MCL	Pursuing a formal compliance schedule
IL1570250 EVANSVILLE	Failure to Profile TT	Pursuing a formal compliance schedule
IL3003608 EVENING STAR CAMPGROUND (3608)	Coliform MCL	Returned to Compliance
IL3090282 FAITH BIBLE CAMP	Coliform MCL	Returned to Compliance
IL3044180 FARMERS CAFE	Coliform MCL	Returned to Compliance
IL3044180 FARMERS CAFE	Nitrate MCL	Returned to Compliance
IL0570500 FARMINGTON	Combined Radium MCL	Compliance commitment agreement / schedule approved
IL0971050 FIELDS OF LONG GROVE	Combined Radium MCL	Returned to Compliance
IL3135293 FIRST CHURCH OF THE NAZARENE (135293)	Coliform MCL	Returned to Compliance
IL3142349 FOREST HILLS DIAMONDS	Coliform MCL	Returned to Compliance
IL0995110 FOUR LAKES SUBDIVISION	Combined Radium MCL	Compliance commitment agreement / schedule approved
IL0995110 FOUR LAKES SUBDIVISION	Gross Alpha MCL	Returned to Compliance
IL3062497 FOXCROFT MEADOWS INC/JBARCHARD	Coliform MCL	Returned to Compliance
IL0310960 FRANKLIN PARK	Coliform MCL	Returned to Compliance
IL3067785 FRANS ON SEVENTEEN	Coliform MCL	Returned to Compliance

Appendix C

Illinois EPA 2004 Annual Compliance

Maximum Contaminant Level and Treatment Technique Violations

Listing by Water Supply

<u>Facility Number and Name</u>	<u>Contaminant</u>	<u>Comments</u>
IL3136945 FREEDOM OIL COMPANY (136945)	Coliform MCL	Returned to Compliance
IL3117580 FULLER FOREST PRESERVE WELL #2	Coliform MCL	Returned to Compliance
IL3032441 FULTON COUNTY CAMPING&REC AREA	Coliform MCL	Enforcement in process
IL0730450 GALVA	Combined Radium MCL	Returned to Compliance
IL0730450 GALVA	Gross Alpha MCL	Returned to Compliance
IL0630400 GARDNER	Combined Radium MCL	Returned to Compliance
IL0630400 GARDNER	Gross Alpha MCL	Returned to Compliance
IL0890350 GENEVA	Combined Radium MCL	Compliance commitment agreement / schedule approved
IL1430350 GLASFORD	Combined Radium MCL	Compliance commitment agreement / schedule approved
IL1430350 GLASFORD	Gross Alpha MCL	Compliance commitment agreement / schedule approved
IL0990080 GLENWOOD - OUTBACK	Combined Radium MCL	CWS is Inactive
IL0990080 GLENWOOD - OUTBACK	Gross Alpha MCL	CWS is Inactive
IL3083535 GLORYDALE RESORT	Coliform MCL	Returned to Compliance
IL3024596 GOLD HILLS	Coliform MCL	Returned to Compliance
IL3046516 GOLD STAR MOTEL	Coliform MCL	Returned to Compliance
IL0315750 GOLF GREENWOOD IMPROVEMENT ASSOCIATION	Lead Public Education TT	Returned to Compliance
IL1090250 GOOD HOPE	Coliform MCL	Returned to Compliance
IL2034450 GOODFIELD	Coliform MCL	Returned to Compliance
IL0830200 GRAFTON	Water Quality Parameter (Lead/Copper) TT	Returned to Compliance
IL0975600 GRANDWOOD PARK SUBDIVISION	Combined Radium MCL	Compliance commitment agreement / schedule approved

Appendix C

Illinois EPA 2004 Annual Compliance

Maximum Contaminant Level and Treatment Technique Violations

Listing by Water Supply

<u>Facility Number and Name</u>	<u>Contaminant</u>	<u>Comments</u>
IL1550050 GRANVILLE	Combined Radium MCL	Compliance commitment agreement / schedule approved
IL1550050 GRANVILLE	Gross Alpha MCL	Compliance commitment agreement / schedule approved
IL3008342 HARDING GRADE SCHOOL	Coliform MCL	Returned to Compliance
IL1030300 HARMON	Combined Radium MCL	Compliance commitment agreement / schedule approved
IL1030300 HARMON	Gross Alpha MCL	Returned to Compliance
IL1330150 HECKER	Total Haloacetic Acids MCL	Returned to Compliance
IL0975238 HEIDEN GARDENS CONDOS	Combined Radium MCL	Returned to Compliance
IL0975238 HEIDEN GARDENS CONDOS	Gross Alpha MCL	Returned to Compliance
IL3000513 HEND-CO-HILLS COUNTRY CLUB	Coliform MCL	Enforcement in process
IL3003640 HENNEPIN CANAL PKWY ST PK (3640)	Coliform (Acute) MCL	Returned to Compliance
IL1170500 HETTICK	Lead Public Education TT	Returned to Compliance
IL1190550 HIGHLAND	Coliform MCL	Returned to Compliance
IL3126557 HITCHING POST BAR	Coliform MCL	Returned to Compliance
IL1235150 HOPEWELL	Combined Radium MCL	Compliance commitment agreement / schedule approved
IL1235150 HOPEWELL	Gross Alpha MCL	Compliance commitment agreement / schedule approved
IL3053413 I74 SPOON RIVER REST AREA	Coliform MCL	Enforcement in process
IL3103713 IDEAL HUNTING AND FISHING CLUB	Coliform MCL	Returned to Compliance
IL0995300 IL PRAIRIE ESTATES SUBDIVISION	Combined Radium MCL	Compliance commitment agreement / schedule approved
IL0995300 IL PRAIRIE ESTATES SUBDIVISION	Gross Alpha MCL	Compliance commitment agreement / schedule approved
IL3141671 INDIAN HILLS FOREST PRESERVE	Coliform MCL	Returned to Compliance

Appendix C

Illinois EPA 2004 Annual Compliance

Maximum Contaminant Level and Treatment Technique Violations

Listing by Water Supply

<u>Facility Number and Name</u>	<u>Contaminant</u>	<u>Comments</u>
IL3085837 INGERSOLL SCOUT RESERVE WELL	Coliform MCL	Returned to Compliance
IL0250010 IOLA	Total Trihalomethane MCL	Compliance commitment agreement / schedule approved
IL3049296 ISLAND MARINA	Coliform MCL	Enforcement in process
IL1910020 JASPER WATERWORKS CORPORATION	Coliform (Acute) MCL	Returned to Compliance
IL1910020 JASPER WATERWORKS CORPORATION	Coliform MCL	Returned to Compliance
IL0830250 JERSEYVILLE	Coliform MCL	Returned to Compliance
IL1970450 JOLIET	Combined Radium MCL	Compliance commitment agreement / schedule approved
IL1970450 JOLIET	Gross Alpha MCL	Compliance commitment agreement / schedule approved
IL1977930 JOLIET CORRECTIONAL CENTER	Combined Radium MCL	Compliance commitment agreement / schedule approved
IL1977930 JOLIET CORRECTIONAL CENTER	Gross Alpha MCL	Compliance commitment agreement / schedule approved
IL1310100 JOY	Coliform MCL	Returned to Compliance
IL3124354 JUBILEE ST PK VALLEY VIEW WELL	Coliform MCL	Returned to Compliance
IL1977940 KANKAKEE CORRECTIONAL CENTER	Combined Radium MCL	Compliance commitment agreement / schedule approved
IL0730650 KEWANEE	Combined Radium MCL	Compliance commitment agreement / schedule approved
IL0730650 KEWANEE	Gross Alpha MCL	Compliance commitment agreement / schedule approved
IL3016709 KILBUCK CREEK F P LOWER ENTRAN	Coliform MCL	Enforcement in process
IL3126904 KINGS HOUSE OF RETREAT	Coliform MCL	Enforcement in process
IL1430450 KINGSTON MINES	Combined Radium MCL	Compliance commitment agreement / schedule Approved

Appendix C

Illinois EPA 2004 Annual Compliance

Maximum Contaminant Level and Treatment Technique Violations

Listing by Water Supply

<u>Facility Number and Name</u>	<u>Contaminant</u>	<u>Comments</u>
IL1430450 KINGSTON MINES	Gross Alpha MCL	Compliance commitment agreement / schedule approved
IL1210300 KINMUNDY	Inadequate DBP Precursor Removal TT	Pursuing a formal compliance schedule
IL1210300 KINMUNDY	Insufficient Inactivation TT	Pursuing a formal compliance schedule
IL0630450 KINSMAN	Combined Radium MCL	Compliance commitment agreement / schedule approved
IL1870050 KIRKWOOD	Coliform MCL	Returned to Compliance
IL3078162 KNOX CO SPORTSMENS CLUB	Coliform MCL	Enforcement in process
IL0950300 KNOXVILLE	Combined Radium MCL	Returned to Compliance
IL0950300 KNOXVILLE	Gross Alpha MCL	Returned to Compliance
IL3092981 KOPPER KETTLE KAFE (092981)	Coliform MCL	Returned to Compliance
IL0995329 LA SALLE COUNTY NURSING HOME	Combined Radium MCL	Returned to Compliance
IL0110450 LADD	Combined Radium MCL	Returned to Compliance
IL1995200 LAKE OF EGYPT PWD	Inadequate DBP Precursor Removal TT	Returned to Compliance
IL0910020 LAKE SHANNON	Inadequate DBP Precursor Removal TT	Pursuing a formal compliance schedule
IL0970850 LAKE ZURICH	Combined Radium MCL	Compliance commitment agreement / schedule approved
IL0970850 LAKE ZURICH	Gross Alpha MCL	Returned to Compliance
IL1955150 LAKEVIEW HILLS WATER SUPPLY COMPANY	Combined Radium MCL	Compliance commitment agreement / schedule approved
IL3069096 LITTLE TEXAS INC WM STEWART	Coliform MCL	Returned to Compliance
IL1870100 LITTLE YORK	Combined Radium MCL	Compliance commitment agreement / schedule approved
IL1870100 LITTLE YORK	Gross Alpha MCL	Compliance commitment agreement / schedule Approved

Appendix C

Illinois EPA 2004 Annual Compliance

Maximum Contaminant Level and Treatment Technique Violations

Listing by Water Supply

<u>Facility Number and Name</u>	<u>Contaminant</u>	<u>Comments</u>
IL0850020 LONGHOLLOW POINT	Water Quality Parameter (Lead/Copper) TT	Returned to Compliance
IL0990450 LOSTANT	Combined Radium MCL	Returned to Compliance
IL0990450 LOSTANT	Gross Alpha MCL	Returned to Compliance
IL3086207 LOUD THUNDER BSA AUPPER	Coliform MCL	Returned to Compliance
IL3085902 LOUD THUNDER FOREST PRESERVE B	Coliform MCL	Returned to Compliance
IL2010150 LOVES PARK	Combined Radium MCL	Compliance commitment agreement / schedule approved
IL0995336 LYNNWOOD WATER CORPORATION	Combined Radium MCL	Compliance commitment agreement / schedule approved
IL3042713 MACS TAP	Coliform MCL	Returned to Compliance
IL1330200 MAEYSTOWN	Water Quality Parameter (Lead/Copper) TT	Returned to Compliance
IL1970550 MANHATTAN	Combined Radium MCL	Returned to Compliance
IL0890500 MAPLE PARK	Combined Radium MCL	Returned to Compliance
IL1430500 MAPLETON	Combined Radium MCL	Returned to Compliance
IL1430500 MAPLETON	Gross Alpha MCL	Returned to Compliance
IL0895285 MARGARETS HI-ACRE MHP	Combined Radium MCL	Returned to Compliance
IL1550250 MARK	Combined Radium MCL	Returned to Compliance
IL1550250 MARK	Gross Alpha MCL	Returned to Compliance
IL0990500 MARSEILLES	Combined Radium MCL	Compliance commitment agreement / schedule approved
IL0990110 MARSEILLES SOUTH	Combined Radium MCL	Enforcement in process
IL0230150 MARTINSVILLE	Coliform MCL	Returned to Compliance
IL3052886 MATTHIESSEN STATE PARK (52886)	Coliform MCL	Returned to Compliance
IL3045708 MC DONALDS	Coliform MCL	Returned to Compliance

Appendix C

Illinois EPA 2004 Annual Compliance

Maximum Contaminant Level and Treatment Technique Violations

Listing by Water Supply

<u>Facility Number and Name</u>	<u>Contaminant</u>	<u>Comments</u>
IL3064824 MC HENRY CO COLLEGE/S SELCKE	Total Haloacetic Acids MCL	Enforcement in process
IL3064824 MC HENRY CO COLLEGE/S SELCKE	Total Trihalomethane MCL	Enforcement in process
IL0990550 MENDOTA	Coliform MCL	Returned to Compliance
IL0990550 MENDOTA	Combined Radium MCL	Compliance commitment agreement / schedule approved
IL3000612 MIDLAND COUNTRY CLUB	Coliform MCL	Returned to Compliance
IL1610400 MILAN	Coliform MCL	Returned to Compliance
IL1870150 MONMOUTH	Combined Radium MCL	Compliance commitment agreement / schedule approved
IL1870150 MONMOUTH	Gross Alpha MCL	Compliance commitment agreement / schedule approved
IL0895319 MOOSEHEART	Combined Radium MCL	Compliance commitment agreement / schedule approved
IL0935140 MORGAN CREEK	Combined Radium MCL	Compliance commitment agreement / schedule approved
IL0150200 MOUNT CARROLL	Combined Radium MCL	Compliance commitment agreement / schedule approved
IL1410350 MOUNT MORRIS	Combined Radium MCL	Compliance commitment agreement / schedule approved
IL3129023 MOWEQUA GOLF COURSE	Coliform MCL	Enforcement in process
IL3057703 MUSTANG SALLYS BAR & BOWL	Coliform MCL	Returned to Compliance
IL1035269 NACHUSA LUTHERAN HOME	Lead Public Education TT	Returned to Compliance
IL0990600 NAPLATE	Combined Radium MCL	Compliance commitment agreement / schedule approved
IL0110700 NEPONSET	Combined Radium MCL	Compliance commitment agreement / schedule approved
IL0110700 NEPONSET	Gross Alpha MCL	Returned to Compliance
IL1670800 NEW BERLIN	Inadequate DBP Precursor Removal TT	Pursuing a formal compliance schedule

Appendix C

Illinois EPA 2004 Annual Compliance

Maximum Contaminant Level and Treatment Technique Violations

Listing by Water Supply

<u>Facility Number and Name</u>	<u>Contaminant</u>	<u>Comments</u>
IL3010215 NEW CASTLE BIBLE CHURCH	Coliform MCL	Returned to Compliance
IL3085696 NEW CRYSTAL LAKE	Coliform MCL	Enforcement in process
IL1070450 NEW HOLLAND	Nitrate MCL	Returned to Compliance
IL3046003 NEW MILL RESTAURANT	Coliform MCL	Returned to Compliance
IL3114439 NEW MILL TAP C/O BILL RADER	Coliform MCL	Enforcement in process
IL3114439 NEW MILL TAP C/O BILL RADER	Coliform MCL	Returned to Compliance
IL0890600 NORTH AURORA	Combined Radium MCL	Compliance commitment agreement / schedule approved
IL0890600 NORTH AURORA	Gross Alpha MCL	Returned to Compliance
IL1795780 NORTH TAZEWELL PWD	Coliform MCL	Returned to Compliance
IL0075275 OAK LAWN MHP	Coliform MCL	Returned to Compliance
IL1550010 OAK PARK ESTATES	Combined Radium MCL	Purchase Water
IL1550010 OAK PARK ESTATES	Gross Alpha MCL	Purchase Water
IL1830600 OAKWOOD	Total Haloacetic Acids MCL	Compliance commitment agreement / schedule approved
IL1770350 ORANGEVILLE	Coliform MCL	Returned to Compliance
IL1410400 OREGON	Combined Radium MCL	Returned to Compliance
IL0930150 OSWEGO	Coliform MCL	Returned to Compliance
IL0930150 OSWEGO	Combined Radium MCL	Compliance commitment agreement / schedule approved
IL0930150 OSWEGO	Gross Alpha MCL	Returned to Compliance
IL1175150 PALMYRA-MODESTO WATER COMMISSION	Inadequate DBP Precursor Removal TT	Pursuing a formal compliance schedule
IL0210500 PANA	Inadequate DBP Precursor Removal TT	Pursuing a formal compliance schedule
IL0054720 PANAMA	Total Trihalomethane MCL	Compliance commitment agreement / schedule approved

Appendix C

Illinois EPA 2004 Annual Compliance

Maximum Contaminant Level and Treatment Technique Violations

Listing by Water Supply

<u>Facility Number and Name</u>	<u>Contaminant</u>	<u>Comments</u>
IL0971400 PARK CITY	Coliform MCL	Returned to Compliance
IL1210400 PATOKA	Failure to Profile TT	Compliance commitment agreement / schedule approved
IL1210400 PATOKA	Inadequate DBP Precursor Removal TT	Returned to Compliance
IL0895445 PATTERSON MHP	Coliform MCL	Returned to Compliance
IL3142380 PECATONICA WETLAND FOREST PRES	Coliform MCL	Returned to Compliance
IL1570350 PERCY	Combined Radium MCL	Compliance commitment agreement / schedule approved
IL0312490 PHOENIX	Lead Public Education TT	Returned to Compliance
IL1490750 PITTSFIELD	Total Trihalomethane MCL	Compliance commitment agreement / schedule approved
IL1970800 PLAINFIELD	Combined Radium MCL	Returned to Compliance
IL0010600 PLAINVILLE	Lead Public Education TT	Returned to Compliance
IL3141739 PORTER PARK	Coliform MCL	Enforcement in process
IL0630060 PRAIRIE OAKS ESTS HOMEOWNERS ASSN	Combined Radium MCL	Enforcement in Process
IL0630060 PRAIRIE OAKS ESTS HOMEOWNERS ASSN	Gross Alpha MCL	Enforcement in Process
IL0110850 PRINCETON	Coliform MCL	Returned to Compliance
IL3133694 PRINCETON CHRISTIAN ACADEMY	Coliform MCL	Returned to Compliance
IL0970320 PROMONTORY POINTE HOMEOWNERS ASSOCIATION	Combined Radium MCL	Compliance commitment agreement / schedule approved
IL0970320 PROMONTORY POINTE HOMEOWNERS ASSOCIATION	Gross Alpha MCL	Compliance commitment agreement / schedule approved
IL0971100 PROVIDENCE AT PAINTED LAKES	Combined Radium MCL	Compliance commitment agreement / schedule approved
IL1615580 RAINBOW RIDGE	Coliform MCL	Returned to Compliance

Appendix C

Illinois EPA 2004 Annual Compliance

Maximum Contaminant Level and Treatment Technique Violations

Listing by Water Supply

<u>Facility Number and Name</u>	<u>Contaminant</u>	<u>Comments</u>
IL0975950 RAND ESTS SBDV	Lead Public Education TT	Returned to Compliance
IL0990900 RANSOM	Combined Radium MCL	Compliance commitment agreement / schedule approved
IL0914780 REDDICK	Combined Radium MCL	Compliance commitment agreement / schedule approved
IL0914780 REDDICK	Gross Alpha MCL	Returned to Compliance
IL3060764 RIGGERTS DIE SCHEUNE	Coliform MCL	Returned to Compliance
IL3073700 ROBINSON WOODS S GR 2 3112	Coliform (Acute) MCL	Enforcement in process
IL1615387 ROCK ISLAND ARSENAL	Inadequate DBP Precursor Removal TT	Pursuing a formal compliance schedule
IL3125302 ROCK ISLAND TRAIL STATE PARK A	Coliform MCL	Returned to Compliance
IL1970850 ROCKDALE	Combined Radium MCL	Compliance commitment agreement / schedule approved
IL3141721 ROCKFOR ROTARY FOREST PRESERVE	Coliform MCL	Returned to Compliance
IL2010300 ROCKFORD	Combined Radium MCL	Compliance commitment agreement / schedule approved
IL3118174 ROLLING KNOLLS COUNTRY CLUB	Coliform MCL	Enforcement in process
IL3113555 ROLLING OAKS CAMPGROUND (113555)	Coliform MCL	Enforcement in process
IL1970900 ROMEOVILLE	Combined Radium MCL	Compliance commitment agreement / schedule approved
IL3005413 ROOKS CREEK ELEMENTARY SCHOOL	Total Haloacetic Acids MCL	Enforcement in process
IL3005413 ROOKS CREEK ELEMENTARY SCHOOL	Total Trihalomethane MCL	Enforcement in process
IL0970170 ROYAL MELBOURNE HOMEOWNERS ASN	Combined Radium MCL	Returned to Compliance
IL3103333 SAND RIDGE STATE FOREST (103333)	Coliform (Acute) MCL	Enforcement in process

Appendix C

Illinois EPA 2004 Annual Compliance

Maximum Contaminant Level and Treatment Technique Violations

Listing by Water Supply

<u>Facility Number and Name</u>	<u>Contaminant</u>	<u>Comments</u>
IL0312790 SAUK	Coliform MCL	Returned to Compliance
IL3142190 SAVE-A-LOT (142190)	Coliform MCL	Enforcement in process
IL0991050 SENECA	Combined Radium MCL	Compliance commitment agreement / schedule approved
IL3122317 SENECA HUNT CLUB	Coliform MCL	Returned to Compliance
IL3046177 SEVERSON DELLS FP HANDPUMP	Coliform MCL	Returned to Compliance
IL3046375 SEWARD UPPER ELEMENTARY SCHOOL	Coliform MCL	Returned to Compliance
IL0635225 SHADY OAKS MHP	Combined Radium MCL	Returned to Compliance
IL3136168 SHEFFIELD MARATHON	Coliform MCL	Enforcement in process
IL3126821 SHERIDAN ROD & GUN	Coliform MCL	Enforcement in process
IL0890040 SILVER GLEN ESTS	Combined Radium MCL	Compliance commitment agreement / schedule approved
IL1610700 SILVIS	Gross Alpha MCL	Returned to Compliance
IL0890750 SLEEPY HOLLOW	Coliform MCL	Returned to Compliance
IL0050250 SMITHBORO	Total Trihalomethane MCL	Compliance commitment agreement / schedule approved
IL3102327 SOLLIT TAP	Coliform MCL	Returned to Compliance
IL0630650 SOUTH WILMINGTON	Combined Radium MCL	Returned to Compliance
IL0630650 SOUTH WILMINGTON	Gross Alpha MCL	Returned to Compliance
IL3108670 SPEEDWAY (108670)	Coliform MCL	Returned to Compliance
IL0111000 SPRING VALLEY	Combined Radium MCL	Returned to Compliance
IL3036970 ST PATRICKS CHURCH	Coliform MCL	Returned to Compliance
IL0275250 ST ROSE PWD	Nitrate MCL	Returned to Compliance
IL1550300 STANDARD	Combined Radium MCL	Compliance commitment agreement / schedule approved

Appendix C

Illinois EPA 2004 Annual Compliance

Maximum Contaminant Level and Treatment Technique Violations

Listing by Water Supply

<u>Facility Number and Name</u>	<u>Contaminant</u>	<u>Comments</u>
IL1550300 STANDARD	Dichloromethane MCL	Returned to Compliance
IL1550300 STANDARD	Gross Alpha MCL	Compliance commitment agreement / schedule approved
IL3119917 STANDARD CITY TAP	Coliform MCL	Enforcement in process
IL1171050 STAUNTON	Inadequate DBP Precursor Removal TT	Pursuing a formal compliance schedule
IL1171050 STAUNTON	Insufficient Inactivation TT	Pursuing a formal compliance schedule
IL1171050 STAUNTON	Total Trihalomethane MCL	Compliance commitment agreement / schedule approved
IL1570650 STEELEVILLE	Combined Radium MCL	Returned to Compliance
IL0314860 STEGER	Water Quality Parameter (Lead/Copper) TT	Returned to Compliance
IL3138750 STREATOR BAPTIST CAMP EAST WEL	Coliform MCL	Enforcement in process
IL3138750 STREATOR BAPTIST CAMP EAST WEL	Coliform MCL	Returned to Compliance
IL0735300 SUNNY HILL ESTATES SUBDIVISION	Coliform MCL	Returned to Compliance
IL0310080 SUNSET MHP	Combined Radium MCL	Compliance commitment agreement / schedule approved
IL0370550 SYCAMORE	Combined Radium MCL	Compliance commitment agreement / schedule approved
IL2035150 TEN MILE VIEW SUBDIVISION	Coliform MCL	Returned to Compliance
IL3019992 THE BACK 40 INC	Coliform MCL	Returned to Compliance
IL3129726 THE BARN	Coliform MCL	Returned to Compliance
IL3124974 THE BOURNE	Coliform MCL	Returned to Compliance
IL3000539 THE GIBSON CAMPGROUND	Coliform MCL	Enforcement in process
IL3033951 THE GREAT SAUK TRAIL - EAST	Coliform MCL	Returned to Compliance
IL3126508 THE OLD SHAMROCK	Coliform MCL	Returned to Compliance

Appendix C

Illinois EPA 2004 Annual Compliance

Maximum Contaminant Level and Treatment Technique Violations

Listing by Water Supply

<u>Facility Number and Name</u>	<u>Contaminant</u>	<u>Comments</u>
IL0970310 THE PRESERVE AT LONG GROVE	Combined Radium MCL	Compliance commitment agreement / schedule approved
IL2035200 TIMBERLAN SUBDIVISION	Coliform MCL	Returned to Compliance
IL3004713 TOMS LODGE	Coliform MCL	Enforcement in process
IL3004713 TOMS LODGE	Coliform MCL	Returned to Compliance
IL0317765 TOUHY MHP	Combined Radium MCL	Compliance commitment agreement / schedule approved
IL0317765 TOUHY MHP	Gross Alpha MCL	Compliance commitment agreement / schedule approved
IL3004606 TRAILSIDE FOREST PRESERVE	Coliform MCL	Returned to Compliance
IL3127696 TRASK BRIDGE FOREST PRE -HNDPM	Coliform MCL	Enforcement in process
IL3055590 TREMONT AMERICAN LEGION	Coliform MCL	Enforcement in process
IL3117606 TURTLE CREEK REST AREA	Coliform MCL	Returned to Compliance
IL3130666 TWO RIVERS FOREST PRESERVE	Coliform MCL	Returned to Compliance
IL3130583 TWO WHEEL INN	Coliform MCL	Enforcement in process
IL3036079 UNITED SCHOOL DISTRICT 304	Coliform MCL	Returned to Compliance
IL0971170 UNIVERSITY ST MARY OF THE LAKE	Lead Public Education TT	Returned to Compliance
IL1975200 UTL INC-CAMELOT UTILITIES, INC.	Combined Radium MCL	Returned to Compliance
IL2015160 UTL INC-COVENTRY CREEK SUBDIVISION	Combined Radium MCL	Compliance commitment agreement / schedule approved
IL0975370 UTL INC-DEL-MAR WATER COMPANY	Lead Public Education TT	Returned to Compliance
IL1115700 UTL INC-WHISPERING HILLS WATER COMPANY	Coliform MCL	Returned to Compliance
IL0875510 VIENNA CORRECTIONAL CENTER	Chlorite MCL	Returned to Compliance

Appendix C

Illinois EPA 2004 Annual Compliance

Maximum Contaminant Level and Treatment Technique Violations

Listing by Water Supply

<u>Facility Number and Name</u>	<u>Contaminant</u>	<u>Comments</u>
IL0875510 VIENNA CORRECTIONAL CENTER	Inadequate DBP Precursor Removal TT	Pursuing a formal compliance schedule
IL3138362 VILLAGE OF ROSCOE PLAYERS PK	Coliform MCL	Enforcement in process
IL1310450 VIOLA	Combined Radium MCL	Compliance commitment agreement / schedule approved
IL1310450 VIOLA	Gross Alpha MCL	Compliance commitment agreement / schedule approved
IL0971770 VOLO	Combined Radium MCL	Compliance commitment agreement / schedule approved
IL3060285 WALNUT GR UNITED METHODIST CHU	Coliform MCL	Enforcement in process
IL0890110 WASCO SD	Combined Radium MCL	Compliance commitment agreement / schedule approved
IL1615130 WATER WERKS	Lead Public Education TT	Returned to Compliance
IL3122275 WEBBS VALLEY VIEW CAMPGROUND	Coliform MCL	Returned to Compliance
IL3137232 WEDRON SILICA SAND COMPANY	Coliform MCL	Returned to Compliance
IL0430900 WEST CHICAGO	Combined Radium MCL	Compliance commitment agreement / schedule approved
IL0430900 WEST CHICAGO	Gross Alpha MCL	Compliance commitment agreement / schedule approved
IL0977370 WEST SHORE PARK SUBDIVISION	Combined Radium MCL	Returned to Compliance
IL1910010 WESTERN WAYNE WATER DISTRICT	Total Trihalomethane MCL	Pursuing a formal compliance schedule
IL0955100 WESTPORT WATER MUTUAL	Lead Public Education TT	Returned to Compliance
IL0990060 WHISPERING PINES MHP	Combined Radium MCL	Compliance commitment agreement / schedule approved
IL0990060 WHISPERING PINES MHP	Gross Alpha MCL	Compliance commitment agreement / schedule approved
IL0995425 WILDLIFE MHP	Combined Radium MCL	Compliance commitment agreement / schedule Approved

Appendix C

Illinois EPA 2004 Annual Compliance

Maximum Contaminant Level and Treatment Technique Violations

Listing by Water Supply

<u>Facility Number and Name</u>	<u>Contaminant</u>	<u>Comments</u>
IL0990030 WOODSMOKE RANCH ASSOCIATION	Combined Radium MCL	Compliance commitment agreement / schedule approved
IL0990030 WOODSMOKE RANCH ASSOCIATION	Gross Alpha MCL	Returned to Compliance
IL0970080 WYNSTONE WATER COMPANY	Combined Radium MCL	Compliance commitment agreement / schedule approved
IL0930250 YORKVILLE	Combined Radium MCL	Compliance commitment agreement / schedule approved
IL0930250 YORKVILLE	Gross Alpha MCL	Compliance commitment agreement / schedule approved
IL0190040 YOUNGS HILLCREST MHP	Coliform MCL	Returned to Compliance
IL3135731 YUMMIES	Coliform MCL	Returned to Compliance