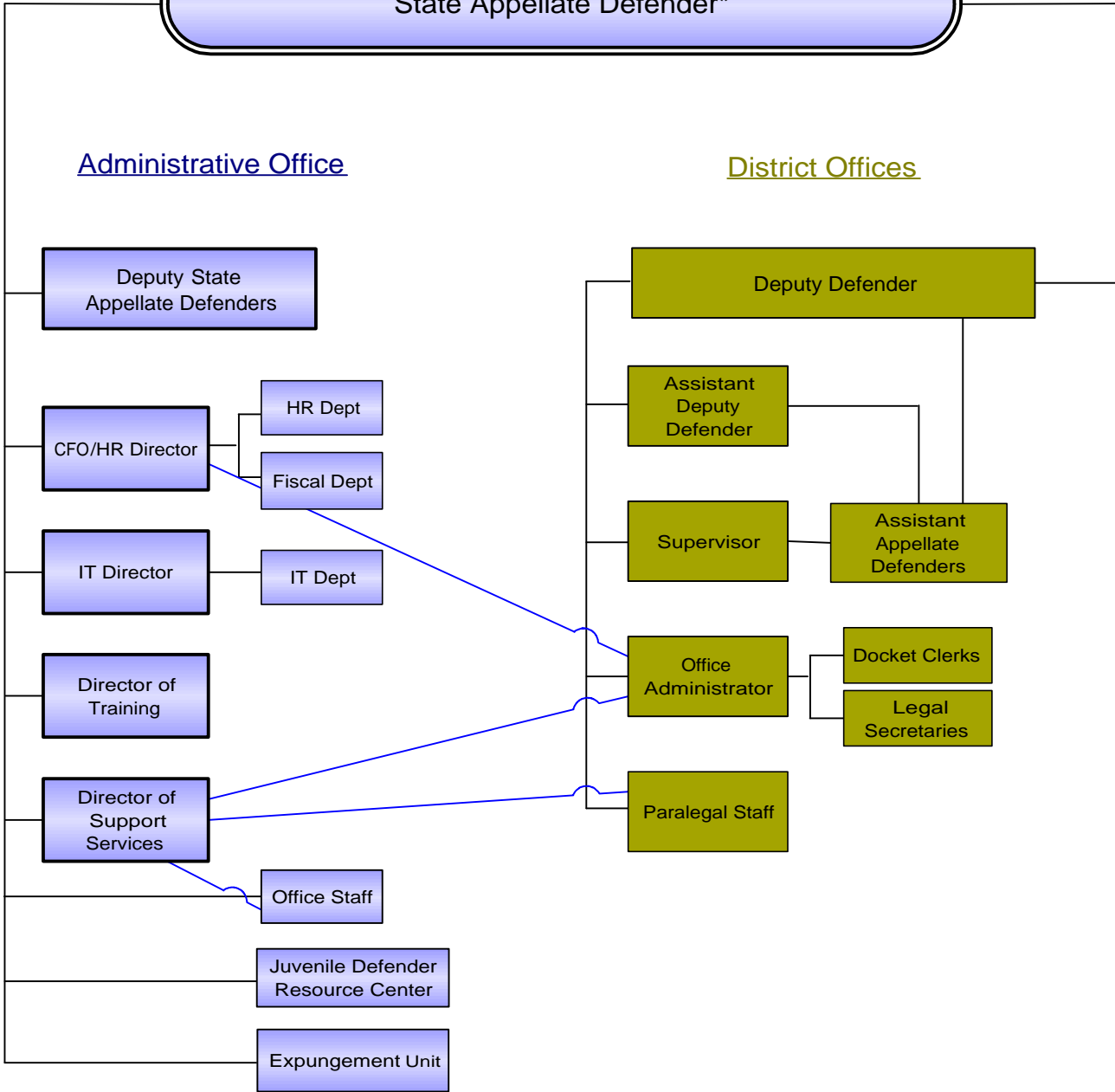


Office of the State Appellate Defender Organization Chart

State Appellate Defender*

Administrative Office

District Offices



*Illinois Supreme Court: The State Appellate Defender is appointed by the Illinois Supreme Court.

Board of Commissioners: Office of the State Appellate Defender Board of Commissioners advises the State Appellate Defender and may, subject to rules of the Supreme Court, recommend policies for the operation of the agency.