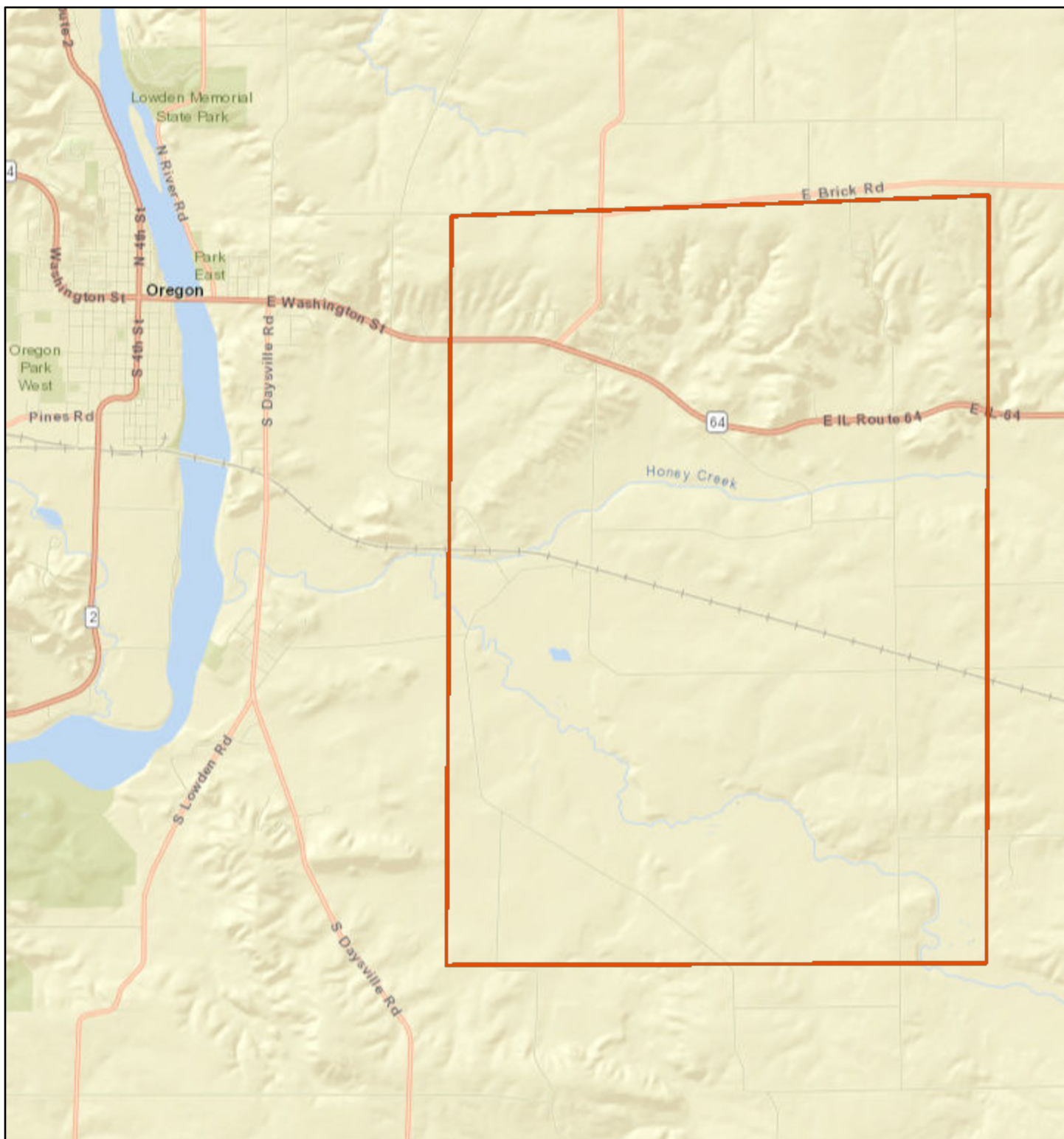
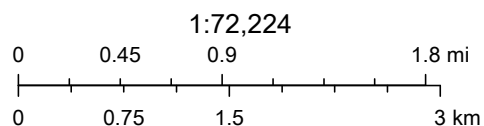


2020 Gypsy Moth MD Treatments Ogle County 9,340 acres (IL_Ogle_2)



1/21/2020, 3:57:51 PM

The area above, outlined in red, is to be treated for an infestation of the European Gypsy Moth with Mating Disruption (MD). The product to be used is called SPLAT GM Organic, it is made from water, wax and vegetable oil with pheromones. This pheromone is the sexual attractant for male gypsy moths. The droplets of SPLAT GM confuse the male moths in an area so they can not find real female moths. The area will be treated late June, weather permitting, by low flying yellow 'Air Tractors' also known as Crop Duster airplanes. This program is managed by the Illinois Department of Agriculture and the Slow the Spread Foundation. For more information please call the IDA Northern Field office 815.787.5476



Sources: Esri, HERE, Garmin, USGS, Intermap, INCREMENT P, NRCan, Esri Japan, METI, Esri China (Hong Kong), Esri Korea, Esri (Thailand), NGCC, (c) OpenStreetMap contributors, and the GIS User Community