

State of Illinois
Rod R. Blagojevich, Governor

Department of Agriculture
Charles Hartke, Director



EAB NEWS

EAB NEWS

SEPT 07

EAB NEWS ~
VOLUME 1, ISSUE 5

GOV. BLAGOJEVICH CREATES LOAN PROGRAM TO REPLACE ASH TREES DESTROYED BY EMERALD ASH BORER

Communities eligible for low interest loans for reforestation projects

On September 2, Governor Rod R. Blagojevich signed legislation to help Northern Illinois communities infested with the tree-killing emerald ash borer finance potentially expensive reforestation projects. **Senate Bill 1617**, sponsored by State Senator Jeffrey Schoenberg (D-Evanston) and State Representative Julie Hamos (D-Evanston), creates the Emerald Ash Borer Revolving Loan Program, which will provide low-cost loans to local governments for replanting trees on public lands within the boundaries of the state's emerald ash borer quarantine area.

"While the cost to remove and dispose of infested ash trees can be substantial, the greatest cost from the destruction this beetle causes is the loss of trees that beautify our streets and neighborhoods," Gov. Blagojevich said. "This program will help restore the quality of life in communities that lose trees to the ash borer and ensure that financing for tree plan-

ning projects is affordable. To make sure communities can take advantage of this program, I will include a \$2 million request in the capital bill I introduced that is now before the General Assembly."

The Illinois Finance Authority will administer the program and issue loans to eligible communities pursuant to the recommendations of the Illinois Department of Agriculture. Loans must be paid off within 20 years. Cash payments received from communities repaying their loans will be returned to the program and used to finance additional replanting projects.

"The replanting program has other benefits as well," Rep. Hamos said. "Currently, 20 percent or more of the trees in many suburban communities are ash. As different varieties of trees are planted to replace them, we'll increase the diversity of our tree canopy and lessen the potential impact of pests and plant diseases in the future."

The emerald ash borer is a small, metallic-green insect from Asia that was first discovered in the United States near Detroit, Michigan, in 2002. The first beetle detection in Illinois occurred in June, 2006 in a rural Kane County subdivision west of St. Charles. Since then, infestations have been identified along Lake Michigan in north Cook County, near Peru in LaSalle County and in Glendale Heights in DuPage County.

The Illinois Department of Agriculture has established a quarantine area to prevent the spread of the beetle. The quarantine area includes all or portions of 18 Northeastern Illinois counties and restricts the movement of ash wood and ash nursery products from these counties to un-infested areas. The impacted counties are: Boone, Bureau, Cook, DeKalb, DuPage, Grundy, Kane, Kankakee, Kendall, Lake, LaSalle, Lee, Livingston, McHenry, Ogle, Putnam, Will and Winnebago.

SB 1617 becomes effective immediately.



Survey turns to Harvest

The Priority Zone 1 area for the Illinois Department of Agriculture's EAB detection survey is primarily complete with survey tree selection and GPS-mapping. The northern portion of Kankakee County which is in Priority Zone 2 is included in this portion of the survey.

Each survey tree in each of the counties in Zone 1 will be harvested for bark-stripping in mid-September. Bark-stripping is the most accurate technique to determine where this invasive pest is present.

The Illinois Department of Agriculture continues its

search for EAB through survey in the southern and western portions of Cook County and hopes to finalize Cook County survey tree selection and begin harvesting in late September.

Tree harvest and bark-stripping is expected to be complete by January 2008. Survey work in Priority Zone 2 will begin once Priority Zone 1 is complete.

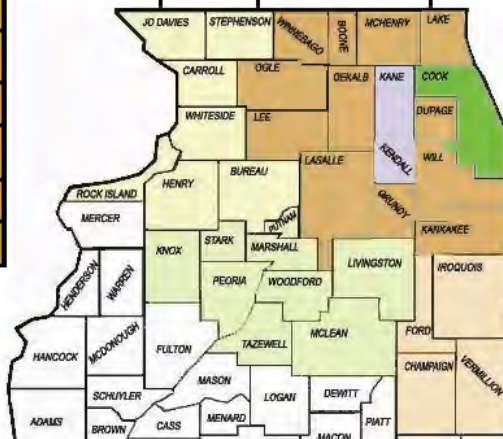
The survey is funded in part through an emergency grant secured from the USDA limited specifically for EAB detection, control/eradication and outreach in Illinois.

Priority Zone 1		Priority Zone 2		Priority Zone 3		Priority Zone 4	
County	Trees	County	Trees	County	Trees	County	Trees
/ Lake	112	Kankakee	166	Stephenson	141	Putnam	40
⇒ Cook	100	Iroquois	279	Jo Davies	150	Marshall	96
/ Will	209	Vermillion	225	Carroll	111	Stark	72
/ DuPage	83	Champaign	249	Whiteside	171	Knox	179
/ / McHenry	151	Ford	121	Bureau	217	Peoria	155
√ Kane	Limited			Henry	206	Woodford	132
√ Kendall	90			Rock Island	106	Tazewell	162
/ Grundy	10					McLean	296
/ LaSalle	263					Livingston	261
/ DeKalb	158						
/ Boone							
/ Winnebago	126						
/ Ogle	169						
/ Lee	181						

√ **Completed Survey**

/ **Completed survey tree selection — bark stripping to begin mid-September**

⇒ **Working in**



EAB Conference ~ DuPage County



Nearly 60 DuPage County area public officials and stakeholders attended an EAB seminar at the Morton Arboretum on Friday, August 24, with guest speaker US Senator Dick Durbin.

Hosted by the Morton Arboretum, the attendees were versed on the history of discovery of EAB in North America and its life cycle.

The senator touted federal legislation proposed to assist communities with necessary equipment to combat EAB. Illinois Department of Agriculture officials, Warren Goetsch, Environmental Programs Bureau Chief and IDA's EAB Program Manager Mark Cinnamon, discussed IDA's role and efforts concerning EAB. Steven Knight, USDA APHIS State Plant Health Director, addressed the federal role., while Theses Poland, Project Leader for USFS, addressed research initiatives.

Spreading the word - at the Illinois State Fair

Illinois Department of Agriculture staff members, Brad Beaver, Livestock Management Facilities Program Manager and Susan Barron, Environmental Protection Specialist designed and created an

eye-catching and informative display focusing primarily on EAB awareness for the thousands of daily visitors attending the 2007 Illinois State Fair in Springfield, August 10-19, 2007.

Staff members were on hand to answer specific questions and handout hundreds of shopping bags, pens, balloons and tattoos with the EAB message:

Don't Move Firewood ~ Buy Locally.

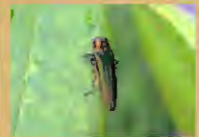


Size *DOES* Matter!

At the Illinois State Fair, IDA showcased a bug display of a variety of invasive and non-invasive pests. Three of the bugs displayed were the emerald ash borer.

When pointed out, the visitors were amazed at the size of the bug and many commented, "Wow, I thought they were a lot bigger than that. From the pictures, it appeared the emerald ash borer was the size of a grasshopper." Enlarged pictures help show the detail of the bug, but in reality may confuse the general public as to the size of this ash predator.

Don't be confused. While IDA may show you pictures of the Emerald Ash Borer that look like this on the left, we are simply trying to give you an idea of what the bug looks like up-close, but, it may seem that EAB is much bigger than it actually is. This same picture to the right is the bug's actual size. It is very small and no bigger than a penny.



↑ Actual size of EAB.

← Exaggerated size.

If you suspect EAB, please contact your city forester or local arborist or take digital photographs of the tree and the symptoms it is expressing and email them with contact info to:

AGR.EAB@Illinois.gov

Illinois Department of Agriculture ~ DeKalb Office

2280 Bethany Road, Suite B ~ DeKalb, IL 60115

815/787-5476 ~ 815/787-5488 fax

Hotline: 800/641-3934

Sign-up for EAB electronic newsletters:

AGR.EAB@illinois.gov



WWW.ILLINOISEAB.COM

**Don't move firewood!
~ Spread the message,
not the bugs!**