

State of Illinois  
Pat Quinn, Governor

Department of Agriculture  
Tom Jennings, Director



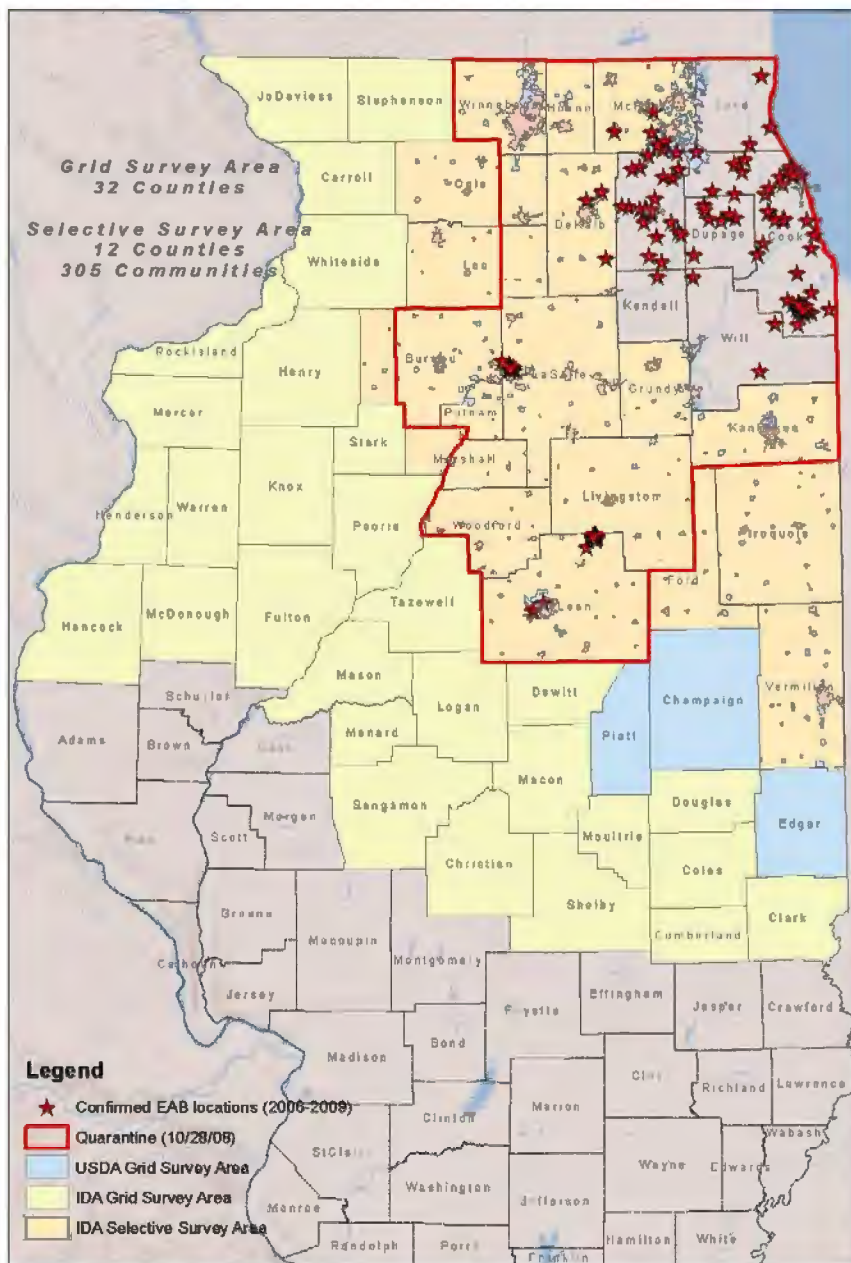
# EAB NEWS

WINTER 2010

EAB NEWS ~ VOLUME 4,  
ISSUE 1



## 2010 EAB TRAPPING STRATEGY



Proposed Illinois EAB Trap Survey 2010



Warren D. Gendrich, P.E., Chief  
Bureau of Environmental Programs  
Division of Natural Resources

Thomas E. Jennings, Director  
Pat Quinn, Governor



The 2010 EAB Trapping strategy is currently under development and will be an adjustment from what was utilized in 2009. Since the results from the 2009 trapping season were negative in Illinois for EAB outside the present internal state quarantine zone, USDA-APHIS has adjusted their grid-trapping area northward from the 2009 area for round three of the trapping program.

The 2010 plan includes 29 counties (identified in yellow) where the Illinois Department of Agriculture (IDA) will be deploying the purple "sticky" traps every 1.5 square miles as in years past. USDA-APHIS staff will be deploying traps in the same pattern in three counties identified in blue on the map to the left.

Counties identified as beige within the existing internal state quarantine zone will be monitored through traps deployed by population epicenters on a community volunteer basis. The three counties shown in beige located outside of the internal state quarantine area will also be trapped in the same manner but somewhat more intensely.

The EAB Management and Science Advisory Panel will be meeting in February to finalize plans for the 2010 trapping program. Trap deployment is expected to commence in early April.



## Emerald Ash Borer

### Risk Management Seminars to be scheduled for 2010

In 2009, the University of Illinois Extension, in cooperation with the Illinois Department of Agriculture (IDA), began a series of EAB Risk Management seminars around the state for master gardeners, master naturalists, nursery owners, firewood dealers, tree care professionals and public works officials.

In total, the educators trained nearly 150 people on the biology and life cycle of EAB, look-alike bugs and trees, insecticidal management with demonstrations, quarantine regulations, and community action plans.

The success of these seminars has spawned the planning of a second round of EAB Risk Management seminars for 2010. Again, Extension and IDA will present this same information, now targeting Department of Natural Resources state parks directors, conservationists, and other interested parties. The dates and locations of the 2010 seminars are forthcoming and will be available on the EAB website when finalized.

The risk management programs were funded by USDA-APHIS.





## IDA Amends EAB Compliance Agreement

In December 2009, the Illinois Department of Agriculture amended the Emerald Ash Borer compliance agreement to include the following wording:

3. Any and all persons or entities transferring possession of regulated articles within the EAB quarantine zone to another person or entity shall inform the person or entity taking possession of the regulated article, either verbally or in writing, that the said regulated articles are subject to State and Federal quarantine regulations;

In addition to adding the aforementioned language, the language dealing with stump removal has been completely removed from the earlier document. However, the Department continues to recommend that ash tree stumps be ground to at least 8” below the surface and covered with soil or treated with an appropriate herbicide to ensure viable EAB host material does not remain after the ash tree has been removed.

Compliance Agreements are for any and all firewood dealers, municipalities and the following businesses:

nurseries, nursery dealers, landscape waste, tree and shrub maintenance, tree pruning and tree removal. All of these types of businesses and local municipalities located inside the state-issued quarantine zone are required to be in compliance with IDA by means of this agreement. All others outside of the state-issued quarantine zone are strongly urged to also enter into compliance agreements. Compliance agreements are the best way to ensure that we are all doing our part in slowing the spread of this invasive pest.

A copy of the signed agreement must be kept on file at each place of business while additional copies should be maintained in each business vehicle for enforcement purposes.

Currently, a total of 1,130 entities have registered in compliance agreements with IDA, both Illinois entities and others doing business in this state. We thank these businesses and entities for their continued support in helping to slow the spread of EAB. A list of all EAB-compliant entities are listed on our website as we encourage all citizens to support those businesses who work in compliance with us.

**Below is IDA-approved verbiage to attach to your regulated materials when transferring possession from one person to the next. A PDF of this image is available online at [www.IllinoisEAB.com](http://www.IllinoisEAB.com)**



This firewood was harvested from within the IDA Emerald Ash Borer internal state quarantine area. Do not carry this wood across quarantine lines without proper treatment. **This firewood may contain insect pests or plant diseases.**

To help stop the spread of these destructive pests, the IDA recommends that this entire bundle be consumed prior to May 1.

[www.IllinoisEAB.com](http://www.IllinoisEAB.com)

**Buy Firewood Locally Burn Firewood Locally!!!!**

800-641-3934

You can help slow the spread of various insect pests and plant diseases by not moving firewood.

It is a violation of Federal and State Law to move firewood across the state line!

If you are camping, the IDA recommends you do not carry any unused firewood with you to your next destination. Instead, IDA recommends that you burn all firewood before you leave the campsite.



# ATTENTION ALL FIREWOOD IMPORTERS

State Law Requires ALL FIREWOOD IMPORTERS to register with IDA.

Please register by filling out this form:

<http://www.agr.state.il.us/eab/data/200912038234.pdf>



Reprinted with permission of artist Joe Heller of the Green Bay Press

# WWW.ILLINOISEAB.COM

If you suspect EAB, please contact your city forester or local arborist or take digital photographs of the tree and the symptoms it is expressing and email them with contact info to: [AGR.EAB@Illinois.gov](mailto:AGR.EAB@Illinois.gov)



Illinois Department of Agriculture ~ DeKalb Office  
2280 Bethany Road, Suite B ~ DeKalb, IL 60115  
815/787-5476 ~ 815/787-5488 fax  
Hotline: 800/641-3934

[WWW.ILLINOISEAB.COM](http://WWW.ILLINOISEAB.COM)

