

# Symantec Enterprise Vault™

Guide for Microsoft Outlook 2010/2013  
Users

11.0

# Symantec Enterprise Vault: Guide for Microsoft Outlook 2010/2013 Users

The software described in this book is furnished under a license agreement and may be used only in accordance with the terms of the agreement.

Last updated: 2014-04-28.

## Legal Notice

Copyright © 2014 Symantec Corporation. All rights reserved.

Symantec, the Symantec Logo, the Checkmark Logo, Enterprise Vault, Compliance Accelerator, and Discovery Accelerator are trademarks or registered trademarks of Symantec Corporation or its affiliates in the U.S. and other countries. Other names may be trademarks of their respective owners.

This Symantec product may contain third party software for which Symantec is required to provide attribution to the third party ("Third Party Programs"). Some of the Third Party Programs are available under open source or free software licenses. The License Agreement accompanying the Software does not alter any rights or obligations you may have under those open source or free software licenses. Please see the *Third Party Software* file accompanying this Symantec product for more information on the Third Party Programs.

The product described in this document is distributed under licenses restricting its use, copying, distribution, and decompilation/reverse engineering. No part of this document may be reproduced in any form by any means without prior written authorization of Symantec Corporation and its licensors, if any.

THE DOCUMENTATION IS PROVIDED "AS IS" AND ALL EXPRESS OR IMPLIED CONDITIONS, REPRESENTATIONS AND WARRANTIES, INCLUDING ANY IMPLIED WARRANTY OF MERCHANTABILITY, FITNESS FOR A PARTICULAR PURPOSE OR NON-INFRINGEMENT, ARE DISCLAIMED, EXCEPT TO THE EXTENT THAT SUCH DISCLAIMERS ARE HELD TO BE LEGALLY INVALID. SYMANTEC CORPORATION SHALL NOT BE LIABLE FOR INCIDENTAL OR CONSEQUENTIAL DAMAGES IN CONNECTION WITH THE FURNISHING, PERFORMANCE, OR USE OF THIS DOCUMENTATION. THE INFORMATION CONTAINED IN THIS DOCUMENTATION IS SUBJECT TO CHANGE WITHOUT NOTICE.

The Licensed Software and Documentation are deemed to be commercial computer software as defined in FAR 12.212 and subject to restricted rights as defined in FAR Section 52.227-19 "Commercial Computer Software - Restricted Rights" and DFARS 227.7202, "Rights in Commercial Computer Software or Commercial Computer Software Documentation", as applicable, and any successor regulations. Any use, modification, reproduction release, performance, display or disclosure of the Licensed Software and Documentation by the U.S. Government shall be solely in accordance with the terms of this Agreement.

Symantec Corporation  
350 Ellis Street, Mountain View, CA 94043

<http://www.symantec.com>

# Contents

Chapter 1	Introducing Symantec Enterprise Vault .....	6
	About Enterprise Vault and your Outlook mailbox .....	6
	About Vault Cache for Outlook users .....	7
	About Virtual Vault for Outlook users .....	8
	About working offline with Enterprise Vault .....	10
	About selection of items to archive .....	11
	About retention of archived items .....	11
	About Enterprise Vault and Outlook conversations .....	12
Chapter 2	Setting up Enterprise Vault .....	13
	About setting up Enterprise Vault in Outlook .....	13
	Setting up your Vault Cache and Virtual Vault .....	13
	Showing or hiding your Virtual Vault .....	15
	Turning off your Outlook AutoArchive .....	15
	Configuring Windows Search .....	16
Chapter 3	Enterprise Vault options and mailbox icons .....	18
	Enterprise Vault options on the Outlook ribbon .....	18
	Enterprise Vault page in Outlook Backstage view .....	21
	Enterprise Vault Office Mail App (Outlook 2013 only) .....	22
	Enterprise Vault Outlook mailbox icons .....	24
Chapter 4	Working with archived items .....	25
	Viewing your archived items .....	25
	Searching for your archived items .....	26
	Replying to and forwarding your archived items .....	26
	Deleting your archived items .....	27
	Deleting items and folders from a Virtual Vault .....	27
	Canceling deletion of your archived items .....	28
	Sharing the items in your vault .....	28

Chapter 5	Storing and restoring items .....	30
	Storing your items manually .....	30
	Storing your folders manually .....	32
	Restoring your archived items .....	33
	Canceling your archiving and restore operations .....	35
Chapter 6	Managing Enterprise Vault archiving .....	36
	Synchronizing your Vault Cache .....	36
	Viewing and changing your Vault Cache properties .....	39
	How Enterprise Vault sets your folder properties .....	40
	Setting the Enterprise Vault properties of a mailbox or folder .....	40
	Suspending or enabling archiving for your mailbox .....	44
Chapter 7	PST file migration .....	46
	About PST file migration .....	46
	Migrating PST files to Enterprise Vault .....	47
	Submitting PST files for migration .....	47
Index .....		49

# Introducing Symantec Enterprise Vault

This chapter includes the following topics:

- [About Enterprise Vault and your Outlook mailbox](#)
- [About Vault Cache for Outlook users](#)
- [About Virtual Vault for Outlook users](#)
- [About working offline with Enterprise Vault](#)
- [About selection of items to archive](#)
- [About retention of archived items](#)
- [About Enterprise Vault and Outlook conversations](#)

## About Enterprise Vault and your Outlook mailbox

Enterprise Vault automatically moves emails and their attachments from the folders in your Outlook mailbox to an online storage area that is called a *vault*. This process is called *archiving*. Enterprise Vault runs automatically and usually performs archiving at off-peak times.

After Enterprise Vault archives emails, they remain available to you in Outlook in the following ways:

- Most administrators set up Enterprise Vault so that there is a *shortcut* in your mailbox to each archived email. A shortcut replaces the email in the mailbox folder and provides instant access to the archived email. The shortcut has the following special icon in the Outlook item list:



A shortcut looks like the original email and behaves in a similar way. For example, you can open an email from its shortcut, forward and reply to the email, and copy or move it to another folder. Your administrator can configure Enterprise Vault so that shortcuts expire after a certain time. An expired shortcut disappears from the mailbox, but the archived item is still in your vault.

- If your administrator has enabled it, Outlook displays your vault as a *Virtual Vault* in the Navigation Pane.

Your administrator can set up Enterprise Vault so that it archives Outlook items other than emails. If so, you may see archived Outlook calendar items, tasks, contacts, or notes in your Virtual Vault in the appropriate folder view.

Although archiving is automatic, your administrator may have set up Enterprise Vault so that you can choose to do any of the following:

- Store items in the vault yourself at any time. When you store an item, Enterprise Vault adds it to your vault as an archived item. Enterprise Vault treats the items that you have stored in the same way as any other archived item.
- Restore archived items; that is, move or copy archived items back into your mailbox in their original format. You do not need to restore archived items to forward them or reply to them, or to perform other actions.
- Migrate personal storage table (.PST) files to Enterprise Vault. Outlook automatically creates PST files to save email communication data locally. These files often appear in Outlook with a folder name of 'Personal Folders'. Enterprise Vault does not normally archive any information that is held in your PST files on your computer. However, depending on how your administrator has configured PST file migration either the administrator can archive these items for you or you can choose to migrate PST files to Enterprise Vault.

If you have access to more than one Microsoft Exchange account, note that you can only use Enterprise Vault actions on items in the primary mailbox. The primary mailbox is the first Exchange mailbox that was added to your Outlook profile.

## About Vault Cache for Outlook users

Your administrator can make the *Vault Cache* feature available to you. A Vault Cache is located on your computer, and contains copies of the items that are in your online vault. You need a Vault Cache if you want to do the following:

- Access archived items from shortcuts when you are not connected to your corporate network.
- Use Virtual Vault.

- Use Archive Explorer (if available) when you are not connected to your corporate network.

Your administrator can choose whether your Vault Cache stores complete archived items or partial archived items. You cannot change this option. A partial archived item includes enough information for Virtual Vault to display it in the Outlook item list, but not the item's full content.

If your Vault Cache stores partial archived items, Enterprise Vault retrieves the full content from your online vault when it is required. For example, Enterprise Vault retrieves the full content of an archived item when you open the item from Virtual Vault. The type of Vault Cache (that is, whether it stores complete archived items or partial archived items) affects the accessibility of archived items when you work offline.

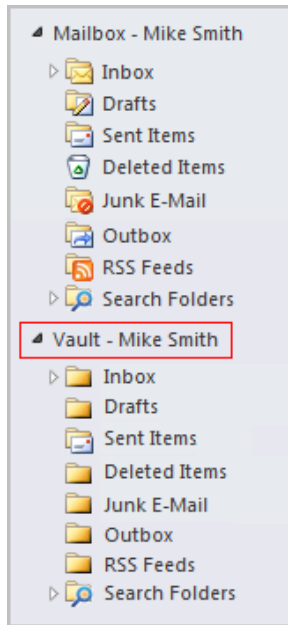
Enterprise Vault regularly synchronizes your online vault and your Vault Cache. Your administrator may also let you start the synchronization process yourself.

## About Virtual Vault for Outlook users

If your administrator has enabled it, Outlook displays your vault in the Navigation Pane. This feature of Enterprise Vault is called *Virtual Vault*. A Virtual Vault appears like a mailbox folder or personal folder in the Outlook Navigation Pane. [Figure 1-1](#) shows a mailbox and a Virtual Vault.



**Figure 1-1** Example of a Virtual Vault



The contents of the selected vault are shown in the Outlook Navigation Pane. You can open items in your vault and perform the normal Outlook actions on items, such as forward, reply, move, and delete.

A Virtual Vault always shows you what is in your Vault Cache rather than what is in your online vault. A Virtual Vault may not be identical to your online vault if recent changes have not been synchronized.

Depending on how your administrator has set up Enterprise Vault, you may be able to move items into your vault for archiving. If you have permission to move items into your vault, the Virtual Vault includes these two search folders:

- |                   |  |
|-------------------|--|
| Could Not Archive | Lists items that Enterprise Vault could not archive when it synchronized your Vault Cache with the online vault that is associated with your Outlook mailbox.                                |
| To Archive        | Lists items that you have moved or copied into your Virtual Vault and that are awaiting archiving. The folder does not include items that Enterprise Vault could not archive for any reason. |

Note the following points about Virtual Vaults:

- You may be able to view the contents of shared archives and delegate archives in your Virtual Vault, but you cannot modify the contents.
- A Virtual Vault cannot contain public folder items.
- You cannot modify items by, for example, changing the content or read status, adding or changing a flag for follow up, and so on.
- All items in your Virtual Vault have a status of read.
- You may be able to move, delete, and rename Virtual Vault folders, but only if the folders do not exist in your mailbox.
- You cannot display the properties of a Virtual Vault folder.

## About working offline with Enterprise Vault

When Enterprise Vault archives an item from your mailbox, it normally leaves a shortcut that links directly to the archived item. Replacing items with shortcuts saves space in your mailbox. However, if you work offline or you are not connected to your corporate network, double-clicking a shortcut cannot open the item in your online vault.

A Vault Cache provides instant access to archived items, even when you work offline or are not connected to your corporate network. After you have set up a Vault Cache, you can retrieve archived items in the following ways:

- Open the items from the corresponding shortcuts in your mailbox.
- Open the items from your Virtual Vault.

Note that your administrator may have set up your Vault Cache so that it stores partial archived items. With this type of Vault Cache, the full content of archived items is inaccessible when you do not have a connection to your online vault.

Another possibility is that your Vault Cache stores both partial items and the full content of items that you have opened when you work online. In this case, you can open any previously opened items, even when there is no connection to your online vault.

When you work offline, you cannot perform the following actions using Enterprise Vault buttons or commands:

- Store items in a vault.
- Restore items from Enterprise Vault shortcuts.
- Delete items from a vault.
- Display or change the Enterprise Vault properties for a folder.

- Migrate PST files to Enterprise Vault.

However, you can use your Virtual Vault to store, restore, and delete items. These actions take effect in the online vault after the next synchronization.

## About selection of items to archive

Enterprise Vault selects items to archive in one or both of the following ways:

- Archiving by age of item. Enterprise Vault archives items automatically as soon as they reach the specified age.  
The age of a mail message is taken from the date you received it or sent it. The age of a document is taken from the date when it was last modified.
- Archiving to keep your mailbox below its size limit. Enterprise Vault archives the oldest items in your mailbox until the mailbox contains a certain percentage of free space.

When both of these strategies apply, Enterprise Vault performs age-based archiving first. If age-based archiving does not free enough space in your mailbox, Enterprise Vault archives more items until the required percentage of space is free.

Archiving by age and archiving by percentage of mailbox size limit are the main strategies for selection of items to archive. The administrator may also configure Enterprise Vault so that it archives large items first. Archiving large items first operates in addition to the main archiving strategy. Archiving large items first has the advantage that Enterprise Vault recovers mailbox space by archiving relatively few items.

---

**Note:** The administrator can lock the setting that controls the archiving strategy so that you cannot change it.

---

## About retention of archived items

When Enterprise Vault archives an item, it automatically assigns a *retention category* to specify how long to keep the item. Your administrator can set up different retention categories for different types of data, such as Business or Legal. As Enterprise Vault monitors the vaults, it can then delete any item whose retention period has elapsed.

You may be able to choose from a list of available retention categories when you store an item in a vault. If none of the categories is appropriate, ask your administrator to create a new one for you. If your administrator has set up Enterprise

Vault for the migration of PST files, you may be able to change the retention category of PST files that you choose to migrate.

How Enterprise Vault calculates the start of the retention period for an item normally depends on the type of item. The start of the retention period is typically the received date for mail messages and the last-modified date for documents. However, your administrator may have set up Enterprise Vault so that the start of the retention period is the date on which the item was archived.

## About Enterprise Vault and Outlook conversations

You can perform Enterprise Vault actions on items that are arranged as Outlook conversations. The actions operate in the same way as in the normal folder view. You have to select items within the conversation to perform Enterprise Vault actions on them, rather than selecting only the conversation header.

Outlook conversations can include unarchived items, Enterprise Vault shortcuts, and archived items that are in Virtual Vault.

You might select items from one or more conversations and then choose an Enterprise Vault action that cannot be performed on some of the items. In this case, Enterprise Vault does the following:

- It performs the action on the items for which it is possible.
- It displays a dialog box that lists the items for which the action was unsuccessful and gives the reasons.

For example, you might select the following and try to store them in Enterprise Vault:

- Some unarchived items that are in your Inbox
- Some unarchived items that are in Personal Folders
- Some items that are already in Virtual Vault

Enterprise Vault stores the unarchived items, and lists the Personal Folder items and the items that are already archived.

# Setting up Enterprise Vault

This chapter includes the following topics:

- [About setting up Enterprise Vault in Outlook](#)
- [Setting up your Vault Cache and Virtual Vault](#)
- [Showing or hiding your Virtual Vault](#)
- [Turning off your Outlook AutoArchive](#)
- [Configuring Windows Search](#)

## About setting up Enterprise Vault in Outlook

After Enterprise Vault is installed, it is immediately ready to use. However, if you want to use Vault Cache and Virtual Vault, you may need to do some further setting up.

If you can see your Virtual Vault in the Outlook Navigation Pane, you do not need to set up either the Virtual Vault or a Vault Cache. If a Virtual Vault does not exist, but your administrator has configured Enterprise Vault to let you use it, all you need to do is set up a Vault Cache.

## Setting up your Vault Cache and Virtual Vault

If a Vault Cache is not already set up, you can run the Vault Cache wizard. The wizard may start automatically when you open Outlook. If the wizard does not start automatically, follow the procedure below.

You need to run the wizard once only. The wizard sets up your Vault Cache, and starts synchronization for the first time. Synchronization is the process that keeps your Vault Cache up to date with your online vault.

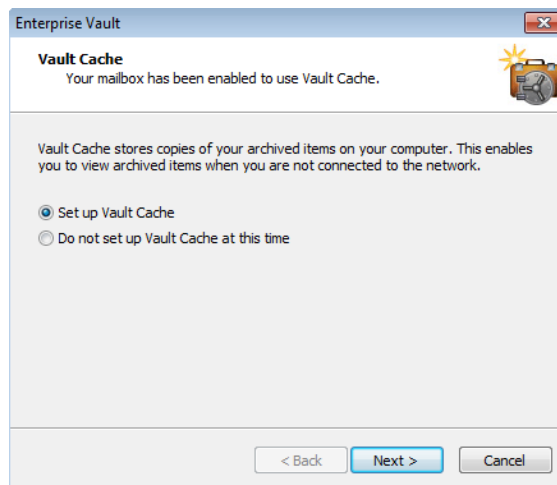
You do not need to perform any further setup for Virtual Vault. When the first synchronization is complete, your Virtual Vault normally appears in the Outlook Navigation Pane. If it does not appear, you can choose an option to display it.

See [“Showing or hiding your Virtual Vault”](#) on page 15.

#### To set up a Vault Cache

- 1 Click the **File** tab and then click **Enterprise Vault**.
- 2 Click **Enable Vault Cache**.

The Vault Cache wizard appears.



- 3 On the first page of the Vault Cache wizard, select **Set up Vault Cache**, and then click **Next**.
- 4 If the next page includes the **Apply age limit** option, choose the maximum age of archived items to download automatically to your Vault Cache. This page appears only if your administrator has configured certain Enterprise Vault options.

To apply an age limit, follow these steps:

- Check **Apply age limit**.
- Enter a value for the maximum age of archived items to download automatically to your Vault Cache.
- Click **Next**.

If you do not want to apply an age limit, uncheck **Apply age limit**.

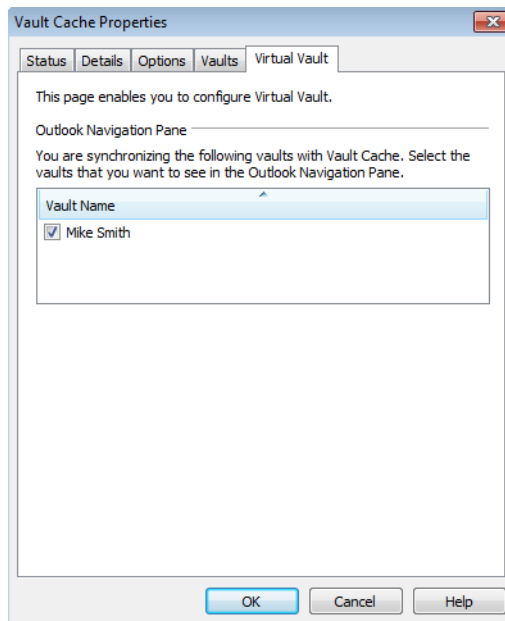
- 5 On the final page, click **Finish** to start synchronization.

## Showing or hiding your Virtual Vault

Your Virtual Vault normally appears automatically in the Outlook Navigation Pane after your Vault Cache has been set up. However, in some circumstances, you may need to take the following steps to make it visible.

### To show or hide your Virtual Vault

- 1 Click the **File** tab and then click **Enterprise Vault**.
- 2 Click **Configure Vault Cache**.
- 3 On the **Virtual Vault** tab, check or uncheck your vault name to show or hide it in the Outlook Navigation Pane.



- 4 Click **OK**.

You can also hide your Virtual Vault by right-clicking it in the Outlook Navigation Pane and then clicking **Close "Vault - name"**.

## Turning off your Outlook AutoArchive

Outlook AutoArchive is different from Enterprise Vault archiving. AutoArchive archives items to a personal folder (PST) file. Enterprise Vault archives items to a vault on your network. The archived items can be safely backed up, and you can

view, search for, or restore them. Now that you use Enterprise Vault to archive items from your mailbox, we recommend that you turn off AutoArchive.

#### To turn off Outlook AutoArchive

- 1 Click the **File** tab and then click **Options**.
- 2 Click **Advanced**.
- 3 Under **AutoArchive**, click **AutoArchive Settings**.
- 4 Uncheck **Run AutoArchive every *n* days**.
- 5 Click **OK**.
- 6 To return to the previous view, close the **Outlook Options** dialog box.

## Configuring Windows Search

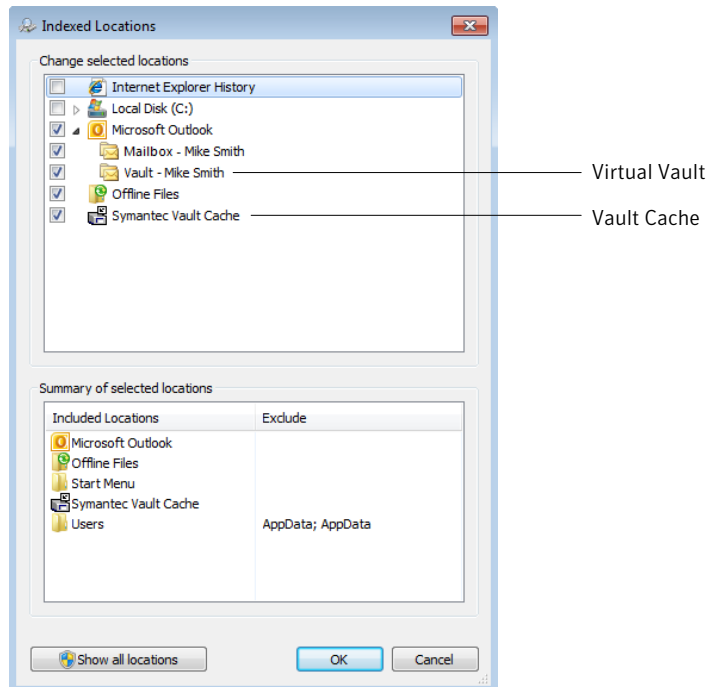
Follow the steps below to determine whether your administrator has set up Enterprise Vault so that Windows Search is enabled automatically for use with your Vault Cache and Virtual Vault. You can also use this procedure to configure Windows Search, if required.

#### To check the Windows Search options

- 1 In Outlook, open the Indexing Options. How you open the Indexing Options depends on which version of Windows you use. For example:
  - In Windows 7, click **Start > Control Panel**. In the search box, type **indexing options**, and then click **Indexing Options**.
  - In Windows 8, hold down the the Windows logo key and press **w**. Type **index**, and then click **Indexing Options**.
- 2 In the Indexing Options, click **Modify**.

The Indexed Locations appear. (The following figure shows the Windows 7 version of the Indexed Locations.)





3 In the **Change selected locations** list, ensure that the entry for your Virtual Vault is selected. In addition, if the Symantec Vault Cache location appears in the list, ensure that it is selected.

4 Click **OK**.

5 Close the Indexing Options.

When your computer is idle, Windows Search updates its index to include the items in your Vault Cache.

# Enterprise Vault options and mailbox icons

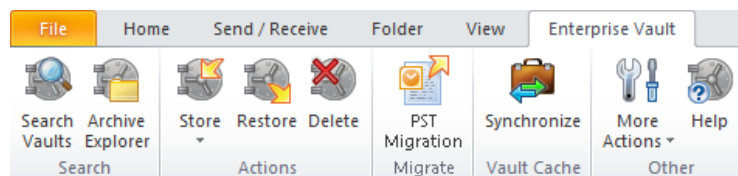
This chapter includes the following topics:

- [Enterprise Vault options on the Outlook ribbon](#)
- [Enterprise Vault page in Outlook Backstage view](#)
- [Enterprise Vault Office Mail App \(Outlook 2013 only\)](#)
- [Enterprise Vault Outlook mailbox icons](#)

## Enterprise Vault options on the Outlook ribbon

Depending on how your administrator has set up Enterprise Vault, a number of buttons may be available on the Enterprise Vault tab on the Microsoft Outlook ribbon.

**Figure 3-1** Enterprise Vault tab in Outlook 2010



The Other group may include a **More Actions** button. Your administrator can place Enterprise Vault options as commands on the **More Actions** menu, rather than directly as buttons on the Enterprise Vault tab. The following example shows the Cancel Operation command on the **More Actions** menu.

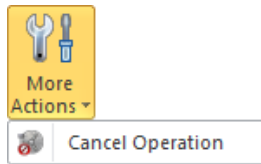





**Figure 3-2** More Actions menu in Outlook 2010

Table 3-1 lists all the options that may be on the Enterprise Vault tab or the More Actions menu. Some options have longer names when they are on the **More Actions** menu. The longer names are shown in brackets in this table. For example, the Restore option appears on the **More Actions** menu as Restore from Vault.





**Table 3-1** Options on the Enterprise Vault tab or More Actions menu

Option	Icon	Description
Search Vaults		Search for archived items in the available vaults.  See <a href="#">“Searching for your archived items”</a> on page 26.  If the Search Vaults button is on the Enterprise Vault tab, it also appears on the <b>Outlook Search</b> tab.
Archive Explorer		Display a tree view of the items in your vault.  Your administrator may have set up Enterprise Vault to provide you with the new Enterprise Vault Search application rather than Archive Explorer. In this case, the Archive Explorer command and toolbar button are not available. Enterprise Vault Search combines advanced search facilities with all the browse features that were previously available in Archive Explorer.  If the Archive Explorer button is on the Enterprise Vault tab, it also appears on the <b>Outlook Search</b> tab.

**Table 3-1** Options on the Enterprise Vault tab or More Actions menu  
(continued)

Option	Icon	Description
Store (Store selected items in Vault and Store selected folder in Vault)		<p>Store the selected items or the selected folder.</p> <p>On the Enterprise Vault tab, click the upper part of the <b>Store</b> button to store the selected items. Click the lower part of the <b>Store</b> button to display two options: <b>Store selected items</b> and <b>Store selected folder</b>.</p> <p>On the <b>More Actions</b> menu, the options appear as <b>Store selected items in Vault</b> and <b>Store selected folder in Vault</b>.</p> <p>You can only use the <b>Store</b> options on items or folders in the mailbox, and not on items or folders in Virtual Vault.</p> <p>See <a href="#">“Storing your items manually”</a> on page 30.</p> <p>See <a href="#">“Storing your folders manually”</a> on page 32.</p>
Restore (Restore from Vault)		<p>Restore the items that are associated with the selected Enterprise Vault shortcuts.</p> <p>You can only use this option on items in the mailbox, and not on items in Virtual Vault.</p> <p>See <a href="#">“Restoring your archived items”</a> on page 33.</p>
Delete (Delete from Vault)		<p>Delete archived items.</p> <p>You can only use this option on items in the mailbox, and not on items in Virtual Vault.</p> <p>See <a href="#">“Deleting your archived items”</a> on page 27.</p>

**Table 3-1** Options on the Enterprise Vault tab or More Actions menu  
(continued)




Option	Icon	Description
Cancel (Cancel Operation)		<p>Cancel the Enterprise Vault operation that is currently in progress. You can cancel the following operations:</p> <ul style="list-style-type: none"><li>■ Delete (Delete from Vault)</li><li>■ Store (Store selected items in Vault and Store selected folder in Vault)</li><li>■ Restore (Restore from Vault)</li></ul> <p>You can only use this option on items or folders in the mailbox, and not on items or folders in Virtual Vault.</p> <p>See <a href="#">“Canceling deletion of your archived items”</a> on page 28.</p> <p>See <a href="#">“Canceling your archiving and restore operations”</a> on page 35.</p>
PST Migration		<p>Migrate PST files to Enterprise Vault.</p> <p>See <a href="#">“About PST file migration”</a> on page 46.</p>
Synchronize (Synchronize Vault Cache)		<p>Synchronize your Vault Cache with your online vault.</p> <p>See <a href="#">“Synchronizing your Vault Cache”</a> on page 36.</p>
More Actions		<p>Display a menu containing one or more further Enterprise Vault commands.</p> <p>Your Enterprise Vault administrator controls whether options appear as buttons on the Enterprise Vault tab or as commands on the <b>More Actions</b> menu.</p>

## Enterprise Vault page in Outlook Backstage view

Enterprise Vault adds its own page to the Outlook Backstage view. (The Backstage view is displayed when you click the Outlook File tab.) The Enterprise Vault page includes system information, and may include more Enterprise Vault buttons.

Table 3-2 lists the Enterprise Vault buttons that may be on the Enterprise Vault page in the Backstage view.

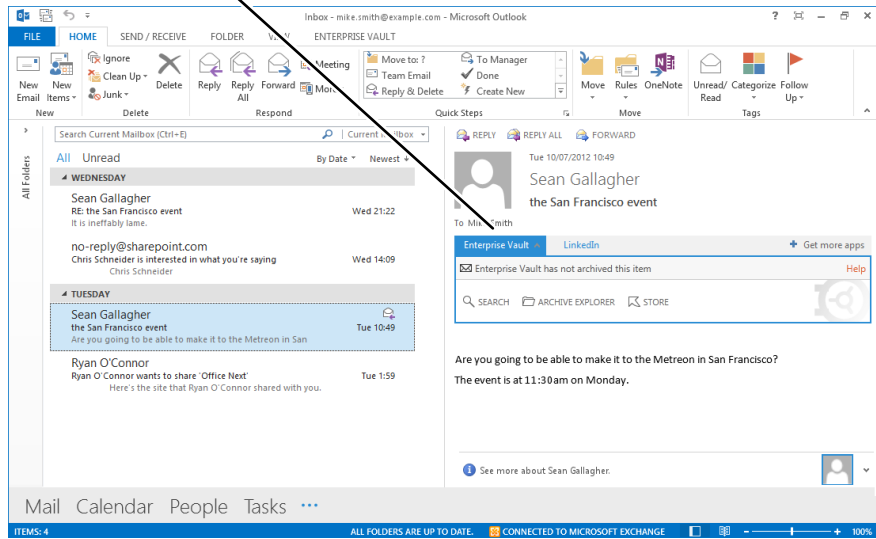
**Table 3-2** Enterprise Vault buttons in the Backstage view

Button	Icon	Description
Enable Vault Cache		Run the Vault Cache wizard. See <a href="#">“Setting up your Vault Cache and Virtual Vault”</a> on page 13.
Configure Vault Cache		Open the Vault Cache properties. See <a href="#">“Viewing and changing your Vault Cache properties”</a> on page 39.
Expiry Report		List the items that Enterprise Vault will delete from your vault because their retention period is about to end. If necessary, you can restore selected items to your mailbox.

## Enterprise Vault Office Mail App (Outlook 2013 only)

In Outlook 2013, most Enterprise Vault options on the Outlook ribbon are also available in the Enterprise Vault Office Mail App, if your administrator has enabled it. The Office Mail App appears at the top of the current email, calendar item, or meeting request.

Enterprise Vault Office Mail App



Note the following points about the Office Mail App:

- The options in the Office Mail App operate on the current item only. You cannot use them to perform actions on multiple items.
- Several factors determine which options are available in the Office Mail App. These factors include whether or not the current item is archived and how your administrator has set up Enterprise Vault.
- You can use the Office Mail App with emails, calendar items, and meeting requests only, and not with tasks, contacts, and other types of Outlook items. In addition, the Office Mail App is not available in draft items and in any items that you open from your Virtual Vault.
- The following options in the Office Mail App operate in slightly different ways than the equivalent options in the **Enterprise Vault** tab on the Outlook ribbon:





**Restore** Restores the current item to the folder that contains the shortcut. You cannot choose an alternative folder in which to restore the item.

**Store** Stores the current item without prompting you to choose a target vault. However, you may be able to choose a retention category, if your administrator has set up Enterprise Vault to permit this.

# Enterprise Vault Outlook mailbox icons

The items in your Outlook mailbox may be marked with the following icons.

**Table 3-3** Enterprise Vault mailbox icons

Icon	Description
	Shortcut to archived item. You can double-click the shortcut to view the contents of the original item. You can forward or reply to the item, and perform other actions available in Outlook. Or you can select the shortcut and then restore the item to your mailbox.
	Pending archive. Enterprise Vault has marked the item for storage in a vault.
	Pending restore. You have chosen to restore the item from your vault. A restored item is the same as it was before it was archived. It has its original icon. A copy of the item remains in the vault.
	Pending deletion. You have chosen to delete the item from your vault. Enterprise Vault also deletes the shortcut from your mailbox.



# Working with archived items

This chapter includes the following topics:

- [Viewing your archived items](#)
- [Searching for your archived items](#)
- [Replying to and forwarding your archived items](#)
- [Deleting your archived items](#)
- [Sharing the items in your vault](#)

## Viewing your archived items

When Enterprise Vault archives an item, it may leave a shortcut in your mailbox. The shortcut is a direct link to the archived item.

If the item is not immediately available, Enterprise Vault shows the shortcut contents instead. You can then choose to restore the item to your mailbox.

You can also view archived items that are in your Virtual Vault.

### To view an archived item

- 1 Select the shortcut to the item, or select the item in your Virtual Vault.
- 2 Do one of the following:
  - Use any of the normal Outlook actions to open the item.
  - If you use Outlook 2013 and can see the Office Mail App at the top of the current item, click **View** in the Office Mail App.

## Searching for your archived items

After Enterprise Vault has archived an email or another Outlook item, you can find it with Outlook Instant Search. Instant Search finds both archived items in your Virtual Vault and shortcuts in your mailbox.

If there is no shortcut to the archived item and you cannot find it in Virtual Vault, you can use the Search Vaults feature in Enterprise Vault to find and restore the item.

### To search for your archived items with Search Vaults

- 1 Do one of the following:
  - On the **Enterprise Vault** tab on the Outlook ribbon, in the **Search** group or on the **More Actions** menu, click **Search Vaults**.
  - Click in the Outlook Instant Search box and then, on the **Search** tab, in the **Enterprise Vault** group, click **Search Vaults**.
  - If you use Outlook 2013 and can see the Enterprise Vault Office Mail App at the top of the current item, click **Search** in the Office Mail App.
- 2 If Enterprise Vault prompts you for your logon details, type them and then click **OK**.

If the logon dialog box does not have a separate **Domain** field, you must type your user name in the form **domain\_name\user\_name**.

- 3 Enter the search criteria, and then start the search.
- 4 If required, restore one or more items to your mailbox.

For more information on how to use the search facilities, see the online Help that accompanies them.

## Replying to and forwarding your archived items

You can reply to or forward an archived item from its shortcut, or from your Virtual Vault. Outlook opens the item in its original form, exactly as it does when you reply to or forward any other item.

If you select one or more shortcuts to forward as attachments, Outlook attaches the original items to a new email.

---

**Note:** In Outlook 2010 and later, when you forward archived items as attachments, wait until you can see the new email before you select any other items. Otherwise, items from your later selection may incorrectly be attached to the new email.

---

## Deleting your archived items

If your Enterprise Vault administrator has enabled you to delete items from a vault, you can do so in the following ways. You can also delete archived items through the search facilities in Enterprise Vault.

### To delete archived items from shortcuts using an Enterprise Vault option on the Outlook ribbon

- 1 Select the shortcuts to the archived items that you want to delete.  
You can include any items that are not shortcuts. Enterprise Vault ignores such items.
- 2 On the **Enterprise Vault** tab, in the **Actions** group, click **Delete**. Or on the **More Actions** menu, click **Delete from Vault**.
- 3 Click **Yes** to confirm that you want to delete both the shortcuts and the archived items.

### To delete an archived item from its shortcut using the Enterprise Vault Office Mail App (Outlook 2013 only)

- 1 Select the shortcut to the archived item that you want to delete.
- 2 In the Enterprise Vault Office Mail App, click **Delete**.
- 3 Click **OK** to confirm that you want to proceed.

### To delete an item that you have opened from a shortcut

- 1 On the **Message** tab of the opened item's window, in the **Delete** group, click **Delete**.
- 2 Click **Yes** to confirm that you want to delete the item.
- 3 If a further prompt appears, choose to delete the shortcut only or both the shortcut and the archived item.

If you delete the shortcut only, the item remains in your online vault and you can still retrieve the item from your Virtual Vault.

## Deleting items and folders from a Virtual Vault

Note that you can only delete a folder from Virtual Vault if the folder does not exist in your mailbox.

### To delete items from a Virtual Vault

- 1 In a Virtual Vault folder, select the items that you want to delete.
- 2 On the **Home** tab, in the **Delete** group, click **Delete**. Or on the right-click menu, click **Delete**.

**To delete a folder from a Virtual Vault**

- 1 In your Virtual Vault, select the folder that you want to delete.
- 2 On the right-click menu, click **Delete Folder**.
- 3 In the prompt window that appears, click **Yes** to confirm the deletion or **No** to cancel it.

## Canceling deletion of your archived items

If an item has a status of pending deletion, you may be able to stop Enterprise Vault completing the operation.

**To cancel deletion of an archived item using an Enterprise Vault option on the Outlook ribbon**

- 1 Select the items for which you want to cancel deletion.  
You can include any items that Enterprise Vault is not processing. Enterprise Vault ignores such items.
- 2 On the **Enterprise Vault** tab, in the **Actions** group, click **Cancel**. Or on the **More Actions** menu, click **Cancel Operation**.

**To cancel deletion of an archived item using the Enterprise Vault Office Mail App (Outlook 2013 only)**

- 1 Select an item for which you want to cancel deletion.
- 2 Click **Cancel**.

## Sharing the items in your vault

Unless you specify otherwise, your vault is not accessible to other users. Only you can store items in your vault, search for items in it, and restore items from it. However, you can grant other users access to your vault or to selected folders in the vault. To do this, you must set access permissions on your Outlook folders. Enterprise Vault then automatically applies the same permissions to the folders in the vault.

### To share the items in your vault

- 1 In your mailbox, right-click the required folder and then click **Properties**.
- 2 Click the **Permissions** tab, and then add the user to whom you want to give access.
- 3 Assign the required permissions to the user as follows:

To let the other user see your vault	Give the user Folder Visible permission on your mailbox (top level).
--------------------------------------	--

To let the other user browse to a folder	Give the user Folder Visible permission on any parent folders and on your mailbox as a whole.
--	---

If you give another user delegate access to your mailbox, you may want to let the user archive and restore items. If so, you must give the user Editor permissions on the folders in your mailbox.

# Storing and restoring items

This chapter includes the following topics:

- [Storing your items manually](#)
- [Storing your folders manually](#)
- [Restoring your archived items](#)
- [Canceling your archiving and restore operations](#)

## Storing your items manually

Enterprise Vault performs automatic archiving in the background, and does not require any action from you. However, there may be occasions when you want to store an item in your vault manually. You can store items manually if your administrator has set up Enterprise Vault to permit it.

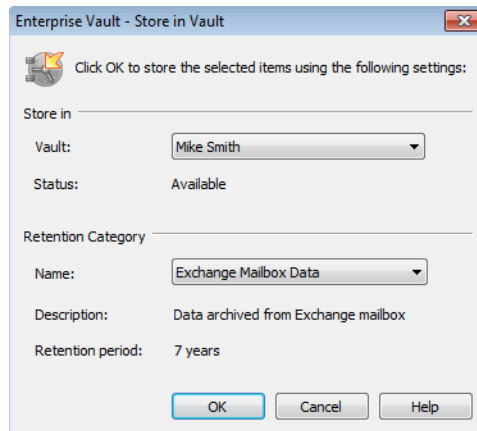
There are several methods that you can use to store items manually, including the following:

- By clicking **Store** on the Enterprise Vault tab on the Microsoft Outlook ribbon.
- In Outlook 2013 only, by clicking **Store** in the Enterprise Vault Office Mail App, if it is available.
- By moving or copying items to your Virtual Vault.  
This method has some limitations: you cannot cancel archiving of any items that you store in this way, and you cannot store items from an Exchange managed folder, if your administrator has enabled archiving of such folders.

**To store items using an Enterprise Vault option on the Outlook ribbon**

- 1 In your mailbox, select one or more items to store.  
You can select items from more than one folder at once; for example, by selecting items from search results. However, if you do this then you cannot specify a vault or a retention category for the archived items.
- 2 On the **Enterprise Vault** tab, in the **Actions** group, click the upper part of the **Store** button. Or on the **More Actions** menu, click **Store selected items in Vault**.

The Store in Vault dialog box appears.



- 3 Specify a vault and retention category, if you have the option to choose them.
- 4 Click **OK** to confirm that you want to store the items.

**To store an item using the Enterprise Vault Office Mail App (Outlook 2013 only)**

- 1 Select or open the unarchived item that you want to store.
- 2 In the Enterprise Vault Office Mail App, click **Store**.  
If Enterprise Vault does not prompt you to choose a retention category, you have completed the necessary steps. While storing is in progress, you can click **Cancel** to stop Enterprise Vault completing the action.
- 3 If Enterprise Vault prompts you to choose a retention category, open the **Select retention category** menu and select one. Enterprise Vault then displays the retention period and the retention category description.
- 4 Click **OK**.

### To store items using Virtual Vault

- 1 Select one or more items to store.
- 2 Use any of the normal Outlook actions to move or copy the items into your Virtual Vault.

For example, you can store the items in the following ways:

- To move the items, drag them into the Virtual Vault folder where you want to store them. Or right-click them, and then click **Move** and select a Virtual Vault folder.
- To copy the items, hold down **Ctrl** and drag them into the Virtual Vault folder where you want to store them.

## Storing your folders manually

Enterprise Vault performs automatic archiving in the background, and does not require any action from you. However, there may be occasions when you want to store a complete folder in your vault manually. You can select the entire contents of the folder and store the items manually. Alternatively, you can store a folder if your administrator has set up Enterprise Vault to permit it. You cannot store a complete mailbox.

You can use an option on the Enterprise Vault tab in Outlook to store a folder. If you have Virtual Vault enabled, you can also move or copy a folder to your Virtual Vault to store it.

The following Enterprise Vault folder settings are obeyed when you store a complete folder:

- Vault
- Retention Category
- Create shortcut to archived item after archiving
- Delete original item after archiving
- Archive unread items

The following setting is ignored when you store a complete folder:

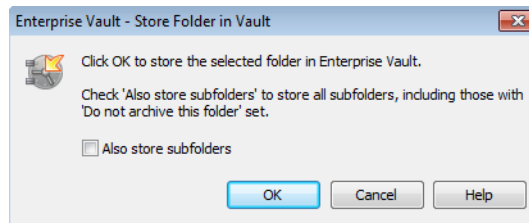
- Do not archive this folder



### To store a folder using an Enterprise Vault option

- 1 Select the folder to store.
- 2 On the **Enterprise Vault** tab, in the **Actions** group, click the lower part of the **Store** button and then click **Store selected folder**. Or on the **More Actions** menu, click **Store selected folder in Vault**.

The Store Folder in Vault dialog box appears.



- 3 Check or uncheck **Also store subfolders**.
- 4 Click **OK**.

### To store a folder using Virtual Vault

- 1 Select a folder to store.
- 2 Use any of the normal Outlook actions to move or copy the folder into your Virtual Vault.

For example, you can store the folder in the following ways:

- To move the folder, right-click it. Then click **Move Folder** and select a Virtual Vault folder in the Move Folder dialog box.
- To copy the folder, right-click it. Then click **Copy Folder** and select a Virtual Vault folder in the Copy Folder dialog box.

## Restoring your archived items

You do not normally need to restore archived items to your mailbox, as you can view them easily from their shortcuts or from Virtual Vault. If you do restore items, they are restored in their original format. For example, if a restored item is a mail message, you can still reply as normal.

You can restore archived items in either of the following ways:

- By using their shortcuts. You can restore items from shortcuts to the current folder (where the shortcuts are), or to another folder. You can also restore items from shortcuts to a special Enterprise Vault folder that is named Restored Items.

If the Restored Items folder does not exist, Enterprise Vault automatically creates it. You can also choose to delete the shortcuts when the items have been restored.

- By using the normal Outlook actions to copy or move the items from your Virtual Vault to your mailbox.

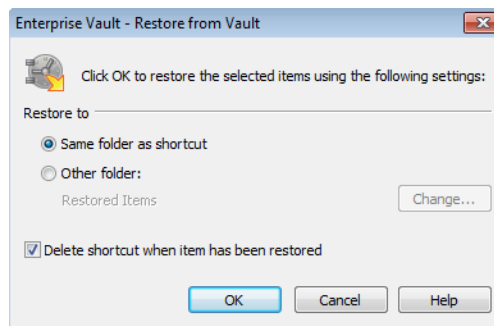
If you want to restore items to a public folder, you must have Owner access to the folder. If you do not have Owner access, you can copy a shortcut from a public folder to your mailbox. Then you can restore the item to your mailbox.

Enterprise Vault may take some time to restore any items that are stored offline.

### To restore archived items from shortcuts using an Enterprise Vault option on the Outlook ribbon

- 1 If the shortcuts are in a public folder or a PST file, copy them to a folder in your mailbox.
- 2 In your mailbox, select shortcuts to items that you want to restore. Use the normal Outlook selection to select single or multiple shortcuts. You can include any items that are not shortcuts. Enterprise Vault ignores such items.
- 3 On the **Enterprise Vault** tab, in the **Actions** group, click **Restore**. Or, on the **More Actions** menu, click **Restore from Vault**.

The Restore from Vault dialog box appears.



- 4 Select the settings that you require. For details of the settings, click **Help** in the Restore from Vault dialog box.
- 5 Click **OK** to confirm that you want to restore the items. The original items are restored to your mailbox.

**To restore an archived item from its shortcut using the Enterprise Vault Office Mail App (Outlook 2013 only)**

- 1 Select the shortcut.
- 2 In the Enterprise Vault Office Mail App, click **Restore**. While restoring is in progress, you can click **Cancel** to stop Enterprise Vault completing the action.

**To restore archived items from a Virtual Vault**

- 1 In your Virtual Vault, select the items that you want to restore. Use the normal Outlook selection to select single or multiple items.
- 2 Use any of the normal Outlook actions to move or copy the items into your mailbox.

For example, you can restore the items in the following ways:

- To move the items, drag them into the mailbox folder where you want to restore them. Or right-click them, and then click **Move to Folder** and select a mailbox folder in the Move Items dialog box.
- To copy the items, hold down **Ctrl** and drag them into the mailbox folder where you want to restore them.

## Canceling your archiving and restore operations

If an item in your mailbox has a status of pending archive or pending restore, you may be able to stop Enterprise Vault completing the operation.

You do not normally need to cancel archiving and restore operations. If you want to open an item that has a status of pending archive or pending restore, you can double-click it.

You cannot cancel archiving and restore operations on items in your Virtual Vault.

**To cancel archiving and restore operations**

- 1 Select the items for which you want to cancel the operation.  
You can include any items that Enterprise Vault is not processing. Enterprise Vault ignores such items.
- 2 On the **Enterprise Vault** tab, in the **Actions** group, click **Cancel**. Or on the **More Actions** menu, click **Cancel Operation**.

# Managing Enterprise Vault archiving

This chapter includes the following topics:

- [Synchronizing your Vault Cache](#)
- [Viewing and changing your Vault Cache properties](#)
- [How Enterprise Vault sets your folder properties](#)
- [Setting the Enterprise Vault properties of a mailbox or folder](#)
- [Suspending or enabling archiving for your mailbox](#)

## Synchronizing your Vault Cache

Enterprise Vault keeps your Vault Cache up to date by synchronizing it with the online vault that is associated with your Outlook mailbox.

The administrator may also have configured Enterprise Vault so that you can do the following:

- Synchronize the Vault Cache yourself at any time.
- Suspend synchronization. When you suspend synchronization, any current synchronization process stops and Enterprise Vault does not perform any further updates to your Vault Cache.

---

**Note:** Synchronization remains suspended even if you stop and restart Outlook, until you choose to resume synchronization.

---

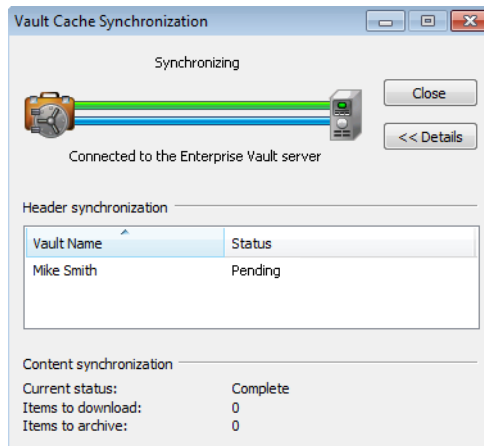
- Synchronize your Vault Cache with additional vaults to which you have access.

Enterprise Vault automatically determines which items to download to your Vault Cache.

**To synchronize your Vault Cache**

- ◆ On the **Enterprise Vault** tab, in the **Vault Cache** group, click **Synchronize**. Or on the **More Actions** menu, click **Synchronize Vault Cache**.

The Vault Cache Synchronization dialog box appears.

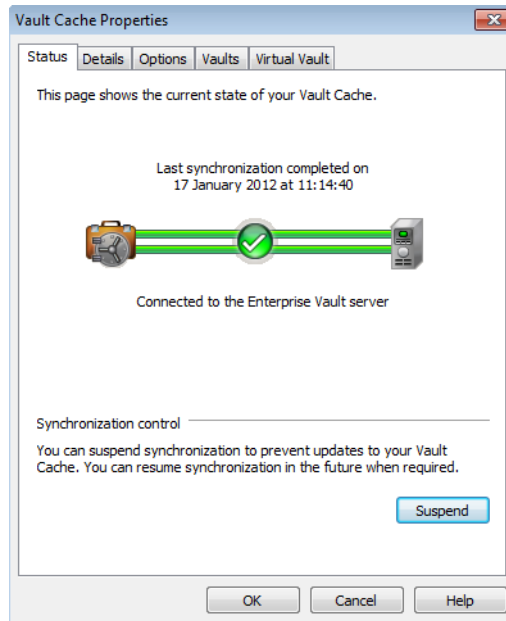


The Vault Cache Synchronization dialog box provides summary information about the synchronization process. You can close the dialog box while synchronization is in progress, and continue to work with Outlook.

**To suspend or resume synchronization**

- 1 Click the **File** tab and then click **Enterprise Vault**.
- 2 Click **Configure Vault Cache**.

The Vault Cache Properties appear.

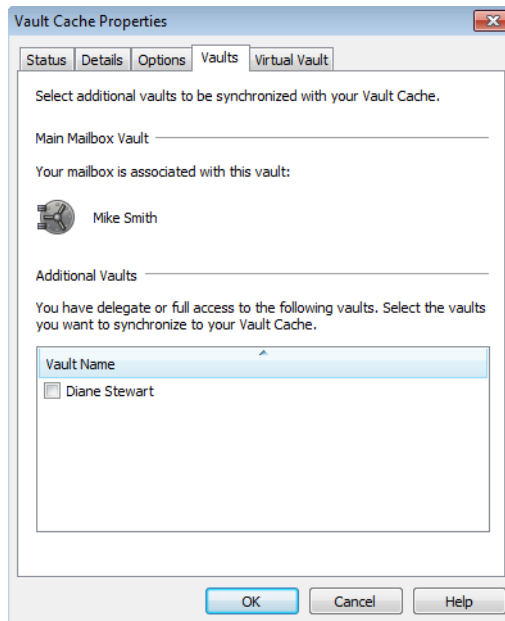


- 3 In the Vault Cache Properties, on the **Status** tab, click **Suspend** or **Resume**.

**To choose additional vaults to synchronize with**

- 1 Click the **File** tab and then click **Enterprise Vault**.
- 2 Click **Configure Vault Cache**.

- 3 In the Vault Cache Properties, click the **Vaults** tab.



If there is no **Vaults** tab, the administrator has not enabled this feature.

- 4 To choose an additional vault, check the box next to its name.
- 5 Click **OK**.

The additional vault appears in your Virtual Vault after the synchronization process has ended.

## Viewing and changing your Vault Cache properties

The Vault Cache Properties can contain up to five tabbed pages. The administrator controls which tabs are included.

If the appropriate tabs are available, the Vault Cache Properties let you do the following:

- Suspend or resume synchronization.
- Start synchronization.
- View synchronization progress.
- Set the disk space to use for the content of items in your Vault Cache.

- Set the amount of time after Outlook starts before Enterprise Vault checks for items to be synchronized to your Vault Cache.
- Choose vaults to synchronize with your Vault Cache, in addition to the main vault that is associated with your mailbox.
- Select the vaults that you want to see as Virtual Vaults in the Outlook Navigation Pane.

**To view and change Vault Cache properties**

- 1 Click the **File** tab and then click **Enterprise Vault**.
- 2 Click **Configure Vault Cache**.

The Vault Cache Properties contain one or more tabs. For information about the currently selected tab, click **Help** in the Vault Cache Properties.

## How Enterprise Vault sets your folder properties

By default, all folders in your mailbox have the Enterprise Vault property **Use parent folder settings** selected. This means that all folders inherit the Enterprise Vault archiving settings, retention category, and vault that are set up for your mailbox. Until you change the values for a particular folder, Enterprise Vault archives all items with the same retention category and stores them in the same vault.

You can override the parent folder settings by changing the Enterprise Vault properties for a folder. If a folder contains other folders, those folders also inherit the properties of the parent folder unless you change them.

For example, you may have a folder called Accounts Paid with a retention category of Finance. By default, all subfolders in Accounts Paid use the same retention category. To use a different retention category for one of the subfolders in Accounts Paid, you must change the Enterprise Vault properties for that subfolder.

## Setting the Enterprise Vault properties of a mailbox or folder

You may be able to change the archiving settings for a mailbox, mailbox folder, or public folder. Among the settings that you can change, if you have the required permissions, are the following:

- Whether Enterprise Vault archives the items in this mailbox or folder
- The default retention category to assign to the items in your mailbox or a mailbox folder
- For a folder:

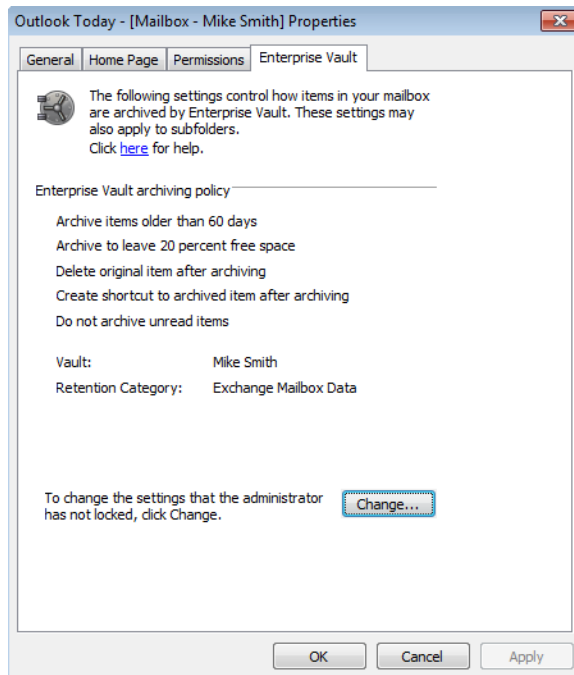


- How old items must be before Enterprise Vault archives them
- Whether Enterprise Vault deletes items after archiving them
- Whether Enterprise Vault creates shortcuts to archived items
- Whether Enterprise Vault archives unread items

If the Change option is not available, there are no settings that you can change.

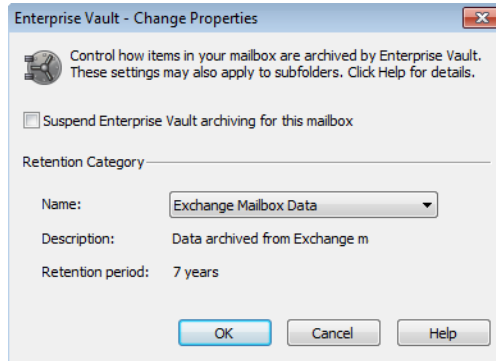
**To set the Enterprise Vault properties of a mailbox**

- 1 In the Outlook Navigation Pane, right-click the mailbox and then click **Data File Properties**.
- 2 In the Mailbox Properties, click the **Enterprise Vault** tab to display the current settings.



3 Click **Change**.

The Enterprise Vault - Change Properties dialog box appears.



4 Choose the required options. Your administrator may have locked the settings to prevent you from changing them.

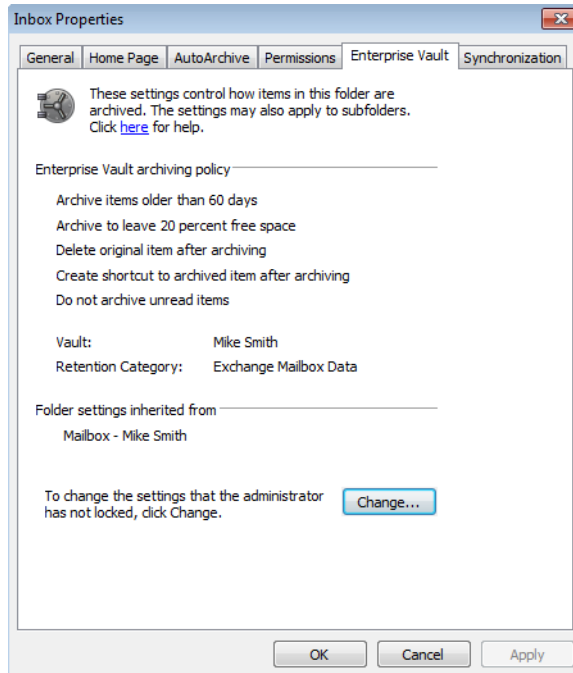
For a description of each option, click **Help** in the Enterprise Vault - Change Properties dialog box.

5 Click **OK** in the Enterprise Vault - Change Properties dialog box.

6 Click **OK** or **Apply** in the Mailbox Properties.

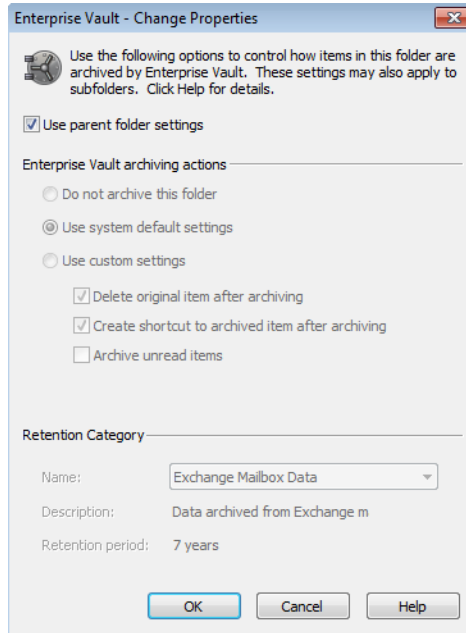
### To set the Enterprise Vault properties of a folder

- 1 In the Outlook Navigation Pane, right-click the folder and then click **Properties**.
- 2 In the Folder Properties, click the **Enterprise Vault** tab to display the current settings.



3 Click **Change**.

The Enterprise Vault - Change Properties dialog box appears.



If archiving is based only on the age of items, the custom settings in the Enterprise Vault - Change Properties dialog box also include **Archive items older than**.

4 Choose the required options. The available options vary according to the selected folder. Your administrator may have locked the settings to prevent you from changing them.

For a description of each option, click **Help** in the Enterprise Vault - Change Properties dialog box.

5 Click **OK** in the Enterprise Vault - Change Properties dialog box.

6 Click **OK** or **Apply** in the Folder Properties.

## Suspending or enabling archiving for your mailbox

When you first use Enterprise Vault, everything is usually set up so that Enterprise Vault archiving can start immediately. If you choose to suspend this automatic archiving, you can still choose to store items yourself.

You can suspend archiving for an individual mailbox folder by changing the Enterprise Vault properties of the folder.

Your administrator may prevent the Change option from appearing on the Enterprise Vault Mailbox Properties page. In this case, you cannot suspend archiving.

**To suspend or enable archiving for your mailbox**

- 1 In the Outlook Navigation Pane, right-click the mailbox and then click **Data File Properties**.
- 2 In the Mailbox Properties, click the **Enterprise Vault** tab.
- 3 Click **Change**.
- 4 In the Enterprise Vault - Change Properties dialog box, check or uncheck **Suspend Enterprise Vault archiving for this mailbox**.
- 5 Click **OK** in the Enterprise Vault - Change Properties dialog box.
- 6 Click **OK** or **Apply** in the Mailbox Properties.

# PST file migration

This chapter includes the following topics:

- [About PST file migration](#)
- [Migrating PST files to Enterprise Vault](#)
- [Submitting PST files for migration](#)

## About PST file migration

Enterprise Vault does not normally archive any information that is held in Personal Storage Table (PST) files on your computer, unless your administrator has enabled your mailbox for PST file migration. The administrator can archive these items for you or let you choose whether to migrate PST files to Enterprise Vault.

Depending on how your administrator has configured PST file migration you can do the following:

- View the status of PST files that are migrating or have migrated to Enterprise Vault.
- Choose whether to migrate PST files to Enterprise Vault.
- Submit PST files for migration.

You can continue to use your PST files to read and store items as normal during the migration. However, do not edit the items that are in the files because the changes may not be saved.

---

**Note:** If any of your PST files is password-protected, you may be prompted for the password.

---

Depending on how your administrator has configured Enterprise Vault, the PST file is deleted when the migration successfully completes. You can use **Search Vaults**

to search for the items that have been archived or restore items using the **Restore** option.

## Migrating PST files to Enterprise Vault

Enterprise Vault regularly checks for PST files on your computer. You can migrate the contents of the located PST files to Enterprise Vault.

If there are PST files listed that you do not want to migrate, remove them from the list using the **Remove** option on the **Migrate PST Files** dialog box. Note that the files are permanently removed from the list, but continue to exist on your computer.

If you choose to migrate the contents of the PST files later, you can submit the files to Enterprise Vault using the **Manually add a PST file** option. If you do not take any action, this list is incrementally updated with new PST files located on your computer.

### To migrate PST files to Enterprise Vault

- 1 On the **Enterprise Vault** tab on the Outlook ribbon, in the **Migrate** group, click **PST Migration**.

All the located PST files are listed in the **Migrate PST Files** dialog box. By default, all the files are selected.

The Migrate PST Files dialog box can also be accessed using the **View located PST files** button.

Click **Not Now** to defer the migration until later.

- 2 Deselect any PST files that you do not want to migrate.
- 3 For each PST file that is selected for migration, select the retention category that you want to use from the list in the **Retention Category** column.
- 4 Click **Migrate**, and then click **OK** to confirm that you want to migrate the files.
- 5 If there are some files that you do not want to migrate, select only those files and click **Remove**. The selected files are removed from the list, but continue to exist on your computer.

## Submitting PST files for migration

If your administrator has enabled your mailbox for the submission of PST files, you can submit PST files manually for migration to Enterprise Vault. Depending on how your administrator has set up PST submission, you may be able to change the retention category of the PST file that you choose to migrate to Enterprise Vault.

**To submit a PST file to Enterprise Vault**

- 1 On the **Enterprise Vault** tab on the Outlook ribbon, in the **Migrate** group, click **PST Migration**.
- 2 In the **PST Migration** dialog box, click **Manually add a PST file**.
- 3 In the **Submit PST file** dialog box, browse to select the file.
- 4 In the **Retention Category** list, select the retention category that you want to use.
- 5 Click **OK**.



# Index

## A

- Age of archived item 11
- Archiving
  - canceling 35
  - changing strategy 40
  - manual 30, 32
  - strategy 11
  - suspend or enable 44
- Archiving strategy 40
- AutoArchive
  - turning off 16

## B

- Backstage view 21

## C

- Canceling an Enterprise Vault operation 28, 35
- Conversation view 12

## D

- Deleting items from a vault 27

## F

- Finding archived items 26
- Folders
  - assigning retention categories 40
  - setting Enterprise Vault properties 40
  - storing manually 32
- Forwarding archived items 26

## I

- Icons 24
- Introduction 6
- Items
  - canceling archiving and restore operations 35
  - canceling deletion 28
  - searching for 26
  - storing manually 30
  - viewing from shortcut 25

## Items *(continued)*

- viewing from Virtual Vault 25

## M

- Mailbox
  - assigning retention categories 40
  - icons 24
  - setting Enterprise Vault properties 40
  - suspend or enable archiving 44
- Migrating
  - PST files 47
  - PST files manually 47

## O

- Office Mail App 22

## P

- Parent folder settings 40
- Pending archive 24, 35
- Pending deletion 28
- Pending restore 35
- PST files
  - about migrating 46
  - choose to migrate files 47
  - manual submission 47
  - restoring items 34
  - retention category 47
- Public folders
  - setting Enterprise Vault properties 40

## R

- Replying to archived items 26
- Restoring items
  - from shortcuts 33
  - from Virtual Vault 33
- Retention category
  - default 40
  - retention period 11
  - setting 40

## S

Searching for archived items 26

### Shortcuts

- create after archiving 40
- deleting items 27
- overview 6
- replying and forwarding 26
- restoring items 33
- viewing items 25

### Storing

- folders 32
- items 30

Synchronizing a Vault Cache 36

## V

Vault Cache 7, 10

- configuring Windows Search 16
- properties 39
- setting up 13
- synchronizing 36

### Vaults

- deleting items 27
- searching for items 26
- storing items 30, 32
- Vault Cache 7, 10, 13, 16, 36, 39

Viewing archived items 25

Virtual Vault 7–8

- configuring Windows Search 16
- deleting items 27
- hiding or showing 15
- replying and forwarding 26
- restoring items 33
- searching for items 26
- setting up 13
- viewing items 25

## W

Windows Search 16

Working offline 7, 10