

**Appendix C: Wind Direction and Distance Factors**

<b>State</b>	<b>Emission Scoring Weight</b>
AR	0.166
IA	0.149
IL	1.000
LA	0.087
MD	0.051
MI	0.082
MN	0.100
MO	0.216
MS	0.136
NJ	0.029
OH	0.083
PA	0.050
VA	0.063
WI	0.093

### Appendix C: Wind Direction and Distance Factors

State	Distance from Illinois Center (miles)	Distance Factor (%)
AR	395.46	0.60
IA	261.55	0.74
IL	0	1.00
LA	683.49	0.32
MD	660.59	0.34
MI	354.01	0.65
MN	502.26	0.50
MO	212.37	0.79
MS	506.53	0.49
NJ	768.18	0.23
OH	338.42	0.66
PA	601.58	0.40
VA	583.64	0.42
WI	319.42	0.68

Source: Rogerson, P. 2015. A New Method for Finding Geographic Centers, with Application to the U.S. States. *The Professional Geographer*. Published online Aug 15, 2015; DOI:10.1080/00330124.2015.1062707 <http://www.tandfonline.com/doi/full/10.1080/00330124.2015.1062707#.Vd30QfIVhBc> Retrieved 2015-08-26

**Appendix C: Wind Direction and Distance Factors**

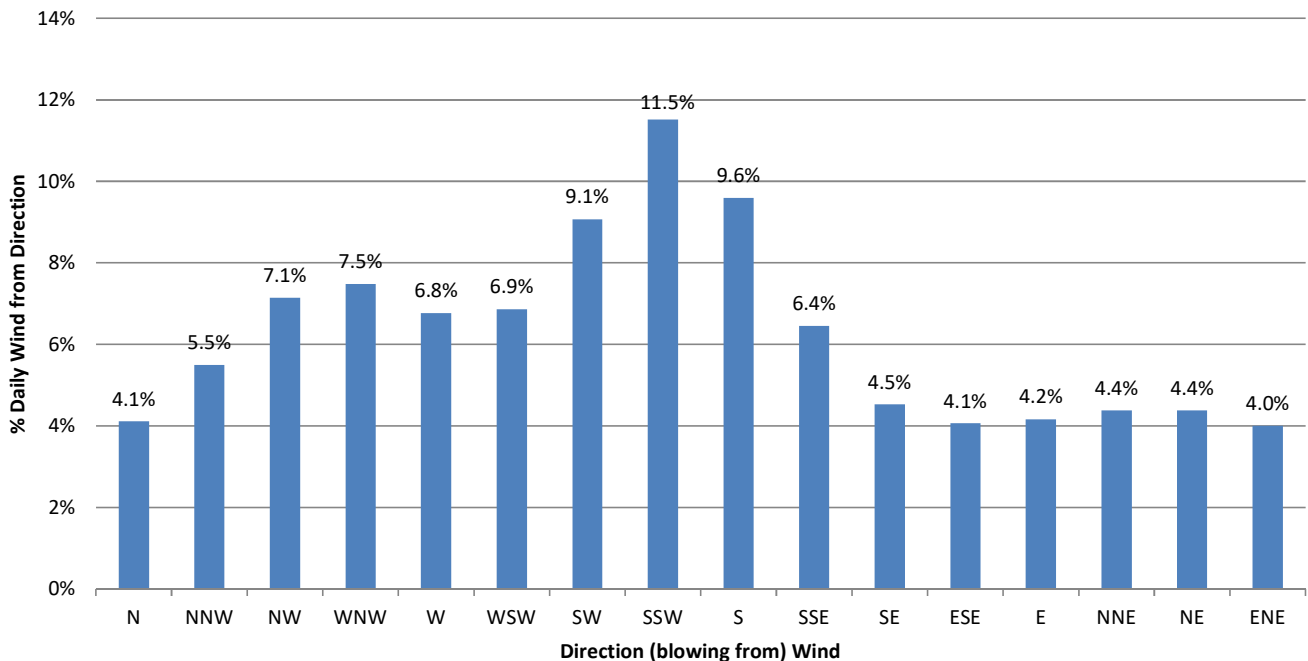
<b>State</b>	<b>ISO</b>	<b>Direction from IL</b>	<b>Wind Direction</b>
AR	MISO	SW	0.27446837
IA	MISO	NW	0.20119975
IL	PJM/MISO		1
LA	MISO	SW	0.27446837
MD	PJM	SE	0.15042296
MI	PJM/MISO	NE	0.12756951
MN	MISO	NW	0.20119975
MO	MISO	SW	0.27446837
MS	MISO	S	0.27553198
NJ	PJM	E	0.12610172
OH	PJM	E	0.12610172
PA	PJM	E	0.12610172
VA	PJM	SE	0.15042296
WI	MISO	N	0.1360784

**Appendix C: Wind Direction and Distance Factors**

Direction bin sizes 22.5

Direction	# Occurrences	% from Direction	
N	360	5799	4.1%
NNW	337.5	7752	5.5%
NW	315	10072	7.1%
WNW	292.5	10551	7.5%
W	270	9541	6.8%
WSW	247.5	9678	6.9%
SW	225	12795	9.1%
SSW	202.5	16235	11.5%
S	180	13527	9.6%
SSE	157.5	9096	6.4%
SE	135	6385	4.5%
ESE	112.5	5733	4.1%
E	90	5874	4.2%
NNE	67.5	6177	4.4%
NE	45	6174	4.4%
ENE	22.5	5640	4.0%
0	0	141,029	

Station	Location in IL	Dates Covered
Belleville	SW	11/89-12/16
Bondville	E	08/90-12/16
Brownstown	Central	09/89-12/16
Carbondale	SW	03/90-12/16
Champaign	E	02/89-12/16
DeKalb	NW	01/89-12/16
Dixon Springs	S	02/90-12/16
Fairfield	SE	09/91-12/16
Freeport	NW	06/89-12/16
Monmouth	W	06/89-12/16
Olney	E	11/89-12/16
Peoria	Central	01/89-12/16
Perry	W	07/89-12/16
Rend Lake	S	04/90-12/16
Springfield	Central	01/89-12/16
St Charles	NW	01/88-12/16
Stelle	NW	01/89-12/16



Appendix C: Wind Direction and Distance Factors

Source: <http://www.isws.illinois.edu/warm/weather/>

**Illinois Climate Network: Weather Data**

**Station Data**

